

(Continued from Page A10)

Saturday, March 25

Maryland Showcase Heifer Sale, Quarryville.
 Small Enterprises Livestock Mini Workshop, Harford County Md. Extension office, 9 a.m.-noon.
 Maryland/Virginia Milk Producers Co-Op young cooperators meeting, Holiday Inn, College Park, Md., noon.
 New York State Grazing Conference, Holiday Inn, Cortland, N.Y., 9 a.m.-4 p.m.
 Western Pa. Sheep Conference, Mercer Extension Center,

Mercer.

Horse Management Seminar, Elks Club, Tyrone, 9:30 a.m.

Sunday, March 26

National DHIA Convention and Trade Show, Sheraton, Burlington, Vt., thru March 29.

Mason-Dixon Red & White Dairy Cattle Association, Spangler's Restaurant, Gettysburg, 1 p.m.

Monday, March 27

Pesticide credit meeting, Lebanon Valley Ag Center, 1 p.m.-3 p.m. and 7 p.m.-9 p.m.

Tuesday, March 28

MFS Workshop, Ridgway Courthouse, also April 4.
 Pennsylvania Farm Link Program

educational meeting, Pennsylvania Farm Bureau Headquarters, Camp Hill, 9:30 a.m.-2 p.m.

Nutrient Management Workshop, southwest region, manure, Westmoreland Extension Office, Greensburg.

Pa. FFA Legislative Breakfast, Sheraton Inn-East, 7 a.m.

Wednesday, March 29

Tri-County Swine AI Short Course, Greencastle Livestock Market.

Mid East UDIA meeting, Brier Inn, Lewisburg, W.Va., 9:30 a.m.

On-Farm Composting Conference and Tour, Farm and Home Center, Lancaster, 9:15 a.m.-4 p.m.

PennAg Educational Seminar, Commercial Feed Law, Eden Resort Inn, Lancaster, 9 a.m.-10:30 a.m.

Thursday, March 30

1995 Annual Maryland Conference For Bovine Practitioners, Holiday Inn-Frederick, Freder-

ick, Md., thru March 31.
 Tractor Safety Training, Lehigh County Ag Center, Allentown, 7:30 p.m.

Nutrient Management Workshop, northeast region, manure, Knight's Inn, Danville.

Bucks County Fruit Growers meeting, Neshaminy Manor Center, Doylestown, 1 p.m.

Lehigh County Holstein Tour to Chester County, report Junge Farm, Lynnville, 8:15 a.m.

Friday, March 31

Pa. Cattlemen's Association annual membership meeting and awards banquet, Toftrees

Resort Hotel, State College, 6 p.m.

Pa.'s 22nd Annual Performance Tested Bull Sale, Ag Arena, Penn State, noon.

Saturday, April 1

Pa. Holstein Showcase Sale, Pa. Holstein Farm, Middletown, 10:30 a.m.

Beginning Sheep Shearing Clinic, T&R Center Sheep Unit.

Sunday, April 2

National 4-H Conference, Chevy Chase, Md., thru April 8.

Delaware Valley Milk Goat Association meeting, Little Rockspring Farm, Telford, 1:30 p.m.

SRBC Holds Hearing

(Continued from Page A29)

Commission include PP&L-Susquehanna Steam Electric Station, GPU-Three Mile Island Nuclear Station Unit 1, Dover Borough, Williamsburg Borough, Taylor Packing Co., Inc., Stewartstown

Borough Authority and New Holland Borough Authority.

The Commission also observed the first in a series of 25th anniversary retrospectives. This retrospective focused on the Commission's involvement in flood plain management and concluded with an award to the City of Harrisburg, Pennsylvania recognizing its flood plain management achievements.

The Commission also heard reports on the Corps of Engineers Wyoming Valley Levee Raising Project and hydrologic conditions in the river basin.

The Commission's next meeting is scheduled for May 11 at Bloomsburg.

Lancaster DHIA Reorganizes

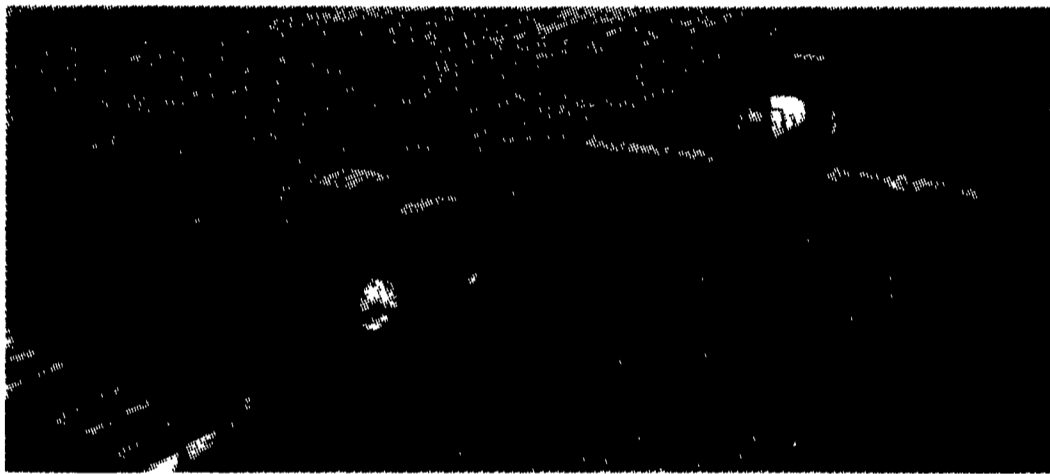
MANHEIM (Lancaster Co.) — The Lancaster Dairy Herd Improvement Association Board of Directors recently held its reorganizational meeting and elected Joe Graybeal as its president.

The Lancaster DHIA serves 1,135 dairymen in Lancaster and in some surrounding counties.

Others elected were Steve Hersey, vice president; Bruce Kreider, secretary; and Dave Garber, treasurer.

New board members were also introduced including Tom Arrowsmith, Dale Hershey, Kreider, Melvin Lantz, and Gary Stoltzfus.

A CLEAN START IN NO-TILL STARTS WITH ROUNDUP.



ECONOMICAL PRICE

• Roundup herbicide fits right in with the lower input costs of no-till farming.

BROAD-SPECTRUM PERFORMANCE

• Roundup controls over 100 different broadleaves and grasses.

RELIABLE RESULTS

• Thanks to its unique roots-and-shoots activity, Roundup works the first time ~ every time.

APPLICATION FLEXIBILITY

• Roundup lets you eliminate emerged weeds anytime before planting, at planting or after planting (but before crop emergence).

• Roundup can be tank-mixed with most residual herbicides and liquid nitrogen fertilizers.

• See us to discover how a clean start with Roundup herbicide can give you a head start to higher yields.



CONTACT YOUR LOCAL DEALER FOR MORE INFORMATION ABOUT THE ADVANTAGES OF ROUND UP HERBICIDES

Contact the Monsanto Representative In Your Area

Jeff Vance
 Lancaster, PA
 717-560-8894

Rex Petit
 Monroeville, PA
 412-373-8633

Sloan Rausser
 Salisbury, MD
 301-758-2950

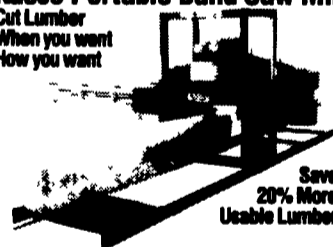
Mike Kuhns
 Selinsgrove, PA
 717-374-3734

Jay Baratelli
 Annapolis, MD
 410-268-5513

Bill Tucker
 Amherst, VA
 804-946-7154

Kasco Portable Band Saw Mill

Cut Lumber When you want How you want

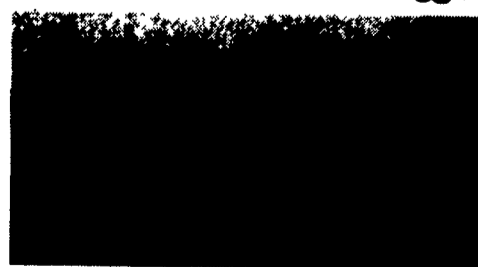


Save 20% More Usable Lumber

- 24" and 30" diameter capacities
- Power-thru cut or manual
- Market your own lumber
- Prices start at \$6195 plus freight

KASCO 170 W. 600 N
 Shelbyville, IN 46176 • (317) 398-7973

TOWN AND COUNTRY POURED WALLS



- Manure Pits • House Basements
- Retaining Walls • Trench Silo Walls



(610) 593-5794
 Ask For Ike