

Public Auction Register

Closing Date Monday 5:00 P.M.
of each week's publication

SAT APR 22 - 9AM Antiques, Household Goods, Furniture, Lg Assort. of Coins & Gold Pcs, Currency 1986 Old Philadelphia Pike, Lancaster, PA Dir. 2 Mi East of Lanc at Intersection of Old Phila Pike & Rt. 30. Sale for Mrs. Erma High. Miller & Siegrist Auctioneers

SAT APR 22 - 9:30AM Real estate, personal property, four miles E of Intercourse, Lanc Co, Pa. along Rt 340. 3 miles S. of White Horse. Reuben and Rachel Stoltzfus, owners Steve Petersheim, auct.

SAT APR 22 - 9:30AM Real Estate, Antiques, Collectibles, Household, Farm Tractor, Equipment, Lawn Tractor. Location 3 Mi. East of Klingers town turn North onto Boyer Rd., 1/2 Mi. to Sale Site Upper Mahanoy Township, Northumberland County. Approx 40 Mi Northeast of Harrisburg, PA. Owner: Sophie B. Boyer.

Mark J Jones Auctioneering Serv

SAT. APR 22 - 9:30AM Complete Dairy Herd Dispersal, Milking & Farm Equipment. Located I-83 Exit 1-Rt. 851 W. to New Freedom, PA-Cont. Rt. 851 W. 4.8 Mi., R on Hildebrand Rd or From Sticks Rt. 851 E. 2.6 Mi., L on Hildebrand Rd. 1.2 Mi., Right on Birthday Club Rd. 1st Farm on Right. Sellers Mr. & Mrs. Clark Thomas. Marlette E. Thomas & Kenneth K. Keeny Auctioneers.

SAT. APR. 22 - 9:30AM Complete dairy herd dispersal, milking and farm equip. For Mr. & Mrs. Ray Thomas & Mr. & Mrs. Clark Thomas. I-83 S. Exit 1 - Rt. #851 W to New Freedom, PA Follow Rt #851 W. 4.8 miles, right to Hildebrand Rd. 1.2 miles. Marlette E Thomas, auct.

SAT. APR. 22 -10AM 250 Feeder Steers. Sale Held on Alvin Wenger's Farm.

Located Next to Hall's Church, Near McKees. 7 Mi. North of Liverpool or 4 Mi. South of Port Trevorton, Snyder Co., PA. Watch for Sale Signs on Rt. 11 & 15 at McKees and on Rt. 104, Meiserville. Terms by Alvin M. Wenger. Nevin Martin & Sons Auctioneers

SAT. APR. 22 - 10AM Southern Cove Power Reunion Consignment Sale. Rt 869 off of Rt 36 toward New Enterprise, Pa Bedford Co Mark Swope, auct.

SAT. APR. 22 - 11AM Real estate, (8) two bedroom apartments Terre Hill Borough Area. 215 College Ave, Terre Hill Borough, Lanc. Co., From New Holland take Rt. 897 N, left on Main St. left on Oak Ln, right on College Ave. to auction. For Arlene M Groff. Art Reist, auct.

SAT. APR. 22 - 11AM Valuable 3 Acre Farmette, Riding Mower, Guns, House Items, Misc. Location Southern York Co, Stewartstown, PA From I83 Exit 1 (Shrewsbury) Take Rt. 851 E +/- 5 Mi. to Stewartstown. At Intersection of Rts 851 & 24, Take Rt 24S Approx. 2 Blocks, Then Turn L & Follow Rt 851 E. Again for +/- 2.5 Mi Turn L Onto Webb Rd. for +/- 1.3

Mi. Farm is at Intersection of Webb Rd. & Hickory Rd. Follow Signs. Owner Lois Nielsen. Russell Wright & Ralph Brenneman Auctioneers.

COMPLETE SERVICE AUCTIONEERING



PUBLIC AUCTION Saturday, March 25, 1995 9:00 a.m.

Selling Antiques and Collectibles for the Estate of the Late Hassel S. and Jennie K. Baker. 712 North Market Street, Selinsgrove, PA.

DIRECTIONS: From Harrisburg travel North on Routes 11 & 15 and continue into Selinsgrove. Proceed to the North end of the business district. 712 North Market Street. Signs posted.

ANTIQUES & COLLECTIBLES
Extension Table, Pedestal Library Table, 6 Plank Chairs, Misc Plank Chairs, Pressed Back Oak Rocker, Parlor Stands, Sq. China Closet, 3 Straight Windsor Chairs, Flour Chest, Paneled and Grained, Oak Bed, Twig Stand, Oak Chip Cut Bookcase; Cherry Chest of Drawers, D T Blanket Chest, Wing Back Vanity; Oak Washstand and Dresser, Sewing Machine, Sewing Table, Wooden Wheelbarrow, Wicker Wheelchair, Morris Chair, Spool Stand; Huckleberry Box, Washboards and Baskets; Wooden and Metal Lead Buckets, Bloomsburg and Other Slaw Boards; Drying Fingers, Remington Wooden Box, Wooden Nat Biscuit Box, Augers, Draw Knife, Sewing Vise; Smoke Stands, One Cast, Nail Kegs, Small Apple Butter Strainers, Fence Stretcher, Lux Soap Boxes, Frames & Prints, Wallace Nutting Magazine Rack, Rolling Pins, Rug Beater, Cast Fry Pans, Grizwald Muffin Pan, Wapack Dutch Oven, Granite Colander, Misc Graniteware; Stereoptic & Cards, Post Cards; Buttons, Mush Kettle, Brass Buckets, Corn Dryer, Music Box, Lantern, Kero Lamps, Some Finger Style, Glass Butter Churn, Slag Glass Lamp, Old Jars, Sad Irons, West German Clock, Old Calendars, Includes 1947 Pepsi and 1907 Grand Union Tea Co, Newton Home Med Tin, Sleigh Bells; Chalk Chicks, Indian Style Blankets, Like New, Fancy Linens, Ticking; Multi Car, 9 Patch, Basket Quilts, Fan and Other Comforts; Rug Runners; Braided Rugs, Polly Benfer 1898 Framed Death Notice, Photo Album; Sugar & Feed Bags, Round Blue Kero Heater, Corn Huskers, Kitchen Items, Seller Jars, Pewter Top Creamer, Peanut Butter Glasses, Some Santas, Counter Jars, McCoy Planter, Jumbo Peanut Jars, Blown Vase; Zinc Lids, Ironstone Ware, Glass Baskets; Misc. Depression, Salts and Peppers; Japan Tea Set, Frostedware, Sandwich Glass; Art Glass, Halls, Nippon, Noritake, Carnival, Lead Crystal, Globlets, Lots of Jewelry, Crocks, Sips & Nicholas with Blue; Hysong, Caldwell and Wilcox and Others; Sunshine Peanut Butter Tin, Harrisburg, 4 Pc Walnut Contemporary Bedroom Suite, Single Bed, 6 PA House Maple Chairs; Bedding, Towels and Tablecloths, Etc

EXECUTOR: Atty. Hugh A. Benson

KENNETH E. HASSINGER
McClure, PA 17841
(717) 658-3536
AU-001532-L

NEIL A. COURTNEY
Richfield, PA 17086
(717) 539-8791
AU-002651-L



Another PUBLIC AUCTION

VALUABLE 2 1/2 STORY LOG & FRAME HOUSE WITH SIDING & BARN ON 1 ACRE LOT ANTIQUES PERSONAL PROPERTY HOUSEHOLD GOODS
SATURDAY, APRIL 8, 1995 9 A.M.
12 NOON REAL ESTATE

Located at: 1417 Brunnerville Road, Litzitz, PA (in the Village of Brunnerville)
OPEN HOUSE DATES: Sat., March 11, 12-3; Sat., March 18, 12-3; Sat., March 25, 12-3. For additional appointments call 717-626-5980.

REAL ESTATE FEATURES a 2 1/2 story log & frame dwelling with a frame bank barn with drive-in bay, 2 stable areas & workshop area. House features semi modern kitchen, 3 paneled BR's, Large LR, DR with built-in corner cupboard; full bath; attic, basement, well water, public sewer.
TERMS: 10% down day of auction, balance within 45 days.

Atty: Young & Young

AUCTION FOR
Dorothy M. Steely
Barry L. Steely
717-626-5980

Auction Conducted By The
J. Omar Landis Auct Serv.
Jay M. Witman, AU001127-L
1605 Apple Street
Ephrata, PA 17522
717-738-7900, 665-5735



PUBLIC AUCTION

Saturday, March 25, 1995
9:00 a.m.

LOCATION: VFW Hall, 1 mile West of Selinsgrove, PA, along Route 522, Snyder County, approximately 50 miles North of Harrisburg, PA

Private Collection of Quality Antiques, Collectibles, Furniture, Toys, Dolls and Guns.

FURNITURE: 1 Pc Corner Cupboard, Soft Wood, 1 Door, 12 Pane, Dry Sink, 2 Drawer, Grained, Jelly Cupboard, Cut Out Shelf, Decorated Blanket Chest, Hearts, Tulips, Pillars, Crab Lock, Strap Hinges, (Possibly Berks or Lebanon County), Feet and Bottom Molding Missing, Small Chest with Horses and Rosettes (Believed to be Mahantango Valley), Blanket Chest, 2 Drawers, Salmon & Black Paint, Blanket Chest w/Grained Dotted Circles, Sheraton Blanket Chest, Red Paint, Sheraton Chest of Drawers, Pilgrims Ladder Back Chair, Peerless Dye Cabinet, Concert Roller Organ, Extra Rolls, Nice, 2 Kitchen Clocks, Wall Clock, Early Miniature Chests, Small Wooden Ship, Knick Knack Shelf, 2 Violins, Brass Piano Lamp, New Shade, Slag Glass Lamps, Small Reverse Painted Table Lamp, Unique C1 Tea Kettle, Lewisburg, Tin Banner Blond Coffee Bin Woolson Spice Co, Nice, Planters 25 Lb Peanut Butter Bucket, Planters Peanut Jar, Eagle Quilt, Coverlets, John Dogwood Heidelberg 1842, John Hamelton Jackson Twp Northumberland Co 1844 PA N, Blue & White Glazed Cat Soap Dish, Spongeware Soap Dish, Knights of Labor Meat Plate, Amber, Cut Glass Water Set, Childs Tea Set, Aunt Jemima Salt & Pepper and Sugar & Creamer, Metal Colored Butler in Tuxedo Holding Ash Tray, Approx 28" H

TOYS: Amos-N-Andy Fresh Air Taxi Cab Co, Tin Wind-Up By Marx, Nice, Moon Mullins and Kayo Railroad Hand Car Tin w/Up Marx, Joy Rider Marx, Popeye Carrying Parrots in Cages, in Box, Popeye Dippy Dumper, Damaged Head, Charlie McCarthy w/Up Car, Marx, Bally Mule Tin w/Up Lehmann (1 Leg Replaced), Tip Top Tin w/Up Strauss, Leaping Lena Tin w/Up, Lt'l Abner and His Dog Patch Band, in Box, Following Mech Toys in Box, Patsy The Pig, Bobby The Bear, Butch The Begging Puppy, Cubby The Reading Bear, Driver Training Car, Clever Bear, Ladder Truck, Ohio Friction, Painted Pressed Steel, Friction Tin Toy on Sled, Marke, Flipo by Marx, Early Bull on Platform Pull Toy, Head Turns 18", Dabble Gray Horse on Platform Pull Toy, Tin Pull Toy Jockey On Horse, Bear on Wheels, Santa Claus on Wind-Up Reindeer, Looping Plane, Marx, Clown Playing Fiddle, Iron Harley Davidson Motorcycle w/Driver, C1 Horse Pulling Sand/Gravel Wagon, C1 Stork & Parrot Bottle Openers, Trains, Lionel Standard Ga #8 Engine Plus #511-21-17 Cars, Lionel O Ga #254 Engine & Pullman Cars, Lionel #258 Engine & Tender 027 Ga, C1 Wind-Up Trains, Banks Tin Elephant Chain, Liberty Bell, Federal Tin Coin, Coin Deposit, C1 Still Banks, State Banks, Liberty Bell, Horse, Elephant, Owl, Etc., Candy Containers Pocket Watch, Santa Claus, Kewpie, Car Bank, Binoculars, Clown, Telephone, Iron Chicken On The Nest, Papier-mache Rabbit, Etc., Advertising Pocket Mirrors, Peanut Butter, Fort Bedford, Enameled Range, Horlicks Malted Milk, Old Reliable Coffee, Mascot Crushed Cht Tobacco, Morton Salt, D O Meckley West Milton, Local Adv Pcs., Eagle Milk Saitor, Sunbury Beer Tray, Butter Krust Bread Compass, Small Clock Sunbury National Bank, Tip Trays, James Van Dyke Druggist Sunbury, Hotel Aldine Sunbury, Etc., Beaver Paper Weight Danville Siove Co 1898, Dolls, Belton Type Doll 100 Comp Body Straight Wrists, Pierced Ears, C M Bergman S&H Doll Open Mount Orig Cloth 23", A&M #329 Character Body 15, German Bisque "Dolly Face" Pansy 21", A&M #370 Kid Body 20", A&M #390 24" w/Original Box, Character Baby #154 24" Attributed to Kestner, A&M #370, Handwerck #109 Comp Body 17", A&M #390 Comp Body 22", A&M 1894 Comp Body, A&M Mabel Doll, G br 165 K 27" Comp Body, Bisque Head Doll Marked Germany 11/0, Bisque Head/Hands Doll #5 (Possibly French) Bisque Head Doll 1900, China Head Doll, Kewpie 3/0, Teddy Bears, Very Early Hump Back Teddy Bear 20" Nice, Yes-No Teddy Bear, Unusual Muff w/Teddy Bear Head/Arms/Feet, Jointed Teddy Bear Pink & Blue Jointed Teddy, Doll House K Bliss, Nice, Wooden Doll Dresser, Christmas Decorations, Good Selection Glass Ornaments, Man In The Moon, Parrot, Owl, Fish, Santa On A Ball, Hanging Santa, Pickle, Zeppelin, Spring Clip Birds, Fiddle, Drum, Etc., Papier-mache Santa, Houses, Etc., Decorated Stoneware, 4 Gal Jug Wm Moyer Harrisburg PA (Big Chip at Spout), Cowden & Wilcox Harrisburg 3 Gal Crock Drooping Flower (Chip at Brim), FH Cowden 5 Gal Crock Snowflake (Chips at Base & Brim), 2 Gal Crock w/Bird N Y Stoneware Co (Chip at Top), Decorated Crock Weimer (Chips at Brim) Redware 1 Gal Decorated Crock Weimer, Unusual Blue and White Spongeware Water Cooler (Tight Crack Small Hole in Lid)

GUNS: (at 11:00 a.m.) Win Model 1895 Gov 30 06 Saddle Ring, Win Model 1892 WCF, Win Model 64 30 WCF, Win Model 94 38-55, Win Mode 06 22 Pump, Win Model 70 220 Swift, Win Model 61 22 Pump, Win Model 62A 22 Pump, Win Model 58 22, Win Model 1912 20 Ga Nickel Steel, Win Model 20 410 Single Shot, Win Model 12 16 Ga Matted Rib Nickel Steel, Win Model 37 12 Ga, Win Model 97 12 Ga, Rem Model 12 C 22 Octagon Barrel, Rem Matchmaster Model 513 S 22 Checkered Stock, 35 Rem Model 14, Rem 22 Octagon Barrel Rolling Block, Rem 22 single Shot Pat 1902, Stevens Favorite 22 Model 1915, Stevens Model 14 1/2 22, Marlin (Marlin Safety) 32 1/2 Lever Action Octagon Barrel Checkered Stock Model 1891, Rem Model 1917 Military, Savage 22/28 Ga Model 24S, Savage Model 99B 30-30, Western Arms Co 12 Ga Double, Japanese Paratrooper, War Rifle 2 Pc, Bayonets, Swords, Pewter Powder Container w/Hunting Scenes Dated 1759, Powder Horn, Gorge w/Eagle and Swastika, German SA Dagger, Miniature German Helmet (Possible Sample), Small German Dagger, Pistols Colt 45 Cal 1911 A1 US Army, H&R 22 Rim Fire Young Am Double Action, Iver Johnson 38 Cal, Smith & Wesson K22 (Firearms will be sold in accordance with Federal Firearms Regulations)

GRANITWARE: Green & White Swirl Tea Pot, Blue & White Milk Bucket, Blue & White Pans, Turquoise & White Coffee Pot, Etc., Tin Buckets, This Little Pig Went to Market, Etc., Store Cigar Lighter, Miniature Iron Animals and People, Noritake Azalea China, Service for 12 Plus Veg Bowls, 12" & 14" Meat Plates, Divided Veg Dish, Twin Relish (Loop Handle), Fan Shaped Vase, Creamer & Sugar (Gold Final), Salt & Pepper (Bell), Etc., Carnival Glass, Good Luck Bowl Blue, Peacock at Um Marigold, Plus More

TERMS: Cash or PA Check (Subject to 6% PA Sales Tax, except to buyers with a current dealers sales tax exemption on file with the auction).

OWNERS: KENNETH L. YOUNG AND SUSAN K. YOUNG

MARK J. JONES, AUCTIONEERING SERVICE
Phone (717) 286-0052 • Lic. #AU 1595-L
Jeff Dunkelberger • Lic. #AU 2043-L



Preview Saturday Morning
7:30 a.m. - 9:00 a.m.
Excellent Variety of Antiques -
Plan to Attend

AUCTION HELD INDOORS WEATS - SEATS - HEAT & PLENTY OF PARKING.
All property sells "as is where is" with no warranties of guarantees. Examine prior to bidding.



PUBLIC AUCTION SAT., MAR. 25, 1995 at 9:00 A.M.

Loc: 96 Creamery Rd., Pequea, Lancaster Co., PA, Martic Twp. (Dir.: Rte. 272 N or S to Truce. W. on Truce Rd., thru Rawlinsville & Mt. Nebo of Martic Hghts. Dr. to Creamery Rd. L to auction).

BOAT: 15' Fiberglass Sea Raider w/40 H P Mercury outbd. motor w/EZ Load boat trailer Lot misc boat gear, gas tanks, life jackets, loader, water skis

FARM TRACTORS: John Deere 3010 Diesel, Farmall H, Farmall Super A w/hyd Also, Farmall A & H wheel weights, cultivs, fert attach, manure loader, hoers Snow plow

SPECIAL ANTIQUE: Very fine early Acme 2-horse corn wagon w/wood spoke wheels, A-1 running gear

FARM EQUIP: John Deere (2) #10 side mtd sickle mowers, F125 3 (16") B plow, #64 silage blower, fert drill, 500D tool bar, McCormick-D 10-A Disk Harrow, Int 4-B semi-mtd #510 plow Sev wagons, (3) 16' flat beds, (1) 18' single axle dual wheel, (1) 13' single axle single wheel, 2-wheel dump trailer, seed cleaner, saw bucks, row marker, New Idea manure sprdr, Case stalk shredder, 3-sect spr harrow, field sprayer, Syracuse walk plow shares, hydr 2-way cyl, oil pump head gate, hog feeder, 3 pt hookup, forklift, lg implement box 50-gal trans fluid, 16" plow shares, land slides, shins, new & used tractor parts, J Deere tach, oil filters & other parts, roller chain, cable clamps

POWER TOOLS: Craftsman, Band saw, dbl grinder, tbl saw w/jointer, 1 1/4 H P router, plus blades, 5/8" scroller saw, etc Champion drill press, torch outfit, Forney arc welder, air comp, Briggs water pump; Stihl weed eater, chain saw. Hvy carts, tamper, ball hitch, log dog, etc.

ANTIQUES & COLLECTIBLES: Goose hood orn., hay hooks, some early car parts, D. Hagen broad axe, adze, early farrier's tool. Wood dowel rake, wheat cradle, x-cut & buck saws, wheelbarrow wheel, adv boxes, early tool boxes, hames, etc Tin Corn trays, bottle capper, ammo boxes

HAND TOOLS: 3/4" socket set, wrenches, saws, levels, hammers, chisels, etc. Tobacco clippers, corn knives, lot cable, tree trimmer, log chains, J D & other clevises, lots of dry lumber & hardware

Food served No out of state checks Not resp for accidents day of auction

Sale by
J. WARREN & JANE R. RAILING

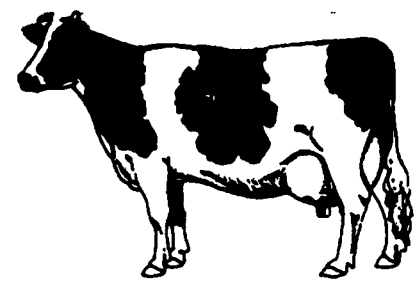
ROY & ERIC PROBST, aucts.
AU000730L, Ph (717) 464-3190

PUBLIC AUCTION MARTIN BROS. 9th ANNUAL HEIFER DISPERSAL

200 - HOLSTEIN DAIRY CATTLE - 200

Located on the Carson Martin Farm, 4 miles SW of Kantz, PA, 4 miles S of Selinsgrove. Watch for auction arrows off RT 35 (first road W of Kantz) at Martin's Farm Market or off RTS. 11 & 15 bypass.

FRI., APRIL 7, 1995
Sale Starts at 11 a.m.



200 • HOLSTEIN DAIRY HEIFERS • 200

Consists of 50 from Shortbreds to Springers. 75 from 500 to 700 lbs & 75 from 300 to 500 lbs.

30 Day Health Charts • Interstate Shipment
95% Calfhood Vacc.
Preg. Checked • Shipping Fever Shots
Dairy Sale Under Cover
Breeding Age Bull - has been used.

The Martin Boys have put together an exceptional group of cattle for this year's sale. If you need replacements, don't miss this sale. Also big strong heifers, just ready for pasture. Still accepting a few choice acclimated consignments.

TERMS: Cash or good check day of sale. Out of state buyers must have current bank letter of credit guaranteeing funds.

TERMS BY:
ETHAN & CARSON MARTIN
RR 3, Selinsgrove, PA



SALES MANAGERS & AUCTIONEERS
RD#4 Murry, Pa • Lic. #9771L • (717) 646-0807
Now in Our 3rd Generation of Auctioneering
THE NAME OF AUCTIONS SINCE 1962