

Public Auction Register

Closing Date Monday 5:00 P.M.
of each week's publication

FRI. APR. 14 - 9AM Real Estate, Household Goods, Antiques, Car & Riding Mower. Located 2 Mi. South of Lititz Turn East off Rt. 501 Onto 219 Owl Hill Rd., Warwick Twp. Lanc. Co., PA. Terms by Dorothy H. Peters, Robert E. & Jeffrey R. Martin Auctioneers.

FRI. APR. 14 - 9AM 161 Acre farm, 7 tractors, equip, Gruber haywagon and tools. Held at 171 Swisssdale Rd., Bernville, Berks Co, Pa. Traveling on Rt. 183 turn at Bernville Fire Co., cross over Main St. and follow Penn Valley Rd. for approx. 1 1/2 miles to Swisssdale Rd., go right for 2/10 mile to auction site. For Irvin Bagenstore Estate. David P. Loeb, auct.

FRI. APR. 14 - 10AM Baseball cards, Murry Auction Emporium, 23 N. Water St., Lititz, Pa. E.M. Murry Assoc., aucts.

SAT. APR. 15 - Peiffer Hill Consignment Sale of Lawn & Garden Equip. & tractors. Located Church St. thru Reamstown to Red Run Road. Turn left to Steffy Rd. Turn left to Auction on left. Kline, Kreider, Good, auct.

SAT. APR. 15 - Annual Consignment Sale. Rt. 74 N. Of Carlisle. Wickard Bros. Auctioneer.

SAT. APR. 15 - 1st Annual Smithsburg Fire Co. Consignment Auction, Smithsburg Fire Co. Smithsburg, MD. Gossert's Auction Service.

SAT. APR. 15 - 8:30AM, Antique Cars, Tractors, Farm Equip., Harley Davidson Motorcycle, Auto. & Motorcycle Parts, Bank Adv. Auto Banks, Farm Toys, Train Sets, Marbles, Adv. Tires, Ash Trays, Plasticville Building, Hit & Miss Engines, Lawn Mowers & Manuals Located at 376 Latimore Creek Rd., York Spring, Pa. If Traveling On Rt 15 Go 7 Miles South Of Dillsburg, Pa. To Worley's Fruit Stand. Turn Right Onto Mt. Rd. First Road To Right, Turn Onto Latimore Creek Rd. Go 3/4 Mi. To Sale On Left Side. Signs Posted. Ivy N. Bank-

ert, Owner. Little lke Eichelberger, Auct.

SAT. APR. 15 - 9AM Real Estate, Antiques, Collectibles, Household Items,

Car, Lawn Tractor & Boat. Property Located Approx. 2 Mi. West of Millintown, Along Old Rt. 22, But Will be Offered for Sale at Juniata Markets, Jct. of Rts. 75 and Old Rt. 22, at the Blinking Lights, 1 Mi. North of Port Royal, Juniata Co. The Estate of Jean C. Esh. Long's Auction Service.

SAT. APR. 15 - 9AM Farm Equipment & Misc. Items. Rt. 522 12 Mi. North of

Lewistown, PA. Blaine Rentzel Auctioneer.

SAT. APR. 15 - 9AM Estate of Arletta Anspach, Pine Grove, Pa. Contents. Dwight D. Miller, auct.

SAT. APR. 15 - 9AM 1 1/2 story brick dwelling, real estate, antiques, household goods, woodworking tools. 75 E. Farmersville rd., West Earl Twp, Lanc. Co. Pa. By Esther White.

Horst Aucts.
SAT. APR. 15 - 9AM Real estate & personal property

of the late Barbara Kirchner. Freeburg, Pa. Hasinger & Courtney Aucts.

Rawlinsville Volunteer Fire Co. 27th Annual All Day Auction Saturday, April 8 8:30 a.m. sharp

Location: 272 South to Truce, Turn right onto Truce Road, go to stop sign, turn left, sale on right.

Consisting of: Shrubbery and plants, antiques, building materials, new and used tools, lawn, garden and farm equipment. Many items too numerous to mention.

Note: Items to be sold on commission basis or may be donated. **Items must be in good condition.** No appliances, tires, cars, trucks or **SMALL HOUSEHOLD GOODS.** Sale Committee reserves the right to refuse any or all items for the sale. No out of state checks accepted.

Donated items appreciated. Items will be received on Sat., April 1 from 9:00 a.m. to 3:00 p.m., Mon., April 3 and Tues., April 4 from 4:00 p.m. to 8:00 p.m., Wed., April 5 from 12 noon to 8:00 p.m. and Thurs., April 6 and Fri., April 7 from 9:00 a.m. to 8:00 p.m. **No items will be taken for sale on day of auction. Do NOT drop items off during off hours the week before the sale.**

For more information, call (717) 284-3023, 786-7982 OR 284-5086. Great food by the Ladies Auxiliary and others.

Terms and conditions by **Rawlinsville Sale Committee**

Local and Well Known Auctioneers
Diller-AU-00026L

FARM AUCTION SAT., MARCH 25th, 1995

10:00 A.M.
FARM MACHINERY & RELATED ITEMS

Date J. & Sara Bresler will sell the following farm machinery & related items at their farm. Located in Centre Co., approx. 10 miles West of State College, Pa. - off Rt. 45 onto Marengo Rd. (at Penna. Furnace Sign) Follow auction signs from Rt. 45

TRACTORS

MASSEY FERGUSON 1105 Diesel Tractor w/Cab & Rebuilt 6 cyl Engine Wide Front, INTERNATIONAL FARMALL 856 Diesel Tractor - Wide Front, 3 Pt Hitch - 80% Rubber YANMAR MOD. 276D Diesel Tractor - 4 Wheel Drive - 3 Pt Hitch - 817 Hrs (Bought New) - w/Yanmar YFL-1000 Hydr Loader - Maternal Bucket & Pallet Fork ALLIS CHalmers 170 Diesel Tractor - Wide Front - New Engine FARMALL M - Narrow Front End FARMALL SUPER C - Narrow Front

FARM MACHINERY

1900 NEW HOLLAND 1496 Self Propelled Haybine w/4 Cyl Diesel Engine - 1100 Hrs. 1990 NEW HOLLAND Mod. 790 Forage Harvester w/2 Row Narrow Corn Head & Grass Pickup Head w/Elec Controls & 540 PTO, NEW HOLLAND Mod. 824 Adjustable Corn Head to Fit Either (890, 892, 790, 782, or 900) Excel Cond., NEW IDEA Mod. 325 2 Row Narrow Pull Type Corn Picker w/329 Super Sheller (Has Attach for Picking Corn). New Idea 486 Round Baler used 150 bales (like new), ALLIS CHALMERS 4 Row Narrow - No Till - Corn Planter w/Insecticide & Dry Fertilizer Boxes, INT. 16 Hoe Double Disc Grain Drill w/Fert., Grain & Alfalfa Box, BADGER BN 950 - 14 Ft. Forage Wagon w/Tuple Beaters & Roofs (2 Years Old), 2 - BADGER 14 Ft Forage Wagons w/Roofs, GEHL 4500 Gas Skid Steer w/60 Inch Maternal Bucket, 2 - UNVERFERTH McCURDY 275 Gravity Wagons - 8 Ft Wide w/10 Ton Running Gears, MASSEY HARRIS Mod. 35 Combine - 4 Cyl Gas w/8 Ft Grain Head, MARTIN 1665 Front Unloading Open Top Manure Spreader, Favorite Gravity Wagon, 7 Ft - 3 Pt Hitch, BUSH HOG Rotary Mower (Good Cond.), NEW HOLLAND mod. 256 5 bar Hay Rake, JOHN DEERE 14T Hay Baler, ALLIS CHALMERS 8 Ft Transport Disc, CALUMET 3750 gal Manure Spreader, ALLIS CHALMERS 3 pt Hitch 3x16 Mounted Plow, 1971 INT Pick Up Truck Mod 1210 V8 4x4 - (rough), SHAVER 3 Pt Post Digger, 9" Extension Pipe for Filling Trench Silo w/Directional Spout, NEW HOLLAND 28 Hopper Blower w/540 PTO Shaft, JOHN DEERE 30 Ft Hay & Grain Elevator w/Elec Motor, 12 Ft Drag Harrow, 16 Ft Tandem Flat Bed Trailer, GEHL 6 ft Flail Chopper (for Parts), 280 Gallon Fuel Tank, 4 Ton of Soft Coal, Side Weights for 20 Series J Deere Tractor, 21 Large round Bales of Hay, Plus Other Misc Farm Related Items

TERMS; Cash Or Check - Day of Auction. Out of State Buyers will Need Letter of Credit From Their Bank.

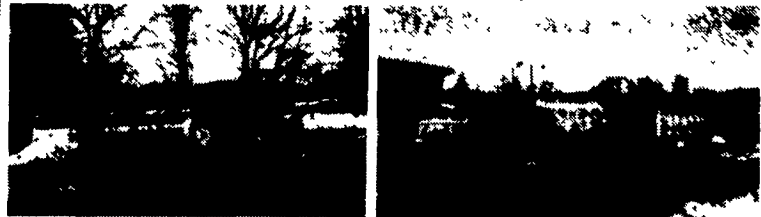
Sale by: **DALE J. & SARA BRESLER**
814-692-5530

(Food Available) & Porta-Pot
Auctioneers: RON J. & RON S. GILLIGAN
#AU339L & #AA2223L
All announcements day of Auction take Precedence Over All Written Ads Owner or Auctioneer not responsible in case of accident

DAVIES HOLLOW FARM DISPERSAL AUCTION JOHN & MARIA NYE

APRIL 1, 1995 10:00 AM

10 SABBADY LN
WASHINGTON DEPOT, CT



TRACTORS: JD 4250 mfwd & JD 3150 mfwd w/265 loader Tractors, Ford 420 industrial Backhoe/Loader, Trojan 4000 Loader, MF 255 Tractor, IMT deluxe 577 mfwd tractor, Yammar 240D Tractor w/60" finishing mower, NH 555 Skid Loader

TRUCKS: 1986 IH S-2600 tandem axle Truck w/22.5' steel coal Dump body, 1980 IH S-1854 Truck w/16' aluminum Dump body, 1974 Brockway 358 tri-axle Truck w/18.5' aluminum Dump body

EQUIPMENT: JD 7200 6 row no-till Corn Planter, JD 1635 16' disk Harrow, Custom made 45' 3 pt. Spray Boom, JD 1460 disc Mower Conditioner, JD 660 side delivery Rake, NH 316 Baler, JD 3970 Forage Harvester, JD 7.5' windrow pickup, row-trak 3 row Corn head & row-trak 343 Snapper head, Meyer 518SF self unloading wagon, JD 780 hydra-push Manure Spreader & FULL LINE OF OTHER EQUIPMENT!

CALL TO HAVE FULL FLYER SENT OR FAXED!



DIRECTIONS: From Rt. 84 in DANBURY, take Rt. 7 north to Rt. 202 east to a right onto Rt. 47, to a left onto Rt. 109 for 1 mile to a left onto Sabbaday Ln.
LUNCH AVAILABLE
TERMS: Cash or certified check on the day of the sale. Personal or business checks will be accepted with bank letter of credit or if known by the auctioneer.
NO BUYERS PREMIUM

Public Auction

TUESDAY APRIL 4, 1995 9:30 A.M.

SYLVESTER DEAVEN ESTATE

TRACTORS • TRUCK • COMBINE • FARM MACHINERY • GRAIN DRYER & BINS • TOOLS

LOCATION: 6700 Jonestown Rd, Harrisburg, Lower Paxton Twp., Dauphin County, PA from Rt. 22/Rt. 39 traffic light - west on Allentown Blvd./Rt. 22 for 2 1/2 miles to grass median - left onto Jonestown Rd. .9 mile to farm on right. From I-81 Paxtonia Exit - S. on South Mountain Rd. to 2nd traffic light - left 1 mile on Jonestown Rd. to farm on left.

JOHN DEERE TRACTORS

JOHN DEERE 2950 MFWD diesel w/Sound Gard Cab - 18.4x34 - dual hydraulics - 3030 hours
JOHN DEERE 2550 MFWD diesel w/Sound Gard Cab
15.5x38 - dual hydraulics - 1000 stub shaft - 2510 hours
JOHN DEERE 2840 diesel utility with allied #22 loader w/buckets - 2600 hrs (sold as unit)

GRAIN EQUIPMENT

1970 CHEVROLET C/60 Twin screw with 5/4 overdrive
427 gas engine - 8'x18' OMAHA STANDARD bed w/heavy duty piston lift
MASSEY FERGUSON 550 Cummins diesel clutch drive combine w/cab & AC
MF 13' grain platform w/alum. reel & MF 4x38 corn head (sold separate from combine)

ALLIED 350 bushel continuous flow pto dryer w/shed; (2) 18' 3200 bu & 21' 4200 bu. metal bins w/drying floors; 4" bin unloading auger; aerator fan; sweep; NEW IDEA 6'x40' trans. pto auger; 6'x14' auger w/motor; 6'x20' auger.

TILLAGE and PLANTING EQUIPMENT: WHITE #508 4x18" spring reset plow w/hillside hitch & coulters; JOHN DEERE 215 transport Dura Cushion 32 disc harrow; SOILMASTER 7 tooth transport chisel plow w/buster bars and front discs; BRILLION 10 1/2", 11" & 12 1/2" cultipackers; cultipacker transport; MF #33 grain drill - 7x17 disc w/grass seed attachment; JOHN DEERE 7000 4x38 corn planter w/dry fertilizer and insecticide.

PLANTING and HARVESTING EQUIPMENT: NEW HOLLAND 326 baler w/#70 thrower w/hyd. swing & elec. belt speed controls - flotation tires (super clean); NH 479 mower conditioner; KUHN 3 pt. gyro rake; NH #162 tedder; 24' Smoker elevator; bale conveyor; NEW IDEA Cutditioner; **WAGONS:** Kreider 8'x18' wooden hay side; (3) 8'x18' wooden hay sides; McCurdy gravity bin on 5 ton gear; McCurdy bin w/hyd. fertilizer unloading auger on gear.

MISC. FARM EQUIPMENT: Old CLARK gas forklift w/pneumatic tires; 3 pt. rear blade; 3 pt. side dresser; Ford 3 pt. post hole digger; Vicon pto transport fertilizer spreader; 6 KW pto transport alternator.

FARM RELATED ITEMS: JD front weights; 3 pt. adaptor; DANUSER 3 pt. 24" hyd. wood splitter; (2) fuel tanks w/pumps; Vac A Way seed cleaner; platform scale; small pto broadcaster; coal chute; grease cans; barb wire; asst. used lumber; 7200 baler twine; 55 gal. drums; Oliver pulleys; tow & tire chains; ropes; ladders; mtd. wood saw; scrap iron, etc.

TOOLS and SHOP EQUIPMENT: Craftsman & Buffalo metal cutting band saws; large SMITH milling machine; large metal lathe w/belt drive; 20 ton hyd. press; CENTURY 225 amp. wire feed welder w/bottle; Knipco heater; Echo & Stihl chain saws; gas string trimmer; cords; pipe clamps; wrenches; hammers; 1/4" to 3/4" socket sets; pipe wrenches; adj. wrenches; pipe threader; tire irons; tap & die set; drill bits; battery chargers; hyd. jacks; wooden work bench w/drawers; DeWALT radial arm saw; bench grinder; wooden planes; tin shears; turkey crates; cedar shingles; port. air compressor; lrg. anvil; welding table; bolt cutters; blacksmith tongs; come-along; buckets of bolts & hardware & many other shop items.

Well maintained - shed kept and field ready machinery - Cylinders on the equipment - loader tractor available auction day - toilet facilities - good food all day. **TERMS:** CASH or approved check. All out-of-state buyers and persons unknown to auctioneer **must have** current bank letter of credit addressed to this auction.

AUCTION ORDER: Starting w/small items, tools, etc. - 12:30 Combine, Truck, grain equipment, farm equipment, tractors - balance of small items if not sold before 12:30. Auction day telephone 270-8504 or 545-3948.



Auction by Executor
HAROLD E. DEAVEN
(717) 545-8566