

Central U.S. Carlot

Pork Report

Tuesday, March 15, 1995

Report supplied by USDA

CENTRAL U.S. CARLOT PORK REPORT FOB OMAHA BASIS INCLUDES MAJOR PRODUCTION AREAS IN MIDWEST AS OF 3 P.M. COMPARED MONDAY'S 3:00 PM CLOSE: FRESH LOINS MIXED, A STEADY TO FIRM UNDERTONE IS NOTED FOR IMMEDIATE DELIVERY AND A WEAKER UNDERTONE PREVAILS FOR MID NEXT WEEK DELIVERY; BUTTS 1.00 LOWER; SKND. HAMS 1.00-2.00 LOWER; SDLS BELLIES 2.00 HIGHER. TRADING GENERALLY MODERATE WITH LIGHT DEMAND AND MOSTLY MODERATE OFFERINGS.

LOADS PORK CUTS: 86.5
41.5 LOADS TRIM/PROCESS PORK/PORK CUTS

LOINS, REGULAR, FRESH
14-18 LBS., * 9.5 LOADS, RANGE 92.00-102.00, WGHTD. AVG. 98.47.
1/2" TRIM 14-18 LBS., 9.0 LOADS, RANGE 110.00-122.00, WGHTD. AVG. 117.28.

1/2" TRIM/LESS 14-18 LBS., 0.5 LOADS, RANGE 126.00, WGHTD. AVG. 126.00.

18-22 LBS. *, RANGE 96.00, WGHTD. AVG. 96.00 E.
1/2" TRIM 18-22 LBS., RANGE 115.00, WGHTD. AVG. 115.00 E.

COMBOS 22 LBS. AND UP, 1.0 LOADS, RANGE 64.00, WGHTD. AVG. 64.00.

LOIN, BNLS CNTR CUT
5-9 LBS. STRAP-ON, RANGE 213.00, WGHTD. AVG. 213.00 E.

5-9 LBS. STRAP-OFF, RANGE 231.00-236.00, WGHTD. AVG. 235.00 B.

BNLS SIRLOIN
75-1 LB., RANGE 123.00, WGHTD. AVG. 123.00 A.

TENDERLOIN
1.25 LBS. AND DOWN, RANGE 293.00, WGHTD. AVG. 293.00 B.

PICNIC, FRESH
SMKR TRM, RS., COMBO, RANGE 36.00-41.00, WGHTD. AVG. 38.50 B.

COMMODITY 4-8 LBS., RANGE 28.00, WGHTD. AVG. 28.00 D.

BOSTON BUTT
4-8 LBS., * 8.0 LOADS, RANGE 43.00-47.00, WGHTD. AVG. 45.06.

1/2" TRIM 4-8 LBS., 8.0 LOADS, RANGE 61.00-65.00, WGHTD. AVG. 63.50.

SPARERIB, FRESH
1.5-3.5 LBS., RANGE 108.00, WGHTD. AVG. 108.00 D.

3.5-5.5 LBS., 1.0 LOADS, RANGE 86.00, WGHTD. AVG. 86.00.

5.5 LBS. AND UP, 0.5 LOADS, RANGE 45.00, WGHTD. AVG. 45.00.

SPARERIB FROZEN
5.5 LBS. AND UP, 0.5 LOADS, RANGE 45.00, WGHTD. AVG. 45.00.

LOIN BACKRIB (BOXED) FRSH/FRZN
1.75 LBS.-2.00 LBS., RANGE 231.00, WGHTD. AVG. 231.00 B.

2.00 LBS. AND UP, 0.50 LOADS, RANGE 215.00, WGHTD. AVG. 215.00.

LOIN BACKRIB (COMBOS) FRSH/FRZN
1.75 LBS. AND DOWN, RANGE 249.00, WGHTD. AVG. 249.00 D.

HAM, SKINNED, SELECTED FRESH 14-17 LBS., RANGE 62.00, WGHTD. AVG. 62.00 B.

FRESH 17-20 LBS., 11.0 LOADS, RANGE 55.00, WGHTD. AVG. 55.00.

FRESH 20-26 LBS., 7.0 LOADS, RANGE 49.00-51.00, WGHTD. AVG. 49.86.

HAM, SKINNED, COMMODITY FRESH 17-20 LBS., UNQUOTED.

FRESH 20-26 LBS., 9.0 LOADS, RANGE 48.00, WGHTD. AVG. 48.00.

FRESH 32 LBS. AND UP, 3.0 LOADS, RANGE 52.00, WGHTD. AVG. 52.00.

BELLY, SDLS SKIN-ON, FRESH
FRESH 10-12 LBS., 2.5 LOADS, RANGE 34.00-37.00, WGHTD. AVG. 35.20.

FRESH 12-14 LBS., 7.5 LOADS, RANGE 39.00-40.00, WGHTD. AVG. 39.80.

FRESH 14-16 LBS., 14.5 LOADS, RANGE 39.00-40.00, WGHTD. AVG. 39.40.

FRESH 16-18 LBS., 3.0 LOADS, RANGE 39.00, WGHTD. AVG. 39.00.

FRESH 18-20 LBS., 5.0 LOADS, RANGE 33.00-34.00, WGHTD. AVG. 33.60.

FRESH 20-25 LBS., 3.0 LOADS, RANGE 28.00-30.00, WGHTD. AVG. 28.67.

PORK TRIMMINGS/ BONELESS PROCESSING PORK (CHEMICAL LEAN)
COMBO 42% FRESH, 11.0 LOADS, RANGE 25.00-26.00, WGHTD. AVG. 25.75.

COMBO 72% FRESH, 16.5 LOADS, RANGE 34.00-35.00, WGHTD. AVG. 34.45.

BOXED 72% FROZEN, 8.0 LOADS, RANGE 41.00, WGHTD. AVG. 41.00.

BONELESS PICNIC MEAT COMBO 72% FRESH, 3.0 LOADS, RANGE 41.00-44.00, WGHTD. AVG. 42.00.

BOXED 72% FROZEN, RANGE 51.00, WGHTD. AVG. 51.00 C.

SKINNED JOWLS COMBO FRESH, 3.0 LOADS, RANGE 19.00-23.00, WGHTD. AVG. 21.00.

BOXED FROZEN, UNQUOTED.

NOTE! (*) REFLECTS 1/2" OR 3/4" TRIMMED PRODUCT BROUGHT BACK TO A REGULAR COMMODITY BASIS.

ABCDE AFTER QUOTES REPRESENTS DAYS SINCE LAST ACTUAL MARKET TEST. QUOTES ARE DROPPED AFTER 5 DAYS OF NO TEST OR BEFORE IF THEY NO LONGER REFLECT CURRENT MARKET CONDITIONS.

PORK CARCASS CUTOFF WEDNESDAY, MARCH 15, 1995

ESTIMATED GROSS CUTOFF VALUES OF A 175 LB. HOG CARCASS BASED ON USDA CUTTING YIELD TESTS AND CARLOT PRICES. WEDNESDAY'S CARCASS GRADES AND PRICES PER CWT.:

US#1 56.82, CHANGE FROM TUESDAY'S VALUE -0.58; US#2 55.16, CHANGE FROM TUESDAY'S VALUE -0.53; US#3 53.50, CHANGE FROM TUESDAY'S VALUE -0.48; US#4 51.85, CHANGE FROM TUESDAY'S VALUE -0.42.

TODAY'S CALCULATIONS FOR US#2 175 LB. PORK CARCASS: SKINNED HAMS, 14-20 LBS., 21.01% OF CARCASS, 55.00 FOB VALUE, -1.50 CHANGE FROM TUES.; LOINS, 1/2" TRIM, 14-22 LBS., 20.33% OF CARCASS, 116.00 FOB VALUE, -2.00 CHANGE FROM TUES.

BELLIES, SDLS, 12-14 LBS., 13.90% OF CARCASS, 39.50 FOB VALUE, 2.00 CHANGE FROM TUES.; SPARERIBS, 3.5DN LBS., 3.03% OF CARCASS, 104.75 FOB VALUE.

PICNICS, 8-12 LBS., 10.31% OF CARCASS, 28.50 FOB VALUE; BUTTS, 1/2" TRIM, 4-8 LBS., 7.25% OF CARCASS, 64.50 FOB VALUE, -1.00 CHANGE FROM TUES.

JOWL, 2.85% OF CARCASS, 21.00 FOB VALUE; NECKBONES, 1.52% OF CARCASS, 9.00 FOB VALUE.

FEET, 1.05% OF CARCASS, 19.00 FOB VALUE; TAILS, 0.22% OF CARCASS, FOB VALUE 35.00.

TRIM 72%, 2.19% OF CARCASS, 34.50 FOB VALUE, -0.50 CHANGE FROM TUE.; LARD 10.85% OF CARCASS, 18.25 FOB VALUE.

TOTAL CARCASS 94.51%. US#2 CARCASS VALUE PER CWT. 55.16.

NOTE: VALUE MAY CHANGE WITHOUT ADEQUATE TEST.

Young Cooperator Contest

SOUTHAMPTON (Bucks Co.)—Ten young farmer members of Atlantic Dairy Cooperative will compete in the 25th annual Pennmarva Young Cooperator Contest March 22-24 at the Holiday Inn in College Park, Md.

Sponsored annually by the Pennmarva Dairymen's Federation, the contest recognizes outstanding leadership skills and knowledge of cooperatives. A panel of three judges will select an outstanding young cooperator winner and four runners-up. The 10 contestants, known as young cooperators, were selected to participate in the program based on their dairy proficiency and community leadership.

The contestants and the Atlantic districts they represent are: Theodore C. and Patricia H. Miller of Pilesgrove N.J., District 2; Axel J. and Susan W. Linde of Oxford, District 3; Jeffrey F. and Cindy H. Moore of Centreville, Md., District 4; J. Robert and Beth E. Ranck of Paradise, District 12; and Glenn and Kathy Pugh of Shippensburg, District 15.

Also, Kenneth E. Kehr of Lit-

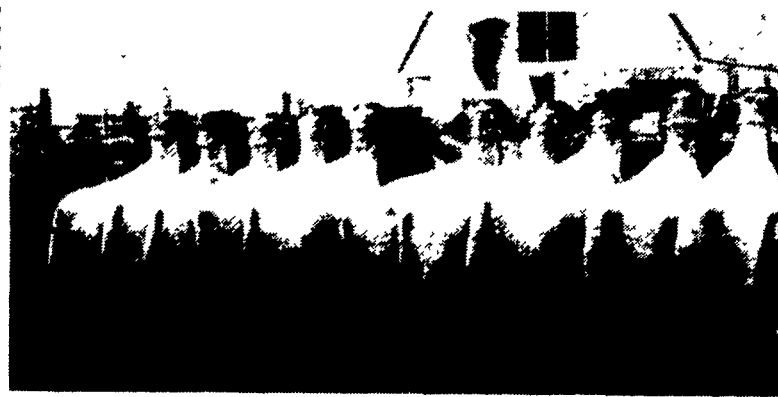
lestown, District 16; Allen P. Kretzing of Loysville, District 18; Steve R. and Melissa J. Snyder of Pitman, District 19; Dale W. and Jane L. Ray of Williamsburg, District 20; and I. Dwayne Musselman of New Enterprise, District 21.

Atlantic's Young Cooperator program is designed to educate young farmer members about cooperatives and the dairy industry. The yearlong program, which includes attendance at board of director meetings, the annual delegate meeting and educational seminars, develops leadership among cooperative members, ages 21 through 40.

One other member of the Pennmarva Dairymen's Federation—Maryland and Virginia Milk Producers Cooperative Inc.—also announces its Outstanding Young Cooperators during the three-day contest.

Atlantic Dairy Cooperative represents nearly 4,000 dairy farm families in Pennsylvania, New York, New Jersey, Delaware, Maryland, Virginia and West Virginia.

MEAT MATTERS MOST



I spent this week at home on spring break from University of Kentucky. Our lambs look great. I won't be able to show this year. My loss is your opportunity. Call now to schedule a time to get your lamb.

ROBERT DINSMORE CLUB LAMBS
5842 Broad Run Rd., Jefferson, MD 21755
1-800-331-9122 Evenings 301-371-4483

POND OWNERS
Eliminate algae organically!

Algae-eating Grass Carp are finally available to pond owners in Pennsylvania. Grass Carp provide a low cost, highly effective, long-term organic alternative to the use of poisonous and polluting chemicals in the control of undesirable aquatic plants.

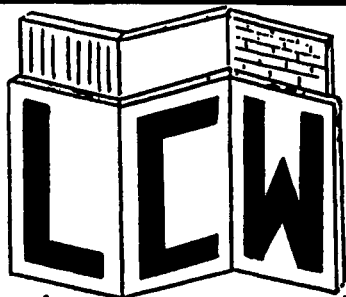
Each Grass Carp:

- Consumes up to 5 lbs. of algae per day.
- Is government certified for algae control.
- Has a lifespan of up to 17 years.

Call us now to arrange:



Willey Aqua-Farm & Fish Hatchery
(800) 836-2171



LANCO
CONCRETE
WALLS

Agricultural • Commercial • Residential

WE DO SCS WORK - ALL TYPES OF POURED WALLS

- Retaining Walls
- Manure Pits (circular or rectangular)
- Footers
- Bunker Silos
- Slatted Floor Deep Pits
- Flatwork

CONTACT: STEVE PETERSHEIM, JR.

P.O. Box 256, Bird-In-Hand, PA 17505
717-291-4585 • (FAX) 717-291-4686

SCHICK ENTERPRISES

Designers and Builders
Quality Hog Buildings

Also Dealer For Airstream Helmets

FENCING
Concrete
or
steel

CONCRETE
Slats

WATERING
Systems

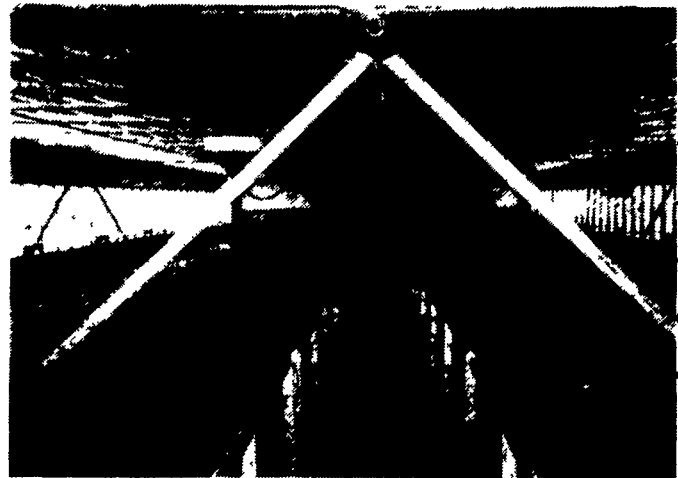
ADA
PLASTIC
COATED
FLOORING

MODERN AG
SS FEEDERS

G.S.I. BINS
&
Fill Systems

LIFETIME
HYDRAULIC
TRAILERS

AAA
VENTILATION
LIFETIME
GUARANTEE



1-800-527-7675 (610) 285-6519