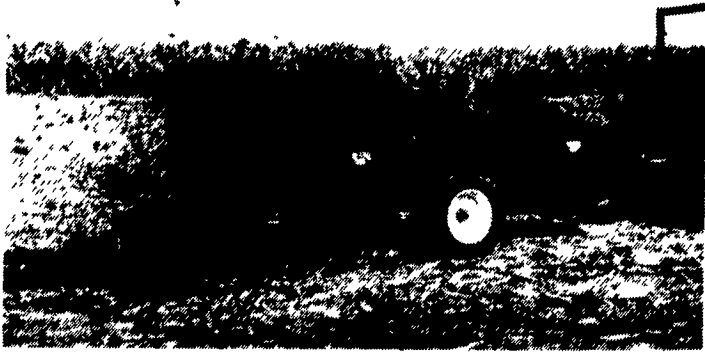


At Last... A Line Of Manure Spreaders Designed For The Low-Input Farmer.

Affordable and well-built, but no extra frills design.
Made for the way you work.



- 7 Sizes available from 25 to 128 bu.
- Ground Drive or PTO.
- High-Density polyethylene floor comes with 20 year warranty.
- Prices start under \$1,000 (plus freight)

If you're in need of a manure spreader but can't justify spending \$4,000 for one, then call us now for a free brochure and price list.



2617 Stumpton Rd., Dept. LF
Bird-In-Hand, PA 17505
(717) 656-3050

Dealer Inquiries Invited

Just Available! Used Tractor Price Guide



1995
Consumer
Edition

For over 45 years, Intertec has made a business of knowing the used equipment market. That's why we're able to offer you comprehensive tractor pricing, specification and loan value information. Introducing the **1995 Used Tractor Price Guide**. Covering over 25 manufacturer's models from 1970-1994, this handy reference provides you with detailed information on engine size, transmission speeds, PTO hp, drawbar hp, shipping weight, approximate retail price when new, estimated trade-in values (high and low) and more. You'll also find special sections covering tractor serial numbers and their locations. Covering many tractors from 1924 through 1992. So if you're buying or selling a tractor...or just interested in model specifications, turn to the **1995 Used Tractor Price Guide** for complete reference information. 1995 editions/5.5x8" softbound/Enlarged Edition 320 paper pages \$9.95.

NEW! CLASSIC TRACTOR COLLECTORS

□ This book features 29 exceptional collectors, restoring and collecting farm power from the past. Covers many makes, each tractor is shown in brilliant full color. 170 full color photographs. 144 pages. Quality softcover \$26.50.

NEW! JOHN DEERE TRACTORS BOOKS

□ **NEW! "JOHN DEERE TRACTORS WORLDWIDE"** A century of progress 1893-1993 Provides a new insight into Deere-Charting the progress of "The Long Green Line" throughout the world. Over 500 unique photos, 260 in full color, 240 pages. hardcover \$33.50.
□ **NEW! "BIG GREEN"** Just available 80-full color photos combine with detailed text 128 pages. \$19.95. □ **NEW! "JOHN DEERE LIMITED-PRODUCTION & EXPERIMENTAL TRACTORS"** The first ever, history of John Deere experimental, prototype, specials & limited production tractors beginning from 1912, 175 photos, 160 pages \$19.95 □ **DISCOUNT SPECIAL!** All above 3-books regularly \$73.40 for \$65.95.

FREE! COLORED TRACTOR & LIVESTOCK BOOK CATALOG
MASTERCARD, VISA, CHECK, C.O.D.
Shipping & Handling \$4.50 per Shipment

DIAMOND FARM BOOK PUBLISHERS

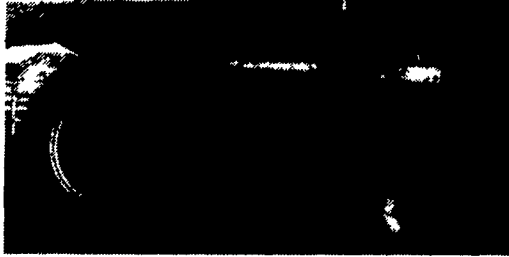
Dept LFP, Box 537, Alexandria Bay, NY 13607
Phone: (613) 475-1771 • Fax (613) 475-3748



ORDER TOLL FREE 1-800-481-1353
TOLL-FREE FAX: 1-800-305-5138



Take Exit 20B
Off Of 83, 5 1/2 MI. West
To Belmont Farm.



IH 1026 Hydro
Rebuilt Trans., Dyno Tested, Nice Cond.
\$8,500
410-833-9091



6650 Farm Hand Tub Grinder
Set up for Mulch. Also Hay Grinder, Excellent
Cond., Electronic Tub, Speed Control
(814)793-3923

USED NEWS

MODEL	YEAR	DESCRIPTION	HOURS	PRICE
Komatsu PC120-3	1987	8' Stick, 24" Pads, 36" Bkt.	2,400 hrs.	\$37,500
Case 580 K	1990	Cab, 4 WD, E-Stick, 3 Bucket	4,400 hrs.	\$33,000
Case 580 K	1988	Cab, 4 WD, Excellent	3,700 hrs.	\$29,900
JCB 1400 B	1988	Cab, 2 WD, E-Stick	1,400 hrs.	\$15,900
Trojan 1900	1980	Gov. Trade, Unbelievably Clean	4,800 hrs.	\$23,000
Cat 922B	1964	Great for Snow or Spring Flowers	-----	\$8,900
Cat D8K	1975	Canopy, Good Condition, Ripper	-----	\$48,000
Cat 235 B	1986	Long, long & wide, Rebuilt Engine	-----	\$114,000
Cat D3B LGP	1987	Canopy, 6-Way Balde	3,900 hrs.	\$25,000
Cat CS-563	1991	84" Dirt Roller, Canopy	1,422 hrs.	\$67,000
Cat CS-433-B	1993	66" Dirt Roller, Canopy	400 hrs.	\$59,000
Cat CB-434-B	1993	55" Double Drum Asphalt Roller	1,900 hrs.	\$56,000
Barber Greene "Pavers"				
(2) BG-245-B	1985-90	Models, Call For Specs	-----	P.O.R.
Blaw Knox PF120		10'-16' Screed	-----	\$7,900

Tom Rosser - Phila., PA - 215-245-2749

Giles & Ransome CAT

Best Buys in Used Equipment

TRACTORS

- Case IH 885
- Case IH 7120 MFD
- Case IH 7120 2WD
- Case IH 5140 MFD
- Case IH 2096
- IH 5088
- IH 485
- Case 430 Mechanics Special
- Case 995
- IH 1086 Mechanics Special
- Case 1370
- Case 1690
- Case 2090
- IH 656 Hydro
- IH 1486
- JD 2950 Tractor
- Farmall 300
- Ford 8N
- Hesston 6066

HAY EQUIPMENT

- NI 486 Round Baler
- NH 78 Baler
- NH 479 Haybine
- NH 1495 SP
- Hesston 1014 s
- Hesston 1090 Windrower
- Hesston 1091 Windrower

- Hesston 1150 Mower
- Hesston 4600 Baler
- IH 445 Square Baler
- IH 1190 Mower Cond.
- Case Inl. 8330 Windrower
- NI 512 12 Ft. Mower Conditioner
- Deutz-Allis 10 Ft. Disc Mower
- Vicon 321 Disc Mower
- JD 1209 Mower

HARVESTING EQUIPMENT

- NI 741 Feeder Throat
- Hesston 2000-100 Harvester
- NI 717 Combine
- NI 844N
- NI 324 Sheller
- NI 727 Husking Bed
- NI 323 1-Row Cornpicker
- NI 325 12 Row Husking Bed
- NI 743 Corn Head
- 705 Uni System w/4 Row Corn Picker
- NI 709 (Parts)
- JD 4435 Hydro (3 yrs. old)

TILLAGE

- Ford 5-Bottom Plow
- Case 16" Reset Plow, 5 Bottom
- IH 550 5 Bottom Plow
- IH 4 Bottom Rollover Plow
- JD 6-18 Plow
- Bush Hog 15 Ft. Disk
- Case 7 Tooth Consertil
- IH 720, 18 5-Bottom Plow
- IH Field Cultivator
- IH 4 Row Cultivator
- Taylor-Way 24 Cushion Disk
- Case 15 Ft. Heavy Disc (Nice)
- JD 4x16 Trip Plow
- JD 5x16 Trip Plow
- IH 735 5-Bottom Vari Width Plow

LOADERS

- Case 1835B
- Case 1835C
- Case 1845 Diesel
- Case 1845B Diesel
- Case W14H (Nice)
- Ford Loader

MISCELLANEOUS

- NH 24 Ft. Elevator

- NH 36 Ft. Elevator
- Hub 48 Ft. Elevator
- Buffalo 40 ft. elevator-Nice
- Gehl 99 Blower
- IH 600 Blower
- IH 56 Blower
- 3 Used Bedding Choppers
- IH 1250 Grinder/Mixer
- Automatic Roller Mill
- NI 213 Spreader
- NI 218 Spreader
- HM 1674 Spreader
- Gehl 250 Spreader
- 500 Gal. Century Sprayer
- Weaverline 430
- IH 5100 Drill
- JD KBB 13x7 Drill
- JD 8300 Drill—Soybean Special
- JD 8350 Drill 21x7
- Miller Spreader
- Gehl 16 Ft. Forage Wagon
- Meyer 16 Ft. Wagon Like New
- 24 Ft., 3 Axle Trailer
- 300 Gallon Sprayer
- Portable Feed Mixer
- Rubber Tire Scraper

**Special Pricing on New Spring Tillage Equipment
Buy NOW For Best Prices**

ZIMMERMAN'S FARM SERVICE, Inc.

1/2 Mile West Off Rt. 501 On School Rd., Bethel, Pa.

717-933-4114

© 1994 CASE CORPORATION
Case IH is a registered trademark of Case Corporation

