

**1 FARM EQUIPMENT**

# WASTE INJECTION SYSTEM

Save Nutrients • Save Compaction • Save Time



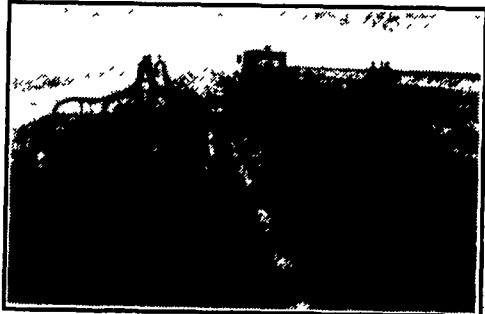
All the benefits of manure irrigation without any of the smell!

## IRRI-JECTION

See It For Yourself On These Farms:

### ALSO: IRRIGATION TOOL BAR DEMONSTRATIONS

- Compared to single gun, increases flow by 25%
- Applies close to the ground, reducing odor and nutrient loss
- Works great in a no-till or limited tillage situation

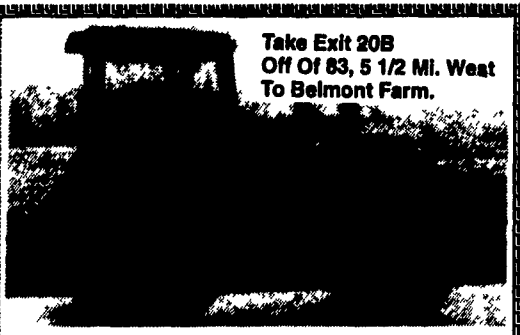


#### SPECIAL INVITATION:

To All SCS Employees, All County Extension Agents, State Engineers, Etc.

For More Information, Call:

**MID-ATLANTIC**  
Oxford, PA  
**AGRISYSTEMS**  
800-222-2948



Take Exit 20B  
Off Of 83, 5 1/2 Mi. West  
To Belmont Farm.

### White 2-135

1 Owner, Clean Unit, Low Hrs., 135 Hp.,  
20.8x38 Radials - 90%

**\$11,500**

#### Also Available:

##### IH 1086

w/Cab, 130H **SOLD** Rubber \$11,500

##### Case 970

w/Cab, 90H **SOLD** Rub. \$7,250

##### MF 1155

w/Cab, 140 Hp., 20.8x38 90% \$6,750

**410-833-9091**

## KEITER'S FARM MACHINERY

Hallifax, PA 17032  
(25 miles North of HBG)  
**717-362-9096**

### TRACTORS

IH 656 diesel, 65 H.P., WF, TA, 3 pt., big rubber

### HAY EQUIP.

NH 269 baler w/thrower, real nice  
NH 30' & 36' elevator  
IH grass head for 720 or 830 chopper  
NH 276 Baler w/58 Thrower, nice  
IH 1190 Haybine  
NH 479 Haybine  
NH 495 Haybine, Good Rolls  
JD #30 Bale Thrower, complete

### MISC.

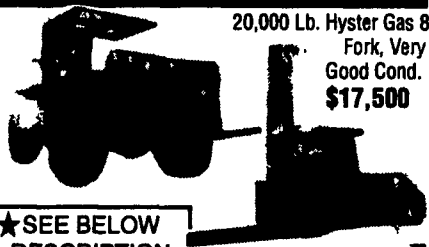
IH 510, 3x16" semi-mounted plow, nice  
Ford 10' wheel disc  
JD 8' wheel disc  
Portable air compressor w/6 cyl. gas engine  
Durham 12' roller harrow  
7' snow bucket off of JD loader  
8' dozer blade for Big Horse power tractor  
NI loader & blade for Farmall H or M  
IH 1150 grinder mixer, nice

## HYMAN EQUIPMENT

BALTIMORE, MD

(410) 337-3570

Call Alan Hyman anytime



20,000 Lb. Hyster Gas 8' Fork, Very Good Cond.  
**\$17,500**

### -MECHANICS SPECIALS- MANY OTHER FORKLIFTS IN YARD - CALL FOR SPECS



8,000 lb. Pneumatic Forklift, LPG, 6' Forks, Side Shift  
**\$3,500**



7,000 Lb. Clark 4WD, Gas **\$7,000**

#### ★ SEE BELOW DESCRIPTION

#### FORKLIFTS

★ (2) 12,000 lb. 4WD forklift, rebuilt 453 Detroit Diesel eng. (0 time).....	\$14,000 & \$16,000
4,000 lb. Clark pneumatic LPG, good cond. ....	\$3,700
2,500 lb. Clark electric, w/charger .....	\$2,500
15,000 lb. Trojan articulating, 7' forks, Cummins diesel, very good cond. ....	\$15,000
5,000 lb. Hyster, side shift solid tire, LPG, 1987, 3-stage, excel. cond., low hrs. ....	\$10,000
4,000 lb. Towmotor, solid tire, LPG, P/S, light rattle & forks won't come down.....	\$1,200
2,500 Lb. Hyster 3 Wheel Pneumatic Gas, Auto, P/S, Very Good Cond.....	\$3,000
3,000 Lb. A/C LPG Runs.....	\$800
10,000 lb. Hyster Karry Crane, runs good .....	\$6,000
5,000 Lb. CAT, solid tire, LPG, S/S, very good.....	\$5,000
5,000 Lb. Hyster solid tires LPG, 3 stage very good .....	\$4,500
4,000 Lb. Baker electric, new battery.....	\$4,000
3,000 Lb. Raymond Reach Truck, Good Cond. ....	\$3,000
5,000 Lb. Clark, Electric w/charger, very good condition.....	\$3,000
6,000 Lb. Yale, solid, 22' lift.....	\$6,000
Electric Pallet Jacks .....	\$500 to \$800 Ea.

# Smith's Implements, Inc.

12258 Buchanan Trail West, Mercersburg, PA

Phone (717) 328-2244 & 2226



### TRACTORS

Int. 574 Tractor w/loader..... **Call for Details**  
MM445 Gas Tractor w/Wide Front End & 3 Pt. Hitch..... **\$2,600**

### HAY EQUIPMENT

JD 1209 mower conditioner. .... **\$900**  
NH 56 5 bar rake..... **\$1,300**  
NI cut conditioner windrower..... **\$650**  
NH 495 12 ft. Mower conditioner - Good Condition..... **\$3,300**  
Hesston 1085 9 Ft. Mower conditioner w/Lift Cyl. .... **\$2,100**  
NH 495 Mower Conditioner Head on a Hesston Swing-Arm Unit..... **\$1,900**  
IH 1190 9 Ft. Mower Conditioner - Mech. Condition Fair..... **\$1,800**  
JD 1217 mower conditioner w/non clog guards, 7 Ft. .... **\$3,100**

### FORAGE EQUIPMENT

Gehl CB600 forage harvester w/2R corn head & 6' hay pickup head..... **\$2,500**  
JD 3R corn head, excellent condition..... **Call for Details**  
JD 3940 Forage Harvester w/Hydra-Electric Controls, 1000 RPM, Excellent Condition..... **Call For Details**  
JD 3960 Forage Harvester w/Long Tongue & Hydra-Electric Controls, Excellent Condition..... **Call For Details**  
NH900 Pull Type Forage Harvester w/Metal Alert II w/3RN Corn Head & Hay Pickup Head..... **\$12,700**  
JD 3970 Pull Type Forage harvester w/Long Tongue Hydra-Electric Controls and Extras **\$11,000**  
JD 714 forage Wagon On Excellent JD1275 Wagon Gear..... **\$3,200**  
JD3970 Forage Harvester w/Long Tongue, Hydra-Electric Controls, 1989 Model, Gone

Over & Field Ready By Experienced Mech..... **Call for Details**  
JD3RN Corn Head w/New Belts, Knives Reworked..... **\$4,750**  
JD2RN Corn Head, New Style Green Head w/Slip Clutch..... **\$2,800**  
JD2RW Corn Head for Parts or Mech. Special!..... **\$400**  
JD343 Snapper Head - Excellent Condition..... **Call for Price**  
JD Adapter Plate to Put Snapper Head on Forage Harv. .... **\$725**  
JD 5 1/2 Ft. Hay Pickup Head - Early style..... **\$650**

### TILLAGE

JD 235 Dura-Cushion Center Fold Disk Harrow - 15 Ft. 8 In..... **\$6,400**  
JD 875 4-Row Cultivator w/All Extras Available! This Unit Like Brand New!!!  
Used Only 1 Hour..... **\$4,600**

### PLANTERS

IH 56 2 Row corn planter w/dry fertilizer..... **\$750**  
JD 7000 4R Wide or Narrow Conservation Plt w/Dry Fert. Monitor and Extras. Good Clean Plt. Made Field Ready..... **Call for details**  
JD 8250 Grain Drill - 18 x 7 10' w/Fert., Grass Seed Att'h & Hyd. Cylinder..... **\$3,900**

### MISC.

NH 520 Manure Spreader w/Hyd. Endgate, 4 Years Old, Excellent Condition! Couldn't Ask For A Nicer One..... **\$3,600**  
JD 13 Ft. Quick Tach Grain Head w/Love Cutterbar..... **Call**  
Meyers 8 Ft. Snow Blade to MTD on Tractor w/Trip Springs..... **\$1,600**  
NH TR85 Combine in Excellent Condition - Low Hours - Shed Kept! w/13 Ft. Grain Head & 4RW Corn Head. Also has adapter Plate New to Put JD Heads On..... **Call for details**

#### Special prices on demo equipment:

Sunflower 3pt. hitch V-ripper, 4 shank, auto reset..... List \$5900, **Special \$4350**  
H&S 7+4 16' forage box w/variable speed, all steel, roof & 3rd beater..... List \$8400, **Special \$6650**

**Also A Dealer For Sunflower Tillage Equipment And H&S Equipment**