

**S.G. LEWIS & SONS, INC**  
 N. Jennersville Rd.  
 West Grove, PA 19390  
 (610) 869-9440



**TRACTORS**

MF 2135  
 FORD 4500 Tractor  
 Loader Backhoe  
 FORD 801  
 w/Snowplow  
 JD 300B Tractor  
 Loader Backhoe

NH 790 For. Harv.  
 w/Metalert, Like  
 New  
 NH 900 For. Harv.  
 w/Metalert II,  
 NH 415 Discbines  
 NH 260 Rake  
 NH 216 Unitized Rake  
 NH 650 Rd. Baler,  
 Like New  
 Vicon 22' Tedder  
 (2) Dion Forage  
 Wagons  
 NH 304 Side-Delivery  
 Spreader

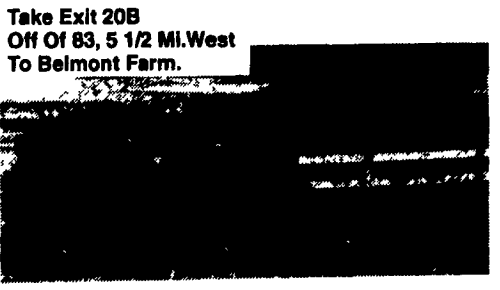
- IH Super M.....\$1,900
- Int Super MTA.....\$2900
- Int 1086, cab, air, sharp.....\$17,900
- IH 2250 Loader.....\$2,900
- IH 806, 1-owner, very good condition...\$7,500
- IH 766, rebuilt engine, TA & clutch, new  
 rubber & paint.....\$11,900
- IH 1086, cab & air, new paint.....\$17,900
- IH 1206, new TA & clutch,  
 rubber & paint.....\$8,500
- IH 1066 w/cab, new TA, clutch  
 & paint.....\$12,500
- IH 856, super sharp!.....\$9,000
- IH 1086, 81 model, cab, air, sharp.....\$18,900
- Case IH 685 4WD w/2255 loader, excellent  
 condition.....\$21,900
- IH 454 dsl., new rubber, new paint.....\$6,500
- IH 340 Utility w/loader.....\$5,500
- IH 1066, low hours, new paint,  
 super sharp.....\$12,500
- IH 340 Utility.....\$3,500
- IH 1486, cab & air.....\$16,900
- IH 686, low hours, excellent condition..\$9,900
- IH 460 utility w/loader.....\$5,900
- Case IH 1120 4 WD w/Loader, blade &  
 mower, 90 hours.....\$13,700
- IH 240 w/snow plow.....\$2,900

Financing Available  
 717-776-5291  
**JEFF SHOWAKER**

Clean off-the-farm, field test tractors  
 Most Reconditioned And Sold With Warranty  
 Positively no out-of-state Personal checks

NH5717 w/3 heads; JD6  
 harvester; JD494A Planter;  
 IH 2R cultivator; cow mats;  
 freestall loops Oliver 3 bot-  
 tom plow. 717/242-6269.

New Idea 363 spreader,  
 single beater w/tailgate  
 exe. cond., \$3500.; INT  
 1966 truck, GVW 26,000,  
 no bed, fair cond. \$400.;  
 717-665-6908.



Take Exit 20B  
 Off Of 83, 5 1/2 MI. West  
 To Belmont Farm.

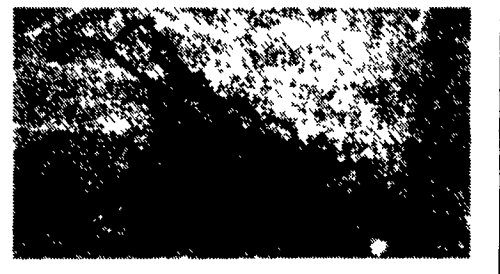
**MF 65 GAS**  
 w/Ldr., Separate Pump and Valves, Live  
 PTO, Pwr. Str.  
**\$3,500**  
**410-833-9091**



**The I & J Cultivator**

CULTIVATORS: 3 point of horse drawn available in  
 1-2-3 or 4 rows can be used as a field cultivator with a  
 few attachments. Great for vegetables. We can cus-  
 tom build. Options: rolling shields, disc hillers, liquid  
 side dressers, row tracking system.

**4% OFF** All Rakes and  
 Cultivators  
 Thru 3/31/95



**GARDEN CULTIVATOR:** Cultivator row width is  
 easily adjusted from 16" to 34". Cultivator includes a  
 narrow single tree. Total weight is 110 lbs. UPS deliv-  
 ery available.

**I & J MANUFACTURING**  
 Dept. LF, 5302 Amish Road • Gap, PA 17527  
**717-442-9451**  
 (Call Between 8:45-9:00 A.M. Weekday Ask For Jake)



**JD 4440 C.A.H.**  
 Quad Shift, 20.8x38, Ex. Cond.  
**\$21,500**  
**717-289-4349**  
 Lenox Farms

**SPECIAL OF THE WEEK**



**MF 390 2228 Hrs., 12 Speed M.P.**  
**\$13,900.00**

- IH 1066, cab.....\$7,500
- IH 685 w/loader, shuttle shift.....\$14,250
- IH 500 ag crawler, gas, PTO, 3 pt., hyd.,  
 front weights.....\$5,900
- IH 186 hydro, new motor, sharp.....\$17,500
- Case IH 5120, ROPS, 1,900 Hrs.....\$18,900
- Case IH 2096, cab, air, 4x4.....\$21,500
- MF 3650, cab & air, nice.....\$21,000
- (2) MF 3545, cab, air, 4x4.....\$23,500
- MF 1155, cab & air, m~~ult~~ipower.....\$7,500
- MF 1135, cab, air, multipower.....\$9,000
- MF 399, 4x4 w/loader, 1,000 hrs.....\$26,500
- MF 390, diesel, multi powered.....\$13,900
- MF 298, 8 spd.....\$8,500
- MF 255, diesel w/loader.....\$8,500
- MF 165, diesel w/loader, square axle.....\$5,500
- MF 298, multipower, ROPS.....\$10,000
- MF 40, cab w/loader.....\$7,500
- White 2-75.....\$9,500
- White 2-70, 4x4 w/cab.....\$9,500
- JD 4320, fenders.....\$9,500
- JD 4020, PS, WF, weights.....\$8,500
- JD 4040, cab, quad.....\$17,000
- JD 3150, 4x4, 4 Post.....\$22,900
- JD 3020, diesel, WF, power shift.....\$6,500
- JD 2750, 4x4, 245 loader w/grapple.....\$20,500
- JD 2750 w/loader, hi-low shift.....\$17,500
- Deutz DX90 fenders, 2WD, nice cond.....\$8,500
- Deutz DX160, cab, air, 2WD, 1000 shaft.....\$8,000
- Deutz DX140, 4x4, cab & air.....\$11,800
- Deutz 6207.....\$6,500
- AC 8050, 4x4, cab, air, powershift.....\$22,500
- Same 4x4, 4 post, 130 h p., 1988.....\$10,500
- Ford 7000 w/c~~ult~~.....\$6,500
- Gehl 4610 diesel skid loader.....\$9,500
- JD 2 row potato digger.....\$1,200
- Taylorway 7' Soil Saver.....\$3,900
- Glenco Soil Saver, 7' S~~oil~~.....\$4,800
- Glenco 7 tooth Soil Saver.....\$2,800
- Brillion 21' fold packer.....\$4,500
- (3) 12' Cultipackers.....\$700 to \$1,000
- Miller offset disc, 12'.....\$4,500
- JD 215 Disc, 14'.....\$2,300
- NH 411 Discbine.....\$6,200
- Case 12' chisel plow.....\$1,100
- MF 880 6x on land plow.....\$2,200
- MF 880 4 & 5 btm. reset plows.....\$1,000 & \$1,200
- White 549 5x reset plow.....\$2,100
- JD 4200, 4 btm., 2 way plow.....\$3,500
- IH 720 plow, 5x18.....Coming In
- JD 400 rotary hoe.....\$1,100
- 24' Fold-up Danish Tine field cultivator  
 w/level harrow.....\$1,800
- White 12' field cultivator.....\$900
- AC 12' field cultivator ~~harrow~~.....\$1,000
- AC 16' hydro fold field cultivator ~~harrow~~.....\$1,500
- IH 12' vibra shank field cultivator w/harrow.....\$1,500
- 6 Ft 3 Pt. Rotary Mower.....\$850
- Vicon centipe~~de~~.....\$650
- MF 15' Flex Head.....\$1,900
- MF Flex Head, Ull Reel, 13'.....\$2,600
- JD 300 corn picker w/343 head.....\$5,000
- IH 7 Shank Auto Reset V Ripper.....\$4,900
- 18.4x38 & 20.8x38 duals.....\$1,000
- White 5100 4RN no-till, dry fert.....\$4,500
- NI 551 baler w~~over~~.....\$4,500
- JD 336 baler w/thrower.....\$2,900
- JD 4420 diesel combine.....\$9,000
- Gehl 99 silage blower.....\$850
- Badger silage blower.....\$500
- NI 224 spreader, top beater.....\$2,000
- NI 353 spreader w/endgate.....\$3,200
- Kato-Light 10KW alternator.....\$1,000

Deutz 6206, low hrs., nice, needs trans. work..\$4,000  
 Financing Available

**L & M BURKHOLDER**  
 Between Brownstown & Rothsville  
 Ephrata, PA  
**Shop 717-859-6616**  
**717-859-2960** **717-859-2712**  
 Mel (Residence) Lloyd (Residence)

**ANNUAL CONSIGNMENT SALE—APRIL 13, 1995**

Stop In During Our  
**OPEN HOUSE**  
 March 22-28, 1995

COFFEE & DONUTS DISCOUNTS ON ALL EQUIPMENT

**NEW HOLLAND WINTER BUYER'S DIVIDEND is back!**

Now's the time to save money on new hay and fofage equipment and lawn and garden tractors you'll need next spring. It's Winter Buyer's Dividend...the pre-season sale that's going on right now!

Come on in an make your best deal. Then, get a big New Holland Winter Buyer's Dividend to apply toward the purchase of:

- Round Balers
- Bale Throwers
- PT Forage Harvesters/Headers
- Crop Choppers
- SP Windrowers
- GT Lawn and Garden Tractors
- Square Balers
- Bale Wagons
- Forage Boxes/Blower/Wagons
- Mower-Conditioners
- Rakes/Mowers/Tedders/ Inverters
- LS Yard Tractors

Great dividends are available whether you pay cash or take advantage of the waiver of finance charges to 9/1/95\*. Hurry in for more details... time is money!

\*Offer available to qualified buyers through Ford New Holland Credit.

FOR YOUR CONVENIENCE, NOW CALL TOLL-FREE **1-800-869-9029**

**S.G. LEWIS & SONS, INC.**  
 N. Jennersville Rd.,  
 West Grove, PA 19390  
**(610) 869-2214**  
**(610) 869-9440**

FORD NEW HOLLAND CREDIT NEW HOLLAND

**VAN DALE WASTE HANDLERS**

**Vacuum Tank Spreader**

- 10 Year pro-rated Tank Body Warranty
- 5 Year Undercarriage Warranty
- Everything you need in a tank spreader

**High Capacity Lagoon Pumps**  
 Trailer & 3 Pt. Mounted

**Tough, Rugged and Reliable - See What A REAL Van Dale Lagoon Pump Can Do**

**Van Dale Tank Spreaders and Lagoon Pumps**  
 In Stock For RENT or SALE

**ROVENDALE AG & BARN EQUIP.**  
 WATSONTOWN PA 17177  
 717-538-9564 OR 717-742-1226  
 Let us help you find the right equipment for your business. Don't forget to call us today!