



State Graded Feeder Pig Sale

at Westminster Livestock Auction
Report Supplied by Auction
March 3, 1995
302 PIGS; LAST MONTH 252 SMALL SUPPLY OF 40-60 LB. PIGS OFFERED. TREND SEEMED 8.00-10.00 LOWER. GRADE 1 AND 2: 42 HEAD 39-46 LBS. 62.00-71.00, 22 HEAD 55-62 LBS. 60.00-64.00, 154 HEAD 75-86 LBS. 50.00-60.00. GRADE 2: 66 HEAD 24-42 LBS. 45.00-55.00. GRADES 2&3: 10 HEAD 18 LBS. 46.00. NEXT STATE GRADED SALE FRIDAY, APRIL 7, 1 P.M.

Lancaster Hogs

Lancaster Stockyards
Saturday, March 4, 1995
Report supplied by auction
There will no longer be a sale auction on Saturday. Sales will be held Monday and Wednesday.

New Holland Hogs

LANCASTER, PA
MARCH 6, 1995
HOG RECEIPTS TODAY 1827
LAST MONDAY 1954
LAST YEAR 807
TREND: Compared to last Monday barrows and gilts steady to 50 lower. BARROWS AND GILTS: US 1-2 210-260 lb 40.00-41.00. US 1 215-245 lb 41.00-41.75, Few 42.00-42.25. US 1-3 210-260 lb 38.00-40.00. US 2-3 220-290 lb 36.00-38.00, Couple 260-290 lb 38.00-38.75.

New Holland Feeder Pigs

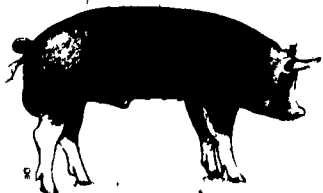
New Holland, PA
Wed., March 9, 1995
Report Supplied by Auction
TODAY: 541 HEAD
LAST WEDNESDAY: 1434 HEAD
LAST YEAR: 615 HEAD
TREND: COMPARED TO LAST WEDNESDAY, FEEDER PIGS 10.00-20.00 HIGHER. ALL PIGS WEIGHED ON ARRIVAL AND SOLD BY THE HUNDRED WEIGHT. GRADE 1-2: 49 HEAD 30-36 LBS. 59.00-74.00, WEIGHTED AVERAGE 33.18, WEIGHTED PRICE 67.63; 323 HEAD 41-49 LBS. 60.00-75.00, WEIGHTED AVERAGE 44.85, WEIGHTED PRICE 71.01; 53 HEAD 50-57 LBS. 66.00-70.00, WEIGHTED AVERAGE 53.51, WEIGHTED PRICE 68.10; 9 HEAD 63 LBS. 70.00, WEIGHTED AVERAGE 63.00, WEIGHTED PRICE 70.00; 8 HEAD 111 LBS. 41.00, WEIGHTED AVERAGE 111.00, WEIGHTED PRICE 41.00. US#2: 62 HEAD 33-38 LBS. 30.00-52.00, WEIGHTED AVERAGE 34.45, WEIGHTED PRICE 39.62.

New Wilmington Graded Feeder Pig Sale

New Wilmington, PA
March 3, 1995
FEEDER PIGS 332. AVERAGES 54 LBS. PER PIG, 30.65 PER HEAD, 56.67 PER HUNDREWEIGHT. ALL PRICES PER HUNDRED WEIGHT. 1-2 40-50 LBS. 60.00-70.00, 50-60 LBS. 60.00-65.00, 60-70 LBS. 45.00-55.00, 70-85 LBS. 35.00-45.00. US#2 30-40 LBS. FEW LOTS 52.50-75.00, 40-50 LBS. 67.50-80.00, LOT 55.00, 50-60 LBS. 50.00-60.00, 60-70 LBS. LOT 47.50, 70-85 LBS. LOT 37.50. US#2-3 40-50 LBS. FEW 40.00-45.00.

Middleburg Hog Report

Middleburg, Pa.
Monday, March 6, 1995
Report supplied by Auction
348 HEAD.
US#1-2 220-260 LBS. 40.00-41.75;
US#1-3 220-260 LBS. 38.00-40.00.
US#2-3 210-265 LBS. 36.50-38.00; #1-3 270-295 LBS. 34.50-38.00.
SOWS: 480-530 #1-3 29.50-32.00; 300-480 LBS. #1-3 27.00-30.00.



Green Dragon Hay

Ephrata, Pa.
Friday, March 3, 1995
Report Supplied by Auction
166 TOTAL LOADS.
MIXED HAY: 42.00-142.00.
ALFALFA: 40.00-120.00.
TIMOTHY: 57.00-117.00.
ORCHARD GRASS: 47.00-82.00.
STRAW: 47.00-120.00.
EAR CORN: 75.00-84.00.
STUBBLE HAY: 25.00.
OATS: 2.20-2.25 BU.
CORN FODDER: 59.00.
FIREWOOD: 25.00 LOAD.

Kirkwood Hay Auction

Kirkwood, Pa.
Tuesday, March 7, 1995
Report Supplied by Auction
115 LOADS OF HAY.
MIXED HAY: 1ST CUTTING 65.00-86.00, 2ND CUTTING 84.00-95.00. TIMOTHY: 77.00-118.00. ALFALFA: 1ST CUTTING 54.00-114.00; 2ND CUTTING 50.00-144.00; 3RD CUTTING 77.00-120.00; 4TH 68.00-100.00. CLOVER: 70.00-86.00. GRASS: 58.00-106.00. WHEAT STRAW: 86.00-120.00. BARLEY STRAW: 100.00-116.00. RYE STRAW: 92.00-116.00. OAT STRAW: 75.00. CORN FODDER: 27.00. FIREWOOD: 50.00 LOAD. SALE TIME 11 A.M.

Indiana Hogs

SPRINGFIELD ILLINOIS
THURSDAY MARCH 09, 1995
INDIANA-OHIO DIRECT HOGS OPENING
BARROWS AND GILTS: STEADY TO .25 LOWER. DEMAND MODERATE. US 1-3 230-260 LBS. 36.50-37.50, FEW 36.00 & 38.00-38.25. US 2-3 230-260 LBS. 32.00-36.00 210-230 LBS. 28.50-32.00
SOWS: NEAR STEADY. US 1-3 300-500 LBS. 27.00-32.50 500-650 LBS. 31.00-37.00
THIS REPORT PREPARED BY THE SPRINGFIELD IL. OFFICE OF THE USDA LIVESTOCK AND GRAIN MARKET NEWS SERVICE--217-782-4925 CJC 1030E

North Jersey Market

Hackettstown, N.J.
Report Supplied by Auction
Tuesday, March 7, 1995
Hay-Straw & Grain Report
ALFALFA: 6 LOTS, 1.80-3.20 BALE. MIXED HAY: 24 LOTS, 1.00-2.80 BALE. TIMOTHY: 4 LOTS, 1.50-3.00 BALE. CLOVER: 1 LOT AT 2.20 BALE. GRASS: 7 LOTS, 1.30-2.40 BALE. WHEAT STRAW: 7 LOTS, 1.70-1.90 BALE. OAT STRAW: 2 LOTS, 1.70 BALE. SHELLED CORN: 4 BAGS, 3.00-6.25 BAG. CRACKED CORN: 1 BAG AT 4.50. OATS: 3 BAGS, 4.50-5.50 BAG. CORN SCREENINGS: 1 BAG AT 7.50. 60 LOTS.

Diffenbach Auction Center

New Holland, Pa.
Monday, March 6, 1995
Report Supplied by Auction
TOTAL LOADS: 164.
ALFALFA: 51.00-150.00.
MIXED HAY: 50.00-157.00.
TIMOTHY: 55.00-135.00.
ORCHARD GRASS: 80.00-120.00.
STRAW: 65.00-180.00.
EAR CORN: 76.00-80.00.
SOYBEAN STUBBLE: 50.00.
OATS: 1.75-2.00.
FIREWOOD: 50.00.

Greencastle Livestock Market

March 2 and 6
Hay & Straw
Report Supplied by Auction
69 LOADS.
ALFALFA: 85.00-111.00.
TIMOTHY HAY: 70.00-98.00.
MIXED HAY: 60.00-86.00.
ORCHARD GRASS: 55.00-85.00.
BROME GRASS: 57.00-80.00.
MULCH HAY: 35.00-48.00.
STRAW: 60.00-87.00.

Vintage Hay

Paradise, PA
Thurs., March 9, 1995
Report Supplied by Auction
ALFALFA: 50.00-101.00.
GRASS: 79.00-95.00.
MIXED HAY: 56.00-90.00.
STRAW: 87.50-107.50.
TOTAL: 22 LOADS.
SALE TIME 1 P.M.

Good's Hay

Leola, Pa.
Wed., March 8, 1995
Report Supplied by Auction
TOTAL LOADS: 70.
MIXED HAY: 60.00-147.00.
ALFALFA: 60.00-145.00.
STRAW: 72.00-137.00.
CORN: 81.00-82.00.
GRASS: 65.00-115.00.
TIMOTHY: 72.00-77.00.
OATS: 1.70-1.80 BU.

Regional Hay

March 6, 1995
Eastern, Pa.
HAY & STRAW MARKET FOR EASTERN PA. (ALL HAY NO. 2 AND BETTER. PRICES PAID BY DEALERS AT THE FARM & PER TON). HAY STEADY TO 10.00 LOWER, STRAW STEADY. ALFALFA 60.00-110.00; MIXED HAY 65.00-105.00; TIMOTHY 60.00-90.00, STRAW 70.00-100.00; MULCH 25.00-50.00.

SUMMARY OF LANCASTER CO. HAY AUCTIONS FOR WEEK ENDING 3/3/95. PRICES PER TON: LOADS 296 HAY, 66 STRAW & 25 EAR CORN. ALFALFA 60.00-140.00; MIXED HAY 52.00-142.00, TIMOTHY 60.00-130.00; STRAW 72.00-140.00, EAR CORN 75.00-87.00.

SUMMARY OF CENTRAL PA. HAY AUCTIONS FOR WEEK ENDING 3/3/95. PRICES PER TON: LOADS: 232 HAY, 46 STRAW & 26 EAR CORN. ALFALFA 50.00-102.00; MIXED HAY 50.00-98.00; TIMOTHY 55.00-98.00; STRAW 50.00-105.00; EAR CORN 55.00-77.50.

Frederick Co. Hay

Buckeystown, Md.
Thursday, March 9, 1995
Report Supplied by Auction
21 LOADS.
ALFALFA: 5 LOADS, 60.00-85.00, 1 BY THE BALE AT 1.00.
ALFALFA MIX: 3 LOADS, 60.00-95.00.
ALFALFA HAYLAGE: 30.00.
TIMOTHY: 2 LOADS FAIR, 60.00 AND 72.00, 2 LOADS GOOD AT 100.00-122.00.
MIXED HAY: 2 LOADS, 67.00 AND 65.00, 3 ROUND BALES 13.00-14.00 BALE.
STRAW: 2 LOADS, 1.00 AND 1.55 BALE.



Carlisle Livestock Market, Inc.

FED CATTLE SALE
- 2nd Tuesday of every month -
Tues. Mar. 14th 7 PM

Note: We have lined up a solid list of cattle buyers who have guaranteed that they will support these sales.
Exit 12 off I-81 - Turn South-Then Left onto Alexander Spring Road
For more information contact
Jim DeGaetano Market (717) 249-4511
Home (717) 249-2359

PENNFIELD GRAIN BANK

Pennfield Offers A Sound Program For The Dairy Farmer To Use His Grain "Same As Cash" To Reduce His Monthly Feed Bill And To Avoid Having To Take "Harvest Price" For His Grain

Prices Week Of 3/13/95
Corn \$2.75 Bu.
Soybeans \$5.75 Bu.
Barley \$2.06 Bu.

- No Storage Charges
- Prices Updated Weekly
- Grain Bank Balance Shown On Each Invoice
- No Hidden Charges

For every ton of qualifying dairy feed purchased you will receive one ton of grain back hauled at no charge

INDEX

Five Sections

FEATURES	COLUMNS
MD Holstein Breeders..... A22	Now is the Time..... A10
Rich Memories..... B 2	Taking Time..... B 4
Glennon's Goats..... B12	On Being A Farm Wife..... B 5
Wool Grower's..... B12	Consuming Thoughts..... B 7
Amish Cooking..... B16	Ida's Notebook..... B 9
	Pseudorabies Update..... B27
	Beef Briefs..... C 3
	Poultry Pointers..... E 2
DAIRY	
Dairy Days II..... A28	
DHIA Focus..... A32	
Lanc. DHIA..... B23, C-7, D 2	
Crawford DHIA B24, D 2, A35	
Chester Milk Lines..... B25	
Wayne DHIA..... B26	
Dairy Distinction Appl..... D 3	
HOME AND YOUTH	DEPARTMENTS
Homestead Notes..... B 2	Editorial..... A10
Home On The Range..... B 6	Farm Calendar..... A10
Cook's Question Corner..... B 8	Farm Forum..... A10
Kid's Korner..... B10	Futures..... A16
You Ask, You Answer..... B15	Business News..... C 6
Farm Women Societies..... B19	Classified Ads..... C 7, D 3
4-H Happenings..... B21	Mailbox Markets..... E 3
FFA Happenings..... B22	Sale Reports..... E 8
	Public Auction Register..... E10

FEEDER CATTLE
Tuesday, March 14 & 28
7:30 P.M.
Bring a Load - Buy a Load
CARLISLE
Livestock Market, Inc.
Turn South off I-81 at Exit 12
(717) 249-4511 or
evenings, Jim 249-2359

Walter M. Dunlap and Sons offers all cattle feeders two marketing days. Give us a call for advice and marketing conditions.

MONDAYS OR WEDNESDAYS

Consign With Us - For The Marketing Edge

Next Feeder Cattle Sale
Wednesday, March 15 - 11:00 A.M.

Walter M. Dunlap and Sons
Lancaster Stockyards
Tel: (717) 397-5136

An Old Line Custom Farm Keeping Ahead With The Times