

FISHER PUBLIC AUCTION

We will be selling from the home of Mr. & Mrs. Elmer Fisher. Located 5 miles North of Rt. 15 at the light in Allenwood, Pa. on Rt. 44. Watch for signs.

March 25, 1995

Starting at 10:00 AM Sharp

**FARMALL H. TRACTOR • LUMBER
COLLECTIBLES • 9 SHEEP
BUILDING SUPPLIES**

Watch for full listing in upcoming
Lancaster Farming 3-18-95

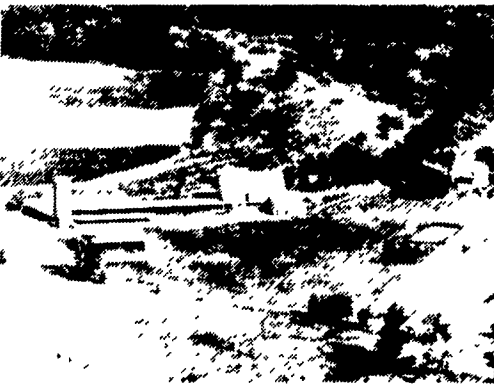


Michael P. Weaver
Auctioneer AU 2180L
Watson, Pa 17777
538-2227

JUNIATA COUNTY DAIRY FARM, WOODLAND AND MODERN FARM MACHINERY AT PUBLIC AUCTION

Sat., APRIL 1

**Real Estate 1:00 P.M.
Farm Related Items and Machinery
- starting at 10 A.M.**



From Hbg. take Rt 322 west approx. 45 mi to the Millfintown Exit. Turn right on Rt 35 north, approx. 1/4 mi to the Industrial Park Road. Go 1 mi, turn left on the Cedar Spring Road and follow to sale site.

This approx. 160 acre farm, located in Walker Twp., Juniata Co., is just perfect for the beef or dairy farmer. Approx 100 acres tillable, balance pasture and woodland, w/some marketable timber.

A 40' x 80' bank barn w/attached 40' x 170' loafing area, Double 8 Herring Bone milking parlor, milk house w/office & 1 bedrm apartment, 20' x 50' silo, trench silo w/concrete bottom & a 40' x 80' metal pole building. A 2 sty., wood frame, 4 bedrm farm house and a 2 car garage 80 additional, tillable acres w/house and barn, available for rent.

WOODLAND and FARM WILL BE OFFERED SEPARATE W/NEW SURVEY, COMPLETED BY SALE DAY. IF YOU ARE LOOKING FOR A FARM W/ENDLESS AGRICULTURAL AND DEVELOPMENT POTENTIAL, DON'T MISS THIS ONE.

SHOW DATES: March 4th and 11th from 10 a.m. to 2 p.m. or Ph. 717-436-2058 for an appt.

TERMS are 10% down at time of sale, bal. in approx. 120 days, other terms at sale. No out of state checks.

PRE-ARRANGED, OWNER FINANCING - TO QUALIFIED BUYERS, IS ALSO AVAILABLE.

CHET L. ADAMS, Owner
Harold E. Powell, Jr. Atty.

Long's Auction Service
Ph. 717-527-2405 or 4458
Fax 717-527-2941
AU001702L

**LUNCH STAND
NOT RESPONSIBLE FOR ACCIDENTS**

PUBLIC AUCTION VALUABLE REAL ESTATE 4 BDRM. BRICK HOUSE BARN/SHOP EARL TWP. - VOGANVILLE THURS., MARCH 23, 1995 Auction Time 4 P.M.



LOCATION: 583 Voganville Rd. (Voganville). Take Rt. 322 East of Hinkletown turn right onto Railroad Ave. at (Ephrata Bank Branch). Turn right onto Linden Grove Rd. to Voganville. Turn left onto Voganville Rd. to property on left. Earl Twp., Lanc. County.

Real Estate consists of spacious 2 1/2 story all brick home w/1st floor eat-in kitchen, living & family rm., 1/2 bath & laundry. 2nd floor has 4 bedrms. & full bath. Full basement & attic storage, oil hot water heat system, frame barn/shop 3 story bldg. w/horse stall, 2-car garage & shop area. Lot size 66'x221'. For details plot plan, etc. Call auctioneers at 717-445-4309 or 717-733-1008. Inspection by appointment or open house on Sats., March 11 & 18 from 1-4 P.M.

Terms by

IVAN Z. & ELLA MAE NOLT

Auction conducted by Randal Kline, Lloyd Kreider Roy Good, Jr., Auctioneers AU2116L 717-445-4309



Public Auction Register

Closing Date Monday 5:00 P.M. of each week's publication

SAT. APR. 15 - 9AM 1 1/2 story brick dwelling, real estate, antiques, household goods, woodworking tools. 75 E. Farmersville rd., West Earl Twp, Lanc. Co. Pa. By Esther White. Horst Aucts.

SAT. APR. 15 - 9:30AM Cohocton (Steuben Co.) NY. Pirrung's Annual Spring Consignment Auction of Farm related equip., contractor tools and light construction items. Pirrung Aucts., Inc. 716-728-2520.

SAT. APR. 15 - 11AM Showburst II consignments now being taken, 50 registered show age heifers, at our farm 3 miles E of Muncy, Pa. along Kepner Hill Rd. (Lyc. Co.) By Fraley Auction Co.

SAT. APR. 15 - Noon, Apple Blossom 1995 55 lots cow/calf pairs, bred heifers, show heifers. Glenara Farm, Marshall, Va Kelly Schaff, St., auct.

MON. APR. 17 - 4PM, 2 1/2 Story Aluminum Sided Dwelling, Household Goods, Collectibles, Guns & Car. Located At 364 Spring Grove Rd., East Earl Township, Lanc. Co., Pa. (Directions: Rt. 625 South Of Bowmansville,

Turn East Onto Union Grove Rd., Turn Right Onto Spring Grove Rd. To Property On Left.) Sale For, Vicky L. Hurst & Douglas I. Hurst. Horst Aucts

MON. APR. 17- 4:30PM Powr tools, lots of hand tools, hardware, revolver. Held at the Lisburn Fire Co. Pavilion, Lisburn, Pa. On I-83 N. or S. use exit 18, take Rt. 114 W for 5 miles. Marion E. Capp, owner. Little Ike Eichelberger, auct.

TUES. APR. 18 - Pearl Arndt Estate, Ickesburg, PA. Farm - Real Estate - 100 Acres. Sale Managed by Kling's Auctions, Inc., Landisburg, Pa. 17040 717-789-3883.

WED. APR. 19 - 4 30PM Fremont Fire Dept. social hall, (Mt. Pleasant Mills, Pa) selling lawn equip, 3 wheeler, 100+ quality old toys, antiques and collectibles. Hassinger/Courtney aucts

WED. APR 19 & THURS APR. 20 - Large Two Day Sale of Farm Equipment, Etc. Located 6 Miles South Of Chambersburg, Pa One Mile East of Marion along Rt. 914, 1/4 East Off Rte 81, Exit 4. Owners, Jerrold

& Gloria Oaks. Marion Auction Service.

THURS. EVENING APR. 20 - 5:30PM 7 Prime Building Lots, Soil Tests Complete. West Perry Township Snyder County (Heister Valley Rd.) Hassinger/Courtney Auctioneers.

THURS. APR. 20 - 10AM Easter Lamb Sale. New Holland Sales Stables, 101 W. Fulton St., New Holland, Pa

THURS. APR. 20 - 4PM Real estate. Loc: take Rt. 322 E. of Hinkletown turn R. onto Railroad Ave at Ephrata National Bank branch Turn R onto Linden Grove Rd to Voganville, turn R. onto Wissler Rd 322 Wissler Rd Terms Joseph M & Heidi Stauffer Kline, Kreider & Good aucts.

FRI. APR. 21 - 4-H Project Feeder Pig Auction for White Oak Mills/Pro Genetics. Manheim Farm Show Bldg. Manheim John D Stauffer, auct.

FRI. APR. 21 - 9AM Real estate, personal property. Take Rt. 272 S. of the Buck, Pa. app. 7 mi. to property on right. By Isabel D. Tollinger Kreider, Kline & Good aucts.

FRI. APR. 21 - 12.30PM 29 Acres on the Edge of Parkesburg Boro. Located in Sadsbury Township, Chester Co, PA Onwer Albert Coy Petersheim Auctioneers

BIG VEG. & FRUIT FARM EQUIP. AUCTION

8 Tractors - Trailers - Sprayers - Packing House - Plant - Till - Irrig - Equip.

Sat. March 18, 1995 at 10 A.M.!

For Anthony DiMeglio Jr.

Held at the Garden State Packing Co. facilities, Rt. 30 - Elm, N.J. 4 mi. West of Rt. 206 - Hammonton, N.J. 25 mi. East of Phila. Pa. From North or South use N.J. Turnpike or Rt. 295 and exit on to 73-So. to Rt. 30 East to Sale Site. Site phone 9 to 4 P.M. - 609-561-2070. Due to other business interests the DiMeglio's are discontinuing their Veg. operation. Equip. kept undercover, many items recently new or kept like new!

10 A.M. - Misc. Items - Various lots of Veg. related containers, trays, scales, hand tools and related items. Alum. Irrig. - valves - elbows - related fittings, lots of pallets w/cult. and farm parts. 30 assorted wood orchard ladders, Deutz eng. parts, Bunkhouse supplies, Porta John Toilets, plus lots more!

Packing House Equip. - A-1 line equip. - top condition. Hyd. bin dumper, Durand Wyland receiving water tank w/36" conveyor and trash eliminator, Powell 11'x30" washer, Lobee 8'x24" waxer w/heat lamps. Powell 8'x30" roller conveyor, Powell 24'x30" double belt sorting conveyor, Powell 6 hole Veg. or Fruit wheel sizing unit table, FMC-60'x30" 2-way belt conveyor table. 2-Bostich gold belt floor stand stapler's, 2-NJ wire stitcher's, Apple Baggers - 2FMC semi auto and 3 hand baggers. Various power and non power conveyors, plus other related items!

Irrigation Equip. - Ag Rain #3571 Reel Traveler and Ag Rain #41A Reel Traveler - Both w/4"x1250' hard hoses & guns. Berkly portable pump - powered by Deutz 6 cyl. turbo DL. Various Drip Irrig. systems and related filters - 4"x20' PVC pipe, IND Sump Pump, Yardney double sand filtration system w/auto valves.

Greenhouses - 2-22'x96' Hut type w/fans - heaters - benches.

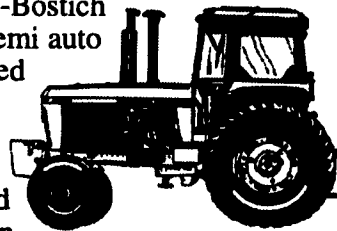
Tractors - Trailers - Fork lift - 2-John Deere #4240's - DL-fully loaded-cab -1 w/QR-1w/P. Shift-both super sharp. Case IHC #5120 - DL-cab-loaded-850 hrs-like new, MF #231-DL-Sharp, 2-IHC #504's, cult. and wide front for 504, MF-B414 orchard, Farmalls 230 and Super C-cult's. * 2 Great Dame Trailers - 1981-44' SS body-sliding tandem-dd rear-side doors w/Transcold refer unit-DL, 1967-40'-SS body-tandem-dd rear side doors, 67-IHC #C4000-DL-Twin screw tractor, 85-Ford #150 pickup w/cap-V8 auto.**

Forklift - Clark #C500-2500 lb. cap-14' 3 stage lift-side shifter-propane.

Veg. Planters- Mechanical 3 PT-2R transplanter w/press wheel drive-like new, Kenco 3 PT planter w/water wheel - 1 or 2 row hds, Kenco 3 Pt. High Speed Plastic Layer, Kenco 3 PT bedder w/fert. & hyd. markers-like new, Kelly 3 PT-2R bedder w/sub soiler for bear ground, IHC #900-2R plate planter-like new.

Sprayers - Cropliner #2000 PTO w/orchard and row crop hds. MFC-500 gal. row crop w/60' hyd. booms w/sweet corn high-lift attach, Hardi 300 gal. sprayer w/28' booms, FMC-100 gal. Myers 150 gal. 3 PT weed sprayers, 1000 gal. Nurse tank on trailer, 12' Easy Flo and Lilly spinner fert. spdr's 2-2250 gal. poly liq. fert. storage tanks, Various Poly nurse tanks.

Tillage - JD #2500-4 btm.x18" auto reset plow, 3 PT Taylorway 3 shank sub soiler, Ford 3PT-3 btm. plow, MF-12' hyd. disc. Misc. Equip. - NI #3632 tandem manure spdr. w/hyd. gate-like new, Danuser 3 PT digger-tree auger, MF - 3 pt. sickle mower, 2-14' flat wagons, 4 bin carry trailer.



AUCTIONEERS NOTE - This Sale offers the finest quality of equipment that we have sold in the past 5 years.

Sale Order - We will sell in order as listed above.

Inspection - 1 week prior - 10 A.M. to 4 P.M.

Terms - Out of State Buyers - Cash or Guaranteed Funds or Current Bank Letter of Guarantee w/Amt. you can spend up to on the Anthony DiMeglio Jr. Auction - addressed to the Same.

Blizzard Date 3/20/95. Sale Ph. 9 to 4 P.M. 609-561-2070.

SALE CONDUCTED BY: Col. Fred R. Daniel Auctioneers Inc. Neshanic Sta., N.J. 908-369-4784.