

Chislom Rider Bean Harvester
2 Row 340 IH Excellent Condition
\$3,500
Call Evenings after 6 PM
(908)946-8876

MARCH SPECIAL

Farnsworth Farm Supply

103 Cementary Street • Hughesville, PA 17737

717-584-2106

New Equipment

| | |
|-------------------------------|----------|
| Ford 3930 Tractor | \$18,900 |
| Ford 5030 Tractor | \$18,900 |
| Ford 7740 Tractor | \$39,330 |
| NH 565 Baler | \$8,700 |
| NH 570 Baler | \$9,175 |
| NH #72 Thrower | \$3,075 |
| NH 630 Round Baler | \$9,100 |
| NH 640 Silage Baler | \$13,200 |
| NH 650 Round Baler, Auto Wrap | \$12,800 |
| NH 451 Mower | \$2,700 |
| NH 472 Haybine | \$7,420 |
| NH 492 Haybine | \$8,700 |
| NH 254 Tedder Rake | \$3,650 |
| NH 157 Tedder | \$1,750 |
| NH 163 Tedder | \$3,250 |
| NH 169 Tedder | \$5,200 |
| NH 256 Rake | \$2,700 |
| NH 166 Windrow Inverter | \$3,600 |
| NH 132 Bale Carrier | \$900 |
| NH 38 Crop Chopper | \$6,250 |
| NH 28 Blower | \$3,400 |
| NH 40 Blower | \$3,800 |
| NH 60 Blower | \$4,050 |
| NH 306 Manure Spreader | \$8,225 |
| NH 190 Manure Spreader | \$6,300 |
| NH 165 Manure Spreader | \$5,675 |
| NH 185 Manure Spreader | \$6,790 |
| NH 355 Grinder Mixer w/Scales | \$10,500 |
| NH 358 Grinder Mixer w/Scales | \$12,750 |
| NH 816 Forage Box | \$6,200 |
| NH 716 Snow Blower, 5' | \$1,700 |
| NH L=565 Skid Steer Loader | \$16,250 |

PA Sales Tax to Be Added To All Applicable Items. These Items Are Cash & Carry

HARLEY RAKE

6 Ft 3 Point Hitch, Hydraulic Drive
With PTO Pump, 2-Tail Wheels.

Like New \$4100.00

CALL:

RINGO HILL FARMS EQUIPMENT CO., INC.
1624 RT. 212, QUAKERTOWN, PA 18951
PHONE (610) 346-7340

Attention Haymakers

Dan Sprung Fabrication is a small farm shop specializing in custom made bale handling equipment, from small rectangular bales up to the big 1 ton square bales. Call us for a free video of our new van trailer loader as well as our conventional tractor loader models.

716-768-8582

DEERFIELD

Ag & Turf Center, Inc.
Watsonstown Exit of I-180



Watsonstown, PA
717-538-3557
1-800-553-3370

Special Price Demo Equipment

JD 1518 Rotary Cutter
JD 6100 MFWD Tractor

USED COMPACTS

JD 600 Tractor
JD 600 Loader

COMBINE CLEARANCE

| | |
|-------------------------------|----------|
| NH 166 Windrow Inverter | \$3,600 |
| NH 132 Bale Carrier | \$900 |
| NH 38 Crop Chopper | \$6,250 |
| NH 28 Blower | \$3,400 |
| NH 40 Blower | \$3,800 |
| NH 60 Blower | \$4,050 |
| NH 306 Manure Spreader | \$8,225 |
| NH 190 Manure Spreader | \$6,300 |
| NH 165 Manure Spreader | \$5,675 |
| NH 185 Manure Spreader | \$6,790 |
| NH 355 Grinder Mixer w/Scales | \$10,500 |
| NH 358 Grinder Mixer w/Scales | \$12,750 |
| NH 816 Forage Box | \$6,200 |
| NH 716 Snow Blower, 5' | \$1,700 |
| NH L=565 Skid Steer Loader | \$16,250 |

GRAIN DRILLS

| | |
|----------------|---------|
| JD 600 Tractor | \$3,600 |
| JD 600 Loader | \$2,700 |
| JD 600 Tractor | \$3,600 |
| JD 600 Loader | \$2,700 |
| JD 600 Tractor | \$3,600 |
| JD 600 Loader | \$2,700 |

TRACTORS

| | |
|-------------------|----------|
| Ford 3930 Tractor | \$18,900 |
| Ford 5030 Tractor | \$18,900 |
| Ford 7740 Tractor | \$39,330 |

HAY EQUIPMENT

| | |
|-------------------------|---------|
| NH 472 Haybine | \$7,420 |
| NH 492 Haybine | \$8,700 |
| NH 254 Tedder Rake | \$3,650 |
| NH 157 Tedder | \$1,750 |
| NH 163 Tedder | \$3,250 |
| NH 169 Tedder | \$5,200 |
| NH 256 Rake | \$2,700 |
| NH 166 Windrow Inverter | \$3,600 |

FORAGE HARVESTERS

| | |
|------------------------|---------|
| NH 816 Forage Box | \$6,200 |
| NH 716 Snow Blower, 5' | \$1,700 |

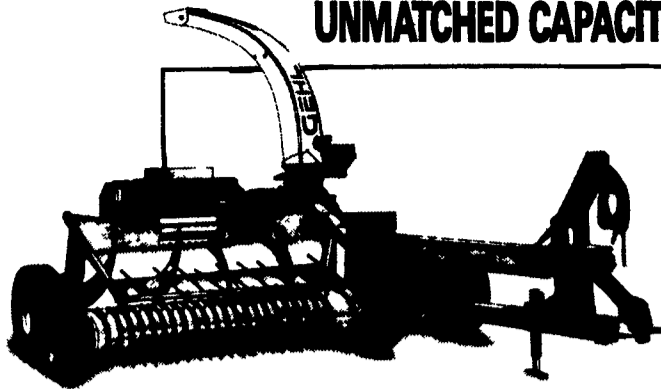
TILLAGE EQUIP.

| | |
|-----------------------|----------|
| JD 1518 Rotary Cutter | \$3,600 |
| JD 6100 MFWD Tractor | \$12,800 |
| JD 600 Tractor | \$3,600 |
| JD 600 Loader | \$2,700 |
| JD 600 Tractor | \$3,600 |
| JD 600 Loader | \$2,700 |

Starcraft 21' inboard-outboard
w/trailer.....\$2,700



UNMATCHED CAPACITY



... With Gehl's forage harvesters.

- Exclusive Auto-Max Load-Sensing System – Increase capacity by up to 20% without the fear of overloading.
- Metal-Stop Metal Detector – Prevents machine damage.
- In-Head Hydraulic Knife Sharpener.
- Patented One-Sided Cutterbar Adjustment.
- Three Models To Choose From.

Gehl Models 860 & 1065 Forage Harvesters

GEHL FINANCE OFFERS:
Cash Discounts, 2% Low APR Financing
or Waiver till July 1, 1995
Call For Details



The Force Behind Farming



Lebanon Valley Implement Co., Inc.

700 E. Linden Street, Richland, PA 17087
717-866-7518

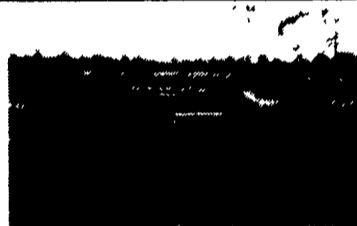
AG INDUSTRIAL INC.

Route 1 on MD PA LINE

410-658-5568 800-442-5043



Ford 7840 4WD Tractor
New Rubber, Dual Power, 1993
Real Nice



N.H. 489 Haybine
4 years Old, Good Rolls,
Had A Good Home

TRACTORS & LOADERS

- Int. 684 w/2250 Loader
- Ford 555A TLB
- Ford 340 Tractor Loader
- Ford 345 C Trac w/Box Blade
- Ford 601 Trac w/Triumph Sickle Bar, 34HP
- Ford 1715 Compact Trac, 27 HP
- Ford 5000 60 HP Trac.
- Ford 5610 82 HP Trac.
- Ford 7610 Trac
- Ford 7710, 4WD, Cab & Air
- Ford 6610 4WD w/Loader, 72 HP
- (2) Kubota G5200, 14 HP
- Kubota L345 DT, w/Loader, 34 HP
- JCB 3CX Trac/Ldr. Bckhoe
- Case 411B Trac, 37 HP
- Case W18 Loader
- AC 6080 Tractor, 83 HP
- Ford 1210 Tractor, 16 HP
- Ford 7840 4WD, 90 HP
- Case 530, 37 HP
- Ford 4000, 50 HP
- NH 781 Skid Steer Loader
- Ford 4400 Tractor Loader
- Ford 601-Sharp, 34 HP
- Ford 801 w/Front Blade, 41 HP
- Ford 3910 w/Allied Loader, 42 HP
- Ford 6610 II, 72 HP
- JD 310B T-L-B w/Cab
- Cub Cadet 1105 Lawn Tractor
- Oliver 550 Tractor w/loader
- IH 886 Tractor, 86 HP
- Ford 455 TLB, 4WD, Cab, ext. hoe
- Hesston 1180 2WD Tractor w/loader

HAY & FORAGE

- NH 254 Rake, Tedder
- Hesston 10' Hydro Swing
- NI 279 Cuditioner
- (2) NH 320 Baler w/58 Th
- NH 325 Baler
- NH 355 Grinder Mixer



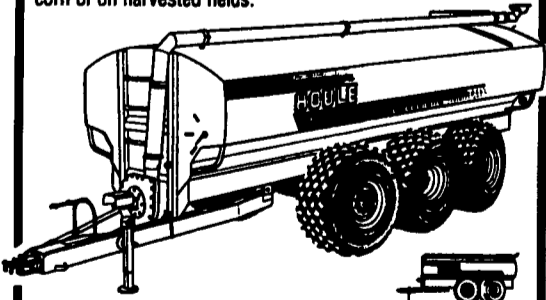
Clean NH 411 Disc Mower
Conditioner
1000 RPM, Hydraulic Header Tilt



JD 310 T-L-B
1983 2 WD w/Cab, 1450 Hours

LIQUID MANURE SPREADER

WITH FLATION TIRES TO MINIMIZE SOIL COMPACTION
Available with complete line of spreading tool bars and precise flow control to spread manure the ecological way eliminating spray drift and reducing odors. Our tool bars are designed to apply hog or dairy manure on growing fields, between rows of corn or on harvested fields.



4-6 OR 8 WHEEL SPREADERS WITH POWER STEERING - 3000 TO 9000 US GAL.

SPREADERS WITH SINGLE AXLE OR TANDERS - 2250 TO 6000 US GAL.

• "V" shape bottom for more complete clean out.

• Standard exterior finish: epoxy primer and urethane paint.

• Low profile tank for maximum visibility and stability.



SPREADER TANK RENTALS AVAILABLE

"We're Here To Serve You"

SNOOK'S EQUIPMENT

RD 3, Box 130, Mifflinburg, PA 17844

717-966-2736

Ask For Ernest Or Dean