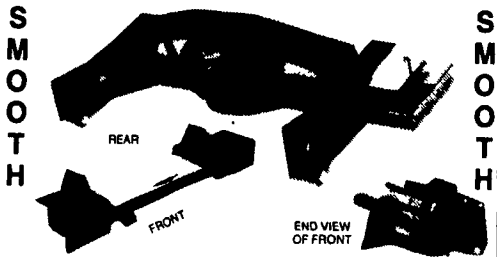


KELDERMAN AIR RIDE



Adding a Kelderman Air Ride Conversion system to your present suspension will result in a two stage suspension system. This is not to be confused with adding an Air bag mounted above the axle. Allows adding extra spring leaves to increase load rating and still maintain Air-Ride comfort.

The bolt on basic package utilizes an air stem mounted in a convenient location to add or remove air from the system

Optional 12 volt compressor allows changing air pressure setting on the go. Currently available for front and rear suspension in Dodge Series 250 & 350 trucks. Available soon for Dodge Dakota models.

Also available for some Ford, Chevy and GMC truck models. Special orders available for most motor homes. This option will smooth out the ride on those rough-road fishing/campin, trips.

AIR RIDES IN STOCK

ARDF	Air Ride Dodge Front (4WD)	\$550.00
ARDR1	Air Ride Dodge Rear (one-bag)	\$550.00
ARDR2	Air Ride Dodge Rear (two-bag)	\$650.00
ARCK	Air Ride Compressor Kit	\$275.00
ARCK-C	Air Ride Compressor Kit - Comput-A-Ride	\$350.00
ARFR1	Air Ride Ford Rear (one-bag)	\$550.00
ARFR2	Air Ride Ford Rear (two-bag)	\$650.00
ARCR2	Air Ride Chevy Rear (two-bag)	\$650.00
	Installation Fee (pickups) -	\$200.00/axle
	Installation Fee (Compressor Kit)	\$50.00
	Installation Fee (Comput-A-Ride)	\$100.00

TRUCK HITCHES

Ford, Chevy, Dodge 1/2, 3/4, 1 Ton Pickup Hitches
RH7300 Class 4 Hitch 7500 Lbs. Dead Weight
10,000 Lbs. Load Weight Distributing Hitch

All Sport Utility Vehicle Hitches Specially Priced
Load Weight Distributing Hitch - Adjustable Hitch
For RV's, Flat Beds, Stock Trailer, Horse Trailers

Sway Controls - For Control Of Sway Caused By Passing Truck & Wind Gusts

BINKLEY & HURST BROS. INC.

133 Rothsville Station Rd.
Lititz, PA 17543
(717) 626-4705
Fax 717-626-0996



Butler truck scales, 8'x10' electronic axle scales, \$1200. 814-848-9753.

Chip Vans For Sale: 40' vans complete w/air intake vents, radial tires, inspected & ready to go, \$2500/each. 717/436-5454.

FOR SALE: Heavy duty lift axle, mounting and air control accessories included, \$2000 OBO. 717-626-5591.

Ford Tri-Axle 16' Aluminum Dump Bed, 6V, 71 Detroit, 4X4 Spicer, 73280 GVW, (814)422-8984 7-10PM.

Cedar Valley Auto Sales

Rt. 422, West of Lebanon, PA
717-273-1372



92 CHEV. K 1500 Silverado, 350 V8, AT, AC, PS, PB, PL, PW, Tilt, Cruise 32,000 MI



88 FORD CLUB WAGON 5.8 V8, 8 Pass., AT, AC, PB, PL, PW, Tilt, Cruise, 72,000 MI



87 FORD BRONCO 2.9 V6, AT, AC, PS, PB, 70,000 mi Special \$6,900



88 CHEV. S-10 4X4 Ext Cab, 4.3 V6, AT, PS, PB, 63,000 mi Special \$8,350



1978 IH 28000 GVW, Hyd. Brakes, 345 Gas, with 16' Flatbed Dump, Road Ready \$5,000

Also: 1971 IH 16' Flatbed Dump \$3,000
1963 IH 16' Flatbed Dump \$3,000
717-838-8222

TIRONIE TARPS

USA TARP STRAPS - 100 for \$46**

2"x27' HD RATCHET ASSEMBLIES NOW...\$18**

SHOP AROUND - THEN CALL



1-800-874-2928

FAX: (717) 844-3127



MACK 6x6 TRUCKS

Cummins V8 Diesel Jake and full Air Brakes P.S. 1400/24 Tires Double Frame Rear Drag Winch (50,000 lbs.). Differential Locks. (60 Tons) Hauling Capacity. Like New Only 800-17,000 Miles. A must for every Farmer.

\$12,500 to \$15,500
(814) 834-1018 St. Marys, PA

WOODCREST WMOTORS

Rt. 272, South of Reamstown Traffic Light
717-336-3131



91 GMC Sierra 1500 SLE V6, AT, AC, Cass., Bedliner, 40,000 MI \$8,450



92 Ford Aerostar Extended XLT, 4.0 V6 7 Pass., Loaded, 49,000 Miles \$11,900



92 Plymouth Grand Voyager 7 Pass., AT, AC, 30,000 Miles \$11,900



87 Chevy S-10 Blazer V6, 4x4 Tahoe Loaded, 64,000 Miles \$8,400

SPECIALIZING IN MINI VANS

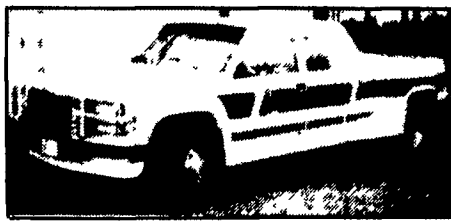
CENTRAL PA'S LARGEST GM DEALER



'95 CHEVROLET FULL SIZE CARGO VANS 3 in Stock

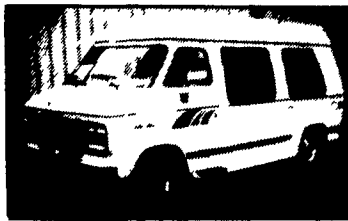


'95 3500 SERIES CHEVROLET Cab & Chassis of Utility Body

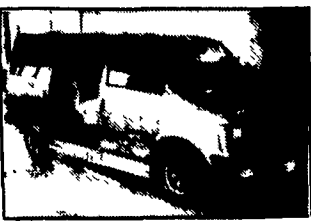


'95 CHEVROLET 3500 XTD CAB Dually, 4x4 (Centurian Conversion)

OVER 200 NEW & USED TRUCKS IN STOCK



CHEVROLET CONVERSION VANS
• Midway • Roman Wheel
• Trade Winds • Country Coach
35 In Stock



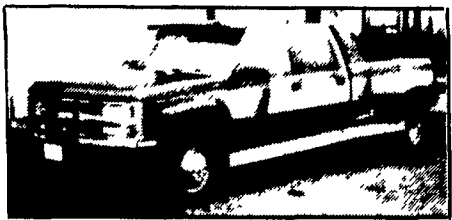
'94 CHEVROLET AWD Astro, Extended Length (Leftover)



'94 DODGE RAM 1500, Loaded



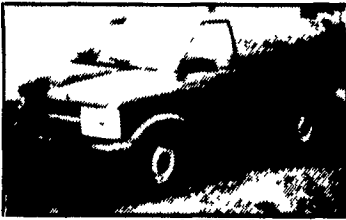
'95 CHEVROLET 1/2 TON Extend Cab, 4x4 Cheyenne Package



'94 CHEVROLET 3500 CREW CAB Dually, 4x4 (Centurian Conversion), Diesel & Gas 10 in Stock



'95 BLAZERS IN STOCK 2 Door and 4 Door



'95 ASTRO CARGO'S Auto, V-6 3 in Stock



'93 GRUMAN STEP VAN silver

If We Don't Have It, We'll Get It!

Frederick
The SUPERMARKET OF TRUCKS
(717) 274-1461 • (800) 222-5523

1505 Quentin Road, Rt. 72 (South) Lebanon, PA

• BILL MORTENSEN • BRYON BERNHARD • JACK BREAM • BILL BREAUULT • BARB KEEFER