

Get Ready For Spring Gardening At Longwood Gardens

KENNETT SQUARE, (Chester Co.) — Throughout March, the gardeners at Longwood Gardens are sharing trade secrets during special demonstrations, talks, and walks. These timely offerings are part of daily visitor programs included with admission (except the Fun Day performance on March 18).

Longwood's popular demon-

strations provide how-to information on gardening and a chance to talk with experts. "Sowing Seeds" on Wednesday, March 15, covers the basics of growing plants from seed. "Pruning Roses" on Wednesday, March 22, offers advice on pruning hybrid tea and floribunda roses. "Pruning Grapes and Raspberries" on Friday, March 24, demonstrates techniques to promote fruit production on young

plants. On Friday, March 31, "Sharpening Pruning Tools" teaches visitors how to properly sharpen hand pruners and loppers. All demonstrations begin at 2 p.m. and last approximately 20 minutes with unlimited time for questions. The slide-illustrated talk "Annuals to Grow from Seed" on Wednesday, March 8, at 2 p.m. is a great chance to relax before the spring rush and learn more about



Children can be gardeners and pot a plant to take home on March 18 during a special Fun Day at Longwood Gardens, Kennett Square. The day also includes specially ticketed performances by the Wilmington Music School early childhood staff, a conservatory-wide plant hunt, and the indoor Children's Garden, which is open throughout the year.

Take Control Of Your Money

LANCASTER (Lancaster Co.) — Penn State Cooperative Extension is offering a free workshop "Taking Control of Your Money" on Thursday, March 16, from 7 p.m. to 9 p.m. and again on Tuesday, March 28 from 1 p.m. to 3

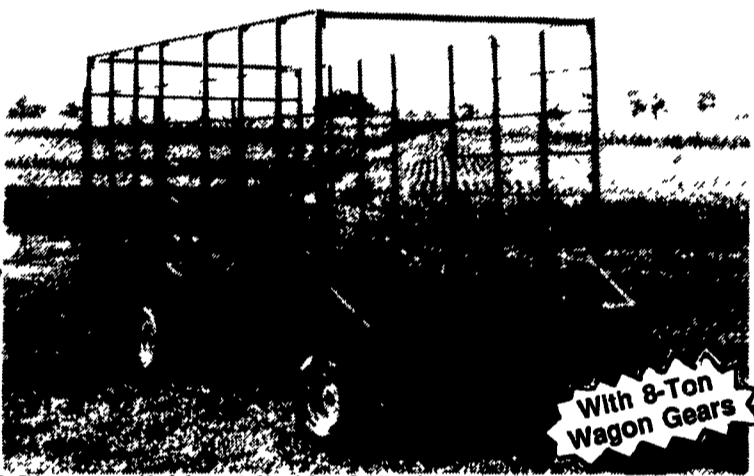
p.m. at the Farm and Home Center in Lancaster. This program is designed to provide basic information on money management, including the basics of budgeting and credit use. The information will help you and your family deal with the dilem-

mas and decisions regarding earning, spending, and saving money. Financial success requires teamwork, so a family needs to talk together about money. Discussions concerning how to spend money, what the family's future needs are, when to use credit, and other issues are as necessary as organizing records themselves. In fact, if your family talks rather than argues about money, you will probably have fewer money problems.

To register or for more information, call Penn State Cooperative Extension at (717) 394-6851 by March 14.

Get MOOVin' with Milkshakes!

STEEL BALE BOXES



With 8-Ton Wagon Gears

3 Sizes Available - 16', 18', 20' with or without running gear
• Also: will fit sides onto your flat wagon

NEW PRODUCTS!

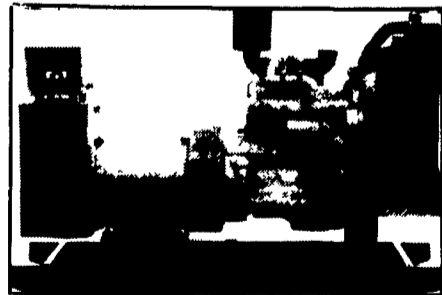
Double Rake Hitch

Farm Gates Made To Your Specifications

MFD BY: **GAP HILL FARM WAGONS**

5549 Lincoln Hwy. - Gap, PA 17527 717-442-9489
Call Bet. 8:30 & 9:00 A.M.

GENERATORS



AUTOMATIC and MANUAL SYSTEMS

DIESEL
L.P. GAS
NAT. GAS
NEW & USED



LEROY SOMER PTO ALTERNATORS

BRUSHLESS INDUSTRIAL GRADE
11 to 60 KW

READY FOR THE NEXT STORM?

For Sales and Service Call The People Who Know Generators

MARTIN ELECTRIC PLANTS

280 Pleasant Valley Rd., Ephrata, PA 17522-8620

Tel: 717-733-7968 Fax: 717-733-1981

QUALITY FROM TOP TO BOTTOM



Whether they're designed for small home gardens or large commercial farms, Kubota diesel tractors vary in size but not in quality.

Each Kubota tractor is designed to run a long time with minimal maintenance.

From the smallest 10 HP models to turbocharged specialty tractors which deliver 91 HP at PTO, Kubota tractors are dependable. Sturdy. Fuel-efficient. Comfortable.

Kubota's quality is world-renowned, from the bottom to the top of our tractor line.



Stop In & See The New Grand "L" Series Kubota Tractors

Kubota.

YOUR FULL LINE KUBOTA PRODUCT HEADQUARTERS
• INVENTORY • PRICE • KNOWLEDGEABLE SALES STAFF
• SERVICE EXPERIENCE

• PARTS
• SALES
• SERVICE

KELLERBROS.
KUBOTA

FINANCING OR CASH DISCOUNTS AVAILABLE

WE SHIP PARTS UPS DAILY

TRACTORS & EQUIPMENT
Serving Central PA Since 1921

CALL FOR DETAILS ON LEASING

LEBANON
1900 S. 2nd St., Lebanon, PA 17046
717-266-2000

STORE HOURS
MONDAY-FRIDAY 7:30-6:00
SATURDAY 7:30-12:00

2 Locations

LANCASTER
1900 Franklin Pk., Lancaster, PA 17601
At Penn 28 & Franklin Pk.
717-266-2800

These gardening programs are part of daily events during Longwood's "Welcome Spring" display of 18 warm indoor gardens overflowing with colorful flowers and plants. In addition to more walks, talks, and demonstrations, there are Sunday afternoon concerts and weekday "Discovery Stations" on topics such as "Insect Adventures" and "Stuffed Topiary." For a complete schedule, send a self-addressed stamped envelope to Schedule, Longwood Gardens, PO Box 501, Kennett Square PA 19348-0501. For recorded information from phones in the mid-Atlantic region (Connecticut to Virginia), call (800) 737-5500, or to speak to a Longwood representative, call (610) 388-1000.

March visitors pay half-price admission because of renovations in two conservatories. Through March 31, admission is \$5 for adults, \$3 for youths ages 16-20, \$1 for children ages 6-14, and free for children under age 6. Beginning April 1, admission is \$8 for adults (\$6 on Tuesdays), \$4 for youths, and \$1 for children. Rates will return to the usual fee of \$10 for adults (\$6 on Tuesdays), \$6 youths, and \$2 children 6-14 when the Orangery and Exhibition Hall reopen.