

Public Auction Register

Closing Date Monday 5:00 P.M.
of each week's publication

THURS. MAR. 9 - 5PM
Kirkwood Auction Center
Grocery Auction. Rich Wilmer, auct.

FRI., MAR. 10 - SAT.,
MAR. 11 & SUN. MAR. 12
Machine Shop, sheet metal
equip. and tooling. At
Brandt Tool & Die 1908
Frederick Pike, Littlestown,
Pa. 2 mi. W. of Littlestown,
Pa. along Rt. 194 in the vil-
lage of Kingsdale. Lee Bixler
owner. Jim Beaver,
auct.

FRI. MAR. 10 - 8:30AM
Located in Centre Co., 1 1/2
miles S. of Rebersburg, Pa.
1/2 mile W. of Smullton. 6
mules, 85 head Holsteins,
machinery and some
household. Sam F. and
Lydia Stoltzfus. Mark Glick,
auct.

FRI. MAR. 10 - 9AM Farm
equip, tractors & farm sup-
plies. A&C Diefenbach Auc-
tion, Inc. 100 W. Jackson
St., New Holland, Pa.

FRI. MAR. 10 - 9:30AM
Fertilizer manu. equip.,
trucks, spreaders, tools,
office equip, real estate. Rt.
26 N. off Rt. 30. Go 1/2 mile
and make a left on W. Ninth
St. Plant is 200 yards on
right. Claycomb and Mis-
hler and Assoc., aucts.

FRI. MAR. 10 - 9:30AM
Mod. farm equip, dozer,
backhoe loader, grain
trucks, milking equip, 1919
antique tractor, antique gas
eng., sleighs. Between
Allentown & Kutztown, one
mile W. of Trexlertown, turn
onto Breinigsville Rd. into
the Village of Breinigsville.
Go 1 mile, at Schroyer's
Funeral Home take Brook-
dale Rd., 1 block to farm,
Lehigh Co. For Clarence
Boyd. Ralph W. Zettlemoyer
Auction Co.

FRI. MAR. 10 - 12Noon,
Real Estate. Northumber-
land Co. Lower Mahanoy
Twp. Along Dairy Rd. 1

mile E. of Dalmatia (Rt.
147) 1/4 mile NE of Hickory
Corners or 1 mile S. of
Mandata turn W. off Rt. 225
onto Dairy Rd. 2 miles to
sale site. Dick A. Witmer,
Keith D. Witmer, Kevin A.
Witmer, owners. Mark J.
Jones, auct.

FRI. MAR. 10 - 1:30PM
State Graded Feeder Pig
Sale. Carlisle Livestock
Market, Inc. Exit 12 off I-81
turn South then left onto
Alexander Spring Rd.,
249-4511.

FRI. MAR. 10 - 4PM Real
estate, Loc. 2166 Hollinger
Rd., Willow St., West Lam-
peter Twp., Lanc. Co., Pa.
By Millwood Crossing Part-
nership. Howard E. Shaub,
Inc., auct.

FRI. MAR. 10 - 6PM Base-
ball Cards. Murry Auction
Emporium, 23 N. Water St.,
Lititz. E.M. Murry Assoc.,
Aucts.

FRI. MAR. 10 & SAT. MAR.
11 - 29th annual Wachter
Consignment Sale. Freder-
ick Fairgrounds, East Pat-
rick St., Frederick, Md.

Industrial and farm equip,
contractors equip, new
tools, etc. Lease & Lease
aucts.

FRI. MAR. 10 & SAT. MAR.
11 - 8:30AM Antique glass-
ware, china, primitives,
lamps, ironware, primitives
& furniture from Mrs. Hilda
J. Schaeffer & Mr. & Mrs.
Frank H. Warner. Held at
50 Durlach Rd. (Corner of
Rt. 322 & Durlach Rd., W.
of Ephrata), Ephrata, Lanc.
Co., Pa. Horst Aucts.

SAT. MAR. 11 - Richfield,
Pa. Juniata Co., JD 4440,
JD 4320, NH 326 Hay Bal-
er, 3 wagon loads of tools &
some antiques, 1 wagon
load of butcher supplies.
717-894-3417.

SAT. MAR. 11 - Wayne
Kuhns, Warm Springs Rd.,
Chambersburg, Pa.
Machinery. Sale Managed
by Kling's Auctions, Inc.,
Landisburg, Pa. 17040.
717-789-3883.

SAT. MAR. 11 - Rt. 70
Marlton, NJ Complete con-
tents of Kitchen showroom,
whirlpools, tubs, sinks,

faucets, GE appliances,
carpet and more. Call
Maryann for details
215-739-1021.

SAT. MAR. 11 - 8:30AM
Antiques, Furniture, Piano,
Appliances, Stair Elevator,
Glassware, Collectibles,
Tools, Lawn Mower, Etc.
Located within Chanceford
Community Hall, Brogue,
York County, PA. From
York and North, Rt. 74
Southeast Through Red
Lion to Right Turn at
Brogue Post Office. From
the Bel Air/Jarrettsville, MD
area, MD Rt. 165 North thru
Whiteford Traffic Signal
to PA onto PA Rt. 74 and
Continue North to Left Turn
at Brogue Post Office, and
go 1/4 mi. to Hall on Left.
Ruth E. Spyker. Sechrist
Auct.

SAT. MAR. 11 - 8:30AM
Farm machinery, house-
hold goods. A. Lincoln &
Edith Keener located 1562
Maytown Rd., Elizabeth-
town, Pa. Lanc. Co. Take
Rt. 743, midway between
E-town and Maytown. Ray-
mond Miller & Jim Hershey,
aucts.

SAT. MAR. 11 - 8:30AM
Farm equip, horses, bug-
gies, household goods,
quilts and antiques. No

Lancaster Farming, Saturday, March 4, 1995-E11

building materials at this
auction. Gordonville Fire
Co. Local Aucts.

SAT. MAR. 11 - 9AM Fine
Antiques and Hit & Miss
Engines. Located at the
Dave Mowery Farm,, 26
Mowery Lane, Newburg,
PA. From Tumpike Inter-
change Exit 15, Take Rt.
997 North to Mowery Lane
on the Right. Terry L. Shet-
ter Auctioneer.

SAT. MAR. 11 - 9AM Out-
standing tool sale. Windsor
Fire Hall from Rt. 24 Red
Lion, Pa. take Rt. 624 N.
(W. High St.) approx. 1.8
mi. then left on Penn St.
approx. 2/10 mi. Russel
Wright, Ralph Brennerman,
aucts.

SAT. MAR. 11 - 9AM, Trac-
tors, Farm Equipment,
Potato Equipment, Cub
Cadet 105 Riding Mower,
1966 Int. Truck, 1982
Chrysler New Yorker,
Household Goods. Located
785 Stehman Church
Road, Washington Boro,
Manor Twp., Lanc. Co., Pa.
(Dir.: Take Letort Rd. 3 Mi.
West Of Millersville. Turn
Onto Safe Harbor Rd. Then
Turn Left Onto Stehman
Church Rd. Watch For Sale

Signs). Sale By, Clyde K.
Eshleman Estate. Howard
E. Shaub, Inc. Auct.

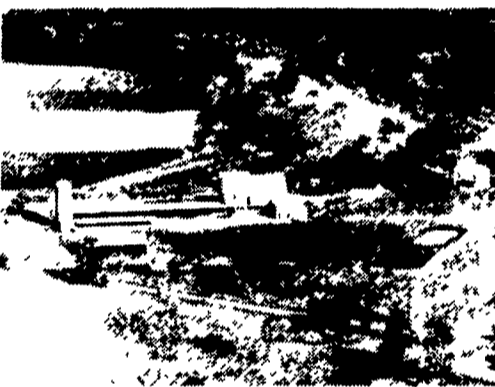
SAT. MAR. 11 - 9AM, Out-
standing Antique Furniture,
Oil Painting & Fine Anti-
ques. Located At Tall Pines
Celebrations, 2500 E. Har-
risburg Pike, (At The
Intersection Of Route #230
And Geyer's Church Road)
Middletown, PA. Just West
Of The Tollhouse Road Exit
Of Route 283. Sale For,
Albert D. & Anne M. Stuart.
Harold (Abe) Shaffner &
Mark Diefenderfer, Aucts.

SAT. MAR. 11 - 9AM Anti-
ques, collectables, toys &
adv. items. Held within the
East Berlin Fire Co., Locust
St., East Berlin, Pa 2
blocks S. of square. Stane-
ly Resh, owner. Miek Ster-
mer, auct.

SAT. MAR. 11 - 9AM Art P.
and Margaret Lutz, trucks,
farm equip, tools, antiques.
3206 School House Rd.,
Middletown, Pa. From Har-
risburg or Lanc. take Rt.
283 to the Hummelstown/
Middletown exit, 1 block N.
of Rt. 283 turn left on
School House Rd., farm is
on the left. Aaron E. Martin,
aucts.

JUNIATA COUNTY DAIRY FARM, WOODLAND AND MODERN FARM MACHINERY AT PUBLIC AUCTION

Sat., APRIL 1
Real Estate 1:00 P.M.
Farm Related Items and Machinery
- starting at 10 A.M.



From Hbg. take Rt 322 west approx. 45
mi to the Mifflintown Exit. Turn right on
Rt 35 north, approx. 1/4 mi to the
Industrial Park Road. Go 1 mi, turn left
on the Cedar Spring Road and follow to
sale site.

This approx. 160 acre farm, located in
Walker Twp., Juniata Co., is just perfect for
the beef or dairy farmer. Approx 100 acres
tillable, balance pasture and woodland,
w/some marketable timber.

A 40' x 80' bank barn w/attached 40' x 170'
loafing area, Double 8 Herring Bone
milking parlor, milk house w/office & 1
bedrm apartment, 20' x 50' silo, trench silo
w/concrete bottom & a 40' x 80' metal pole
building. A 2 sty., wood frame, 4 bedrm
farm house and a 2 car garage
80 additional, tillable acres w/house and
barn, available for rent.

WOODLAND and FARM WILL BE
OFFERED SEPARATE W/NEW SURVEY,
COMPLETED BY SALE DAY. IF YOU
ARE LOOKING FOR A FARM
W/ENDLESS AGRICULTURAL AND
DEVELOPMENT POTENTIAL, DON'T
MISS THIS ONE.

SHOW DATES: March 4th and 11th from
10 a.m. to 2 p.m. or Ph. 717-436-2058
for an appt.

TERMS are 10% down at time of sale,
bal. in approx. 120 days, other terms at
sale. No out of state checks.

PRE-ARRANGED, OWNER FINANCING
- TO QUALIFIED BUYERS, IS ALSO
AVAILABLE.

CHET L. ADAMS, Owner
Harold E. Powell, Jr. Atty.

Long's Auction Service
Ph. 717-527-2405 or 4458
Fax 717-527-2941
AU001702L

LUNCH STAND
NOT RESPONSIBLE FOR ACCIDENTS

LARGE SATURDAY AUCTION!

ANTIQUES, FURNITURE, PIANO, APPLI-
ANCES, STAIR ELEVATOR, GLASSWARE,
COLLECTIBLES, TOOLS, LAWN MOWER,
ETC. FROM THE HOME OF MRS. RUTH
E. SPYKER, WIDOW OF THE LATE JAMES
A. SPYKER OF YORK, PA., AND FROM
AN-OTHER FINE YORK COUNTY
HOUSE-HOLD.

SAT., MAR. 11, 1995 -
8:30A.M.

To be held within Chanceford Community Hall,
Brogue, York County, PA. From York and north, Rt.
74 southeast through Red Lion to right turn at
Brogue Post Office. From the Bel Air/Jarrettsville,
MD area, MD Rt. 165 north thru Whiteford traffic
signal into PA onto PA Rt. 74 and continue north
to left turn at Brogue Post Office, and go 1/4 mi. to
hall on left.

FURNITURE & APPLIANCES: Beautiful 9 pc.
mahog. DR suite w/ dbl. ped. table, 6 shieldback
chairs, buffet & breakfast china; Walnut hall rack w/
mirror & umbrella holder; 5 pc. Victorian parlor suite;
Danecker grandmother's clock w/ cherry case; 4 pc.
cherry BR suite w/ dbl.bed, chest of drawers & 2
nitestands; DP piecrust tables; dovetailed chest w/
orig. finish; nice modern oak corner cupboard; 2
mahog. step tables & drum table w/leather inlay;
white Fr. Prov. BR suite; maple pineapple poster bed
& chest of drawers; oak dresser; cherry dropleaf coffee
table; 5 pc. blonde oak BR suite; lg. room-size "Warm
Morning" propane gas heater; "Liberty Bell" fireplace
insert; 2 fine decor. plank bottom chairs; cane seat
chairs & rocker; DR table, 6 chairs & server; carpet
rocker; Boston rocker; maple highchair; doll rocker;
picnic table & benches; resin table & chairs; chiffonier
w/mirror; good wicker rocker; hall tree; 2 lg. dinner
bells; GE washer & elec. dryer; Kelvinator chest freezer;
patio set; nice ornate desk made from pump organ;
lamp tables; kneehole desk; 5 pc. oak dinette set; 2
chrome & formica dinette sets; 4 drawer treadle sew-
ing machine; pictures & frames; king-size headboard;
metal wardrobes; mahog. sewing cabinet; cuckoo
clock; mirrors; lamps; chairs; stands; etc; etc;

FOSTORIA, COLLECTIBLES, HOUSEWARES: set
of Fostoria "American" for 12 w/extras - to be sold
piece-by-piece; set of "Liberty Blue" ironstone dinner-
ware; Candlewick pcs; crocks; kerosene lamps; glass
basket; Boscul PB glasses; Oneida SS flatware;
Christmas decorations; Jacobs Lumber Co. adv pcs;
linens of all kinds; old "Pinwheel" quilt; buggy robe;
candy containers; old baby items; sheet music; donut
& cookie cutters; pattern glass; German pcs; and many
collectibles and antiques unable to list; INVALID
EQUIPMENT: Flinchbaugh (York, PA) "Butler Stair
Climb" approx. 20 ft. in length, w/ sectional design
for a perfect fit on any stairs, easy installation; adult
invalid stroller - like new; wheelchair; walker; port-
able commode; etc; TOOLS, LAWN EQUIPMENT,
ETC: Iron butcher kettle; Snapper 20" self-prop. rotary
mower; MW rototiller; trimming mowers; garden
tools; 24 ft. alum. ext. ladder; step ladders; wheelbar-
row; wooden plane; watering can; 2 & 5 gal fuel cans;
SS milker pails; milk cans; garden tools; etc; etc.

TERMS: CASH TO STRANGERS; LOCAL
CHECKS W/ ACCEPTABLE I.D.

JAY L. SPYKER, P.O.A. FOR
RUTH E. SPYKER



HOME-COOKED SOUPS & PIES; SMOKED
HOTDOGS ETC. BY CHANCEFORD VOLUNTEERS!

Public Auction

MONDAY,
MARCH 6, 1995
9:00 AM

"Watch for expanded listing weekly"

CONSIGNMENT AUCTION

Location: Lebanon Area Fairgrounds, Lebanon, PA. from Rt.
72 south of Lebanon turn L at light onto Rocherty Rd. to
Fairgrounds on right.

TRACTORS & CAR & SKID LOADER & TRENCHER
Case 1070 w/cab, 20x38 Radials; IH 666 gas, wf, 2 hydraulics; AC 5050
diesel with loader; JD 2010 gas; JD M w/loader; Ditch Witch 2200
w/blade; 1990 Ford XLT Lariat 4x4 Club Cab Pickup; 1977 Chevy C60
w/18' Body; 1979 Oldsmobile Delta 88; Towmotor 5,000 lb. solid tires,
LP gas; Case 1537 uni-loader, Case Hydra Cat Skid Loader; Case W18
Rubber Tired Loader.

TILLAGE EQUIPMENT

IH 700 5x16 Auto Reset w/side hill hitch; Ford 142 5x18 Auto Reset
w/on land hitch; Oliver 3x14 3 pt. cushion trip; Brady 5T disk chisel;
UFT 10T 3 pt. chisel plow; JD BW 13' disk; JD AW 10' disk; JD
KBA 10' disk; 14' drag harrow, Landoll 12' 3 pt. field cultivator, JD 2x
trailer plow on rubber, Oliver 3x16 pull plow, IH 3x rollover plow, JD 11
row bean planter, IH 720 5x20 auto reset plow, Oliver 2 row potato
planter, IH 56 4x30 corn planter, 11' cultipacker, Oliver 3x16 3 pt. plow,
JD 4 section drag harrow, JD 220 18' center fold disk, Brillion 14'
transport spring harrow, White 5400 6 row planter w/ no-till colters,
Glencoe 20' field cultivator; NH. 11' Plowing Disc; Case 10' Transport
Disk; IH 720 4x18" Plow; 10' 3 pt. Rotovator; 7' 3 pt. Field Cultivator;
IH 56 44 Corn Planter.

HAY EQUIPMENT

NH 256 rake w/rubber teeth & dolly wheel; 3) Grimm ground drive hay
tedders; IH fast hitch sickle mower; Pequea round bale feeder wagon
(nice), Gehl 910 forage wagon w/roof & 3 beaters, 2) hay wagons w/false
fronts, IH 650 harvester w/2R corn & hay head, Kasten forage wagon w/roof,
New Holland 474 haybine (sharp), New Holland 315 baler w/thrower,
Gravity wagon, NH 495 haybine, IH 461 haybine, IH 430 baler w/thrower,
JD 3960 harvester, JD 7' hay head w/wheels, JD 2R corn head; NH 479
Haybine; NH 55 Hayrake; NH 269 Baler w/Thrower; NI 324 Compicker
w/12 roll husking bed.

OTHER EQUIPMENT

2) 42' storage trailers; Eager Beaver 5 HP self contained post hole digger
(like new); Kelley backhoe for skid steer or 3 pt.; large material bucket
for NH skid steer; Mohawk 6' 3 pt. rotary mower; JD 7' pull rotary
mower (parts); Cardinal Jr. 16' alum. elevator; belt drive buck saw;
Bronco 3 pt. spin seeder; Cab to fit IH 1066; IH 6' front snow blade; 6'
and 7' 3 pt. snow blades; 18.4x38 9 bolt axle duals; 6) 18' longx20" Steel
I beams; Barnard & Leas Large Stationary grain cleaner; IH 6 cyl. gas
power unit; 300 gallon skid tank; 1,000 gallon fuel oil tank in good
condition; gauges & hose for torch; 300' portable air comp. hose; 2
dozen new 1 1/8" air hammer points, Land Pride 8' 3 pt. hyd. angle
blade, 2) Gravity bin wagons, 500 gallon portable alum. tank w/3 HP
pump, Oliver 64 grain drill, 20' gooseneck trailer w/10,000 lb GVW, 6)
elevated hog nursery pens, cyclone 3 pt. broadcast seeder; 12' Gruber
wagon bed; Zimmermann 300 gal. Hyd. drive centrifugal pump sprayer ;
JD 450 Hydra Push Manure Spreader; Pony cart.

We will be accepting items at the sale site March 2, 3 and 4, 1995.
Some items subject to prior sale.

LEBANON VALLEY
AUCTION COMPANY, INC.
138 College Avenue
Annville, PA. 17003
RY000014-L

AUCTIONEERS:

Harry Bachman AU-000033-L
Glenn T. Wenger AU-002510-L

For Consigning Equipment Contact Either of The Following:
GLENN WENGER 717-866-2130
HARRY BACHMAN 717-867-1809
DAVID WENGER 717-866-2135
DENNIS GRUMBINE 717-272-4641