

Take Exit 20B
Off Of 83, 5 1/2 Mi. West
To Belmont Farm.

White 2-135

1 Owner, Clean Unit, Low Hrs., 135 Hp.,
20.8x38 Radials - 90%

\$11,500

Also Available:

IH 886 w/Cab \$6,000

Case 970

w/Cab, 90Hp., New Rub. \$7,250

MF 1155

w/Cab, 140 Hp., 20.8x38 90% \$6,750

IH 1468

w/Cab, low Hrs., 140 Hp. 90% Rubber

\$11,500

410-833-9091

Winter
is Here

Be
Prepared



Snowblowers

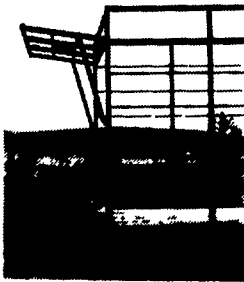
Call For
Reduced
Prices

Widths	Recommended H.P.	Price
8 Ft.	70-100 w/hyd. chute	\$2,500 ⁰⁰
8 Ft. Double	70-100 w/hyd. chute Auger	\$2,900 ⁰⁰
9 Ft. Double	100-150 w/hyd. chute Auger	\$3,700 ⁰⁰

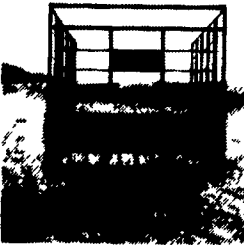
All prices F.O.B. Milton, Pa

Weaver's Equipment Sales
401 S. Pine St. Milton, Pa.
Phone: 717-712-1275, Monday Calls

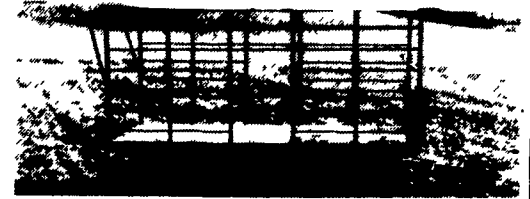
DUTCH BROTHERS



**Unique
Rear Unloading**



Options:
Running Gears
& Flat Beds



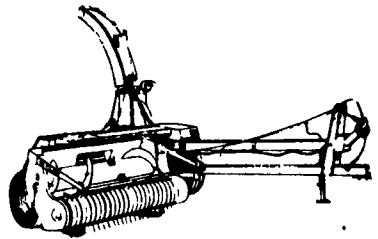
- 18' x 8' inside
- 14 ga square tubing, for extra strength and long life
- Front and rear openings need only 38" clearance
- End gates made of extra heavy expanded metal, and spring loaded latches
- Beds built of all oak

New Chain
Release
Side
Opening

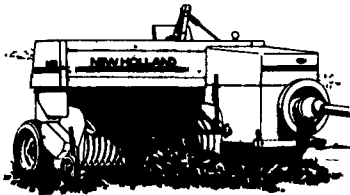
- 3" x 8" main beams
- 2" x 5" cross member
- Nailed with galvanized nails
- Bolted with plated bolts
- Fabricated side rail for extra strength
- 8 ton gear
- 11L tires & tubes
- Extension tongue
- Built to last

HAY
SEASON
SPECIAL

Dutch Brothers
(717) 776-7465 or
(717) 776-3363



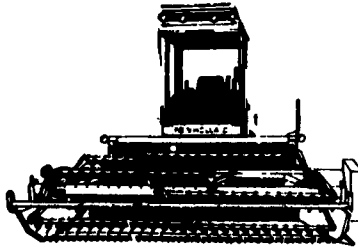
NEWHOLLAND



**Special Prices On This Listing
Plus Other Special Priced Items**

MARCH SPECIALS

	List	Cash
565 Baler, eng, st. whls., hitch & chute	\$12,980	
NH 630 Baler	\$13,200	Call
NH 254 Rake	\$5,100	For
NH 258R Rake	\$4,800	March
NH 166 Win. Inv. Ext. Hyd.	\$6,710	Specials
NH 824 Corn Head	\$5,510	
NH 28 Blower	\$4,780	
NH 60 Blower	\$5,475	



Hay & Forage Equipment
Finance Rates:
2%-18 Months - Or Check With
Us For Big Cash Rebate Amounts

DEPENDABLE MOTOR CO.

East Main St., Honey Brook, Pa.
(610)273-3131 or (610)273-3737

DILLER EQUIPMENT

800-640-4448

Chambersburg, PA

Specializing In Truck Tankers



**Complete Tankers
Only \$4,995**

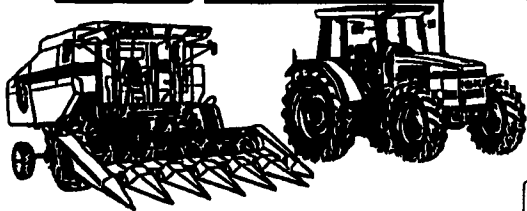
Tankers in Stock

Customized Tanks To Fit Your Truck
and Your Needs

- 1500 - 7000 Gallons
- 1/4" Steel Tanks
- Rugged Steel Fenders
- Large Lid Type Hopper
- Optional Fan Locations
- Epoxy Coatings Inside & Out
- Matching Colors



**AGCO
ALLIS**



BRANCH
Rts. 309 & 100
New Tripoli, PA
(610) 767-7611
Mon.-Fri. 7:30AM-5:00 PM
Sat. 7:30AM-12:30 PM

**NEW IDEA
HESSTON**

C.J. WONSIDLER BROS



* 3 LOCATIONS *
Trumbauersville to Finland Rd.
Quakertown, PA
(215) 536-1935 or 536-7523
Mon.-Fri. 7:30 AM-5:00 PM
6:00 PM - 9 PM
Sat.-Parts 7:30 AM-1 PM
Sales 7:30 AM - 4 PM



**AGCO
ALLIS**



BRANCH
Lobachsville, Oley, PA
(610) 987-6221 or 987-6257
Mon.-Fri. 7:30 AM-5:00 PM
Sat. 7:30 AM-12:30 PM



NEWHOLLAND

TRACTORS

- DA 7145 D 4 WH
- AC 7050D w/Cab, Heat
- AC 7030 D w/Cab
- AC 6080 D
- AC 190XT D
- AC 180
- AC D18 D 3pt Hitch
- AC WD
- White 1855D
- Case 500B
- MF 1155D
- MF 285D
- JD 3010 D
- JD 1010 G

COMBINES

- AC Gleaner M2 w/15' grain & 630 corn head
- AC Gleaner K w/10' Grain & 238 Corn Heads
- AC Gleaner E w/Cab, 10' Grain And 238 Corn Heads
- JD 6600 D w/Cab & Air, 13' Grain & 630 Corn Heads
- JD 4400 D Combine w/13' Grain Head
- IH 715 w/Cab, 13' Flex Head & 438 Corn Head
- JD 334 3-Row Corn Head
- (2) JD 235 2-Row Corn Head

TILLAGE

- JD 12' Disc
- AC 2300 15' Disc
- White 253 17' Disc
- Oliver 563 4-B Plow
- (2) JD 5-B Plow
- AC 2000 6-B Plow
- AC 50 Plow
- Ford 5-B Plow
- Ford 4-B Plow
- AC 500 Loader
- AC 400 Loader
- IH Loader for 300 Tractor

BALERS

- NH 273 w/thrower
- IH 445 w/thrower
- NH 269 w/thrower
- NH 320 wre
- Case 230 w/thrower
- JD 346 wire
- IH 27 w/thrower
- NH 69
- IH 46 w/thrower
- NH 268
- IH 46
- JD 14 w/thrower
- AC 443
- IH 47 w/thrower

FORAGE HARVESTERS

- Gehl 400 w/2 heads
- Gehl 600 w/2 heads
- Gehl 1200 w/2 heads
- NH 717 w/1-row head
- NH 717 w/2-row head
- JD 35 w/2 heads
- IH w/1-row cornhead
- Fox 625 Wagon
- AC 2-row cornhead
- (2) Gehl 99 Blower
- (2) NH 28 Blower
- AC 60 Blower
- JD 65 Blower
- (2) Weaverline Carts Model 330 Bu. Ex.

HAY TOOLS

- Hesston 1091 Mower Cond.
- Hesston 1090 Mower Cond.
- IH 990 Mower Cond.
- (3) NH 489 Haybine
- NH 38 6' Harvester
- AC 490 Mower Cond.
- NH 460 Haybine
- (2) Hesston PTO 10 Mower Cond.
- (3) NH 479 Haybine
- Hesston 1010 8' Mower Cond.
- Hesston 1014 14' Mower Cond.
- JD 1380 14' Mower Cond.
- JD 1209 Mower Cond.
- NH 1495 S.P. Haybine

NEW TRIPOLI OPEN HOUSE—FRI., MARCH 24