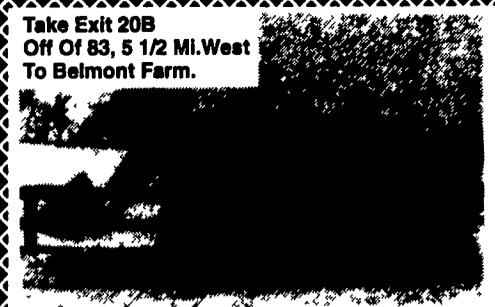


REBUILT DIESEL ENGINES

- Petter ABI - 4 HP Rope Start.....\$689
 - Petter PHI - 7 1/2 HP
Hand Crank Start.....\$1,289
 - Lister LPI - 3 HP Rope Start.....\$689
 - Murphy D302-1 - 9 HP
Hand Crank Start.....\$1,389
 - X Deutz FIL812 - 11 HP with Clutch..\$1,989
 - X Lister LRI - 4 HP.....\$1,389
 - Lister SL - 10 HP.....\$1,589
 - X Lister ST3 - 30 HP.....\$2,789
 - X Lister ST2 with 540 PTO, Red,
Clutch, 30 HP.....\$2,889
- Note Engines marked X are priced with 12 Volt Electric Start & With Alternator Charge System Wired On Them.
New Lister Diesels from 5 to 103 HP Hand Clutches & Speed Clutches ON-HAND


CONTACT DISTRIBUTOR
BYLERS DIESEL REFRIGERATION
HCR61 Box 32
Belleville, PA 17004

Take Exit 20B
Off Of 83, 5 1/2 Mi. West
To Belmont Farm.




JD 2440
with New DUAL LOADER,
\$11,000
410-833-9091

**HOW YOU CAN GET UP TO 15%
MORE IN THE BAG WITH THE
KELLY RYAN SELF-CLEANING
CENTERLINE BAGGER**



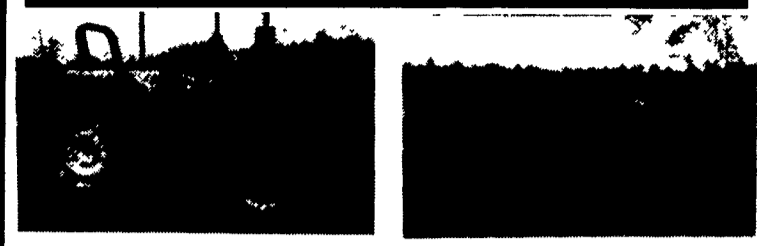
- Pack more punch from the center with less h.p. for tighter and more uniform bags of feed
- 7', 8' & 9' diameters 2 wh standard (up to 12 by special order)
- 1/2" cables, 150' and 200'
- No hydraulics. Rust-free, chrome disc mechanical brake
- Tongue centered for close bag spacing and road travel
- Oil bath gearbox & drive chain
- #160 roller chain main rotor drive
- Gearbox 540 or 1000 rpm PTO
- Safety-first, V-belt driven conveyor for side feeding
- Design permits bagging nearly twice as fast as other models
- Adapts quickly for road transport
- Frontload dump hopper available
- 6' Rotor 3-4' above ground
- Many more desirable features

SILOFLEX SILAGE BAGS
CUSTOM BAGGING-All items USA made.
AG PRODUCTS CO., INC.

717/328-3177 
Dependable farm equipment since 1945

AG INDUSTRIAL INC.

Route 1 on MD PA LINE
410-658-5568 800-442-5043



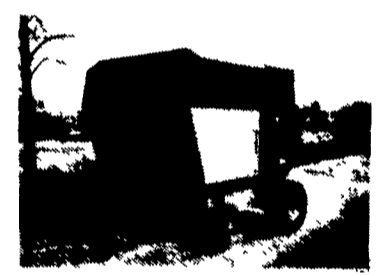
Ford 6610
72 Hp, 1990, 15.5 x 38, Power Adjust Wheel
N.H. 489 Haybine
4 years Old, Good Rolls, Had A Good Home

TRACTORS & LOADERS

- Int. 684 w/2250 Loader
 - Ford 555A TLB
 - Ford 340 Tractor Loader
 - Ford 345 C Trac w/Box Blade
 - Ford 601 Trac w/Triumph Sickle Bar, 34HP
 - Ford 1715 Compact Trac, 27 HP
 - Ford 5000 55 HP Trac.
 - Ford 5610 62 HP Trac.
 - Ford 7610 Trac
 - Ford 7710, 4WD, Cab & Air
 - Ford 6610 4WD w/Loader, 72 HP
 - Kubota G5200, 14 HP
 - Kubota L345 DT, w/Loader, 34 HP
 - JCB 3CX Trac/Ldr. Bckhoe
 - Case 411B Trac, 37 HP
 - Case W18 Loader
 - AC 6080 Tractor, 83 HP
 - Ford 1210 Tractor, 16 HP
 - Ford 7840 4WD, 90 HP
 - Case 530, 37 HP
 - Ford 4000, 50 HP
 - NH 555 Skid Steer
 - NH 781 Skid Steer Loader
 - Ford 4400 Tractor Loader
 - Ford 601-Sharp, 34 HP
 - Ford 801 w/Front Blade, 41 HP
 - Ford 3910 w/Allied Loader, 42 HP
 - Ford 6610 II, 72 HP
 - JD 310B T-L-B w/Cab
 - Cub Cadet 1105 Lawn Tractor
 - Oliver 550 Tractor w/loader
- HAY & FORAGE**
- NH 254 Rake Tedder
 - Hesston 10' Hydro Swing
 - NI 279 Cuditioner
 - (2) NH 320 Baler w/58 Th
 - NH 326 Baler



Plenty of Clean, Late Model Ford Tractors
40 HP thru 90 HP



N.H. 853 Round Baler
w/Bale Command, 5' x 4 3/4' Bale

MISCELLANEOUS

- JD 3 Bottom Plow
- Brillion 16 ft. Cultipacker
- Int. 14 ft. Disc
- IH Farm Truck w/Dump
- CTL Front Cut 6' Mower
- Dynavent Straw Chopper, 8HP Honda
- Vermeer 3 pt. Backhoe
- Oliver 12' Disc
- Bush Hog SQ48 Rotary Cutter

TOBIAS EQUIPMENT CO., INC.
Halifax, PA 17032
Phone: 717-362-3132
1-800-362-3132



CLEARANCE SPECIALS

- 1994 Ford 1620 w/loader, 60 hours...\$16,000
- MF 283, 65hp Open Station, 1991
Model.....\$12,500
- JD 4250, Power Shift, Cab 2WD.....\$35,000
- JD 2950, Open Station, 2WD.....\$17,900
- JD 8250 14x7 Grain Drill w/Fert. & Press
Wheels, Nice.....\$4,800

USED GARDEN TRACTORS

- JD 318, 46" Deck, Low Hours, Nice.....\$4,750
- 50" 3 Pt. Grooming Mower, 2000 RPM,
Nice.....\$600
- Ford LGT12, 42" Mower & Snow Plow...\$1,499
- JD 175 w/38" Mower.....\$1,825
- Cub 1811 w/48" Mower & 3 Pt. Hitch.....\$2,950
- JD 160 w/38" Mower.....\$1,575
- Ford YT16H, Nice.....\$1,500

COMBINES

- JD 6620 hydro, level land, reversible feeder house, header height, clean, 3150 hrs.\$33,000
- 215 Flex head, good condition.....\$5,500
- JD 215 Rigid Head.....\$2,000
- JD 215 Flex Head, Needs Skid Plates...\$3,500
- (2) 653A Row Crop Heads.....\$2,500/each
- JD 444 Corn Head, Low Tin.....\$4,800
- JD 244 Head.....\$1,800

WINTER SPECIALS

- Amco F15 20' rock flex wing disc.....\$3,800
- Landall 20' wing chisel plow.....\$2,800
- IH Chisel Plow, 10' pull type w/buster bar.....\$2,200
- Brillion 12' Cultipacker w/transport.....\$1250
- JD 875 4R Minimum Till Cultivator, Like New.....\$3,850
- Athens 13' Disc, Model 200.....\$5,200
- IH 6x16" Plow w/Hillside Hitch.....\$1,000
- Krause Chisel Plow w/Harrow Attach., Model 3515, 20'.....\$5,500
- Oliver Cockshutt, Model 246, 12', Chisel Plow, Pull Type.....\$1,600
- 21' White Wing Disc, Rock Flex Model 273, Nice Shape.....\$10,500
- Amco Model TJ3 Terrace Disc.....\$5,500
- JD 885 6R No-Til Rigid Cultivator, Like New.....\$7,800
- Int. 45 18' Hyd. Wing Field Harrow.....\$2,750
- IH 315 12' Roller Harrow.....\$2,600

MISCELLANEOUS - USED

- JD 1008 Rotary Cutter, Good Condition..\$3,800
- GMC 14' Aluminum Walk-In Van, Dually..\$3,600
- 6x44 Mayrath Auger PTO Drive.....\$750
- JD AMT Utility Vehicle, Model 626, 2 Seater.....\$4,750
- Kasco 6' Blade w/Power Angle, Will Fit Most Loader Frames, New Condition.....\$1,250
- Shaver HD-H-12 Post Driver, New Condition.....\$3,500
- (2) 18x4x28 Industrial Tires On Rim, 80% Rubber.....\$300/Each
- Gehl BF 87 High Throw Silage Blower.....\$425
- Liquid Fertilizer Attachment For 7200 12R Planter w/Openers.....\$3,500
- Gem Top, Topper For Pickup, 8' Box.....\$200

MISCELLANEOUS - NEW

- JD 380A Blade For JD 770.....\$1,550
- JD 717 Rotary Cutter.....\$2,475
- Landpride 60" Rototiller.....\$1,695

FEBRUARY SPECIALS

- NH 400 Bu. Manure Spreader w/end gate..\$5,500
- Gehl Model 309 Scavenger II side delivery spreader.....\$2,400
- NH Model 479 haybine.....\$1,295
- NH 489 haybine, nice condition.....\$6,900
- Landpride 48" Over Seeder.....\$5,800
- JD 3 Section Drag Harrow, New Condition..\$1,500
- JD 8300 21x7 Grain Drill, Used.....\$3,800

J.L. HOLLINGER & SONS INC.

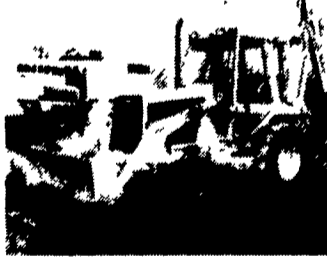
RT. 72N, Manheim, PA.

717-664-2444 8 AM To 6 PM
NEW & USED Farm & Construction Equip.

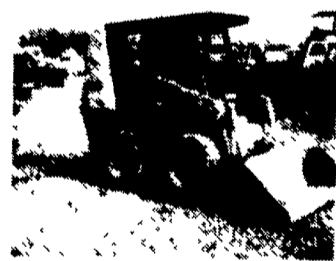
717-665-2354 After 6 PM
FAX 717-664-2835



'88 Case 688 EROPS cab, 30" bucket
\$33,500



'87 Cat 426 EROPS cab, Exhoe
\$24,500



'91 Case 1840 60" GP bucket
\$13,500

EXCAVATORS

- '79 Case 880B EROPS cab, house leveler, 42" bucket.....CALL
- '86 JD 490, EROPS cab, 24" bucket.....\$38,500
- '88 Case 688, EROPS cab, 30" bucket.....\$33,500
- '88 Case 888, EROPS cab, 36" bucket.....\$39,500

TRAILERS

- Eager Beaver 10HA tag-a-long Trailer, air brakes.....\$6,750

SKID LOADERS

- '93 Bobcat 853, 66" GP bucket, aux. hyd, 800 hrs.....\$17,500
- '92 Bobcat 843 B, 66" GP bucket, aux. hyd, new tires. **Coming In**.....\$15,500
- '91 Bobcat 743B, w/909 backhoe attach.....\$10,500
- '89 Case 1835C Utility Bucket.....\$10,500
- '87 Bobcat 743, 60" Dirt bucket, aux. hydros, new tires..\$10,500
- '87 Case 1845C GP bucket, flotation tires, aux. hyd.\$12,000
- '87 Case 1835B GP bucket, aux. hyd.\$8,000
- '87 Bobcat 743, GP bucket, aux. hyd. 1500 hrs.....\$9,750
- '86 Case 1835B GP bucket, aux. hyd.....\$8,000

FORKLIFTS

- '87 DYNALIFT D4 P60 Shooting Boom 35' reach, 6000 lbs., Lift.....\$35,000
- Petebone Super 4 F.L. 14' Mast Aws.....\$5,750
- Case 585C 21' mast, Cummins diesel.....\$16,500

LOG SKIDDERS

- JD 640 Grapple & Winch.....\$22,000

LOADERS

- '87 Trojan 1500Z Art 4WD Loader with Forks, EROPS Cab..\$25,000
- '87 Kobelco LK700, EROPS cab, 4yd GP bucket.....\$27,500

'87 Kawasaki 65Z-2, OROPS canopy, GP bucket.....\$23,500

- '87 Dresser 520B Art 4WD Loader GP Bucket, 3rd Valve EROPS Cab, New Tires.....\$35,000
- '85 Kobelco LK300, EROPS cab, GP bucket.....\$23,500
- '79 John Deere 544B Art 4WD Loader, GP Bucket EROPS Cab.....\$22,000
- Case W-9, Cab, GP Bucket, Good Tires, needs minor engine work.....\$5,200

BACKHOES

- '92 JCB 214S EROPS cab, 4WD, extend-a-hoe, 900 hrs..\$40,000
- '92 Case 580 Super K, TLB, EROPS Cab, 4WD, Ex-Hoe, 4WD.....\$45,000
- '89 Case 580K TLB EROPS cab, extend-a-hoe, 4WD.....\$32,000
- '88 Ford 555B TLB, EROPS cab, standard hoe, 4WD.....\$25,000
- '88 Cat 426 EROPS cab, extend-a-hoe.....\$24,500
- '87 Case 580 Super E TLB, EROPS cab, extend-a-hoe, 4NI bucket.....\$22,000
- '87 Case 580 Super E TLB, EROPS cab, extend-a-hoe.....\$19,500
- '87 Case 580 Super E TLB, EROPS cab, standard hoe, 4WD.....\$24,000
- Case 580B TLB, OROPS canopy, standard hoe.....\$9,000

CRAWLERS

- '87 Case 1155E crawler loader GP bucket, OROPS canopy, sweeps.....\$37,500
- '86 Case 1155E crawler loader, GP bucket, OROPS canopy, sweeps.....\$37,500
- John Deere 755A Crawler Loader, GP Bucket.....\$21,000
- IH TD6 Crawler Loader, 4'1 bucket, diesel.....\$6,250