

Aberdeen Sales Company, Inc.

Complete Auction & Appraisal Service
Churchville, Md.

Report Supplied by Auction
Wednesday, March 1, 1995

SLAUGHTER STEERS: MARKET 2.00 LOWER. CHOICE 2-4 1100-1400 LBS. 70.00-72.25; SELECT & LOW CHOICE 1000-1500 LBS. 66.00-69.00; HOL. STEERS HI CHOICE & PRIME 1250-1400 LBS. 64.00-66.00; CHOICE 1200-1500 LBS. 61.00-63.00; SELECT, ALL WEIGHTS, 59.00-63.00.

SLAUGHTER HEIFERS: MARKET 2.00 LOWER. CHOICE & PRIME 950-1300 LBS. 68.00-71.50; SELECT ALL WEIGHTS 900-1400 LBS. 59.00-65.00.

COWS: MARKET 2.50 LOWER. BRK.

UT. & COMM. 2-4 BULK 42.00-45.00; HI DRESSING 46.00-48.00; CUTTER & BON. UT. 41.00-43.00; HI DRESSING 43.00-46.00; CANNER & CUTTERS 38.00-41.00; LOW DRESSING 37.00 & DOWN.

BULLS: MARKET 2.00 LOWER. ALL WEIGHTS 1100-1900 LBS. 49.00-61.00. VEAL CALVES: MARKET STEADY. CHOICE AND PRIME 200-400 LBS. 73.00-84.00; HI GOOD AND LOW CHOICE ALL WEIGHTS 61.00-69.00. FARM CALVES: MARKET STEADY.

HOL. BULLS 100-125 LBS. 95.00-117.00; HOL. BULLS 85-95 LBS. 70.00-105.00; HOL. HEIFER CALVES 100-120 LBS. 160.00-190.00; SMALL FRAME 70-105 LBS. 70.00-123.00; SLAUGHTER CALVES ALL WEIGHTS 30.00-45.00.

FEEDER CATTLE: MARKET 2.00 HIGHER. BULLS & STEERS 400-900

LBS. 58.00-83.00; HEIFERS 300-700 LBS. 57.00-69.00.

LAMBS: MARKET STEADY. CHOICE & PRIME 90-110 LBS. 75.00-90.00; LIGHTER LAMBS 80.00-102.00; EWES - HEAVY 33.00-48.00, LIGHT 35.00-55.00.

GOATS: MARKET STEADY. SMALL 30.00-45.00; MEDIUM 40.00-60.00; LARGE 80.00-110.00.

HOGS: MARKET 2.00 LOWER. 210-250 LBS. 37.00-39.00; 255-300 LBS. 35.00-38.00; SOWS - HEAVY 24.00-29.00; SOWS - LIGHT 18.00-25.00; BOARS ALL WEIGHTS 18.00-21.00.

Frederick Livestock Auction

Frederick, Md.

February 27, 1995

Report Supplied by Auction

SLAUGHTER COWS: 110 HEAD. TREND 2.00-3.00 LOWER. UTILITY 38.00-42.75; HIGH DRESSING

43.00-45.25; CANNERS 35.00-39.00; SHELLY 35.00 DOWN.

BULLS: YG#2 1100-1600 LBS. 48.00-51.00; 1 THIN AT 45.00.

FED STEERS: SELECT HOLSTEINS 1200 LBS. TO 54.00; STANDARD 46.00-51.00.

FED HEIFERS: FEW OFFERED; HOLSTEIN STO 47.75.

VEAL CALVES: 204 HEAD. 1 CHOICE 285 LBS. AT 93.00; CULLS 5.00-7.00 HIGHER. 85-110 LBS. 50.00-64.00; 50-80 LBS. 45.00-55.00; WEAK/ROUGH 44.00 DOWN.

FARM CALVES: 5.00 LOWER. HOLSTEIN BULLS #1 95-120 LBS. 105.00-120.00; FEW 85-90 LBS. 95.00-105.00; #2 75.00-95.00; HOLSTEIN HEIFERS #1 90-120 LBS. 170.00-185.00; 75-85 LBS. 90.00-170.00; BEEF X BULLS AND HEIFERS TO 110.00.

STOCK CATTLE: STEERS FEW 400-600 LBS. 65.00-76.00. HEIFERS: 400-600 LBS. TO 66.00; HOLSTEINS 300 LBS. TO 93.00; HOLSTEINS 450-500 LBS. 77.00-86.00.

BULLS: FEW 500 LBS. 72.00-76.00.

GOATS: LARGE 90.00-95.00; MEDIUM TO 61.00.

PIGS AND SHOATS: NONE.

BUTCHER HOGS: 2.00 LOWER. US#1&2 230-250 LBS. 37.00-38.00; 215-260 LBS. #1&3 35.50-36.00; 260-270 LBS. 35.00-36.00.

SOWS: 1 600 LB. AT 31.00.

BOARS: 250-300 LBS. 23.00-25.00; 1 THIN 470 LBS. AT 19.00.

HATFIELD QUALITY MEATS...37.25

Lebanon Valley Livestock

Fredericksburg, PA

Tuesday, February 28, 1995

Report supplied by Auction

STEERS: 15 HEAD. LOW CHOICE 1140-1195 LBS. 66.50-67.25; SELECT 1320-1490 LBS. 63.25-65.00; CHOICE HOLSTEINS 1195-1440 LBS. 58.25-63.25; SELECT 1265-1455 LBS. 54.00-57.50.

HEIFERS: 5 HEAD. CHOICE 1115-1135 LBS. 65.50-66.75.

COWS: 89 HEAD. BREAKING UTILITY AND COMMERCIAL 43.00-46.25; CUTTER AND BONER UTILITY 40.00-43.50; CANNER AND LOW CUTTER 37.75-39.75; SHELLS 37.00 DOWN.

BULLS: 2 HEAD. YG#2 45.25-47.75.

CALVES: 127 HEAD. STANDARD AND GOOD 75-105 LBS. 35.00-47.00; UTILITIES 45-80 LBS. 30.00-40.00; #1 HOLSTEIN BULL CALVES 95-125 LBS. 100.00-120.00; #2 BULL CALVES 95-105 LBS. 80.00-97.00; #1 HOLSTEIN HEIFER CALVES 90-110 LBS. 140.00-190.00; #2 HEIFER CALVES 75-90 LBS. 85.00-120.00; BEEF BULL CALVES X HEIFERS 90-105 LBS. 87.00-105.00.

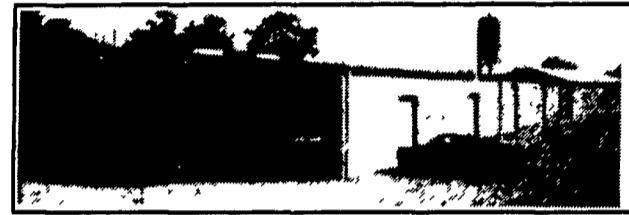
SOWS: 58 HEAD. US#1&3 420-670 LBS. 28.50-31.00; #2&3 350-500 LBS. 25.50-28.00.

BOARS: 3 HEAD, 465-490 LBS. 19.00-20.50.

HOGS: #1&2 240-254 LBS. 35.85-36.75; #1&3 224-258 LBS. 35.00-36.25.

ATTENTION TOBACCO FARMERS

We Couldn't Do It Without You!



ATTENTION FARMERS: We will have demonstrations of tobacco stripping in October 1995 with approximately 100 lath of tobacco to strip. We will have company men from tobacco processing companies here to help teach how to grade tobacco. We need better tips (that is the top of the stalk). If we continue to straight strip like this year. We will lose to the competition. Please think about this example:
700 lb. skid of out grade tobacco at .60/lb - \$420.00 at auction it brings \$1.00/lb. - \$700.00 That is \$280.00 more per skid!
If the farmer has 10,000 lbs. to sell at auction with a charge of .02/lb. to sell, it doesn't take many skids to pay the difference! So, farmer, please be considerate before you sign a contract. If you sold to country or auction, don't sign or contract for your 1995 crop. 1996 looks good for better prices.

FOR SALE: Hyster Tow Motor, 4,500 Lb., Late Model, Solid Tires, Good Condition. LP Gas \$4,000

PARADISE TOBACCO SALES
717-687-0990
Mitch White-Sale Mgr. • Mitch Ashby-Auct.



Evergreen Tractor

41 S. Fairlane Ave. • Myerstown, PA 17067
717-272-4641 • 717-866-2585 • 1-800-441-4450

COMPLETE LINE OF PARTS FOR YOUR JOHN DEERE AND KINZE PLANTERS

TRACTORS:

- AC 5050 Tractor w/Loader.....\$5,475
- JD 7520 Duals 90%, Triple Remote, 8650 Engine, Sharp, 240 HP.....\$17,500
- JD 2010 w/Loader.....\$4,950
- JD 300 Utility w/Fall Mower.....\$6,950
- JD 4020 Syncro, Narrow Front, Nice.....\$8,950
- Hyster Dual Wheel Pneumatic, 6,000 Lb. Fork Lift.....\$6,250
- JD 4230 Fender Tractor, Turbo, 18.4x38 Tires.....\$16,500
- Massey Ferguson 65 w/Loader.....\$6,850

HAY & FORAGE EQUIPMENT:

- Coldwell 8' 3 pt. Mower.....\$475
- JD #9W 3 Pt. Mower.....\$675
- JD 1 Row, Row Crop Attachment, Nice.....\$550
- JD 5 1/2' Pickup Attachment
- NH 1010 Bale Wagon.....\$4,350
- NH 268 Baler w/Ejector
- Hesston 1081 Mower Conditioner.....\$2,950
- NH 495 12' Haybine.....\$4,850
- JD 3 Row Row Crop Atch. 30" For Harvester.....\$4,450
- IH 430 Baler w/Thrower
- JD 35 Harvester With Pickup
- Hesston PT 10 Haybine.....\$950
- JD 2 Row 30" Row Crop Atch. For Harvester
- JD 3950 Harvester, Sharp
- Hesston 1014 12' Hydro Swing Mower Conditioner.....\$4,250
- Wooden Bale Body w/Gear.....\$855
- JD 35 Harvester, 540 PTO w/1 Row Crop.....\$1,550
- JD 25A Fall Mower, Nice.....\$1,275
- NH 450 3 Point Mower.....\$950
- 9' Grimm Hay Tedder
- NH 822 2 Row Narrow Wide Corn Head, Rotary Knife, Sharp.....\$950
- JD 385 Round Baler, Like New

ROLLER HARROWS AND CULTIMULCHERS

DISCS AND FIELD CULTIVATORS

- IH 470 16' Wing Fold Disc Harrow.....\$1,950
- Bush Hog 10' Disc Harrow, Clean.....\$1,650
- Kewanee 20' Flat Fold Field Cultivator w/Gauge Wheel.....\$1,250
- Lely 15' Roterra Power Harrow.....\$3,950
- JD 210 14' Black Gang Disc.....\$3,850
- JD 18' Field Finisher.....\$1,450
- 18' Wing Fold Field Cultivator S-Tines.....\$950
- JD 235 27' Wing Fold Disc.....\$6,500
- JD 4 Row RM Cultivator.....\$1,050
- Taylorway 20' Hyd. Fold (narrow) Field Cultivator, Tine Harrow.....\$2,450

CULTIPACKERS

Brillion 12' w/Big Shaft.....\$1,250

PLANTERS & GRAIN DRILLS:

- JD 8300 21x7 DD Drill.....\$3,450
- JD 7000 6 Row Planter, Dry Fertilizer.....\$7,450
- JD 23x7 DD Drill w/Press Atch.....\$4,850
- JD 11 Row 15" Bean Planter.....\$1,575
- 6 Each 7000 Planter Units.....Each \$575
- IH 800 4 Row Plate Planter, Dry Fert. Monitor.....\$4,250
- JD 18x7 DD Drill w/Grass.....\$1,750

Coming In...

- JD 450 Spreader
- Several JD Quick Couplers, Category II and III
- White 6342 16" 3B Roll-Over Plow
- JD 1210A Grain Cart w/Roll Tarp
- M & W Mulch Mariager Model 1575, 5 or 7 Shank
- JD 19 1/2' Field Cultivator, Hydraulic Fold
- Miniker 6 Row No-Till Cultivator
- Brady 12' Stalk Chopper
- JD 1610 13' Pull Type Chisel
- JD F960 12' Roller Harrow
- JD 8630 30.6x32 12' Leon Blades 3 pt. PTO Low Hours

ROW CROP CULTIVATORS & ROTARY HOES

- JD 6 Row RM Cultivator.....\$1,250
- JD 4 Row RM Cultivator.....\$1,050
- JD Ft. Mtd. 4 Row Old Style Cultivator.....\$450

PLOWS-MOLDBOARD AND CHISEL:

- 5 B 18" Ford Auto Reset On-Land Plow.....\$1,850
- Landoll 9 Shank Disc Chisel, Sharp.....\$5,850
- IH #55 11 Tooth Pull Type Chisel.....\$1,850
- IH 9 Tooth 3 Pt. Chisel.....\$1,650
- JD 7B 2500 Plow.....\$3,950
- JD 1450 6-16" Semi-Mtd. Plow.....\$2,250
- IH 9 Tooth Pull Type Chisel.....\$1,850
- JD 3200 6x18" Pull Type Auto Reset Plow.....\$3,950
- Artaway 12 Ft. 3 Pt. Chisel.....\$1,650
- JD 5B Model F945H Semi-Mt. Roll-Over Plow.....\$4,850
- JD 2500 5x18" Auto Reset On-Land Plow.....\$2,950
- IH 710 4-16" Auto Reset Semi-Mtd. Plow.....\$2,450

MISCELLANEOUS

- NH 791 Tandem Axle Spreader, 2 btr. w/hyd tail gate..\$3,950
- JD 16.9x34 Direct Axle Duals w/New Tires.....\$1,200
- Transcraft 42' Drop Deck Trailer, Air Ride, Nice.....\$8,500
- 3 Pt. Box Scraper.....\$625
- 7' Rhino Heavy Duty Blade.....\$975
- Century 200 Gal. Mtd. Sprayer, 40' Boom, Hyd. Pump \$1,250
- 500 Gal. Poly Nurse Tank w/Trailer And Gas Engine.....\$575
- Super 6 Pettibone High Lift.....\$8,950

USED SKID STEER LOADERS & ATTACHMENTS:

- 75" Industrial Grapple Bucket.....\$1,425
- Kelly Backhoe.....\$4,500
- Ford 340C Skid Steer Loader.....\$5,850
- Ditch Witch 2200 Right-On Trencher.....\$5,950

COMBINES & PICKERS:

- JD 443 4 Row 30" Corn Head.....\$4,650
- White 8900 Combine 4WD w/15' Grain Head and 708N 6 Row Corn Head and Chopper.....\$23,500 Make Offer
- JD #343 3 Row 30" Corn Head.....\$3,650
- JD 653 6 Row 30" Bean Head.....\$2,450
- JD 13' Quick Tach Rigid Grain Head.....\$1,850
- JD 213 Rigid Head For Side Hill.....\$2,650
- JD 4400 Del. Combine, New Engine
- JD 7700 Turbo Hydro, 4 Whl. Drive, 30.5x32, 14.9x28, '78 Model, Hyd. Latch, Chopper D.A.M. Sharp.....\$17,500
- JD 213 Flex head.....\$3,650
- JD 653 Hi-Tin Corn Head.....\$6,450

USED PARTS FOR THE FOLLOWING MACHINES: 1-800-441-4450

- 2500, 2600, 2700 & 2800 Plows
- F350 Hydraulic Reset Plows
- Cultivator Parts
- Grain Drills
- Trip Plows
- Disc Harrows
- Cultipackers and Roller Harrows (John Deere and Brillion)
- 35 and 3800 Harvesters
- Grain Platform
- Combine Corn Head

We Ship UPS Daily This is a partial listing. Please call for availability even if your machine is not listed. **We Ship UPS Daily**

Store Hours
PARTS-Mon. Thru Fri. 7:30 A.M. To 4:30 P.M.
Sat. 8:00 A.M. To Noon
SERVICE-Mon. Thru Fri. 8:00 A.M. To 4:30 P.M.

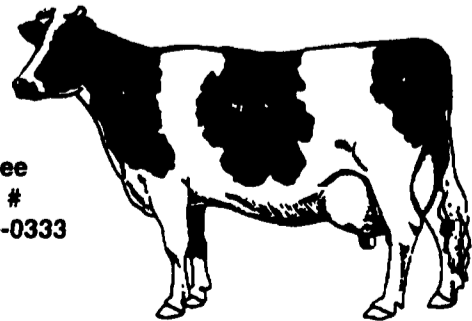
NEED TO CUT THE FEED BILL?

DAIRY BLEND COMPLETE AND CONCENTRATE FEEDS

COMPLETE FEEDS CONCENTRATE FEEDS

- #79516 Dairy Blend Flakes 16% All Natural *160⁴²
- #79518 Dairy Blend Flakes 18% All Natural *169⁴²
- #79520 Dairy Blend Flakes 20% All Natural *178⁴²

- #51232 32% All Natural Protein Pellets *208⁴²
- #51238 38% All Natural Protein Pellets *233⁴²
- #50734 34% All Natural Protein Pellets *243⁴²



Toll Free Order # 1-800-995-0333

Bulk Feed Available in 1 to 24 Ton Loads
Feed prices for week of March 6 and Subject to Change Weekly with Grain Market
Includes 8 ton volume discount and cash discount of 2 1/4% due 15th following month. Deduct additional \$3.00 per ton if paid in 10 days.

pennfield feeds
1-800-732-0467
Quality - Value - Service

