

SPRING FARM TIRE VALUES!



**TRACTION
TORQUE
FARM
TIRES**



| SIZE | PLY | PRICE |
|---------|-----|-------------------|
| 14.9-28 | 6 | 230 ⁰⁰ |
| 16.9-30 | 6 | 255 ⁰⁰ |
| 18.4-30 | 6 | 315 ⁰⁰ |
| 18.4-38 | 6 | 365 ⁰⁰ |
| 18.4-38 | 8 | 395 ⁰⁰ |

**Front Wheel Drive
Tractor Tires**

320/75R24 DT710 1*

\$299⁹⁵



| SIZE | PLY | PRICE |
|---------------|-----|-------------------|
| 13.6R28 DT710 | 3* | 399 ⁹⁵ |
| 14.9R24 DT710 | 3* | 459 ⁹⁵ |
| 14.9R28 DT710 | 3* | 479 ⁹⁵ |
| 15.9R28 DT710 | 2* | 599 ⁹⁵ |
| 14.9R30 DT710 | 3* | 549 ⁹⁵ |
| 15.9R30 DT710 | 2* | 599 ⁹⁵ |
| 18.4R28 DT710 | 2* | 639 ⁹⁵ |

DT 710 RADIAL REAR

| | | |
|---------|----|-------------------|
| 20.9R28 | 1* | 679 ⁰⁰ |
| 18.4R24 | 1* | 499 ⁰⁰ |
| 18.4R28 | 2* | 659 ⁰⁰ |
| 18.4R30 | 1* | 409 ⁰⁰ |
| 14.9R28 | 3* | 449 ⁰⁰ |
| 16.4R30 | 1* | 499 ⁰⁰ |
| 16.9R30 | 1* | 439 ⁰⁰ |
| 18.4R28 | 2* | 629 ⁰⁰ |
| 16.9R30 | 1* | 499 ⁰⁰ |
| 13.6R28 | 1* | 399 ⁰⁰ |
| 16.9R30 | 1* | 539 ⁰⁰ |



18.4R38 1*

\$509⁹⁵

**DYNA
TORQUE II
TUBE TYPE**

The Hard Working
Hard-Pulling Tractor Rear

| SIZE | PLY | PRICE |
|---------|-------|-------------------|
| 11.2-28 | 4 Ply | 189 ⁰⁰ |
| 12.4-28 | 4 Ply | 199 ⁰⁰ |
| 15.5-30 | 6 Ply | 285 ⁰⁰ |
| 18.4-34 | 8 Ply | 389 ⁰⁰ |
| 18.4-38 | 8 Ply | 419 ⁰⁰ |
| 18.4-38 | 8 Ply | 459 ⁰⁰ |
| 20.8-38 | 8 Ply | 579 ⁰⁰ |

**TRIPLE RIB FRONT
FARM TIRES**

| SIZE | PLY | PRICE |
|--------|-------|------------------|
| 400-15 | 4 Ply | 38 ⁹⁵ |
| 500-15 | 4 Ply | 41 ⁹⁵ |
| 550-16 | 4 Ply | 48 ⁹⁵ |
| 600-16 | 4 Ply | 47 ⁹⁵ |
| 650-16 | 6 Ply | 55 ⁹⁵ |
| 750-18 | 6 Ply | 79 ⁹⁵ |



**FOUR RIB FRONT
FARM TIRES TUBE TYPE**

| SIZE | PLY | PRICE |
|---------|-------|-------------------|
| 95L18 | 6 Ply | 84 ⁹⁵ |
| 11L15 | 6 Ply | 92 ⁹⁵ |
| 750-16 | 6 Ply | 69 ⁹⁵ |
| 1000-16 | 8 Ply | 95 ⁹⁵ |
| 1100-16 | 8 Ply | 119 ⁰⁰ |

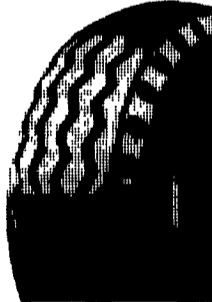


**FARM UTILITY
WAGON TIRES**

| SIZE | PLY | PRICE |
|--------|-----------|------------------|
| 95L14 | 8 Ply TT | 49 ⁹⁵ |
| 700-16 | 6 Ply TT | 45 ⁹⁵ |
| 95L15 | 6 Ply TL | 54 ⁹⁵ |
| 11L15 | 6 Ply TT | 59 ⁹⁵ |
| 11L16 | 6 Ply TT | 49 ⁹⁵ |
| 126L18 | 8 Ply TT | 67 ⁹⁵ |
| 126L18 | 10 Ply TT | 74 ⁹⁵ |



**LABOR FRONT
BACKHOE
TIRES**



| SIZE | PLY | PRICE |
|-------|-----------|-------------------|
| 11L15 | 8 Ply TL | 89 ⁰⁰ |
| 11L15 | 10 Ply TL | 112 ⁰⁰ |
| 11L16 | 10 Ply TL | 126 ⁰⁰ |
| 11L16 | 12 Ply TL | 142 ⁰⁰ |

**INDUSTRIAL SURE GRIP
REAR
BACKHOE
TIRES**

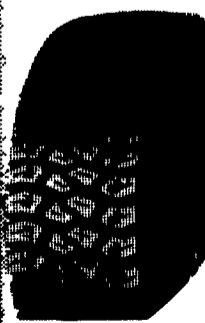


| SIZE | PLY | PRICE |
|----------|-----------|-------------------|
| 14.9-24 | 6 Ply TL | 299 ⁰⁰ |
| 16.9-28 | 8 Ply TT | 399 ⁰⁰ |
| 17.5L-24 | 10 Ply TL | 380 ⁰⁰ |



**ECONOMY
LIGHT TRUCK
WORKHORSE EXTRA
GRIP RADIALS**

| SIZE | PLY | PRICE |
|-------------|-----|-------------------|
| LT235/75R15 | (B) | 94 ⁰⁰ |
| LT235/75R15 | (D) | 121 ⁰⁰ |
| LT245/75R15 | (D) | 129 ⁰⁰ |
| LT221/65R16 | (D) | 118 ⁰⁰ |
| LT235/65R16 | (B) | 127 ⁰⁰ |
| 950R165 | (D) | 130 ⁰⁰ |



| | | | |
|---|--|---|---|
| Shueys Sales & Service Jonestown Road Ono, PA 717-865-4915 | Dices Tire Shop 1421 Lincoln Way Chambersburg, PA 717-264-9312 | Zimmerman Farm Service School Rd. Bethel, PA 717-933-4114 | Bastian Tire Sales R2603 Reach Road Williamsport, PA 17701 717-323-8651 |
| Lebanon Valley Imp. Co. 700 E. Linden St. Richland, PA 717-866-7518 | Bastian Tire Sales Rt. 11 & 15 Shamokin Dam, PA 717-743-1571 | BHM Farm Equipment RD 1 Rt. 934 North Annville, PA 717-867-2211 | Horlacher & Sherwood 153 E. Tioga Tunkhannock, PA 717-836-1116 |

THE BEST TIRES IN THE WORLD HAVE GOODYEAR WRITTEN ALL OVER THEM