



1981 MACK
4,800 Gal. Vac Tank
8" Load and 8" Unload
Very Good Condition
\$45,000 neg.
Call Rick (717) 464-0841

Fiberglass Truck Cap, Will Fit Short Bed Chevy/GMC Truck, Good Condition, Asking \$400. (717)538-1771.

FOR SALE: 1987 Ford F250, 4x2, red, 6-cyl., 4-speed, rebuilt motor and trans., 152,000 miles, price \$3500. 717-362-3333 talk to Lynn or Larry.

New 5.9 Cummins turbo diesel engine, 230hp, \$6,900. 5.9 Dodge Cummins turbo diesel engine, 18hrs on engine, \$4,900. (717)626-1394.

Parting Out 1972 Chevrolet 10-wheeler, 6V-53 working Detroit diesel engine, 5+4 trans. 717/746-1582 after 6pm.

Three 18' flatbed gooseneck trailers with 5th wheel plates, \$3500/each OBO. Chester Co. 610/696-6187.

WANTED: 12x7 wooden truck bed, prefer Ford Emblem written on back, must be good. Harold Sample, 717/786-3087.

36 REAL ESTATE

17 ACRES for farming or ready to build on in Ephrata, \$135,000. 717/733-3267.

1974 Catalina 12X65/10X65 Addition 4BR, 1BA, Spacious LR/Hot Air Heat, AC, Shed, Furn. & Appl. Negot. Private Park Along Ind. River Bay, DE, Boat Docks, Private Beach. (610) 779-3164 (610)777-8676.

19A Farmette, central PA. 2 1/2 story frame house, 4BR, decks, patio, barn, garage, hay storage, timber, well, septic, western exposure. NO zoning. Low taxes, view. CENTURY 21-CORMAN ASSOCIATION Irene Moss 814-234-5600.

200A farm 12 mile CornellU develop, golfC, both large barn, nice village home, natgas, open, wooded some gravel \$550K, Box 4207, Ithaca, NY 13852.

25A (Greenfield) gently rolling grassland, some woods. Easy access Reading, Pottsville, Allentown, Harrisburg. Pine tree lined entrance. 360 degree long distance views. Nice setting... \$147,500. Financing by R.E. Investor/ Owner. Berks Co. 610-926-3841.

For RENT, Modern 60 cow tie stall barn, 2 concrete silos, high moisture corn silo, feed available. Located in Tioga County. Immaculate 4BR home. Must have references and good house-keeping habits. Ready for immediate possession. After 7 pm, (215)766-2092.

RENT: 70 Tie Stall Barn w/ pipeline, 3 silos, heifer barn & calf hutches, 137 tillable acres mostly alfalfa & corn. Includes 14x70 mobile home w/12x12 addition. 717/836-2211.

78 +/- acres Cumberland Co. NJ, Lawrence Twp, Lummistown Rd., 335 +/- ft. road frontage IDEAL HOME SITE, Great Hunting \$66,000.00 call 609-455-8820.

88 Acres, Farrow Definish Hog Barn 800 Cell Unit, 1 House, Bank Barn and Other Outbuildings for Sale or Lease. Maryland (301)432-8332.

ACREAGE FOR SALE: 470 +/- acres, Centre County, PA. Adjacent to Sproul State Forest. Will entertain offers above \$250/per acre. Owner reserves the right to accept or reject all offers. Call Mike Scott at 814-742-5263.

All kinds of farms for sale in MD and PA. Smith and Associates Real Estate, Jackie Nichols, (717) 762-8449, (717)597-8161.

Attractive 150 cow dairy. Well drained 354 acres Southern Michigan. 2 houses, HBO Realty (800)825-8589.

BARGAIN HOME-Foreclosed HUD, VA, S&L Bailout properties. Low Down. Fantastic savings. Call 1-805-962-8000 Ext. H-4156 for list.

BRADFORD COUNTY, PA FARM: 171A, approx. 70 acres wooded, barn, 3BR ranch home in edge of woods setting overlooks large pond with mountain backdrop, beef, horses, sheep... \$205,000. ENDLESS MOUNTAIN REAL ESTATE 717-297-2409.

Buy or Rent dairy farm facilities: 51 stalls, adequate heifer housing, manure storage, four silos, 2 brick houses. Adams County. (717)359-4383.

COUNTRY STORE, Clinton County, rural area, high traffic, grocery store, lunch bar, gas. Large 2 story home 2+ acre lot, owner highly motivated to sell. Call RELL REAL ESTATE, (717)398-7316.

Dairy Farm: 60 ties, pens, pipeline, 2 silos, 3-4BR house, 2BR mobile home, 80A. \$140,000. 717/537-6301.

Dairy Farm sale or lease, rental income to pay mortgage. Modern 102 Freestall, double 6 W/takeoff, 2000 gal. bulk tank, silage available, manure lagoon. 610-681-4134.

FARMETTE- 5BR home, 2-car garage, barn, tobacco shed, milkhouse and spring fed pond on 12A in Ephrata, \$235,000. 717/733-3267.

Farm for sale by owner: 110A, 70 tillable, remainder woods and gullies, 32x50' 2-story barn w/well, 1BR house w/heated shop. Near Dundee, NY. \$130,000 neg. 607-243-8335.

Farmland Wanted To Rent: In Lancaster or York County. 717/872-9152, 717/872-4058.

Finger Lakes Region: 73 acres of gently rolling hillside, overlooking Owasco Lake, imagine the sunset from that view! Potential development or fantastic horse ranch. No buildings to contend with. 890' of Lake frontage. All for under \$600,000. Owner financing available. Nancy Cheney Netti, Broker/Owner, Classic of CNY, 224 Genesee St, Auburn NY, 13021, (315)253-8491.

FOR RENT: 300 Acre farm, 200+ tillable, house & dairy barn. Available for Spring. Somerset Co., PA. 814/634-5507.

FOR SALE: 43A Perry Co. farmette, approx. 2 1/2 wooded, balance pasture, farm ground. 5BR house, 1 1/2 baths, daylight basement, kitchen, livingroom. 5 stall horse barn, w/ attached wagon shed and storage. 36x52 pole building workshop, stream. All buildings 5 years old. Adjoining property also available. 5BR house, bath, kitchen, livingroom, sun-room and daylight basement, 2-stall horse barn w/ storage, stream and pasture. Elmer Fisher, RD1, Box 152A, Blain, PA 17006 (Located 4 miles West of Blair on Fowler Hollow Rd)

FOR SALE BY OWNER: 2 1/2 story, 2BR, 1 1/2 bath, new addition, house completely remodeled. Bank barn plus additions, some fenced pasture, 37 acres \$265,000. 215-257-0155

FRANKLIN CO. 153A Limestone farm, bordering stream. 2-story Limestone home (On National Register of Historic Places), plus 2BR ranch home. Road frontage, potential for development... \$575,000. J.E. KELSEY REAL ESTATE Dave McLucas 717-328-5629

Hog, beef, grain farms for owner/operators or investment. (515)484-3248, or write: Twin Cities Real Estate, Box 114, Toledo, IA 52342.

NITTANY VALLEY FARM FOR RENT, 36 Tie stalls, 3 Silos, 90 Tillable Limestone Acres (717)726-7460.

NY farm land in the golden triangle between Canandaigua, Penn Yan, and Geneva, 190A by owner, \$157,000. Evenings, (607)522-4525.

Potter County: Large hunting camp, completely furnished, sleeps 20, 50+ acres, stocked trout stream, well and septic, \$69,900 firm. (717)786-9181.

PEIFFER BROS.

All Vehicles Purchased Here Receive
36 Month
45,000 Mile Extended Warranty



1987 DODGE DAKOTA 4X4 V6, AT, AC, Local Trade, Low Miles



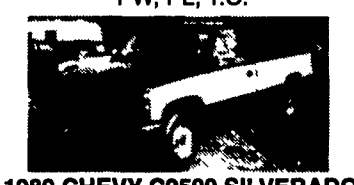
1985 CHEVY K-20 SUBURBAN 350, V8, AT, PS, PB, Trailer Package



1990 CHEVY ASTRO VAN AWD, CL, 7 Pass., V6, AT, AC, PW, PL, T.C.



1990 JEEP CHEROKEE LIMITED 6 Cyl., AT, AC, PW, PL, T.C., Leather Interior



1989 CHEVY C2500 SILVERADO 350 V8, AT, AC, PW, PL, T, C, 1-Owner



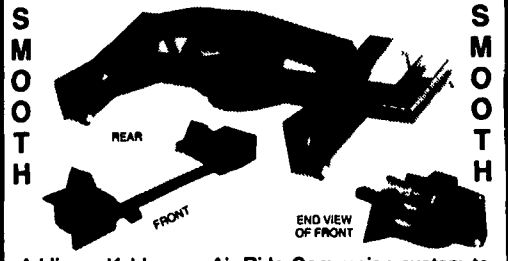
1988 GMC SUBURBAN SLE 4x4, 5.7 V8, AT, AC, PW, PL, T, C, Rear AC

Over 50 Fully Reconditioned Cars & Trucks In Stock!

PEIFFER BROS
Guaranteed Used Cars & Trucks

807 South 4th St. & Rt. 61, Hamburg PA 610-562-0100
Sales Department Hours: Weekdays 9 to 9; Sat: 9 to 5 // Service Hours: Weekdays 8 to 5

KELDERMAN AIR RIDE



Adding a Kelderman Air Ride Conversion system to your present suspension will result in a two stage suspension system. This is not to be confused with adding an Air bag mounted above the axle. Allows adding extra spring leaves to increase load rating and still maintain Air-Ride comfort.

The bolt on basic package utilizes an air stem mounted in a convenient location to add or remove air from the system.

Optional 12 volt compressor allows changing air pressure setting on the go.

Currently available for front and rear suspension in Dodge Series 250 & 350 trucks. Available soon for Dodge Dakota models.

Also available for some Ford, Chevy, and GMC truck models. Special orders available for most motor homes. This option will smooth out the ride on those rough-road fishing/camping trips.

Ask For Dean At:

BINKLEY & HURST BROS. INC.

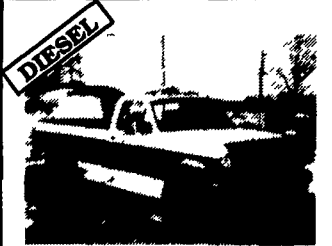
133 Rothsville Station Rd. - Lititz, PA 17543
717-626-4705



Bobby Gerhart's Truck World

Mon. - Fri. 9-8, Sat. 9-3

2400 E. Cumberland St. Rt. 422 Lebanon, PA 17042 717-273-7995



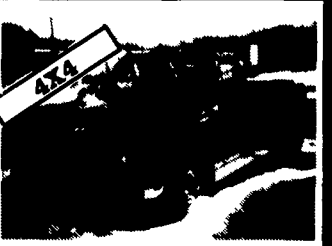
'93 FORD F250 7.3 Diesel, Auto, A/C, XLT, Loaded, Tan/Mocha, 60,200 Miles #F-308



93 CHEV. G-30 CUBE VAN 12 Ft. Box, 350 V8, AT, AC, 37,000 Miles, Like New #C-232



94 FORD CREW 4X4 351 Auto, Long Bed, White, 16,800 Miles #F309



93 DODGE D350 DUALLY Cummins Diesel, AT, A/C, PS, PB, Extra Fuel Tank, Ready To Do Your Towing #D-127



89 FORD F350 SUPER CAB, DUALLY 460 V8, AT, AC, Cruise, PL, PW, Tilt, Only 43,000 Miles #F294



89 FORD F450 SUPER DUTY 10 Ft. Stake Body Dump, 460 V8, 5-Spd., AM-FM, only 43,000 Mi. #F310



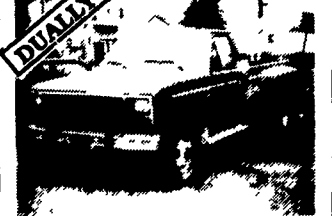
88 CHEV C-3500 DUMP 350 V8, 4-Spd., Tool Box Only 51,000 mi #C242



80 INT. DUMP W/ PLOW 360 Gas, 26,000 GVW, 12 Ft. Blade Ready for Snow, #I-108



89 CHEVROLET K3500 CREW CAB 454, Auto, AC, PW PL Cruise, Dually Silverado, Black/Silver, 52,300 Miles #C233



81 FORD F350 DUALLY 400 CID, Stick, Great Farm Truck, Bronze, #F-302 \$3,600



93 CHEV C3500 Hi-Top Walk-In Utility Body, 350 V8, AT, AC, Only 6,800 Miles #C-239



94 FORD SUPER DUTY Chassis w/Flatbed, AT, AC, 7.3 Turbo Diesel, XL, Trim #F-303