

32 MISCELLANEOUS

Thor Jackhammer w/250' 3/4" hose, \$200. 908-453-2088.

Tig Welder, 300A, Lincoln Idealac, AC & DC, \$2250. 717/354-3105.

Turret Lathe, W/S, 20" swing, w/motor, complete, \$1250. 717/354-3105.

Unipunch and Stripit, 1 1/2 Wx8"D \$95, 2 1/2 Wx8"D \$200, 2 1/2 Wx8"D \$250, all like new. 717/354-3105.

WANTED: Original floor, grainery boards, 2" flooring, barn beams, tobacco sheds, siding. (717)229-2806. mobile 717/880-4549.

WANTED: Used tools and machinery. Buy, Sell, Trade, Consign or Finder. B.J. TOOL & SUPPLY, RT 422W, Myerstown, PA. 1-800-772-9845.

WANTED: Used shaper, fair condition, hyd. motors and pumps, power unit, 60hp. 410-820-2191.

32a ANTIQUES

Antique Manure Spreader, Over 100 Years Old, Wooden Web, Good Shape, Called the Maple-leaf. (412)253-4500.

Oliver Super 88 Diesel, Excellent Condition, 1 Owner. (717)742-7039.

33 RECREATIONAL VEHICLES

1983 Yamaha 225 3-wheeler, new tires, original owner from new, excellent shape, \$800. Lebanon (717)273-3823.

20' camping trailer, nice condition, \$1295. 717-244-9391 anytime.

Blue Bird 36' motor home, Caterpillar diesel engine, includes gas range, refrigerator, microwave, bathroom w/shower, Kambota diesel generator furnace, AC. 703-955-2677 after 7PM.

Kohler RV special generator, 7KW, 23hp, clean, excellent operating condition, new \$3200, sell for \$725. 301-475-2502.

35 TRUCKS & TRAILERS

Sleigh, one horse open, manufactured Waterloo Wagon Works, between 1905 and 1924. Dark red. Excellent condition. Photo available. \$1600. 301-678-6531.

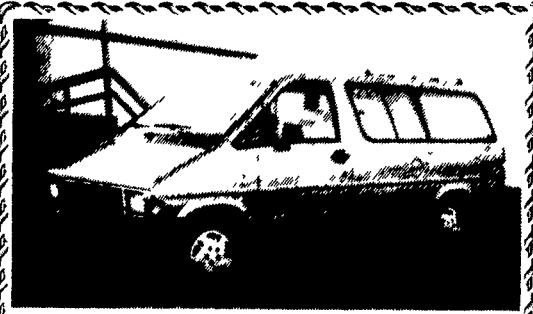
34 AUTOS

1967 Ford Bronco for Parts or Restoration, Frame Excellent, Sandblasted and Primed, Many Other Parts. Asking \$600. (717)538-1771.

1972 Chevell, 2 Door HT, No Motor, Restorable, \$800; 1968 Chevell 4 Door HT, Good Parts Car, 99% There, \$200. (301)831-8600 (301)831-3300.

1981 Olds Delta 88 Diesel, good solid car, may need head gaskets and inspection, \$250. 717-653-4123.

1982 Ford, 15 passenger van, 351 motor, A/C, good condition, \$4,200. (717)445-4410.



1990 Ford Aerostar XL Ext
7 Pass., Blue, 6 Cyl., AT/OD, AM/FM Cass, Tilt, Cruise, AC, 78,900 mi.
\$7,850
717-567-7438

MELARD'S TRUCK & AUTO SALES
955 E. Main St., Ephrata, PA
(717) 738-4870

1993 Grand Prix SE 4 Dr., 3.1, Auto, Air, Cruise, Tilt, AM-FM Cass, Elec. Windows & Locks, 23,000 Miles, Black..... **\$12,900**

1992 Plymouth Grand Voyager LE, 3.3, Auto, Dual Air & Heat, Cruise, Tilt, AM-FM Cass., Elec. Windows, Locks & Seat, Privacy Glass, 56,000 Miles, Blue..... **\$14,000**

1991 Ford Aerostar XLT Extended, All Wheel Drive, 4.0, Auto, Dual Air & Heat, Cruise, Tilt, AM-FM Cass, Elec. Windows & Locks, Privacy Glass, 48,000 Miles, Black & Silver.. **\$12,900**

1994 Chevy Astro CL Extended, All Wheel Drive, 4.3, Wortex Auto, Dual Air & Heat, Cruise, Tilt, AM-FM Cass., Elec. Windows & Locks, Only 15,000 Miles, Sandstone & Brown. **\$19,500**

1991 Chevy Astro CL Extended, All Wheel Drive, 4.3, Auto, Air, Cruise, Tilt, AM-FM Cass, Elec. Windows & Locks, Privacy Glass, 60,000 Miles, Black..... **\$12,900**

1990 Chevy Lumina Euro, 3.1 auto., 4-door, black, 60,000 miles, many extras, excellent condition, \$7500. 717/438-3205.

CHEVY'S, FORD'S, etc. Cars and trucks. Over 300 vehicles. Every Monday 6:30PM. PUBLIC AND DEALERS. YORK SPRINGS PUBLIC AUTO AUCTION, RT 15, York Springs, PA 1-800-222-2038.

Fords, Chevys, Etc. Over 100 available every Wednesday 6:30 PM. YORK PUBLIC AUTO AUCTION. Exit 12 Interstate 83. tags and transfers available w/ proof of insurance. 717-266-5634.

35 TRUCKS & TRAILERS

12' Hury aluminum cattle body, very good shape, \$2,250 OBO. (410)526-6892.

16' Flatbed 4-ton dual axle, electric brakes, custom utility trailer, \$1995. 610/489-3827.

18ft. Thermo King refrigerated van body, good cond., diesel operated. \$3,500. 717-597-9761.

1950 Dodge dump truck \$250; 1977 International cattle truck \$350. 717-359-2565.

1986 Ford F-800, 16' aluminum bulk feed body, 5+2. \$14,500. (607)656-4808.

1988 International S1954, single axle tractor, 466 diesel engine, air brakes, 7 speed, good condition, \$8,900. (717)445-4410.

1988 Ford F-150 300 Engine, 5Spd Transmission, Good Condition, \$4995. (717)345-2488.

1989 Ford F350 4 Door Dually, Loaded, PDL, PL, XLT, Lariat w/5th Wheel Hook-Up, 460 Engine, Tires Like New, \$17,000 OBO. Must Sell. (717)445-7857.

1991 Ford F-250 4x4, 460 club cab, 62K, XLT Lariat, black, au/tr, \$14,800. Must Sell. New York 518/678-9935.

1992 UD 2300 210hp, 6-spd., low pro., 19.5 rubber, 185,000 miles, excellent condition. 717/539-8721.

1994 Chevy All Wheel Drive, 6.5 Turbo Diesel w/10' Flatbed Dump, 12,000Lb. GVW, Includes Factory Warranty, \$27,500. (717)739-2973.

1975 Mercedes cab and chassis, 25,000 GVW, good farm truck, \$1,800 w/ PTO or \$1,500 without PTO. (717)784-0250.

1975 White Roadboss Twin Screw Tractor, Formula 290 Cummins, 9Spd., PS, AC, Air Slide 5th, Wetline, Very Good Condition, \$5500. (610)287-0410.

1977 Cadillac Fleetwood Broughm, Body Interior Good, Engine Needs Work. \$550. (610)692-5871.

1977 Chevy dual wheels 12' stake body truck, runs good, inspected, \$1495. 717/734-3532.

1978 Fruehauf 28' dump trailer, spoke wheels, roll tarp, air tailgate, excellent condition. 717-524-2673.

1978 Int. flatbed, runs good, \$1,500 OBO. (610)588-2226.

1978 Mack F Model single axle w/sleeper, 237 Mack motor, 65K on rebuilt, 5-speed trans, Sheppard power steering installed 5/91, 11R-22.5 Michelins on Dayton hubs, airdryer, heated mirrors, extra pair Michelins on rims, maintenance records from new, good condition, solid dependable truck, \$4000 OBO. 717-566-0529.

1979 Chevy pickup shortbed, stepside half ton, full time four wheel drive, new tires, P/S, A/T, 350, V-8, looks and runs great, \$4,000 or BO. (908)479-6162.

1980 1-ton Chevy dump, \$3500. 410-531-6386; 301-596-9700.

1980 GMC Brigidere 10 wheeler, good condition, 15' of frame rail, Detroit diesel, low mileage. 717-786-4568.

1980 International 2050 grain truck, 16' Morgan grain body, 18 ton hoist, Detroit diesel engine, 5 speed trans., 2 speed rear, air brakes, 35,000 GVW, excellent condition, asking \$7,800. 717-786-1119 evenings.

1983 Ford F250 4x4, 8600 GVW, 4-speed trans, equipped w/7 1/2' western power angle snowplow, excellent work truck, \$4000. 610-383-7042 7AM-5PM weekdays.

1984 Dodge 350 V-8, 360, 4 speed, 9' flat dump, good condition. (410)329-6791.

1985 F150, 4x4, XL, nice condition, \$4,900. (717)626-8257.

1986 Dodge 350 w/8' flat dump, 360 4 speed, L package. (410)329-6791.

PRE-OWNED TRUCKS

- '93 F250 4x4, XLT V-8, A/OD, A/C, Work Ready
- '93 F350 4X4, CREW CAB V-8, A/OD, A/C, XLT
- '92 F350 12' STAKE DUMP 351, V8, 5 Spd., 16,000 Miles
- '92 F150 4x4, 4.9L, A/OD, A/C, XLT, 1-Owner
- '94 CHEVY K3500 S/CAB 4x4, DRW, Silverado, Diesel
- '94 GMC SONAMOA SLS Super Cab, 5 Spd, A/C
- '94 F150 SPECIAL 4.9L, 5 Spd., Only 5,000 Miles
- '93 GMC SLE V8, A/OD, A/C, 1Owner, 8,000 Miles
- '90 F250 SUPER CAB XLT V8, A/OD, 41,000 Miles
- '91 F150 4x4, XLT 4.9L, A/OD, A/C, 37,000 Miles

CARS

- '91 CHEVY BERETTA A/C, AT, Teal, 19,000 Miles
- '90 CHEVY BERETTA GTZ A/C, A.T., 30,000 miles
- '93 SATURN SLI AC, 5 Spd, Only 8,000 Miles
- '94 SABLE GS SEDAN V6, A/OD, Power Equipment & More
- '91 MERCURY CAPRI CONVERTIBLE A/C, 5 Spd, 1-Owner
- '94 CHRYSLER LEBARON A/C, 1-Owner, 14,000 Miles
- '94 LINCOLN TOWN CAR Signature Series, Loaded, 13,000 Miles
- '94 EAGLE TALON ESI A/C, A/OD, 11,000 Miles
- '92 LINCOLN TOWN CAR Jack Nickalaus Edition, Loaded
- '92 DODGE SHADOW ES A/C, 5 Spd, 1-Owner, 43,000 Miles

MPV'S

- '93 EXPLORER SPORT A/C, 5 Spd., Power Equipment & More
- '88 BRONCO II, XLT A/C, 5 Spd, 48,000 Miles, Winter Ready
- '93 GRAND CHEROKEE LAREDO A/C, 6 Cyl., A/OD, 36,000 Miles
- '92 JEEP CHEROKEE LAREDO 6 Cyl., A/OD, A/C
- '90 JEEP CHEROKEE 2 Dr., 6 Cyl., A/C, 5 Spd., 61,000 Miles
- '89 JEEP CHEROKEE SPORT 2 Dr., 6 Cyl., A/OD, A/C & More
- '92 EXPLORER 4 Dr., XL Pkg, A/OD, A/C, 40,000 Miles
- '91 AEROSTAR ALL-WHEEL DRIVE, XLT Extended Length, 36,000 Miles
- '93 WRANGLER SPORT 6 Cyl., 5 Spd., Soft Top, 1-Owner
- '92 WRANGLER ISLANDER 6 Cyl, 5 Spd., A/C, Soft Top

ENGLE-RISSINGER AUTO GROUP

Rt. 147 Just North of Halifax
Halifax, PA 17032
The Call's On Us 1-800-242-8075
1-717-896-3421

USED TRUCKS



'93 Dodge Club Cab D250 4x4, 5.9 or 360 V8, Auto, PS, PB, AM-FM, AC, Cruise, Tilt Wheel, 53,000 Miles, Local One Owner
\$17,900



95 Chevy 2500, 4x4 Ext-Cab Silverado, 8600 GVW, 350 FI, Auto with O/D, PS, PB, AC, PW, PDL, AM & FM Stereo Cass., Forest Green with Grey Cloth Interior, 3,000 Miles
\$24,900



95 Dodge 1500 4x4 Ext-Cab Laramie SLT 5.9 FI, Auto with O/D, PS, PB, AC, PW, PDL, AM & FM Stereo Cass, Rear Sliding Window, Met Green with Grey Cloth Interior, 10,000 Miles
\$25,700



93 Chevy 2500 4x4 Ext-Cab Silverado Short-Bed, 7200 GVW, 350 FI, Auto with O/D, PS, PB, AC, PW, PDL, AM & FM Stereo Cass., Two Tone Maroon & Sand Stone, 51,000 Miles
\$18,900

MARTIN'S AUTO SALES
1025 W. Main St., New Holland, PA 17557
(717) 656-6621

Financing Available

SS SAVE SS SAVE SS SAVE SS SAVE SS SAVE SS SAVE SS SAVE SS SAVE

1995 DODGE RAM T-300 PICKUP **18 AVAILABLE**

1995 DODGE DAKOTA CLUB CABS 2WD & 4WD **28 AVAILABLE**

1995 RAM T-300 CLUB CABS - 2ND & 3RD ROW SEAT AVAILABLE
HURRY WHILE AVAILABILITY LASTS

We Are One Of The Largest Volume Dodge Truck Dealers East Of The Mississippi

Volume Stocking Permits Volume Discounts!

Joe Dell's L&B **DODGE CHRYSLER PLYMOUTH**

"National Award-Winning Dealer"

ROUTE 422, ROBESONIA, PA. (215) 693-5855 **1-800-800-2623**

"Ask A Friend About Us"