

Take Exit 20B  
Off Of 83, 5 1/2 MI. West  
To Belmont Farm.



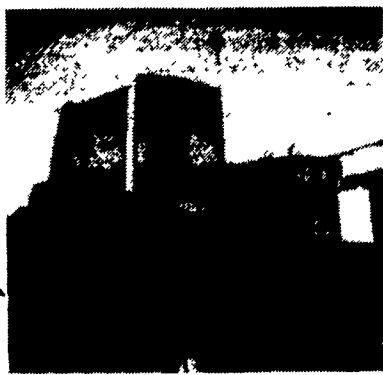
**Oliver 1850**

Gas, 2 Outlets, Live PTO, P.S.  
**\$3,800**

Also Available:

Oliver 1650, diesel, WFE \$4,250  
AC D19, gas, WFE, PS \$2,500

**410-833-9091**



**IH 1486**

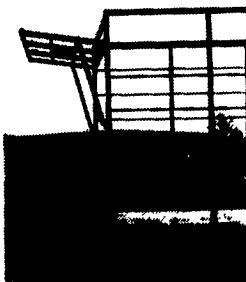
Cab, '81 Model, Dual PTO, Clear

**\$10,500**

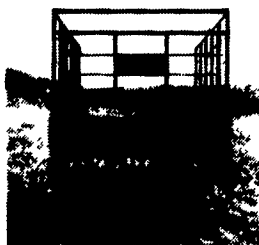
**(717) 532-8926**

**1 FARM EQUIPMENT**

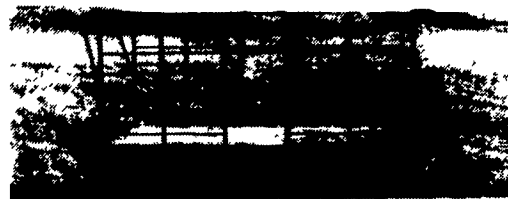
**DUTCH BROTHERS**



**Unique Rear Unloading**



**Options:  
Running Gears  
& Flat Beds**



- 18' x 8' inside
- 14 ga square tubing, for extra strength and long life
- Front and rear openings need only 38" clearance
- End gates made of extra heavy expanded metal, and spring loaded latches
- Beds built of all oak

**New Chain Release Side Opening**

- 3" x 8" main beams
- 2" x 5" cross member
- Nailed with galvanized nails
- Bolted with plated bolts
- Fabricated side rail for extra strength
- 8 ton gear
- 11L tires & tubes
- Extension tongue
- Built to last

**HAY SEASON SPECIAL**

**Dutch Brothers  
(717) 776-7465 or  
(717) 776-3363**

**YORK COUNTY FARM & INDUSTRIAL EQUIPMENT Co., INC**



Box 222 EMIGSVILLE, PA  
(717) 764-6412 OR (717) 764-5115

**TRACTORS**

- Ford 5610 Special II 62hp w/roll bar
- Ford 3000 gas
- Ford 2000 gas
- Ford 3930 45hp w/roll bar
- JD 16.9x38 hub duals
- Int. 886 w/partial cab, WF, dual remotes
- Int. 786
- Int. 656 w/WF
- Farmall Cub w/mid-mount mower
- Farmall M
- Farmall Cub w/Equip.
- Int. 154 lowboy w/mower
- 7700 Ford w/dual power
- Farmall H w/narrow blade
- Farmall A's w/Mid-Mount Mowers
- AC-B with Mid Mount Mower

- Ford 777 QT Loader
- Dunham QT Loader, fits JD utility
- A.C. - 6G Crawler Loader
- Cat 955H Crawler Loader

**TILLAGE & CULTIVATOR**

- Kewanee transport disc 15'
- Ford 4BT semi-mount plow, auto reset w/new 18" bottoms
- JD 4BT model A2000 semi-mount plow, 18" bottoms
- New Brillion 12' Cutipacker

**MISC.**

- New 3 pt. Fert. Spreader
- 3 pt. Stone Rakes
- 3 pt. Box Scrapers
- Regular & Heavy Duty 3 Pt. Scraper Blades
- Heavy Front Blades
- NI 323 IR picker
- Used Woods HD 315'15' bat wing mowers
- New Woods Rotary Mowers 5' to 15' in stock at special Prices. Buy Now & Save!

**LOADERS**

- 2810 Ford w/loader, Curtis cab
- Ford 3930 w/loader
- Int. 584 w/loader
- Jubilee Ford w/loader

New 3 pt 78" Snow Blower

1974 El Camino V-8, PS, PB

Large Selection of New Used & Reconditioned Equipment & Tractors

**MISC. USED EQUIPMENT & TRACTORS USED TRACTORS**

IH F706D

- Case 800D Tractor
- Satoh 650G w/L59 Mower
- Farmall Cub w/Mower and blade

**USED EQUIPMENT**

- JD 1219 Mower Conditioner
- IH 1190 9' Mower Conditioner
- IH 800 6R Planter
- Kuhn 200 Mower Conditioner
- Kuhn SC300 Mower Conditioner
- NI 353 Spreader
- NI 484 Round Baler
- IH 440 Baler w/Thrower
- IH 510 Drill 18x7
- Woods HD 315 Mower
- Gehl 1500A Round Baler
- 72" Manure Forks for 2250 loader
- Pull DISC Spreader
- NI Pull Type Spreader

Spring Auction - March 25, 1995

**BIGGS INCORPORATED  
190 Biggs Hwy., Rising Sun, MD  
410-658-5531**

**CASE III**



The Deluxe High Performance Model 1000 offers 20-30% faster speeds. The Patented Direct Drive Float Wheel System\* gives positive spacings, independent flotation, uniform soil preparation and depth control. Shown are optional Cushion Seats and Chrome Double Disc Shoe

**Mechanical Transplanter  
AMERICA'S FINEST**

"The transplanter with the features the farmer wants and buys."

- FOR SETTING**
- tobacco
  - sweet potatoes
  - cauliflower
  - peppers
  - celery
  - peppermint
  - broccoli
  - cabbage
  - strawberries
  - tomatoes
  - lettuce
  - nursery stock
  - Christmas trees
  - onions

**This Area Exclusive Mechanical Dealer  
Ask Us About These Other Mechanical Products**

- Mulch Layers
- Bed Shapers/Mulch Layers
- Mulch Planters
- Tunnel Layers



**KUHN THE KUHN CONNECTION KUHN**

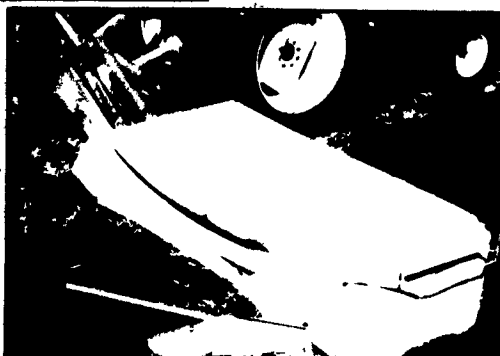


**Kuhn's Model 1011 Towed Wrapper**

When it comes to preserving and freshness in your valuable hay crop, nothing beats Kuhn's Silo-Matic bale wrapper. The Kuhn Towed Silo-Matic with Lift Arm stretches and then tightly seals plastic wrap all round the bale, preventing water seepage, temperature variation and mold development.

IN STOCK - ON SALE!

Model 1012 with Hydraulic Cut & Tie and Bale Drop Mat **\$12,990<sup>00</sup>**



**Survival of the fittest**

Farmers everywhere in the world compare all other disc mowers to Kuhn because Kuhn sets the standard that all the others follow. The GMD series of Multidisc Mowers features oval shaped discs to get through crops without plugging. The cutterbar drive-line is designed for perfect dynamic balance with minimum vibration. And the gearbox gears are helical cut for optimum lubrication no matter what angle the mower is cutting.

IN STOCK - ON SALE

GMD55 5 Disk, 6'7" Cut (1 Only) **\$4,190<sup>00</sup>**  
GMD66 6 Disk, 7'10" Cut (1 Only) **\$4,590<sup>00</sup>**



**Kuhn-Tough Reversible Plows  
Adaptable To Any Field Condition**

Kuhn's new 16" R65 Range Reversible plow is just the ticket for any tough field job. You'll save time and energy when you use the R 65 for spring or fall plowing. Hydraulic automatic reset for easy clearance of rocks and other obstacles automatically resets bottom at proper plowing depth.

Model 65 3 Bottom Roll over Plow with Auto-Reset Bottoms (1 Only) **\$9,250<sup>00</sup>**



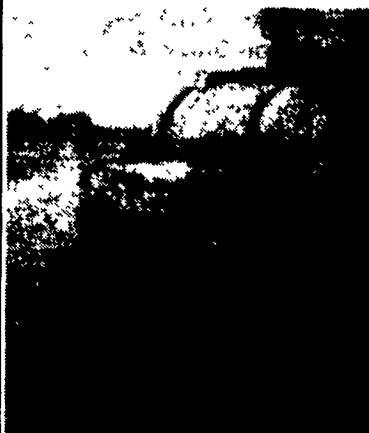
**Killer Tiller!**

**State-of-the-Art Soil Preparation**

Built to take on any job. From stubble cleaning to orchard cultivation, this is one tough tiller!

- ADJUSTABLE DEPTH - front mounted gauge wheels allow choice of working depths.
  - NO MAINTENANCE - all gear construction eliminates troublesome chains, downtime.
- IN STOCK - ON SALE!
- EL50N - 155 60 in. Cut, 50 HP Rating **\$2,495<sup>00</sup>**
  - EL35N - 155 60 in. Cut, 35 HP Rating **\$1,895<sup>00</sup>**
  - EL25N - 130 50 in. Cut, 25 HP Rating **\$1,495<sup>00</sup>**

**AG-AIR MIST SPRAYER  
The Closer You Look - The Better We Look**



**FRUITS & VEGETABLES**

Many producers/growers have sprayed their crops with Ag-Air Mist Sprayers. They have reported excellent results and in half the time in such crops as sweet corn, tomatoes, cabbage, onions, cucumbers, strawberries, peppers, melons, grapes, cranberries, raspberries, wild blueberries and edible beans. For vegetable fungicides and insecticides, they are using approximately 1-2 gallons of total spray per acre at swath width ranging from 40' to 60'. With vine crops such as melons, cucumbers, pumpkins and grapes, the Mist Sprayer will deposit spray droplets on the underside of the leaves. This is next to impossible with a conventional boom sprayer or aerial spraying.

With a Mist Sprayer there are no streaks or missed spots as in aerial spraying and 100% better control of the chemical and its target area with proper application and bordering.

IN STOCK: 55 Gallon 3 pt. mounted Cannon Sprayer with 5 Nozzle Head and Electric Shut Off **\$2,995**



SALE ENDS  
March 31, '95



**KUHN**