

For Sale 1979 F-350 Ford Truck with 11 ft Eby aluminum cattle box
66,000 original miles
\$4,500
717-949-2331

Farm Trucks From...

THE TRUCK PLACE



'93 CHEV. K3500 4X4

Crew Cab, Centurion, 6.5 Liter Turbo Diesel, Low Miles, 1-Owner

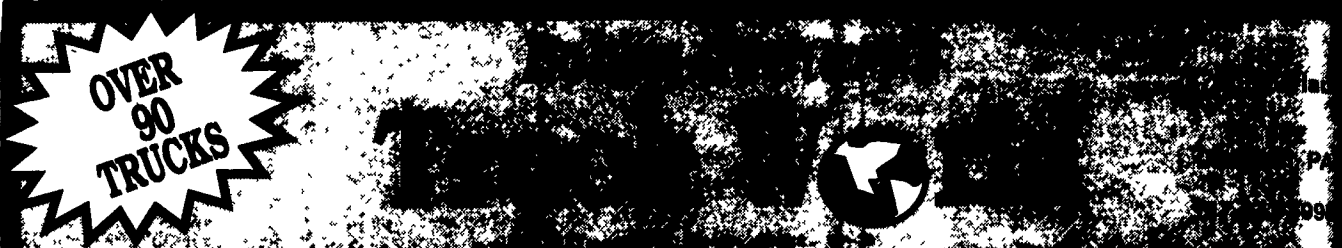


'95 3500 SERIES CHEVROLET

Cab & Chassis of Utility Body

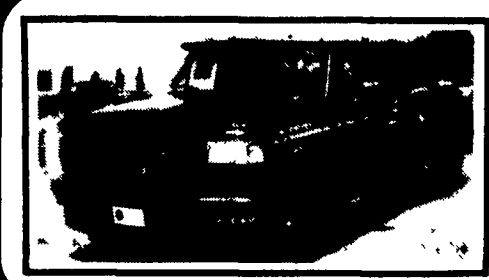
Frederick
The SUPERMARKET OF TRUCKS

(717) 274-1461 • PA (800) 222-5523
1505 Quentin Rd., Rt. 72 South, Lebanon, PA



<p>'93 FORD F250 7.3 Diesel, Auto, A/C, XLT, Loaded, Tan/Mocha, 60,200 Miles #F-308</p>	<p>93 CHEV. G-30 CUBE VAN 12 Ft. Box, 350 V8, AT, AC, 37,000 Miles, Like New #C-232</p>	<p>94 FORD CREW 4X4 351 Auto, Long Bed, White, 16,800 Miles #F309</p>	<p>93 DODGE D350 DUALY Cummins Diesel, AT, PS, PB, Extra Fuel Tank, Ready To Do Your Towing #D-127</p>
<p>89 FORD F350 SUPER CAB, DUALY 460 V8, AT, AC, Cruise, PL, PW, Tilt, Only 43,000 Miles #F294</p>	<p>89 MITSUBISHI NPR 14 Ft. Stake Body w/Liftgate, AT, Turbo, Diesel, PS, PB, 33,000 Mi., 13,000 GVW #M107</p>	<p>-88 CHEV K-1500 4x4 w/Power Angle Plow, AT, AC, V8, Ready For Snow, 2 To Choose From #C222</p>	<p>80 INT. DUMP W/ PLOW 360 Gas, 26,000 GVW, 12 Ft. Blade Ready for Snow, #I-108</p>
<p>89 CHEVROLET K3500 CREW CAB 454, Auto, AC, PW PL Cruise, Dually Silverado, Black/Silver, #C233, 52300 Miles</p>	<p>81 FORD F350 DUALY 400 CID, Stick, Great Farm Truck, Bronze, #F-302 \$3,600</p>	<p>93 CHEV C3500 Hi-Top Walk-In Utility Body, 350 V8, AT, AC, Only 6,800 Miles #C-239</p>	<p>94 FORD SUPER DUTY Chassis w/Flatbed, AT, AC, 7.3 Turbo Diesel, XL, Trim #E-303</p>

Mark Vills • Pickups • Broncos • Stake Body • Crew Cabs



Great Selection F250's & F350's Supercab & Crew Cab
Turbo Diesels In Stock

'95 FORD F250 4x4
Supercab, 351 V8, AT, Trailer Pkg., #6549
SUPER SALE PRICED AT \$22,799

'95 FORD F250 HEAVY DUTY
7.3 Turbo Diesel, 5-Spd., Air GREAT WORK HORSE #6295

'95 FORD F350 4X4
7.5 Gas, AT, Cruise, Air, Cass. #8534
SUPER SALE PRICED AT \$23,999

'94 FORD F350 STAKE/DUMP
Great for Landscape Business #4982
SUPER SALE PRICED AT \$22,499

MERCURY VILLAGER
15 to Choose From
STARTING AT \$20,000

FORD AEROSTAR
12 to Choose From
STARTING AT \$16,000

FORD WINDSTAR
15 to Choose From
STARTING AT \$19,000

'94 E350 SUPER CLUB
15 Pass Van, Only 16,000 Mi., 8 Cyl., AT, Loaded #P2122 Was \$24,999
SUPER SALE \$19,999

'93 GMC SONOMA SLE
6 Cyl., 5-Spd., Only 34,000 Miles, #6311A, Was \$9,999
SUPER SALE \$7,999

'93 FORD F150 4X4
Supercab, 31,000 Miles, 302, Auto, #P2061 Was \$21,999
SUPER SALE \$18,999

'92 FORD BRONCO
(Eddie Bauer) 4WD, Loaded, #6521A, Was 19,999
SUPER SALE \$19,299

92 GMC SIERRA SLX
6-Cyl., 5-Spd., Air, #6198A, Nice Truck, Was \$13,999
SUPER SALE \$11,999

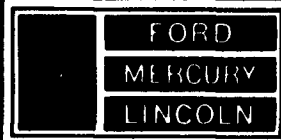
92 CHEV K2500 4X4
351 V8, AT, Silverado Pkg., 42,000 Miles, #6467A, Was \$18,999
SUPER SALE \$18,340

91 FORD F150 SUPER CAB XLT Pkg., 5 Liter V8, AT, Fiberglass Cap., Loaded #5093A, Was \$14,999
SUPER SALE \$13,616

92 FORD EXPLORER
Sport, 2-Door, 46,000 Mi., 1-Owner-Local Trade, Was \$17,999
SUPER SALE \$16,899

91 FORD EXPLORER
Sport, 2-Door, air, 42,000 Mi., 1-Owner, Local trade, Was \$18,499
SUPER SALE \$15,199

Unless the Sheehy Emblem is on Your Car or Truck...You Probably Paid too Much!



LEBANON

-20th & CUMBERLAND STS. - RT. 422 WEST
9-9 DAILY; 9-5 SATURDAY · SHEEHY HOTLINE · (717) 272 7671 OR 533 5293

PARTS DEPT OPEN
DAILY 8-5
SAT 8-12
717 273 3168

Mystiques • Cougars • Continentals • Town Cars • 4x4s • Rangers

Contours • Aspires • Diesel Pickups • Mustangs • Thunderbirds

GRAHAM MARQUIS • S17X • SUBARU • PLYMOUTH • SIERRA • CUSTOM VANS