

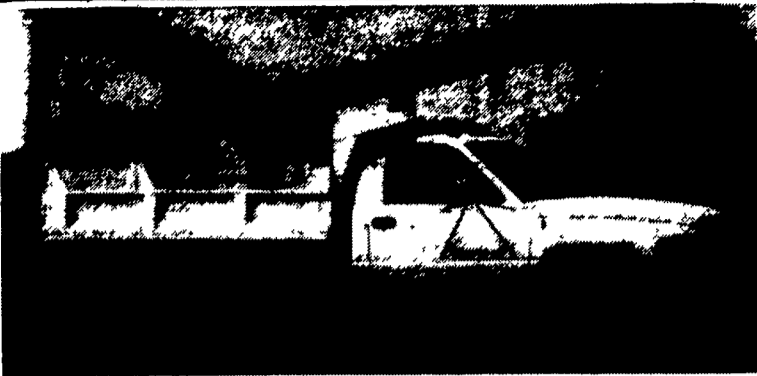
Quarryville

Dodge & Dodge Trucks • Chrysler • Plymouth
717 786-8220

1-800-781-8220

Rt. 222, 1 mile North
of Quarryville, PA

In The ♥ Of
Lancaster County



**1995
DODGE
RAM 3500
CHASSIS CAB
4X4**

• 139" WB, • 5-Speed Heavy Duty Manual Transmission
• 8.0L Magnum V-10 MPI Engine • Tires: LT215/85R16E AT(6)
with HEIL MARAUDER 8'x2/3 Yd. Dump Body 1/2 Cab Protector
with Screen Window DM Hoist, PTO, Underbody Tool Box Mounted

List Price \$28,329 **SALE \$25,490** Save \$2,839

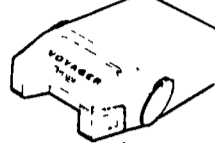
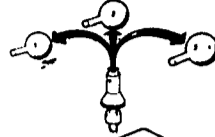
FREE Meyer Snow Plows

w/Purchase of 1995 4x4 Diesel P.U.'s

35 TRUCKS & TRAILERS

TRAILER HITCHES

Quality & Price



- ★ Free Catalog
- ★ MC/Visa/Disc
- ★ UPS Shipping

**Weaver
Distributing**

1-800-Weaver-D
1-800-932-8373
Fax 717-865-2667

CASH FOR USED DIESEL TRUCKS!

- WE NEED 3/4 TON TO ONE TON:**
- FORD DIESELS
 - SUPERCABS
 - CREW CABS
 - DODGE CUMMINGS
 - 2WD or 4x4
 - DUALIES
 - DUMPS
 - UTILITY BODY
 - FLAT BEDS
 - CAB & CHASSIS
 - SUPER DUTIES

LOW MILEAGE ONLY PLEASE

Before you sell or trade your diesel
in somewhere else for **LESS.**

CALL US!

**We Pay More for Used Diesel
Trucks Than Anyone.**

TRY US!

717-949-2000

Ask for
Smoky or Kay



RD 7, Box 406
Lebanon, PA
17042

SS SAVE SS SAVE SS SAVE SS SAVE SS SAVE SS SAVE SS SAVE

1995 DODGE RAM T-300 PICKUP



18
AVAILABLE

1995 DODGE DAKOTA CLUB CABS 2WD & 4WD



28
AVAILABLE

Including
Hard To Get
4x4's

**We Are One Of The Largest Volume Dodge Truck
Dealers East Of The Mississippi**

Volume Stocking Permits Volume Discounts!



Joe Dell's

L&B

DODGE
CHRYSLER
PLYMOUTH

"National
Award-Winning
Dealer"

"Ask A Friend About Us"

ROUTE 422, ROBESONIA, PA. (215) 693-5855

1-800-800-2623



- #1945-1994 Ford E350, XLT, 15 Pass, 25K
- #1944-1994 Ford E350, XLT, 15 Pass, 35K
- #1946-1994 Chev G30, Beauville, 12 Pass, 18K
- #1943-1994 Dodge B150, SWB, 8 Pass, 13K
- #1938-1994 Ford E150 XLT, 8 Pass, 23K
- #1931-1994 Ford E150 XLT, 8 Pass, 23K
- #1878-1994 Chev Astro CS, 8 Pass, 32K
- #1926-1993 Ford E350 XL, 15 Pass, Diesel, 46K
- #1927-1993 Ford E350 XL, 12 Pass, Diesel, 56K

- #1939-1993 Ford E350 XLT, 15 Pass, 29K
- #1940-1993 Ford E350 XLT, 15 Pass, 24K
- #1915-1992 Chev G20, Beauville, 8 Pass, Diesel, 42K
- #1947-1992 Chev G20, Beauville, 8 Pass, 25K
- #1914-1992 GMC G25, STX, 8 Pass, 31K
- #1879-1992 Chev G30, Sportvan, 12 Pass, 50K
- #1924-1991 Chev G30, Beauville, 12 Pass, 72K
- #1901-1991 Ford E250 XL, 12 Pass, 84K
- #1933-1990 GMC G25, STX, 8 Pass, 74K



1994 MITSUBISHI FH100
16' Box w/lift gate, 5.8 turbo diesel, Allison auto, Like New, 6,500 K #1917



1989 FORD LN 8000
16' dump, 7.8 turbo diesel, 5 speed + 2 speed, 30,000 GVW, 65,000 K, Extra Clean #1906

FOUR WAY AUTO SALES

770 West Main St., New Holland, PA 17557

717-354-3199



USED
EQUIPMENT

BODIES

- (2) 12' Eby Cattle Bodies
- 15' Eby Cattle Body
- (2) 20' Eby Cattle Body
- 21' Eby Cattle Body

HAY BODY

- 1989 Eby 24'x8' Alum.
Flatbed Body w/ Cab
Rack

GOOSENECKS

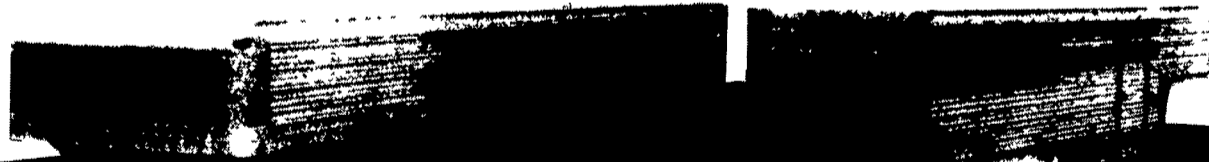
- 1990 Wil-Ro 20'x6'x6"
- 1982 Eby, 20'x8' with
Rear Ramp

M.H. Eby, Inc.

1194 Main Street (Route 23)
Blue Ball, PA 17506
(717) 354-4971 (800) 292-4752
FAX (717) 355-2114

4435 State Route 29
West Jefferson, OH 43162
(614) 879-6901 (800) 752-0507
FAX: (614) 879-6904

Anything Less Isn't Good Enough



If livestock is your business, Eby Gooseneck Trailers include these features to protect the livestock you transport:

- Durable all-aluminum construction with less weight for more payload
- Axles, wheels, tires and brakes that are designed to carry the weight the trailer will hold
- Gates and doors designed for easy loading/unloading
- Proven post and slat design to control airflow and easily close up for winter conditions
- Aerodynamic design to improve fuel economy

Eby Gooseneck Trailers are available in lengths from 12 to 32 feet with a choice of widths and inside heights. We offer every custom option, including stainless steel front end for great looks.

Whatever kind of livestock you transport, you can rely on EBY products to do the job right.



M.H. EBY, INC.

1194 Main Street (Rt. 23) • Blue Ball, PA 17506 • 800/292-4752 • 717/354-4971 • FAX 717/355-2114
4435 State Route 29 • West Jefferson, OH 43162 • 800/752-0507 • 614/879-6901 • FAX 614/879-6904

1980 International 2050 Grain Truck

16' Morgan grain body, 18 ton hoist, Detroit diesel engine, 5 speed trans., 2 speed rear, air brakes, 35,000 GVW, excellent condition, asking

\$7,800

717-786-1119
evenings

• Stainless Steel 2
Compartment Fertilizer
Tender Box, 8-10 ton
capacity, skid mount,
adj. rear discharge
auger, good condition

- 1973 Ford Louisville
LN800 liquid delivery
truck 534-4BBL, 10
speed Roadranger
dual 800 gallon poly-
tanks w/3" Scot pump.
- 1974 Fruehauf tub
type dump trailer, 30'
frame, 28' dump body,
3rd axle is lift axle,
11x24.5 rubber.

**All good condition
(717) 354-4996**