

30 COMPUTERS

Computer Sales & Service. Guaranteed repairs and upgrades. Specialized tutoring available. JOHN LINDINGER 717-862-1015

2 cyl. Wisconsin motor model TDF. (410)329-6791

(2) Solar heat units, 1 hot water GE vacuum tube w/8 panels, plus pumps and controls; Hot air w/8 panels, blower unit and controls. \$1500/ea 908-453-2088.

30 Mercury vapor light fixtures. 1000 watt, 480 volt, used. Reasonably priced. Mellinger Manufacturing Company, Inc. (717)464-3318.

3-axle N/C milling machine, 24 auto tool changer, table travel 10x20", tape, tooling and manual, \$1,500. (717)656-6189.

50' New Windmill Tower, No Bolts \$350 OBO; Commercial Sign Maker, All You Need to Get Started, Good Shape. \$1275. Getting Old LanCo (717)656-2186.

Onan belt drive generator 250 Volt, direct current, 10KW 2500/3000 RPM \$300 OBO. 610-367-7210 after 12.

American Floor Sweeper, electric, self-propelled, 48"W, model 2000B, \$750. 717/354-3105.

New shuffleboard tables, upholstery on sides, \$250. 717-768-3646 5:30pm. or write Elmer Lee Lapp, 275 Blank Rd., Narvon PA 17555.

8' split Locust fence posts, \$3.50 each. 717-687-8440.

LIVE GAME FISH



Fingerlings and Adults, Large and Small Mouth Bass, Spotted and Rock Bass, Bream Crappies, Trout, Channel Cats, Bullheads, Walleyes, Perch, Minnows, Northern Pickers, Muskies, Red Gills, Mulletts, Carp, Eels, Turtles, Frogs, Israeli Carp. Also Aquatic Plants and Water Lilies. COLORFUL CATALOG \$2.00

Truck, Air and Parcel Post Delivery ZETTS FISH HATCHERIES DRIFTING, PENNA. 16834 Phone: 814-348-8387

WOODLOT HANDLING EQUIPMENT:

New & Used Fuelwood Processing Eq. Brute Splitters, Processors & Conveyors. Island Skidding Winches. Norka Loaders & Grapples. Peavey Logging Tools. Most Models in Stock. Ready to go.

(410) 329-6791

Carl Neutzel Services, Inc.

32 MISCELLANEOUS

10" Delta table saw, 10" AMT table saw, \$350/each OBO; 3hp Quincy air compressor w/9hp Honda engine, \$1000. 717/334-6267 6-8pm.

Heat With Waste Oil Turbo Z Series Free Air Applications



90,000 - 260,000 BTU Units
10 years combustion warranty.
A safe way to dispose of your waste oil.
Over 13 years experience.
Electronic air, Fuel control modules give dependable performance.
Prices starting at \$2,195.00

Power Systems Electric, Inc.
(717) 933-5617

Dayton 1 ton 3hp chain hoist (410)329-6791

Eshland Coal Gun automatic stoker boiler w/self-feeding auger and hot water coil. 260,000 BTU, new cost \$8,000, excellent condition, \$1,250. (717)687-7521

Farm Toys-Collector Series. Show Tractors, Pedal Tractors, Trucks-for sale at all times. Visit our large display during business hours. Wengers Farm Machinery, Inc., 251 S. Race St., Myerstown, PA 717/866-2130

FOR SALE Used desks, files, chairs, drafting table, blue print files, fireproof files, etc NOLT'S Ephrata, PA 717-859-1617

Gas Boy gas pump (410)329-6791

GENERATOR SET. 95KW-480, 240, 120, turbo diesel w/fuel tank, 77 hrs., \$6,800 1-800-543-3833 Eddie

Generator Winco 6000 watt, 230 Volt, 3-phase, 120 Volt, 2 cylinder Wisconsin engine, electric start Phone 610-856-7580 after 5

Meyers mini tailgate salt spreader, 12 volt electric. (410)329-6791.

Miller 200LE AC-DC welder with 2 cyl Onan. (410)329-6791.

Milling Machine, Cincinnati #3, vertical and horizontal, good condition, \$3800. 717/354-3105.

Morso air tight wood stove. Model 1125. Heating capacity approx. 10,000 cu.ft. like new. Screen included for use as fireplace, \$300 OBO. Lancaster Co. 717-733-8007 after 4PM. NO Sunday calls

Articare 2 door sideXside reach-in freezer; Norris milk dispenser; Starrett Corp. ice storage cabinet, 380 lb. capacity; Manitowac 400# ice machine; Rosstemp and Scotsman ice machines. All guaranteed. Plus used wringer washers, automatic washers, dryers, refrigerators, and color TV's. LESHER'S APPLIANCES. Lenhartsville, PA 610-562-8577.

Signode Banding Machine, auto. 1/2" steel banding, \$2500. 717/354-3105.

Snowblowers: 10hp and 7hp. (410)329-6791

Tig Welder, 300A, Lincoln Idealarc, AC & DC, \$2250 717/354-3105.

Turret Lathe, W/S, 20" swing, w/motor, complete, \$1250. 717/354-3105.

Two L model Gravleys, both elect start, two 30" mower decks, one 48" plow cultivator, sulkey chains, \$500 (717)685-2244.

Unipunch and Stripit, 1 1/2" Wx8"D \$95, 2 1/2" Wx8"D \$200, 2 1/2" Wx8"D \$250, all like new. 717/354-3105.

Used fiberglass carriage, brown carpet, key switch, good cond., \$2,500 OBO 717-768-3646 5:30pm. or write Elmer Lee Lapp, 275 Blank Rd., Narvon PA 17555

Used Meyers snow plows, 7 1/2' and 8' (410)329-6791

WANTED: Original floor, grainery boards, 2" flooring, barn beams, tobacco sheds, siding (717)229-2806. mobile 717/880-4549.

WANTED: Used tools and machinery. Buy, Sell, Trade, Consign or Finder. B.J. TOOL & SUPPLY, RT 422W, Myerstown, PA. 1-800-772-9845.

WANTED: Used shaper, fair condition, hyd. motors and pumps, power unit, 60hp. 410-820-2191.

WATKINS DELIVERS! Quality spices, extracts and more. Delivered right to your door. For your free catalog, call Independent Representative: Brian Oerman: 800-206-1880.

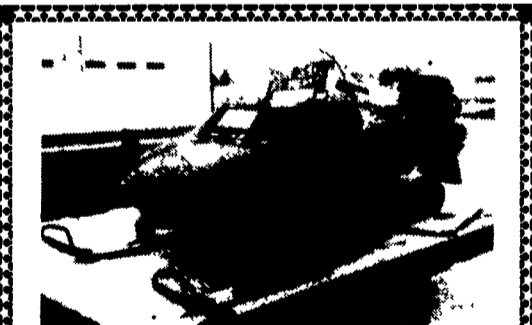
W.E.Shipply metal lath, 8" swing, 96" between centers. Has turret tool post and tooling, \$800 OBO. Also, acetylene and oxygen tanks, \$150/ea OBO. Proof of ownership included. Refilling available Lancaster Co 717-733-8007 after 4PM NO Sunday calls.

Windmill (Aermotor) water pump, eighteen 30" blades, 7 vane, no tower, \$300. (717)685-2244.

33 RECREATIONAL VEHICLES



1987 Chris Craft Sea Hawk, 220 HP Mercury Laser motor, two captain chairs, excellent fishing boat, stainless steel prop. \$16,000 or best offer
717-354-5920 or 354-4981
ask for Marvin or Elwood



1989 Safari GLX Ski-doo Very Low Miles, Exc. Cond. Good family snowmobile, reverse, electric start \$3,200 obo
(717) 354-5920

11 1/2' Pickup slide in camper, Coachman, all utilities, garage kept, travel ready, \$2500 OBO 610/759-0230.

20' camping trailer, nice condition, \$1295 717-244-9391 anytime.

Blue Bird 36' motor home, Caterpillar diesel engine, includes gas range, refrigerator, microwave, bathroom w/shower, Kabota diesel generator furnace, AC. 703-955-2677 after 7PM.

32a ANTIQUES

1940 Chevrolet 4 Door Custom Deluxe, 57000 Original Miles, Excellent Condition, \$6500 (410)928-5279 After 7PM.

1941 Model A John Deere Tractor, hand start, original, in good condition, asking \$1450 Call 609/884-0820.

1959 Edsel, 2-door, HT, \$1,800 Chicago Cottage pump organ, \$600. (814)944-0818

Antique Manure Spreader, Over 100 Years Old, Wooden Web, Good Shape, Called the Maple-leaf. (412)253-4500

Oliver Super 88 Diesel, Excellent Condition, 1 Owner. (717)742-7039

1971 L900 Ford, low mileage, gas, takes 16" body, \$3,500 1952 Ford F-7 rolling chassis, many parts (609)259-2431

1972 Chevy 90 series, tandem dump, 238 Detroit, 13 speed, 38 rears, 18 front, cab, needs repairs due to rust, \$5000 717-437-2640

1972 Ford rollback, 1975 International rollback, 1989 Scavia Roll off w/75,000 lbs. rudco hoise, (like new condition), 1981 MR Mack, 1974 RD Mack w/block body; 1973 DMA Mack long wheel base, tri-axle, 1972 Mack tri-axle dump, 1986 Ford F350 wrecker w/diesel motor Several tow motors for sale. Truck parts for sale, transmissions, motors, etc. 610-286-5172; 717-354-8946.

1973 Mack U600, single axle, dump truck, 250 engine, 10 speed trans, pintle hook, excellent condition, \$9,500 OBO. (610)932-5270

1974 Ford L750, 1160 CAT diesel, 13 speed O.D., air seat, good condition, \$5000 OBO. 610-273-9635.

1975 Mercedes cab and chassis, 25,000 GVW, good farm truck, \$1,800 w/PTO or \$1,500 without PTO (717)784-0250.

1976 International dump truck, DT466, 5-speed, 2-speed rear, power steering, 10' dump body, very good condition, \$13,000; 8-ton general tandem axle tag-a-long, recent tires, new deck, \$1500 610-255-5394.

1977 Cadillac Fleetwood Broughm, Body Interior Good, Engine Needs Work. \$550. (610)692-5871.

1979 Chevy pickup shortbed, stepside half ton, full time four wheel drive, new tires, P/S, A/T, 350, V-8, looks and runs great, \$4,000 or BO. (908)479-6162.

22' flatbed dump, \$4300 717/354-3105.

34 AUTOS

1967 Ford Bronco for Parts or Restoration, Frame Excellent, Sandblasted and Primed, Many Other Parts. Asking \$600 (717)538-1771.

Fords, Chevys, Etc. Over 100 available every Wednesday 6:30 PM. YORK PUBLIC AUTO AUCTION. Exit 12 Interstate 83. tags and transfers available w/proof of insurance. 717-266-5634.

35 TRUCKS & TRAILERS

12' Hury aluminum cattle body, very good shape, \$2,250 OBO (410)526-6892

18ft. Thermo King refrigerated van body, good cond., diesel operated. \$3,500. 717-597-9761.

1960 Diamond T, T-5000, 6cyl. gas, 5sp.-2sp., air-brakes, 14ft. wooden grain body, good cond., \$2,200. GM 6.2 liter diesel, complete, low mileage, rebuildable, \$600 OBO. 1200 gal 3 compartment, truck mounted fuel tank w/accessories, clean, no rust, could be used for water, \$600 OBO Small safe w/wheels approx. 2x2x3, \$150. 609-597-3538.

1962 Ford truck, 26,000 GVW, needs some work, \$1,000 1966 Int. truck, 26,000 GVW, good condition, \$1,500. 1978 Ford van 5,000 GVW, needs some work, \$500. 1975 Int. Omnibus, good condition, new tires, \$1,000 (717)677-8105 days, (717)677-7682 nights

1971 L900 Ford, low mileage, gas, takes 16" body, \$3,500 1952 Ford F-7 rolling chassis, many parts (609)259-2431

1972 Chevy 90 series, tandem dump, 238 Detroit, 13 speed, 38 rears, 18 front, cab, needs repairs due to rust, \$5000 717-437-2640

1972 Ford rollback, 1975 International rollback, 1989 Scavia Roll off w/75,000 lbs. rudco hoise, (like new condition), 1981 MR Mack, 1974 RD Mack w/block body; 1973 DMA Mack long wheel base, tri-axle, 1972 Mack tri-axle dump, 1986 Ford F350 wrecker w/diesel motor Several tow motors for sale. Truck parts for sale, transmissions, motors, etc. 610-286-5172; 717-354-8946.

1973 Mack U600, single axle, dump truck, 250 engine, 10 speed trans, pintle hook, excellent condition, \$9,500 OBO. (610)932-5270

1974 Ford L750, 1160 CAT diesel, 13 speed O.D., air seat, good condition, \$5000 OBO. 610-273-9635.

1975 Mercedes cab and chassis, 25,000 GVW, good farm truck, \$1,800 w/PTO or \$1,500 without PTO (717)784-0250.

1976 International dump truck, DT466, 5-speed, 2-speed rear, power steering, 10' dump body, very good condition, \$13,000; 8-ton general tandem axle tag-a-long, recent tires, new deck, \$1500 610-255-5394.

1977 Cadillac Fleetwood Broughm, Body Interior Good, Engine Needs Work. \$550. (610)692-5871.

1979 Chevy pickup shortbed, stepside half ton, full time four wheel drive, new tires, P/S, A/T, 350, V-8, looks and runs great, \$4,000 or BO. (908)479-6162.

22' flatbed dump, \$4300 717/354-3105.

1960 International 2050 grain truck, 16' Morgan grain body, 18 ton hoist, Detroit diesel engine, 5 speed trans., 2 speed rear, air brakes, 35,000 GVW, excellent condition, asking \$7,800. 717-786-1119 evenings.

1981 Chevy C-30, Reading enclosed tool body, good running truck, \$1,800. (717)284-4938.

1983 Ford F250 4x4, 8600 GVW, 4-speed trans, equipped w/7 1/2" western power angle snowplow, excellent work truck, \$4000 610-383-7042 7AM-5PM weekdays.

1984 Dodge 350 V-8, 360, 4 speed, 9' flat dump, good condition. (410)329-6791

1984 R Model Mack, 350 Mack motor, 13-speed direct trans, air ride suspension and cab, new turbo, new water pump, Jake brake, air dryer; Parker 22' aluminum dump trailer, new roll tarp fitted water tight, new brakes, new tires \$26,500 OBO 610-693-6233.

1986 Dodge 350 w/8' flat dump, 360 4 speed, L package. (410)329-6791

1986 International S1954, single axle tractor, 466 diesel engine, air brakes, 7 speed, good condition, \$8,900. (717)445-4410.

1986 Mack w/cattle body, diesel, w/new Eby aluminum bed, 22'x102W, \$16,000. (703)297-1707.

1988 Ford pickup, 4x4, Lariat, 5 spd., \$6,000. 410-429-1927 or 410-857-7102

1988 Trailmobile 28' Flat Trailer, Excellent Condition. (717)469-0834

1991 Chevy X cab, heavy duty 2500 series, 4x4, 454, 4-speed, \$14,000 717-925-5152.

1991 Ford F-250 4x4, 460 club cab, 62K, XLT Lariat, black au/tr, \$16,000. Must Sell. New York 518/678-9935.

1992 UD 2300 210hp, 6-spd., low pro., 19.5 rubber, 185,000 miles, excellent condition 717/539-8721

1993 Ford F Super Duty, cab & chassis, good condition 717/776-7806

1994 Chevy All Wheel Drive, 6.5 Turbo Diesel w/10' Flatbed Dump, 12,000lb. GVW, Includes Factory Warranty, \$27,500 (717)739-2373

33' gooseneck flatbed trailer, good shape, \$3,500 Will trade for smaller trailer. (610)932-8986.

40' Monon FRP walking floor trailer, 85 cu.yd., roll tarp, \$18,000; 45' Monon FRP open top trailer, air-ride slider, \$7500 610/383-6818.

44' Heavy Duty Drop Deck Trailer, Road Ready. (717)768-8595.

48' drop deck, air brake trailer, 25" high, 215/75R17.5, good condition, \$7,800. 6V71 engine, GM 478 for parts. 18 ton tag-along tilt pop trailer 750x15 Michelin tires, \$2,900, give offer. (717)866-2091

'70 Ford, 18' body, rollup door, electric lift, excellent condition, \$1,900 (215)885-1032

7' lift gate, electric and hydraulic, 40" platform 2 piece, 48" lift, good condition, \$800 (717)862-3427

'86 Jeep Comanche 4x4, new tires, new paint, new inspection, 3/4 ton, \$2,800 OBO. Call Sunday after 6pm, (717)285-3269.

'89 Ford F250, 4x4, XLT, A/T, V-8, HD, \$9,500. (301)898-7426.

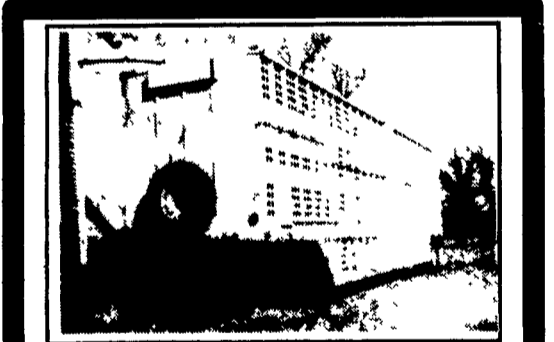
89 Ford F350 dually super cab, 460 V-8, auto, AC, fold-down hitch, spare tank, loaded, 47,500 miles, \$12,000; 89 Traillette 38' gooseneck, 6-horse van, AC, living quarters, roof rack, box stall, ready for carriage/harness, \$20,000 302/654-4124

'90 Dodge LE 250, 3/4 ton, 318 EFI, auto, PB, PS, PW, PDL, cruise, tilt, air, AM-FM cassette, 7,400 GVW, 2 tone brown, 1 owner, excellent condition, \$9,600 717-733-2873

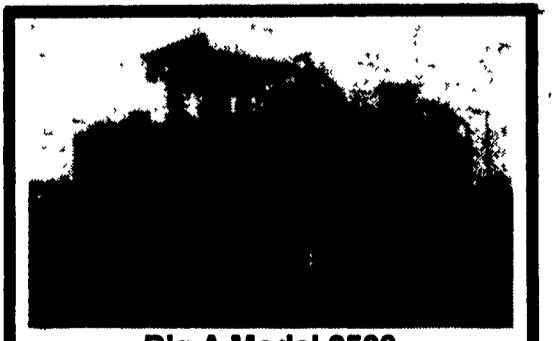
'91 Dodge LE 350, 15 passenger van, 360 FI, auto, PS, PB, dual air & heat, privacy glass, 48,000 miles, excellent condition, \$11,900. 717-733-2873

Fuel trucks, two International gas engines, steel tanks, 2000 gallons and 3000 gallons, very good condition, \$1,800 each or best offer Delaware County, (610)485-3584. (610)485-5174

Int. Loadstar 1890 flatbed dump truck, 5-speed trans, 2-spd axle, air brakes, 345 engine overhauled, excellent tires, \$3250 717/626-6200.



1976 Merrit 48' Double Deck Pot
Extra Nice for Year \$7,500
Winchester, VA.
(304) 878-6653 evenings



Big A Model 3500
Liquid waste applicator, 555 Cummins engine, 5 speed auto. trans., (new rebuild), new paint, 2,200 gal pres-vac tank, with 4 shank chisel for injection, RoVac R260 vac pump, tires 50%, runs exc., no ac.,
\$24,500
Lanc. Co. - No Sunday Calls
(717) 626-9050