

**Public Auction Register**

Closing Date Monday 5:00 P.M.  
of each week's publication

MON. MAR 18- 10AM  
Farm equip. 1 mile S of  
Loysburg off Rt 36 towards  
Snake Spring, Bedford Co.,  
Pa. Philip E Steele, seller  
Brian W. Fipard, auct

MON. MAR. 20 - Tractors,  
farm equip, 169 N Grof-  
dale Rd., Leola, Pa. Con-  
signment Auction by M M  
Weaver & Sons. Aaron E.  
Martin Auct. Service.

MON. MAR. 20 - 9:30AM  
Trucks, tractors, farm  
equip, milking equip.  
Located along Rt. 194  
between East Berlin, Pa.  
and Dillsburg, Pa. York Co  
Rineway Dairy Farm, sell-  
er. Rentzel's Auction  
Service.

TUES. MAR. 21 - Vern-Lee  
Holsteins Complete Dis-  
persal Russell Kline &  
Family, owner. McVey-  
town, Pa. Blizzard Date  
Mar 24.

TUES. MAR. 21 - 9AM  
Quilt, craft & buggies A&C  
Diffenbach Auction, Inc  
100 W Jackson St, New  
Holland, Pa

TUES. MAR. 21 - 10AM  
Farm machinery. Take Rt  
222 S. of Quarryville, Pa.  
app 2 mi turn E. on Solan-  
co Rd to first farm on left  
By Carl G Troop Kreider,  
Kline & Good, aucts

TUES. MAR. 21 - 7PM  
Feeder Pig Sale, Westmin-  
ster Livestock Auction,  
Westminster, Md

WED. MAR. 22 - 9AM Quilt  
& Craft A&C Diffenbach  
Auction, Inc 100 W Jack-  
son St, New Holland, Pa

THURS. MAR. 23 - Spring  
Aqua Holsteins Milking  
Herd & Bred Heifer Disper-  
sal Freeman Evans, own-  
er Chester Springs, Pa  
(130 Head) Managed by

**The Cattle Exchange.**

THURS. MAR. 23 - Nelson  
Wengert, Green Village -  
100 head of sire identified  
holstein cows, free stalla nd  
tie-up trained, DHIA  
records. Managed by  
Kling's Auctions Inc., Land-  
isburg, Pa. 17040  
717-789-3883

FRI. MAR. 24 - Sensenig's  
Spring Consignment Sale.  
Cumb Co., Pa. Traveling  
I-81 take Exit 11 (Newville)  
Follow Rt. 233 S. to Rt.  
174. Take Rt. 174 W to  
sale Approx 2 mi. off I-81.  
Farm equip & misc. items  
Melvin Sensenig, sale  
manager.

FRI. MAR. 24 - 1:30PM

State Graded Feeder Pig  
Sale. Carlisle Livestock  
Market, Inc., Exit 12 off I-81  
turn South then left onto  
Alexander Spring Rd.,  
249-4511.

FRI. MAR. 24 - 9AM & SAT.  
MAR. 25 - 9:30AM 4th  
Annual Whitley Co. Antique  
Tractor Auction, Whitley  
Co. 4-H Fairgrounds, Col-  
umbia City, IN. Donald R.  
King, auct.

FRI. MAR. 24 - 11AM  
Woodlow registered Hols-  
tein herd dispersal. RHA  
21,689 Milk 801 Ft. 9 ani-  
mals scored very good, 110  
head. Symrna Rd., Gap,  
Pa. John U. & Rachel Glick.  
Petersheim, auct.

FRI. MAR. 24 - 2PM & SAT.  
MAR. 25 - 8:30AM 1200  
lots of books & Ephemera.  
At Horst Auction Center, 50  
Durlach Rd. (Corner 322 &  
Durlach Rd., W. of Ephra-  
ta), Lanc. Co., Pa. Horst  
Aucts.

**RESCHEDULED  
PUBLIC SALE  
TUES., FEB. 21, 1995  
9:30 A.M.**

Located Three miles North of Quarryville, five  
miles South of Strasburg. Just south of Route  
222 from Herr and Leaman Equipment Co. At 20  
Main Street, New Providence, Lanc. Co., Penna.

- 6 Extra Good Work Mules
- Full Line Well Kept Farm  
Equipment
- 36 Head Holstein Dairy Cows,  
Sire Power Breeding
- Hay and Corn Fodder By The Ton
- Small Shop Equipment
- Dairying Equipment

Sale For  
**Abner A. Beiler**  
Diffenbachs, Aucts. 225L  
717-393-4464  
Lunch Available

**PUBLIC SALE**

FARM EQUIPMENT • HOUSEHOLD GOODS

**Sat., March 11, 1995 at 8:30 AM**

Located 1562 Maytown Rd., Elizabethtown, Lanc. Co. Pa. Located  
along Rt. 743 midway between Elizabethtown & Maytown.

**TRACTORS:** 285 Massey Ferguson Diesel (w) cab; 65 Massey  
Ferguson Diesel; 65 Massey Ferguson Gas (w) Sauder Loader; 880  
Oliver (w) power steering.

IH 450 auto reset 3-16 plow, 252 Oliver 11-tran. disc; Brillion 12'  
harrow; Brillion 12' cultipacker; NH 679 spreader (w) hay end gate &  
top beater; Mayrath 48' PTO 6" auger (like new); NH 271 baler; NH  
56 rake; MF 15 disc grain drill; IH #7 flail chopper; (2) McCurly  
grain bins (w) RG; JD 400 rotary hoe 15; IH 4 RN cultivator; (2)  
trailers (w) hyd. dump; Smoker 26" elevator; 14' bag elevator; 16'  
alum. elevator, (2) Ferguson cult., Ferg. field harrow, JD #9 grass  
mower, 12 R. Demco 3 pt. sprayer (w) 150 gal tank, Sauders 7' snow  
plow, Woods 8' scraper, Brillion 4 R, cult., flatbed wagon, 6' Gandy  
applicator, plastic 200 gal tank, 3 Jamesway silage carts, 5 T. wagon  
hoist, 10' iron trough, bumper jack, Knipco heater, Surge 2500 KW  
generator, Axman coal stoker, 10'x3' wooden work bench, **Irrigation  
pipe** - 81 pcs. 30' long by 6", various lengths of pipe, 4", 5" & 6"  
fittings. Fenders for 285 MF tractor.

Chicken feeders nests, oak 4"x6"x14' posts, oak boards, Craftsman  
drill press, (2) bench grinders, planer, table saw, sabre saw, Lincoln  
225 welder, air compressor, 250 gal fuel tank, 36" 4 HP elec. Crop  
Dryer fan, new 6-20 trusses, fairbank scales, (2) wagon load sm.  
items, ext. ladders, 10' iron trough.

Ford hydro Md. 145 Riding Tractor (w) 38" mower wheel horse 700  
Ranger 30" mower, 5 hp Merry Tiller - Parker lawn sweeper.

**HOUSEHOLD GOODS:** Oak ext. table, (w) 3 bds., (2) pc. L.R.  
suites, 7 pc. dinette set, 14 cu. ft. chest freezer, (2) air conditioners -  
5400 & 1100 btu, microwave, blanket chest, metal beds, dry sink,  
dough tray, lawn chairs, folding cot, dishes, pots, pans, picnic table,  
wooden swing.

**ORDER OF SALE: household goods, sm. items & farm equipment.**  
**LUNCH AVAILABLE: Not responsible for accidents.**

Sale by  
**A. Lincoln & Edith Keener**

Phone: 367-6597

Auct. AU617L  
Raymond Miller - 717-653-8762  
Jim Hershey 717-665-7284

**HUGE ORCHARD AUCTIONS**

**1380 ACRES IN 41 TRACTS**

**REAL ESTATE - THURSDAY, FEBRUARY 23 - 6 PM**

**♦ EQUIPMENT - FEBRUARY 24 AT 10 AM ♦**

**Location:** On I-87 60 miles south of Montreal, Canada or 150 miles north of Albany, New York to Peru,  
New York - Exit #35; then west on State Route 442 1 mile to State Route 22, then right 1/4 mile to State  
Route 22B (just across bridge), and left 1-1/2 miles to the auction.

**PLEASE NOTE:** We will be selling in two auction rings most of the day. **PLEASE -**  
bring your right hand man to cover the second auction ring.

**TRACTORS**

1988 Ford 4610 4WD diesel w/  
less than 1000 hrs. on rebuilt en-  
gine • 1985 Ford 4610 4WD die-  
sel w/2847 hrs. • 1993 Ford 3930 diesel w/366 hrs. •  
1992 Ford 5610 diesel w/937 hrs. • 1989 Ford 4610  
SU diesel w/1760 hrs. • 1985 Ford 4610 diesel w/  
1861 hrs. • 1980 Ford 4600 diesel • 1978 Ford 4600  
diesel • 1977 Ford 3600 diesel • Ford 555 diesel back-  
hoe/loader, 2275 hrs. & rebuilt engine • (4) sets du-  
als • Simplicity 14 HP & 10 HP garden tractors.

**PICKING  
EQUIPMENT**

(13,700) 19 bu. apple picking con-  
tainers • (2) Northwest straddle  
trailers with hyd. lift (10 bin cap-  
acity - 19 bu. bins) • (3) homemade  
roll bed bin trailers • (6) Edwards rear transtier lifts  
(set for Ford tractors) • (5) Edwards reverse steer  
kits • homemade reverse steer kit • Century mast  
type rear mount forklift • (2) Edwards 3 pt. forks • (3)  
homemade 3 pt. forks • (2) homemade front forks  
(loader mount) • (116) 16' - 19' pointed ladders • (68)  
12' - 15' pointed ladders • (50) 6' - 8' step ladders •  
(140) picking buckets • (250) picking bags.

**SPRAYERS  
DUSTER**

1992 Durand-Wayland 500 gal.  
PTO sprayer • 1987 Bean 587 500  
gal. diesel sprayer • (2) Bean 577  
500 gal. sprayers • 1982 Bean  
4000 500 gal. sprayer • Hardie 2655 500 gal. diesel  
sprayer • Hardie 2655 for parts • 1984 Bean 1229  
100 gal. 3 pt. sprayer • 1975 Bean PTO tree duster.

**MOWERS  
PRUNER  
EQUIPMENT**

14' 1987 Perfect rotary mower w/  
tree kick back • 14' Woods 214  
wing fold rotary mower • 14'  
Woods batwing rotary mower •  
1991, 1989 & 1985 Kuhn GMD.  
66 disc mowers • 7' Perfect hyd. drive flail chopper.  
Ingalls pruner/topper w/10' saw attach. & 9' sickle  
attach. • Girette pruning lift • Yakima pruning lift •  
homemade pruning platform • (4) Limb Lopper air  
pruners • (2) Limb Lopper hyd. pruners • Limb Lopper  
hyd. chainsaw • (4) pruner extensions • (50) Buran  
alum. pruning poles • Stihl 028 chainsaw • Stihl 032  
AV chainsaw • Homelite XL chainsaw • Echo 280E  
chainsaw • Shindaiwa chainsaw • (35) hand scythes  
• 5' 3 pt. PTO rotary tiller • Wilde 3 pt. tree planter •  
Vicon fertilizer shaker/spreader • triple knife 3 pt. root  
mower • hyd. rotary brush rake • 3 pt. PTO post hole  
digger w/(2) augers. **ALSO MANY** shops tools, parts,  
and misc. items.

**VEHICLES**

1978 IH tandem truck w/22' stake  
bed • 1977 & 1975 GMC tandem  
trucks w/22' stake beds • (2) 1971  
IH trucks w/18' & 14' stake beds • 1976 Dodge dump  
truck • 1970 Chevrolet dump truck • (2) 1977 IH buses  
• 1975 IH bus • (2) 1970 IH buses • 1981 Chevrolet  
mini-bus • 1982 Dodge van • 1987 Chevrolet pickup  
• 1986 Isuzu pickup • 1984 GMC pickup • 1966 Dodge  
military pickup.

**TERMS:**  
U.S. FUNDS ONLY.

**PLEASE SAVE  
APPEARS ONCE!**

**CALL 1-800-451-2709 (or 219-244-7606) FOR DETAILED REAL  
ESTATE BROCHURE & EQUIPMENT AUCTION LISTING.**  
Schrader/Munson Auctioneers



**PUBLIC SALE**

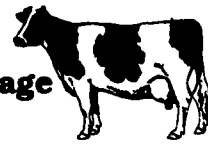
**Wed., March 1, 1995**

**Heifers, Horses, Mules &  
Farm Equipment**

**9:00 A.M.**

**9:00 A.M.**

**Location:** 6 miles East of Quarryville on 372 to Green Tree Cross Rd. take Valley Rd.  
East to 2nd farm right or 2 miles West of Christiana along Valley Rd. Watch for Signs!  
**Sale Order Small Items, Equipment, Heifers, Horses**



**20 Heifers**  
**5 Heifers due in April**  
**10 Open Heifers Breeding Age**  
**5 Heifers from 3 months to 8 months of age**  
**Blood tested and vaccinated!**  
**Milking Equipment**

Petter 2 cylinder diesel, Alamo vacuum pump, 2 milker units with Westfalia Pulsators, 1 extra bucket,  
2 strainers, other milk buckets, 5 HP air compressor, cooling compressor, Bender washer.

**40 ft. Corn Silage in 12 ft. Silo**  
**3 Work Horses 2 Mules**

Broke to all Farm Machinery  
**Horse Related Items**

7 set front gears, 7 bridles, 20 collars, 2 set check lines, jockey sticks, complete set driving harness, 3,  
4, 5 & 6 horse hitches, single trees, double trees, double pole.

**New Items**

2: New 16 ft. flat wagons with farm built gears, 2 8 ft. log rollers, 1 Ky. style bale box, new feed  
bins, yokes, single trees, double trees, 4,5,6 & 7 horse hitches.

**Farm Equipment**

Case 930 overhauled in 1990, good condition with side pulley & 1000 PTO; 2-McCormick #9  
ground drive mower with 7 ft. bar (reconditioned 1 yr. ago), 256 New Holland Rake, hay tedder,  
Grimm hay tedder, New Idea crimper with smoker rolls, 311 New Holland Baler (good condition), 2  
round bale feeders, John Deere 999 corn planter, McCormick Deering 14 in. 2 way plow, New Idea  
tobacco planter (good condition), 20 KBA Disc like new, Fisher field sprayer, 10 disk Superior grain  
drill, 6 ft. cultipacker, McCormick Deering cultivator, John Deere 3 section spring harrow good  
condition, McCormick Deering grain binder, E.L.S. liquid manure spreader, New Idea 10A manure  
spreader used 1 yr., 206 manure spreader good condition, belt driven saw buck, 16 in. Dellinger silage  
cutter with extra knives, portable cement mixer, Bartville scraper blade, McCormick Deering  
cultivator for parts, 12 ft. weeder, 2 - auto turn fore carts, 1 Farm Bilt 16 ft. flat wagon, 1 Gehl 16 ft.  
flat wagon, 2-8 ft. log rollers.

**Misc. Equipment**

2- John Deere PTO pulleys, 3-Minnich tobacco bale boxes, tobacco scuffle, tobacco hoers, 5000  
tobacco lath, tobacco spear & shears, cyclone clover seeder, endless belts & pulleys, lawn rollers,  
wire roller, chicken nests & feeders, cow stable lime spreader, can't kick cow trainer, silage cart, feed  
carts, wheelbarrows, shovels, brooms, forks, plus many more items.

Owner

**Isaac S. Miller**

1718 A Valley Rd., Christiana, PA 17509

Cash or Honorable Pa. Checks Only

All Announcements Sale Day Take Precedence Over All Advertising

Not Responsible For Accidents

Food On Premises

Auctioneer: Mel Hoover AU-003111-L  
717-354-8397 Home Barn 717-354-6431

