

**1 FARM EQUIPMENT**

**MISC. USED EQUIPMENT & TRACTORS USED TRACTORS**

IH F706D  
Case 800D Tractor  
Satoh 650G w/L59 Mower  
Farmall Cub w/Mower and blade

**USED EQUIPMENT**

JD 1219 Mower Conditioner  
IH 1190 9' Mower Conditioner  
IH 800 6R Planter  
Kuhn 200 Mower Conditioner  
Kuhn SC300 Mower Conditioner  
NI 353 Spreader  
NI 484 Round Baler  
IH 440 Baler w/Thrower  
IH 510 Drill 18x7  
Woods HD 315 Mower  
Gehl 1500A Round Baler  
72" Manure Forks for 2250 loader  
Pull Drop Spreader  
NI Pull Type Spreader

Spring Auction - March 25, 1995

**BIGGS INCORPORATED**  
190 Biggs Hwy., Rising Sun, MD  
410-658-5531

1994 CASE CORPORATION



**SALE OF EQUIPMENT**

62x23 Slurry Store Structure  
23' Over-The-Top Agitation  
62' Center Agitation  
Side Mount Pump & Spreader Fill Pipe  
(2) 25x80 Harvestores w/Model 74 Goliath Unloader  
(1) 20x80 Harvestore w/Model 74 Goliath Unloader  
1979 JD 4640 Diesel Tractor w/Custom Cab  
1979 JD 331 Fold-up Disc, 22'

Complete Feedroom Equipment with  
285 Van Dale Mixer 15 HP 3 Phase Motor  
600B Wa-Ro-Matic w/7 1/2 HP 3 Phase Motor

**MILKING EQUIPMENT**

(2) 76 Delaval Vacuum Pumps w/3 HP Motor  
Model D Fre-Heater  
Plate Cooler  
8 Milker Units DV-300  
3" PVC Vacuum Line & Reserve Tank & Air Controllers for 102 Stall barn  
350' 2 1/2" Stainless Milk Line  
80' 3" Stainless Milk Line  
Model 1755 Pipeline Washer & Stainless Wash Vat

Interested, Call

**Foxlease Farm**  
703-592-3511

**FARM TRACTOR PARTS**

USED - NEW - REBUILT

**JUST ARRIVED FOR SALVAGE**

IH 560 Hi Clear  
IH 766D  
IH 656

MH 35  
AC 170  
Ford 1600

**WENGER'S FARM MACHINERY, INC.**

814 SOUTH COLLEGE STREET (ROUTE 501)

MYERSTOWN, PA 17067

717-866-2135

MON.-FRI. 7:30-5:00

SAT. 7:30-12:00



**WENGER'S, INC.**

251 South Race St., Myerstown, PA 17067

717-866-2130

HOURS: Mon.-Fri. 7:30 to 5:00; Sat. 7:30 To Noon

NIGHTS, PHONE:

717-866-7147

717-273-9089

FAX

717-866-4300

**REPAIRS & SERVICE**

Pickup And Hauling  
ALL MAKES OF TRACTORS  
FAIR PRICES  
EXCELLENT WORK  
Call (717) 428-3280  
**ANDERSON TRACTOR SALES, INC.**

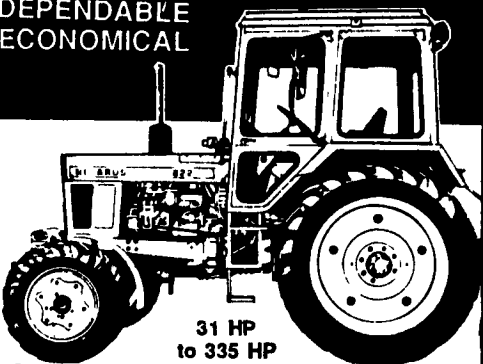
141 S. Main Street, Jacobus, PA  
5 Miles South of York Off I-83  
Between Exits 3 & 4

**Belarus**

TWENTY SUCCESSFUL YEARS IN AMERICA!

Outstanding Parts Availability

DEPENDABLE ECONOMICAL



31 HP to 335 HP

QUALITY TRACTORS BARGAIN PRICES!  
Full Year Warranty on Parts and Labor  
Join The Move To Belarus

**SPECIAL - IN STOCK**

57, 65 and 81 HP  
4 WD Tractors w/Heated Cabs & Quick Attach Loaders  
GET READY FOR SNOW HANDLING BARGAIN PRICES

- 31 HP Diesel w/ROPS.....\$7,095
- 36 HP Diesel 4 WD w/ROPS....\$9,995
- 57 HP Diesel, 4WD w/ROPS..\$14,200
- 65 HP Diesel 4WD w/Cab.....\$16,600
- 81 HP Diesel 4WD w/Cab.....\$18,800
- 100 HP Diesel 4WD w/Cab.....\$22,700
- 185 HP Diesel 4WD w/Cab.....\$38,800

Husco Hydraulics

Now Available On Belarus Tractors

Serving Southern Pennsylvania and Maryland  
**ANDERSON TRACTOR SALES, INC.**

Front End Loader Specialists

141 S. Main St  
Jacobus, PA  
(717) 428-3280

4600 Breidenbaugh Lane  
Glenarm, MD  
(410) 592-7422

Toll Free 1-800-457-5705



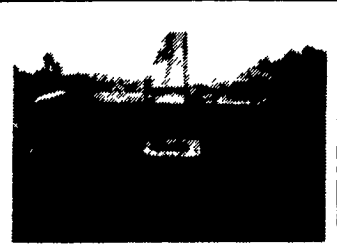
Cat V60B Forklift, Diesel, Sideshift, 6000 Lb., Air Tires, Runs Very Good.  
**\$10,500**



Athey S70 Log Skidder, Diesel, Winch, Needs Paint, Running Condition  
**\$6,900**



Fox Brady Cinder Spreader, Tow Type, Ground Driven, Pintle Hitch  
**\$1,000**



Scard Snowblower, V8 Gas, Power, Fits Big Rubber Tired Loader  
**\$8,500 Or Offer**



1985 Case 580E, Cab, 4x4, Extendahoe, Clean, Low Hours  
**\$26,500**



Chipmore Diesel Chipper, Rebuilt Engine, Runs Very Good.  
**\$6,900**



Case W18 Loader, 1977 - Operating Condition  
**\$18,500**



Fiat FL10C - 1980 - Rebuilt Transmission, Very Good U/C, Nice Machine  
**\$18,500**

**WANTED: Good Late Model Construction Equipment Need S/N And Price When You Call**  
Lease Purchase Available On Most Machines

**TRUCKS/CARS**

- 1972 Ford F600 Dump - Gas \$3,900
- 1984 Chevy Conversion Van .. \$4,500
- 1989 Honda Accord LX - Auto - 4 Dr \$6,950
- (2) 1989 Honda Accord LXI - 4 Dr - 5 Spd .. \$7,450
- 1990 Acura Legend L Sedan - Auto \$9,950
- 1992 Lexus ES300 - Loaded \$21,900

**TRAILERS**

- 1995 5 Ton Tag-A-Long - 6.5x14 .....\$1,595
- 1995 5 Ton Tag-A-Long - 6.5x16 .....\$2,095
- 1995 5 Ton Tag-A-Long - 6.5x18 .....\$2,195
- 1989 9 Ton Tag-A-Long .....\$2,900
- 1994 6 Ton Tag-A-Long - 8x19 .....\$3,350
- 1972 Trailmobile 30 Ton Lowboy .....\$5,900
- 1994 10 Ton Tag-A-Long .....\$6,500
- Dorsey 30 Ton Lowboy .....\$6,900
- 1994 10 Ton Tag-A-Long w/Air .....\$7,450
- 1994 20 Ton Tag-A-Long w/Air .....\$10,500

**MISCELLANEOUS CONSTRUCTION**

- (50) New & Used Hoe Buckets..... COME SEE
- (50) Loader Buckets ..... COME SEE
- (50) Set Forklift Forks ..... COME SEE
- JD 350B Ripper .....\$1,000
- Cinder Spreader .....\$1,000
- Tennant 92 Sweeper - Dsl - As Is .....\$1,900
- Western 1 Ton Roller .....\$1,950
- Root Rake - 8' - JD 6 Way.....\$2,500
- Root Rake - 9 1/2' - Case W30....\$2,500
- Root Rake - 8 1/2' - JD 444C.....\$2,500
- Bomag Walk Behind Roller - Diesel .....\$2,900
- Schramm 160 Air Comp. ....\$3,000
- JD 350 Winch - Attach.....\$3,750
- Miller 14' Offset Disc .....\$3,900
- (3) Sheeps TVR30 Roller .....\$2,900/\$4,500
- Euclid 10 Ton Rock Truck.....\$4,500
- Mauldin Paver - Gas .....\$4,900
- Wayne 16" Chipper - Gas .....\$4,900
- Vermeer 1560 Stump Grinder.....\$5,900
- Essick VR42R Roller - 2 Ton .....\$5,900
- Hyd Hammer (Case 580) . . . . . \$6,000
- Chipmore 12" Chipper - Dsl. . . . . \$6,900
- Koehring TVR30 Roller - Diesel . . . . . \$6,900
- Euclid R18 Rock Truck - 1956 . . . . . \$7,500
- Eager Beaver Disc Chipper - Dsl . . . . . \$7,900
- IR 160 Diesel Compressor - 1990 . . . . . \$8,500
- Scard Snowblower - V8 Gas . . . . . \$8,500
- Galion 503 L Grader - 1972. . . . . \$14,500
- Champion 715 Grader - 1977.. . . . \$14,500
- (2) Wabco 35 Ton Rock Truck . . . . . Ea. \$14,500
- Ford 6610 w/Hyd Arm Mower - 1984. . . . . \$18,500
- Euclid R35 Rock Truck - 1967.....\$26,500
- Ingersol SD100D Compactor - 1987 . . . . . \$48,500

**CRAWLER LOADERS**

- IH 500C - Ripper - 4N1 - 1970 . . . . . \$7,900
- Fiat FL10C - ROPS - 1981 . . . . . \$18,500
- Cat 941B - ROPS - 1974 - 4N1 . . . . . \$18,500

**RUBBER TIRE LOADERS**

- Case W9B - Gas - Cab - 1967 .. \$4,900
- Case W18 - Cab - 1977.....\$18,500
- Ford A64 - Cab - 1975. ....\$19,500
- Case W11B - Cab - 1988.....\$28,500

**FORKLIFTS**

- White Towmotor - LP Gas . . . . . \$2,500
- Hyster 8000 Lb. - Dsl. - RT . . . . . \$7,900
- Cat V60B - Diesel - 6000 Lb.....\$10,500
- Cat V80C - LP - Air Tires - 1975. . . . . \$10,500

**DOZERS**

- IH TD8E - 6 Way - 1979 . . . . . \$18,500
- Komatsu D31P - ROPS - 1985 - 6 Way. . . . . \$23,500

**LOG SKIDDERS**

- Athey S70 - Winch . . . . . \$6,900
- Franklin 170 - Grapple - 1980 . . . . . \$10,500
- Clark Ranger 667 - Grapple - 1972 . . . . . \$10,500
- JD 540B - 1982 - Grapple . . . . . \$19,500
- Tree Farmer C7D - 1980 . . . . . \$22,500

**SKID LOADERS**

- Backhoe For Case 1835B.....\$3,900
- NH 775 Diesel - 1977.....\$8,900
- Case 1840 - Diesel - 1992.....\$14,900
- Bobcat 943 - Diesel - 1990.....\$20,000

**BACKHOES/EXCAVATORS**

- Hoe Attachments .....From \$2,000
- Nissan NI50-2 Excavator - 1988.....\$8,900
- JD 410 - ROPS - 1973 . . . . . \$10,500
- JCB 1550 - ROPS - Ext. - 1985 . . . . . \$12,500
- JD 410 - Cab - 1978 . . . . . \$14,500
- JD 310B - ROPS - 1985.....\$14,500
- JD 510 - Cab - 1980 . . . . . \$16,500
- Case 580D - Cab - 1982 . . . . . \$17,500
- JD 510 - Cab 1982.....\$19,500
- JD 510B - Cab - Ext - 1984 . . . . . \$21,500
- JD 690B Excavator - 1978. . . . . \$22,500
- Ford 555B - Cab - 1987.....\$22,500
- JD 510B - ROPS - 4x4 - 1985.....\$23,500
- Case 580E - 4x4 - Cab - Ext - 1985 . . . . . \$26,500
- Case 580K - 4x4 - Cab - Ext - 1988. . . . . \$31,500
- Ford 655A - 4x4 - Cab - 1987. . . . . \$32,500
- Ford 655C - 4x4 - Cab - Ext - 1989.....\$34,500