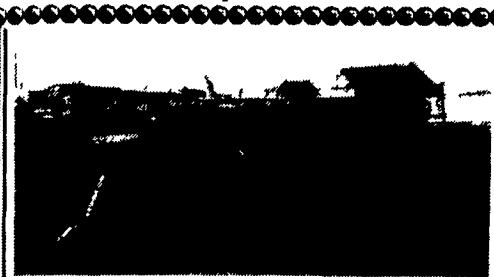


6650 Farm Hand Tub Grinder
Set up for Mulch. Also Hay Grinder, Excellent Cond., Electronic Tub, Speed Control
(814)793-3923



John Deere 750
15' No-Till Drill
With Grass Attachment
\$20,500
301-663-6060



3 Pt. Unit Or On Wheels
DH 230 Manure Pump 6-14'
Renting Manure Pumps
• Hydraulic & Manual Operated.
• It Chops Heavy Solids
Hydraulic Hoses, Sprockets, Roller Chain, PTO & Gate Belts
Stainless Steel & Aluminum Welding
Gutter Grates Made To Order

UNTESTED PIPES 3/4" to 6"

DRY HILL FARM SHOP

We Ship RR 1 Box 426
Lykens, PA 17048-9744
(717) 365-3109
Call 8:00 to 8:30 AM
Rt. 25.1 Mile North of Crossroad Auction
Dealer Inquiries Welcome

Beiler Machinery

601 Musser School Rd.,
Leola, PA 17540
717-656-9733

Martins Liquid Hauling

RD#1 Box 943-A
Martinsburg, PA 16662
814-793-4199

ROPE AND PULLEY EVENERS for hitching tandem \$40/set
Yokes and 2-8 horse hitches
Will ship UPS prepaid

KELLER'S FARM MACHINERY

116 Richlandtown Pike
Quakertown, PA 18951
215/536-4046

USED TRACTORS

- JD 1450 4x4
- JD 2440, 2300 hrs.
- Ford 8210 4x4, cab, air
- Ford 9N w/loader
- Ford 8N w/Snow Plow
- Ford 1715, 4x4 w/Snow Plow
- Ford 1910 w/loader, 4x4, ps
- Ford 801 w/loader, ps, new paint
- Ford 3910 w/Ford 776B loader
- Ford 1710 w/Ford 770B loader
- Ford 2000 8 speed, ps, live pto
- Ford 3000 diesel, 8 speed, live pto
- Ford 555A, Tractor Loader Backhoe
- Farmall Cub w/Snow Plow
- Farmall C w/single front wheel
- AC CA w/2B Plow
- AC 5020 w/Woods mower
- Ford 4600D, w/cab
- Ford 340B w/loader, P.S., 3pt.
- Ford 6610 Series 2, fully equipped
- Ford 4630 fully equipped, like new
- Ford 3230 w/300 Hrs.
- Ford 3910 Series 2, 8 Spd. w/snow plow
- Farmall Cub w/Woods Mower

STOUFFER BROS. INC.

1066 Lincoln Way West, Chambersburg, PA
Phone 717-263-8424

FORAGE

- Assortment of Gehl 99
- Gehl CB400 Harvester
- Gehl 1000 w/2 Row & Pickup
- Gehl 1250 w/3 Row head & Pickup
- IH 550 Harvester
- NH 27 Blower
- Gehl 72 Flail Chopper
- NH 718 w/2 row
- JD 125 Box
- GEHL 610 Forage Box
- Hesston 1091 Windrow Forage Blowers

PLANTERS

IH 400 Cyclo Planter

MOWER CONDITIONERS

- Hesston 6200 Self-Propelled 12 Ft. Very Good Condition
- Vicon 281 Disc Mower Conditioner
- Gehl 880
- NH 469
- Case 650 Self-Propelled
- NH 1495 Self-Propelled
- NH 495 Haybine
- NH 495 Mower
- Hesston 1150 Mower Condition

SKID LOADERS & UTILITY

- Gehl 3310 Skid Loader
- Gehl 2600 Skid Loader
- Case 1845 Skid Loader
- Owstonne 440
- Case 1845C Skid Loader Ex Cond.
- Case 455 Crawler/Loader
- IH 4130 Utility Loader
- Case 580E Backhoe, 4WD
- Case 450B Crawler/Loader

MISCELLANEOUS

- Gehl 309 Spreader
- Brand New—Snowblower that fits a Woods 1250 Front Mower
- Vicon 300 Tedder Rake
- Allows Hyd. Auger, Fits Case Skid Loader
- Oliver 62T Baler w/ Thrower
- GEHL MX95 Grinder/Mixer
- NH 357 Grinder/Mixer

TRACTORS

- David Brown 1212
- Kubota F21C1 w/6' Mower
- Wheelhorse 312-8 w/ Mower
- Ingersoll 4016 Tractor
- Case 222 Tractor
- Ariens Rider
- Cadet 382 Hydo. w/Bagger

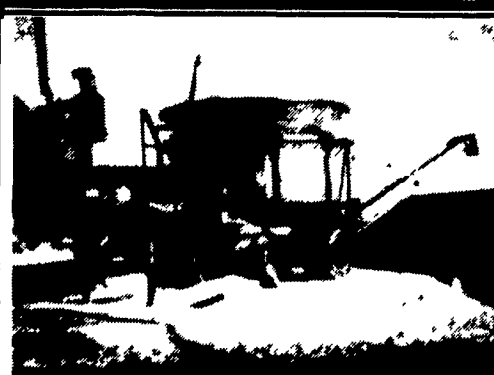
SALES, PARTS & SERVICE FOR... CASE UTILITY • GEHL • VICON • WFE • KUBOTA • HESSTON • SAME

Alternators

- WINPOWER 25 KVA - Belt Drive, 120/240 Volts. Single or Three Phase. Never In Use\$1,500
- PINCOR 1.5 KW PTO Alternator with three point carrier, shaft and power cord.....\$1,250
- AGTRONIC 1.5 KW, PTO Alternator with three point carrier, shaft and power cord.....\$1,150

ALSO NEW ALTERNATORS. Winco, Marathon and Winpower

WALLIS GENERATORS
1-800-231-2968



1 - Used Who Tub Grinder
Detroit Powered
Asking \$50,000.00 or Good Offer
Can be seen Working
Remember spring just around the corner
717-438-3354

Best Buys in Used Equipment

TRACTORS

- | | | |
|-------------|----------------|-------------------|
| IH 3588 | (2) IH 966 | CIH 7130 |
| IH 4568 | JD 4020 | (3) CIH 7110, 2WD |
| (2) IH 4366 | JD 4840 | (2) CIH 7120, MFD |
| IH 1486 | JD 2550 | (2) CIH 9270 |
| IH 1086 | Case 2290 | Farmall M |
| (2) IH 1066 | Case 3294, MFD | Ford 5000 |
| IH 5288 MFD | Case 1270 | AC WD45 w/Loader |
| IH 706 | Case 4890 | |
| (2) IH 806 | Case 2670 | |
| IH 464 | | |

DISCS

- | | | |
|---------------|---------------|-------------------|
| KR 1577 16'8" | IH 490, 21' | Midland 1050, 26' |
| KR 1927 25' | IH 470, 18' | JD 430 12' |
| KR 4907 25' | IH 496, 25'8" | MF 520 16' |
| KR 4927A | IH 496, 27'6" | MF 820, 26' |
| KR 1965 | IH 490, 23' | MF 620 |
| KR 1966 | IH 475, 18' | |

COMBINES

- | | | |
|------------------|-------------|---------|
| (2) Case IH 1480 | (2) IH 1480 | JD 4400 |
| (3) Case IH 1680 | IH 915 | JD 8820 |
| CIH 1640 | (2) IH 1420 | AC F |
| CIH 1644 | (3) IH 1460 | ACM |
| CIH 1660 | (3) JD 7720 | NH TR85 |

CHISEL PLOWS

- DMI Tiger II Sub-Soiler 7 Shank
- DMI Tiger II Sub-Soiler 5 Shank
- JD 910 sub-Soiler, 13 Shank
- (2) Sunflower 21' Chisel Plow
- IH 55 chisel Plow, 13 Shank
- Stieger 2211, Slicer chisel, 14'
- SF HB 30 Chisel Plow
- BR 16' Chisel Plow
- Athens 156 Chisel Plow, 3 Pt. 10' & 12'
- Ferguson 9 Shank Chisel Plow

PLOWS

- | | |
|-----------------|-----------------|
| Case 400, 8'18" | IH 560, 6 Btm. |
| IH 510 | IH 720, 6x16 |
| IH 531, 3x14 | IH 800, 10 Btm. |

MISC. TILLAGE

- | | |
|--------------------------|-----------------------------|
| KR 3131 Landsman | BR 25' Cultimulcher |
| KR 3921 Fld. Cult. | BR 34' Packer |
| KR 3121 Landsman | BR 25' CF Packer |
| KR 4612 F-3 Fld. Cult. | Sunflower 17' land Finisher |
| IH 45 Fld.-Cult, 18' 22' | Bervac 615 Fld. Cult. |
| BR 16' CF Packer | UM 31' Rolling Baskets |
| BR 14' Packer | Landoll Tillall 875 |
| BR 14' Culti-Mulcher | Landsman |

DRILLS

- | | | |
|--------------|-------------------|----------------------|
| GP 12' | JD 8300 | IH 5100 21x7 |
| GP 24' | w/Cultiplanter | w/cultiplanter |
| (3) GP 15' | JD 750, 15 Ft. | CIH 5400 |
| GP 20' | (3) IH 5100 Drill | w/Cultiplanter, 26x7 |
| (2) GP 30' | IH 510 | CIH 5300 |
| JD 8000 23x7 | 21x7, 24x6 | (3) MF 43, 22' |

MISCELLANEOUS

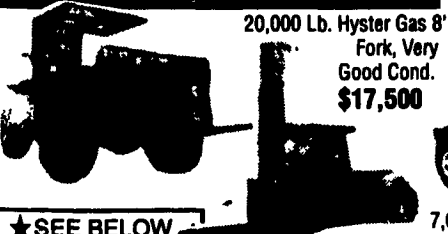
- | | |
|----------------------------|---------------------------|
| AC 600 Planter, 18' | Woods 15' Batwing Mower |
| JD 7200 16x30 Planter | NI 323 Corn Picker, 1 Row |
| JD 71 Bean Planter | Badger TA54 Blower |
| NH 1499 Haybine | Berthoud D6 Sprayer |
| NH 575 Baler | Gehl 1865 Rd. Baler |
| NH 2000 Baler | UFT 400 Grain Cart |
| Schulte 5026 Rotary Cutter | Kinze Grain Cart |
| 26' | |

HYMAN EQUIPMENT

BALTIMORE, MD

(410) 337-3570

Call Alan Hyman anytime



20,000 Lb. Hyster Gas 8' Fork, Very Good Cond.
\$17,500

-MECHANICS SPECIALS- MANY OTHER FORKLIFTS IN YARD - CALL FOR SPECS



8,000 lb. Pneumatic Forklift, LPG, 6' Forks, Side Shift
\$3,500

2,000 lb. Electric Walk Behind Forklifts 5 Lift \$1,500 to \$2,000 Ea.
Electric Pallet Jacks \$500 to \$800 Ea.

★ SEE BELOW DESCRIPTION

FORKLIFTS

- | | |
|---|--|
| ★ 12,000 lb. 4WD forklift, rebuilt 453 Detroit Diesel eng. (0 time).....\$15,000 | 3,000 Lb. A/C LPG Runs.....\$800 |
| 4,000 lb. Clark pneumatic LPG, good cond.....\$3,200 | 10,000 lb. Hyster Karry Crane, runs good.....\$6,000 |
| 2,500 lb. Clark electric, w/charger.....\$2,500 | 5,000 Lb. CAT, solid tire, LPG, S/S, very good.....\$5,000 |
| 15,000 lb. Trojan articulating, 7' forks, Cummins diesel, very good cond.....\$15,000 | 5,000 Lb. Hyster solid tires LPG, 3 stage very good.....\$4,500 |
| 5,000 lb. Hyster, side shift solid tire, LPG, 1987, 3-stage, excel. cond., low hrs.....\$10,000 | 4,000 Lb. Baker electric, new battery.....\$4,000 |
| 4,000 lb. Towmotor, solid tire, LPG, P/S, light rattle & forks won't come down.....\$1,200 | 3,000 Lb. Raymond Reach Truck, Good Cond.....\$3,000 |
| 2,500 Lb. Hyster 3 Wheel Pneumatic Gas, Auto, P/S, Very Good Cond.....\$3,000 | 5,000 Lb. Clark, Electric w/charger, very good condition.....\$3,000 |
| | 10,000 Lb. Dual pneumatic, old but runs.....\$1,000 |



MIDDLETOWN, DE
(302) 378-9555 1-800-341-4028

