

PUBLIC AUCTION

SATURDAY, FEBRUARY 25TH, 1995
9:00 A.M.

SCHAPER BROS.
ANNUAL SPRING CONSIGNMENT SALE

OF
**TRACTORS, ALL KINDS OF FARM
EQUIPMENT, LAWN AND GARDEN
EQUIPMENT, SHOP TOOLS, LIGHT
INDUSTRIAL AND RECREATIONAL
EQUIPMENT**

LOCATED
VINELAND-BRIDGETON PIKE (ROUTE 56)
(WEST OF RAINBOW LAKE)
PITTSBURGH TOWNSHIP, N.J.

TURN YOUR UNUSED EQUIPMENT INTO CASH
PICK UP AND DELIVERY AVAILABLE

TERMS: CASH

FOR FURTHER INFORMATION CALL
(609) 458-1640

WOLGEMUTH AUCTION SERVICE
Dennis #2357 Ph. 717-733-8192

Public Auction Register

Closing Date Monday 5:00 P.M.
of each week's publication

WED. JUNE 7 - 6:30PM State Graded Feeder Pig
Winross Trucks & toys. Carlisle Livestock
A&C Dffenbach Auction, Market, Inc., Exit 12 off I-81
Inc. 100 W. Jackson St., turn South then left onto
New Holland, Pa. Alexander Spring Rd.,
249-4511.

FRI. JUNE 9 - 1:30PM

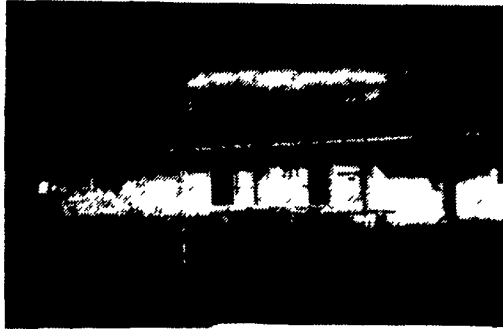
PUBLIC AUCTION

OF VALUABLE REAL ESTATE,
HOUSEHOLD GOODS, ANTIQUES
& COINS

SAT., FEB. 11, 1995

Sale at 9:00 A.M.
Real Estate at 11:00 A.M.

Located 1/2 mile south of Rt. 23, turn off Rt. 23 at
West End of New Holland at Good's Furniture Store
on South Shirk Rd. Sale at 149 S. Shirk Rd., New
Holland, Earl Twp., Lanc. Co., PA.



Lot 80'x165' M/L Zoned Industrial

Ranch type dwelling Holland Stone & Vinyl Siding.
Kitchen w/built-in cabinets, eye-level oven, counter
top electric stove, dining room sliding doors to flag-
stone patio, living room w/stone fireplace, 3 bed-
rooms w/closets, full bath, hallway w/closet, hard-
wood floors, utility room w/steps to full basement w/
laundry room & hookup, oil fired hot air heat, electric
water heater, well w/pressure system, water softener,
public sewer, two 275 gal. oil tanks, 100 amp ser-
vice, flagstone front porch, storm windows & doors,
blacktop drive, storage shed in back yard.

For appointment call 717-656-7770. 10% down
day of sale, balance on or before April 11, 1995.

**ATTENTION — Furniture &
Appliances sold at 9:00 A.M.
Coins sold at 11:30**

HOUSEHOLD GOODS — Old Grandfather
Clock w/Date, Old Dough Tray on stand, Ladder-
back Cheese Rocker, Old Balloon-type Rocker, 3 pc.
Depression Bedroom Suite, Old Towel Rack, Dove-
tailed Blanket Chest, Large Dove-tailed Blanket Chest
w/2 Drawers - Original Hardware, Maple Gateleg
Dropleaf Table, 6 Maple Chairs, 3 pc. Maple Bed-
room Suite, Cedar Chest, 3 pc. Maple Living Room
Suite, End Tables, Coffee Table, Needlepoint Foot
Stool, Small Child's Chair, Maple Bookcase, Rush
Bottom Bar Stools, Chest of Drawers, Single Bed.

APPLIANCES — Maytag Washer, Hotpoint
Refrigerator - Freezer Top, Small Appliances, Win-
dow Fan, Floor & Table Lamps, Pictures, Frames,
800 Hr. Clock, Large Braided Rugs, Hooked Rugs,
Handmade Bedspread, Linens, Fancywork, Braided
Chair Pads, Christmas Items, Two Old Checkwriters,
Brass Butcher Bell, Scoop Scales, Old Brass Hang-
ing Light - Electrified, Brass Aladdin Lamp, Copper
Dipper, Lantern, Mandolin in Original Case, Sadi-
rons, Old Jointed Doll Nippon Head 03, Old Cloth
Doll, Baskets, Old Rye Basket.

GLASSWARE — Fiestaware - Plates, Cups &
Saucers, Soup Bowls, Gravy Boat, Platters, Dessert
Plates; Carnival Dish, Salts, Pressed Glass, Vinegar
Cruet, Amber Chicken on Nest, 5 pc. Toilet Set, Com-
pote, Large Earthen Bowl, Roseville Jardiniere, Ger-
man Beer Steins, Crocks & Jugs, Blue Pt. Jars, Jars.
Cooking Utensils, Revereware, Flatware & Chest.

4 Rack Gun Case, 410 Stevens Model 59A Bolt
Action, Shell Reloading Tool Outfit, Hand & Garden
Tools, Old Large Wooden Plane, Toolbox, Double
Wheel Grindstone, Pedal Grindstone, Electric Drill
Saber Saw, Push Mowers, Stapleladder, Rubber Tire
Wheelbarrow, Bucksaw, many other items not men-
tioned.

COINS — 1854 One Dollar Gold Piece, Silver
Halves, Dimes, 1818 - 50 Cent Pc., V-Nickels -
1902-07-10-1912, 1819 & 1851 1/2 Cent Pc., 1865 - 3
Cent Pc., Flying Eagle - 1857, Two 1858, Large
Cents - 1826, 28, 31, 33, 37, 38, 42, 44, 45, 47, 48,
51, 53, Book of Lincoln Pennies 1909 to 1940 w/4
missing, Indian Heads - From 1880 to 1908 Com-
plete, Indian Heads - 1859-60, 61, 62, 63, 64, 66, 73,
& 74, Wheat Pennies, Foreign Coins, Coin Books,
1963 Mint Set, Many Others.

Terms by

**DAUPHIN DEPOSIT BANK
HARRY M. GOOD**

Auct.
Robert E. & Jeffrey R. Martin, (717) 656-7770
AU000580L
Randall L. Ranck
Michael Martin, App.
Linda Kling, Atty for Wentz, Weaver & Kling
No Out of State Checks
Lunch Available

FRI. JUNE 9 - 9AM Farm
equip, tractors & farm sup-
plies. A&C Dffenbach Auc-
tion, Inc. 100 W. Jackson
St., New Holland, Pa.

WED. JULY 5 - 6:30PM
Winross Trucks & Toys.
A&C Dffenbach Auction,
Inc. 100 W. Jackson St.,
New Holland, Pa.

TUES. JUN. 13 - 8PM
Feeder Cattle Sale. Carlisle
Livestock Market, Inc., Exit
12 off I-81 turn South - then
left onto Alexander Spring
Rd. 249-4511.

FRI. JUNE 16- 7PM Horse
Sale. New Holland Sales
Stables, Inc., 101 W. Fulton
St., New Holland, Pa.

WED. JUN. 21 & THURS.
JUN. 22 - Large Two Day
Sale of Farm Equipment,
Etc. Located 6 Miles South
Of Chambersburg, Pa. One
Mile East of Marion along
Rt. 914, 1/2 East Off Rte.
81, Exit 4. Owners, Jerrold
& Gloria Oaks. Marion Auc-
tion Service.

FRI. JUNE 23 - 1:30PM
State Graded Feeder Pig
Sale. Carlisle Livestock
Market, Inc., Exit 12 off I-81
turn South then left onto
Alexander Spring Rd.,
249-4511.

JULY

SAT. JULY 1 - Mel's
Stables. at 834 Wallace
Rd., New Holland, Pa.
From Rt. 23 in New Hol-
land, go S. on Brimmer
Ave., go 2 miles S. on New
Holland Rd. to Hill Rd. Turn
left on Hill Rd. Proceed 1.2
miles to sale on left. From
Rt. 340 E. of Intercourse
take New Holland Rd. 2.5
miles to Hill Rd., right on
Hill Rd. at sale on left. Mel
Hoover, owner.

SAT. JULY 22 - Mel's
Stables. at 834 Wallace
Rd., New Holland, Pa.
From Rt. 23 in New Hol-
land, go S. on Brimmer
Ave., go 2 miles S. on New
Holland Rd. to Hill Rd. Turn
left on Hill Rd. Proceed 1.2
miles to sale on left. From
Rt. 340 E. of Intercourse
take New Holland Rd. 2.5
miles to Hill Rd., right on
Hill Rd. at sale on left. Mel
Hoover, owner.

SAT. JULY 1 - 9AM, Con-
signment Sale, Household
Items, Antiques, Furniture,
Tools, Farm Machinery,
Farm Supplies, Any Item
Saleable. 2 Miles N. Of
Schaefferstown On Rt.
897, 4 Miles S. Of Leb., Pa.
In Village Of Flintville. Ben
Haberger, Auct.
#AU-001296L.

WED. JULY 5 - 6:30PM
Winross Trucks & Toys.
A&C Dffenbach Auction,
Inc. 100 W. Jackson St.,
New Holland, Pa.

FRI. JULY 14 - 9AM Farm
equip, tractors & farm sup-
plies. A&C Dffenbach Auc-
tion, Inc. 100 W. Jackson
St., New Holland, Pa.

FRI. JULY 14 - 1:30PM
State Graded Feeder Pig
Sale. Carlisle Livestock
Market, Inc., Exit 12 off I-81
turn South then left onto
Alexander Spring Rd.,
249-4511.

FRI. JULY 14 - 7 PM Hors
Sale. New Holland Sales
Stables, Inc., 101 W. Fulton
St., New Holland, Pa.

TUES. JUL. 18 - 8PM
Feeder Cattle Sale. Carlisle
Livestock Market, Inc., Exit
12 off I-81 turn South - then
left onto Alexander Spring
Rd. 249-4511.

WED. JUL. 19 & THURS.
JUL. 20 - Large Two Day
Sale of Farm Equipment,
Etc. Located 6 Miles South
Of Chambersburg, Pa. One
Mile East of Marion along
Rt. 914, 1/2 East Off Rte.
81, Exit 4. Owners, Jerrold
& Gloria Oaks. Marion Auc-
tion Service.

SAT. JULY 22 - Mel's
Stables. at 834 Wallace
Rd., New Holland, Pa.
From Rt. 23 in New Hol-
land, go S. on Brimmer
Ave., go 2 miles S. on New
Holland Rd. to Hill Rd. Turn
left on Hill Rd. Proceed 1.2
miles to sale on left. From
Rt. 340 E. of Intercourse
take New Holland Rd. 2.5
miles to Hill Rd., right on
Hill Rd. at sale on left. Mel
Hoover, owner.

TUES. JULY 25 - 9AM
Quilt, craft & buggies. A&C
Dffenbach Auction, Inc.
100 W. Jackson St., New
Holland, Pa.

WED. JULY 26 - 9AM Quilt
& Craft. A&C Dffenbach
Auction, Inc. 100 W. Jack-
son St., New Holland, Pa.

FRI. JULY 28 - 1:30PM
State Graded Feeder Pig
Sale. Carlisle Livestock
Market, Inc., Exit 12 off I-81
turn South then left onto
Alexander Spring Rd.,
249-4511.

AUGUST

WED. AUG. 2 - 6:30PM
Winross Trucks & Toys.
A&C Dffenbach Auction,
Inc. 100 W. Jackson St.,
New Holland, Pa.

SAT. AUG. 5 - Mel's
Stables. at 834 Wallace
Rd., New Holland, Pa.
From Rt. 23 in New Hol-
land, go S. on Brimmer
Ave., go 2 miles S. on New
Holland Rd. to Hill Rd. Turn
left on Hill Rd. Proceed 1.2
miles to sale on left. From
Rt. 340 E. of Intercourse
take New Holland Rd. 2.5
miles to Hill Rd., right on
Hill Rd. at sale on left. Mel
Hoover, owner.

FRI. AUG. 11 - 9AM Farm
equip, tractors & farm sup-
plies. A&C Dffenbach Auc-
tion, Inc. 100 W. Jackson
St., New Holland, Pa.

FRI. AUG. 11 - 1:30PM
State Graded Feeder Pig
Sale. Carlisle Livestock
Market, Inc., Exit 12 off I-81
turn South then left onto
Alexander Spring Rd.,
249-4511.

FRI. AUG. 11 & SAT. AUG.
12 - Martin's Annual Sum-
mer Auction of Horse
drawn carriages, sleighs
and antiques. At Leb. Area
Fairgrounds, Leb., Pa. Mar-
tin Aucts.

TUES. AUG. 15 - 8PM
Feeder Cattle Sale. Carlisle
Livestock Market, Inc., Exit
12 off I-81 turn South - then
left onto Alexander Spring
Rd. 249-4511.

PUBLIC AUCTION

Farm Machinery- Grain Truck
Two International Diesel Tractors - 25 Milk Cans
Cattle Truck - N.H. 679 Manure Spreader
Saturday, February 25, 1995
9:30 AM

Auction held on the farm in Chester County, PA, for
Omar & Dorcas Smoker,
1 mile West of Parkesburg. At jct. of Route 10 and Route 30 go
South on Route 10. 1st road right, Leike Road, follow to sale.

Farm Equipment Mostly All Bought New On Smoker Farm
Tractors - Trucks

International 1066 Diesel 4094 orig. hours, turbo cab, dual hyd., dual
wheels, 20-8-38; International 986 diesel, 3000 orig. hours, cab, radial
tires; both tractors have wide front, front weights; 1974 Chevy truck,
grain bed, 16 ft. dump, 4 ft. sides, 1100 hrs. on rebuilt engine; Ford
350 truck with Eby 12 ft. aluminum cattle bed; both trucks gas, stan-
dard shift; tractor chains; log chains.

Hay Equipment

New Holland 489 - 9 ft. haybine, floating head, ex. cond.; Grimm hay
tedder; New Holland 258 rake; New Holland 276 hayliner baler with
thrower; 3 bale wagons, 16 ft. Bale King, 1-14 ft., 1-16 ft. wagons; New
Holland 36 ft. bale elevator; Smoker 24 ft. bale elevator; New Holland
gear flat bed wagon; International 100 - 7 ft., 3 pt. bar mower.

Grain Equipment- Hammer Mill

New Idea 2 narrow row corn picker; 16 roller husking bed; 2 New Holland
- Farmec grain bin wagons; International 10 - 16 discs openers grain
drill; E.C.O. - 60 ft. 8 in. portable grain auger, P.T.O. drive; International
40 flail chopper; corn drag; International 1150 hammer mill.

Planting - Tillage Equipment

John Deere 7000 - 6 row corn planter; Krause 2800 - 9 shank chisel
soil saver plow; International 710 - 6 bottom semi-mounted auto reset
plow with cover boards; Krause 16 ft. fold up disc harrow model 1577
with mid west levelers; 22 ft. vibra shank field cultivator fold up, Brillion
16 ft. 4 in. axle single cultilpucker; Brillion 12 ft. 4 in. axle single cultil-
pucker; Brillion 12 ft. transport cultilmulcher; 3 pt. 2 row cultivator;
New Holland 679 manure spreader, tandem axles, hyd. tail gate.

Barn - Shop Tools - Wood Splitter

Matador orchard sprayer; Twentieth Century welder; Roper wood
splitter with engine; chain hoist; International socket set; handyman
jack; hand tools; feed carts; shovels; digging iron; bolts - shop inven-
tory; model 35 generator, portable P.T.O.; 25 milk cans; cattle gates;
97,000 B.T.U. Redline heater; more items not listed.

Food on Premises

Auctioneer's Note:

Tractors and 95% of machinery bought new and shed kept.

Auctioneer
Steve
Steve Jr. Petersheim
610-593-AUCT
AU 001349L



PUBLIC SALE

60 ACRES LIMESTONE DAIRY FARM,
FARM EQUIPMENT, CROPS,
HOUSEHOLD GOODS

TUES., FEB. 14, 1995
10:30 A.M.

Located at 250 Witwer Rd., East Earl,
Lancaster Co., PA. From Blue Ball traffic
light take Rt. 322 East one mile, turn right
onto East Earl Rd., proceed 1/2 mile to Witwer
Rd., turn left, first farm on right. Watch for
yellow sale signs.

A certain tract of land consisting of approx. 60
acres, 48 acres tillable, balance in pasture.
Zoned agricultural and residential. Erected
thereon a:

NINE ROOM, 2 1/2 STORY LOG HOUSE
With new siding and storm windows.

12'x60' HOUSE TRAILER with addition.
**36 STANCHION FRAME FOUR BAY
BANK BARN.** Box stalls. Horse stalls. Cement
block milk house with 635 gal. Jamesway bulk
tank. 20'x48' frame heifer barn. Block two car
garage and box stalls. Frame tobacco shed with
four acres capacity.

10'x35' AND 16'x55' STAVE SILOS
Well with windmill and reservoir tank.

**OPEN HOUSE: Saturdays, January 28 and
February 4 from 1:00 p.m. to 4:00 p.m.**
TERMS: 10% down day of sale, balance
March 20, 1995. Real Estate At 1:00 P.M.
Ed Miller, Atty.

FARM EQUIPMENT - CROPS

Cat D2 Crawler With P.T.O. And Hyd.; Case
1737 Skid Loader; New Holland 667 Tank
Spreader; New Idea 362 Spreader With Hyd.
End Gate; John Deere Transport Disc; 10'
Brillion Cultipacker; John Deere 494A Corn
Planter; Oliver 13 Hole Grain Drill; New Idea
Rake; Int. Single Corn Head; New Idea Forage
Wagon With 8 Ton Gear; John Deere 7'x16'
Flat Bed Wagon With Sides; Gravity Bin;
Smoker 32' Elevator; Corn Drag; 4"x18' Auger
With Motor; 10" Table Saw, Like New; 6"
Jointer, Like New; Planer; Band Saw; Belt-Disc
Sander; Cedar Boards; Grindstone With Motor;
Pump Jack; Cement Mixer With Motor; Paint
And Tree Sprayer; Locust Posts; Firewood;
Scrap Iron; More Farm Related Tools. 150 Ton
Silage; 3 Ton Roasted Soybeans; 4 Ton Alfalfa
Hay; 2 Ton Straw; Sawdust.

BARN EQUIPMENT

Patz 210' Counter Clockwise Barn Cleaner
With 14' Chute; 140' Gutter Grates; 36" Fans.
Stainless Steel 2" Pipe Line, 1/2" Vac. Line, 4-
Bomatic Milkers, 80 Gal. Electric Water
Heater, Stainless Steel Tub, Will All Be Sold
As A Unit.

HOUSEHOLD GOODS

Refrigerator; Wardrobes; Four Gun Rack; 40
Gal. Electric Water Heater; Cream Separator;
Copper Kettle; Meat Grinder And Slicer;
Sausage Stuffer; Ladies And Forks; Stirrers;
Several Crocks; Green Jars, Some Dated; Coal
Bucket; Twin Tubs; Plus More.

Auctioneers Nevin Martin & Sons
AU-1078-L

Sale For
Ammon And Susanna Nolt
717-355-9683 Lester

Not Responsible For Accidents Lunch Served
- No Out Of State Checks