

**Central U.S. Carlot**

**Pork Report**  
Tuesday, February 1, 1995  
Report supplied by USDA

CENTRAL U.S. CARLOT PORK REPORT FOB OMAHA BASIS INCLUDES MAJOR PRODUCTION AREAS IN MIDWEST AS OF 3 P.M. COMPARED MONDAY'S 3:00 PM CLOSE: FRESH LOINS 1.00-3.00 HIGHER; BUTTS MOSTLY STEADY; SKND. HAMS 2.00-3.00 LOWER; SDLS. BELLIES 2.00-3.00 LOWER. TRADING MODERATE, LIGHT TO MODERATE DEMAND AND MOSTLY MODERATE OFFERINGS.

**LOADS PORK CUTS: 84.6**  
46.0 LOADS TRIM/PROCESS PORK/  
PORK CUTS  
**LOINS, REGULAR, FRESH**  
14-18 LBS., 10.5 LOADS, RANGE 97.00-104.00, WGHTD. AVG. 101.38.  
1/2" TRIM 14-18 LBS., 8.0 LOADS, RANGE 116.00-123.00, WGHTD. AVG. 120.00.  
1/4" TRIM 14-18 LBS., 2.5 LOADS, RANGE 130.00, WGHTD. AVG. 130.00.  
18-22 LBS., \* RANGE 87.00, WGHTD. AVG. 87.00 C.  
1/2" TRIM 18-22 LBS., RANGE 103.00, WGHTD. AVG. 103.00 C.  
COMBOS 22 LBS. AND UP, 1.0 LOADS, RANGE 55.00, WGHTD. AVG. 55.00.  
**LOIN, BNLS CNTR CUT**  
5-9 LBS. STRAP-ON, RANGE 224.00, WGHTD. AVG. 224.00 E.  
5-9 LBS. STRAP-OFF, 1.5 LOADS, RANGE 241.00, WGHTD. AVG. 241.00.  
**TENDERLOIN**  
1.25 LBS. AND DOWN, RANGE 313.00, WT. AVG. 313.00 A.

**PICNIC, FRESH**  
SMKR TRM, RS, COMBO, RANGE 41.00, WGHTD. AVG. 41.00 D.  
SMKR TRM, SS, BOXED, 2.0 LOADS, RANGE 47.00, WGHTD. AVG. 47.00.  
COMMODITY 4-8 LBS., RANGE 28.00, WGHTD. AVG. 28.00 D.  
**BOSTON BUTT**  
4-8 LBS., \* 5.5 LOADS, RANGE 45.00-47.00, WGHTD. AVG. 45.73.  
1/4" TRIM 4-8 LBS., 5.5 LOADS, RANGE 63.00-65.00, WGHTD. AVG. 63.73.  
COMBOS 8 LBS. AND UP, RANGE 35.00, WGHTD. AVG. 35.00 D.  
**SPARERIB, FRESH**  
1.5-3.5 LBS., 1.5 LOADS, RANGE 93.00-95.00, WGHTD. AVG. 93.67.  
3.5-5.5 LBS., RANGE 71.00, WGHTD. AVG. 71.00 E.  
5.5 LBS. AND UP, RANGE 35.00, WGHTD. AVG. 35.00 D.  
**SPARERIB FROZEN**  
5.5 LBS. AND UP, RANGE 35.00, WGHTD. AVG. 35.00 D.  
**LOIN BACKRIB (BOXED) FRESH/FRZN**  
1.75-2.00 LBS. AND DOWN, RANGE 275.00, WGHTD. AVG. 275.00 E.  
1.75-2.00 LBS., 0.13 LOADS, RANGE 232.00, WGHTD. AVG. 232.00.  
**LOIN BACKRIB (COMBOS) FRESH/FRZN**  
1.75 LBS. AND DOWN, 0.50 LOADS, RANGE 258.00, WGHTD. AVG. 258.00.  
**HAM, SKINNED, SELECTED FRESH** 17-20 LBS., 13.0 LOADS, RANGE 54.00-55.00, WGHTD. AVG. 54.46.  
**FRESH** 20-26 LBS., 23.0 LOADS, RANGE 47.00-53.00, WGHTD. AVG. 49.09.  
**HAM SKINNED, COMMODITY FRESH** 17-20 LBS., 1.0 LOADS, RANGE 54.00, WGHTD. AVG. 54.00.  
**FRESH** 20-26 LBS., 6.0 LOADS,

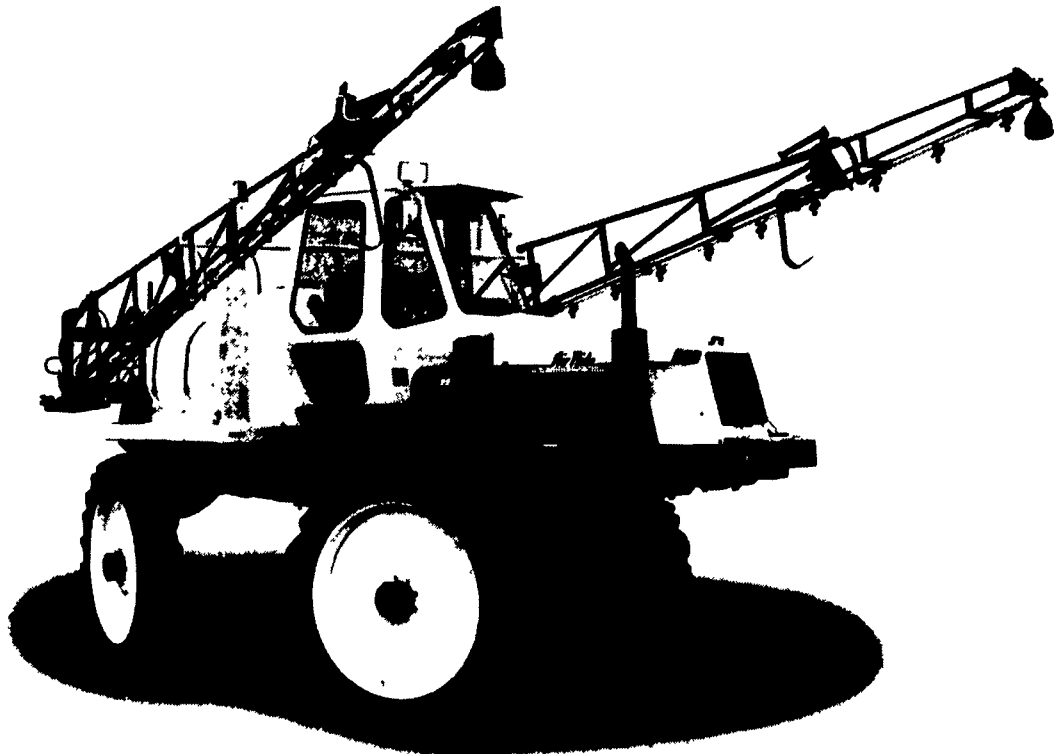
RANGE 48.00, WGHTD. AVG. 48.00.  
**FRESH** 32 LBS. AND UP, RANGE 46.00-49.00, WGHTD. AVG. 47.00 E.  
**BELLY, SDLS SKIN-ON, FRESH**  
**FRESH** 10-12 LBS., RANGE 34.00, WGHTD. AVG. 34.00 A.  
**FRESH** 12-14 LBS., 5.0 LOADS, RANGE 36.00-38.00, WGHTD. AVG. 37.20.  
**FRESH** 14-16 LBS., 8.0 LOADS, RANGE 38.00-40.00, WGHTD. AVG. 38.81.  
**FRESH** 16-18 LBS., 2.0 LOADS, RANGE 38.00-39.00, WGHTD. AVG. 38.50.  
**FRESH** 18-20 LBS., 3.5 LOADS, RANGE 36.00, WGHTD. AVG. 36.00.  
**FRESH** 20-25 LBS., 0.5 LOADS, RANGE 24.00, WGHTD. AVG. 24.00.  
**PORK TRIMMINGS/ BONELESS PROCESSING PORK (CHEMICAL LEAN)**  
COMBO 42% FRESH, 14.0 LOADS, RANGE 21.00-22.00, WGHTD. AVG. 21.11.  
BOXED 42% FROZEN, 1.0 LOADS, RANGE 25.50, WGHTD. AVG. 25.50.  
COMBO 72% FRESH, 20.0 LOADS, RANGE 32.00-33.00, WGHTD. AVG. 32.90.  
BOXED 72% FROZEN, 1.5 LOADS, RANGE 38.00, WGHTD. AVG. 38.00 A.  
BOXED 72% FROZEN, 1.5 LOADS, RANGE 38.00, WGHTD. AVG. 38.00.  
**BONELESS PICNIC MEAT**  
COMBO 72% FRESH, 8.0 LOADS, RANGE 39.00-40.00, WGHTD. AVG. 39.13.  
BOXED 72% FROZEN, UNQUOTED.  
**SKINNED JOWLS**  
COMBO FRESH, 1.5 LOADS, RANGE 20.00, WGHTD. AVG. 20.00.  
BOXED FROZEN, RANGE 26.00, WGHTD. AVG. 26.00 C.  
NOTE! (\*) REFLECTS 1/2" OR 3/4"

**TRIMMED PRODUCT BROUGHT BACK TO A REGULAR COMMODITY BASIS.**  
ABCDE AFTER QUOTES REPRESENTS DAYS SINCE LAST ACTUAL MARKET TEST. QUOTES ARE DROPPED AFTER 5 DAYS OF NO TEST OR BEFORE IF THEY NO LONGER REFLECT CURRENT MARKET CONDITIONS.  
**PORK CARCASS CUTOUT WEDNESDAY, FEBRUARY 1, 1995**  
ESTIMATED GROSS CUTOUT VALUES OF A 175 LB. HOG CARCASS BASED ON USDA CUTTING YIELD TESTS AND CARLOT PRICES. WEDNESDAY'S CARCASS GRADES AND PRICES PER CWT.:  
US#1 56.91, CHANGE FROM TUESDAY'S VALUE -0.72; US#2 55.26, CHANGE FROM TUESDAY'S VALUE -0.72; US#3 53.62, CHANGE FROM TUESDAY'S VALUE -0.70; US#4 51.97, CHANGE FROM TUESDAY'S VALUE -0.70.  
TODAY'S CALCULATIONS FOR US#2 175 LB. PORK CARCASS:  
SKINNED HAMS, 14-20 LBS., 21.01% OF CARCASS, 54.50 FOB VALUE, -3.00 CHANGE FROM TUES.; LOINS, 1/2" TRIM, 14-22 LBS., 20.33% OF CARCASS, 120.00 FOB VALUE, 1.25 CHANGE FROM TUES.  
BELLIES, SDLS, 12-14 LBS., 13.90% OF CARCASS, 38.00 FOB VALUE, -2.00 CHANGE FROM TUES.; SPARERIBS, 3.5DN LBS., 3.03% OF CARCASS, 93.25 FOB VALUE, -1.75 CHANGE FROM TUES.  
PICNICS, 8-12 LBS., 10.31% OF CAR-

CASS, 27.75 FOB VALUE; BUTTS, 1/4" TRIM, 4-8 LBS., 7.25% OF CARCASS, 62.50 FOB VALUE.  
JOWL, 2.85% OF CARCASS, 21.50 FOB VALUE; NECKBONES, 1.52% OF CARCASS, 9.00 FOB VALUE.  
FEET, 1.05% OF CARCASS, 18.00 FOB VALUE; TAILS, 0.22% OF CARCASS, FOB VALUE 39.00.  
TRIM 72%, 2.19% OF CARCASS, 33.00 FOB VALUE, -0.50 CHANGE FROM TUE.; LARD 10.85% OF CARCASS, 20.00 FOB VALUE.  
TOTAL CARCASS 94.51%. US#2 CARCASS VALUE PER CWT. 55.26.  
NOTE: VALUE MAY CHANGE WITHOUT ADEQUATE TEST.

**Lebanon Valley Livestock**

**Fredericksburg, PA**  
Tuesday, January 31, 1995  
Report supplied by Auction  
STEERS: 39. BEEF COLORED STEERS 1210-1670 LBS. 61.75-67.75; HOLSTEIN STEERS 1230-1420 LBS. 62.75-66.75; SELECT 1220-1400 LBS. 58.25-62.25; STANDARD 1230-1570 LBS. 48.00-50.50.  
HEIFERS: 15 HEAD. CHOICE 1000-1260 LBS. 63.50-67.50; SELECT 1050-1575 LBS. 56.75-59.75.  
COWS: 91 HEAD. BREAKING UTILITY AND COMMERCIAL 44.26-46.50; CUTTER AND BONER UTILITY 42.50-44.50; CANNER AND LOW CUTTER 39.00-41.75; SHELLS 37.50 DOWN.  
BULLS: 9 HEAD. YG#1 1620-1800 50.75-54.50; YG#2 1470-1615 LBS. 46.50-49.75.  
CALVES: 118 HEAD. GOOD 110-125 LBS. 47.00-52.00; STANDARD AND GOOD 70-105 LBS. 35.00-40.00; UTILITIES 60-80 LBS. 25.00-35.00; YG#1 HOLSTEIN BULL CALVES 95-110 LBS. 90.00-120.00; #2 BULL CALVES 90-110 LBS. 75.00-95.00; #1 HOLSTEIN HEIFER CALVES 90-120 LBS. 147.00-175.00; #2 HOLSTEIN HEIFER CALVES 80-85 LBS. 110.00-125.00; BEEF BULL CALVES X HEIFERS, 1 AT 85 LBS. AT 125.00.  
SOWS: 17 HEAD. US#1&3 300-335 LBS. 28.00-32.50; #2&3 300-475 LBS. 26.00-28.50; MEDIUM 295-435 LBS. 22.00-24.50.  
COUPLE BOARS 300-430 LBS. 15.50-18.50.  
HOGS: 65 HEAD. #1&2 218-250 LBS. 36.50-40.50; #1&3 293 LBS. 39.50; #2 AND 3 230-290 LBS. 32.50-37.00.



**With the high cost of today's pesticides, can you afford sloppy application?**  
*Willmar Air Ride™ lets you apply 1/2 ounce per acre at 12 mph.*

Today's post-emerge herbicides and insecticides are so powerful they're applied at almost unbelievably low rates. Like 1/2 ounce per acre in solution. That means you need an applicator as precise as the chemistry. And, because timing with these new products is so critical, you need a self-propelled applicator nimble enough to get into fields even in the mud.

For dependable application of today's sophisticated pre-emerge and post-emerge chemicals, more custom applicators and large farmers rely on Willmar Air Ride. Here are just some of the reasons:

- Unequaled visibility, driver comfort and convenience.
- Patented Air Bag Suspension adjusts on-the-go.
- 60 ft. boom, 600 gal. tank for more acres per day.
- Articulated steering minimizes crop damage.
- Wheel tracks adjust from the cab to fit row widths.
- Low-compaction tires grip soft ground, yet won't crush crops.
- Adjustable boom fits various crop heights.
- Reliable John Deere engine, long-term dependability.

With 50 years experience making top-of-the-line ag spreaders, we know quality when we see it. Whether we make it ourselves, or represent it for others: When you get it from Stoltzfus, it's the best you can buy.

If you believe that quality always pays, call us whenever you need fertilizer equipment and accessories. We'll show you many ways quality will pay you back.



Available regionally from:



**1-800-843-8731**

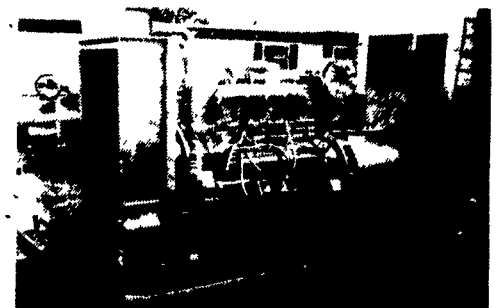
Morgantown, PA 19543  
Just off Exit 22, PA Turnpike

**HEALTH INSURANCE**

**Costs Getting You Down?**  
Give us a call

**AFFORDABLE MAJOR MEDICAL PLANS**

Deductibles from \$250-\$2500  
**THE FINANCIAL SERVICES CO.**  
Call for Details and a Quote:  
**1-800-795-7334**



**GENERATORS**

**Sales ★ Service ★ Rentals**  
★ Complete Generator Systems  
★ PTO ★ Portables ★ 2-1600 KW  
*"We Service It If You Have It And Sell It If You Need It"*

34 W. Mohler Church Rd.  
Ephrata, PA 17522

Tel: 717-738-0300  
Fax: 717-738-4329