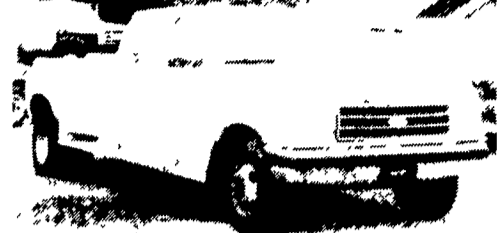


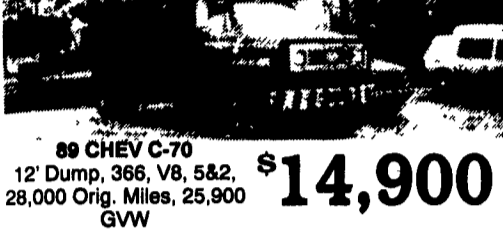
**WILLIAM H. WESSLE'S
USED CARS**
811 Route 15 Dillsburg, PA
1-800-440-4433 1-717-432-2918
Notary Public Temporary Tags



88 GMC FLATBED DUMP
366, Gas Eng., 5&2,
26,000 GVW **\$8,900**



90 FORD CREW CAB \$12,900
DUALY
460 EFI, Auto, PS, AC



89 CHEV C-70 \$14,900
12' Dump, 366, V8, 5&2,
28,000 Orig. Miles, 25,900
GVW



89 GMC-132" \$7,900
DIESEL CAB & CHASSIS
179,000 Miles



85 GMC 7000 36' \$12,500
PLATFORM HEIGHT
8.2 Diesel Allison, Auto



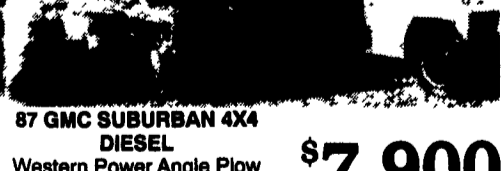
88 FORD F250 4x4 \$8,900
351 V-8, Auto, 99,206 Miles,
AC, "R" Title



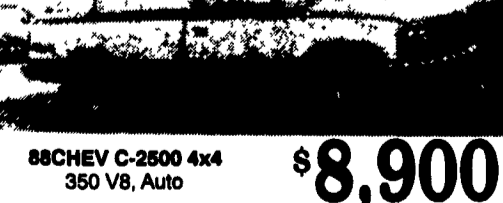
88 FORD F250 4x4 \$6,900
Work Truck, 142,000 Miles
8,800 GVW



84 FORD F600 \$8,900
FLATBED DUMP
370 V-8, Gas, 5&2, 19,200 GVW



87 GMC SUBURBAN 4X4 \$7,900
DIESEL
Western Power Angle Plow
213,000 Miles, Auto, PSAC



88 CHEV C-2500 4x4 \$8,900
350 V8, Auto

**WILLIAM H. WESSLE'S
USED CARS**
811 Route 15 Dillsburg, PA
1-800-440-4433 1-717-432-2918
Notary Public Temporary Tags

Jeep Wagoneer 1981 4X4
360 Auto. Engine and
Transmission Rebuilt. For
Parts \$625.
(610)692-5871.

Sale or Trade: 30-ton drop
deck equipment trailer w/
ramps, 23' deck, 12' neck,
very good condition, \$3000
OBO Or will trade for stor-
age trailers, must be deliv-
ered to Southern Ocean
Co., NJ. 609/597-3538.

Stahl 108" dual wheel ser-
vice body, black in color,
\$1,100. Bradford. Call
early AM or leave mes-
sage, (717)364-5460.

**1983 Ford
L9000**
10-wheeler
dump truck.
240 Cummins,
7 speed, lo-hole,
44 rears, 14' bed.
\$20,000
(610)287-9217

FOR SALE
1979 Big Wheels
Full Floater Spray
Truck. 1000 gallon
S.S. Tank, 60'
Booms, Radar
Gun and Monitor.
\$8,900 or B.O.
Call
(610) 274-8283

TRUCK CRAFT

PICKUP INSERT DUMPER
For FREE brochure, call toll free 24 hr.
1-800-755-3867

Huntingdon Equipment

Rentals Available **GOOD USED EQUIPMENT**

Huntingdon Valley, PA • 215-672-9667 • 1-800-543-3833 • Eddie



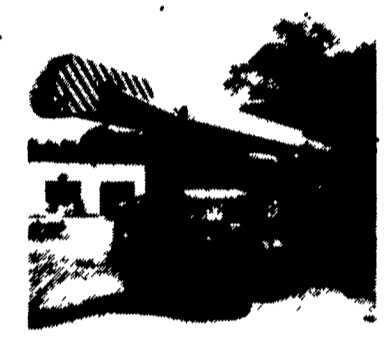
1985 F-600 8.2 Diesel, Auto, 5 Man Cab, Utility With Rollup Door On Rear, Clean, Low Mileage, 1 of 3.



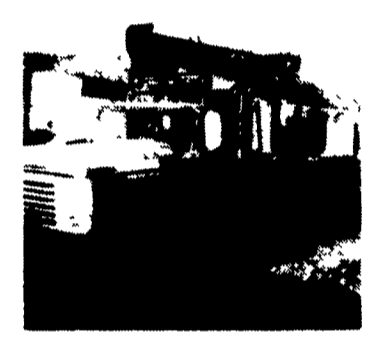
1970 Ford 800 V8 5 Speed with Aux. Trans, 39,000 GVW, VAC Brakes 13'4" Fran Fleet Maintained, 73,000 Miles.



International Presser Digger This Unit is Ready To Work, Winter Sale Price \$6,500



Holan 70' Double Bucket 75' working height mounted on 1981 Western Standard, 6x6 Flatbed, CAT 3208, Auto.



Need a Lift? We Have A Large Selection Of Boom Trucks Up To 14,000 lbs. Cap. Some With Post Diggers.



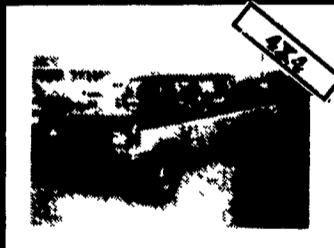
Bucket Trucks 28' to 65' Gas and Diesel Call For Details.

DIGGER DERRICKS/AERIAL BUCKETS/UTILITY EQUIPMENT

OVER 90 TRUCKS

Bobby Gerhart's Truck World

2400 E. Cumberland St.
Rt. 422 Lebanon, PA 17042
717-273-7999



90 FORD F250 S.C. 4X4
7.3 Diesel, Stck, Long Bed,
60,000 Mi., Bronze/Mocha
#F293



93 CHEV. G-30 CUBE VAN
12 Ft. Box, 350 V8, AT, AC,
37,000 Miles, Like New
#C-232



'92 DODGE POWER RAM 250
Cummins Turbo Diesel, 4x4
Extend Cab, Le Trim, 5-Spd.,
Only 47,000 Miles #D-125



91 FORD F250 SUPER CAB
4x4, XLT Lariat, 351 V8, AT,
A/C, Cruise, Tilt, Heavy
Duty, Red & White #F-301



89 FORD F350 SUPER CAB, DUALY
460 V8, AT, AC, Cruise, PL, PW,
Tilt, Only 43,000 Miles #F294



89 MITSUBISHI NPR
14 Ft. Stake Body w/Liftgate, AT,
Turbo, Diesel, PS, PB, 33,000
MI., 13,000 GVW #M107



88 CHEV K-1500 4x4
w/Power Angle Plow, AT,
AC, V8, Ready For Snow,
2 To Choose From #C222



80 INT. DUMP W/ PLOW
360 Gas, 26,000 GVW, 12 Ft.
Blade Ready for Snow, #I-108



89 CHEVROLET K3500 CREW CAB
454, Auto, AC, PW PL
Cruise, Dually Silverado,
Black/Silver, #C233, 52300
Miles



81 FORD F350 DUALY
400 CID, Stck, Great Farm
Truck, Bronze, #F-302
\$3,600



93 CHEV C3500
Hi-Top Walk-In Utility Body,
350 V8, AT, AC, Only 6,800
Miles #C-239



94 FORD SUPER DUTY
Chassis w/Flatbed, AT, AC,
7.3 Turbo Diesel, XL, Trim
#F-303