



1976 Merrit 48' Double Deck Pot
Extra Nice for Year \$7,500
Winchester, VA.
(304) 876-6653 evenings

Air slide, 5th wheel, \$475.
M-F, 8-5PM. York Co.
717-292-5696.

Aluminum Bed, 17' w/
Hoist, \$2000.
(814)983-2861.

Chevy '68, 1 ton, 12' stake
body w/dump hoist. 292
motor, just installed.
(717)993-2814.

Diamond Rio Dump Truck
single axle, air brakes, 10
speed, plow mount, excel-
lent. Will sacrifice.
(610)589-4202.

For Sale: 1972 Chevy truck
w/12' wooden cattle bed
with aluminum roof and
diamond plate floor, built
by Eby, has roll up side
door with pull out ramp,
shed kept, good condition,
\$4500 OBO. Dauphin Co.
717/944-3690.

For Sale: Reconditioned
Caterpillar Ford V636
diesel engine plus fuel
pump, \$3400 OBO.
610/323-3700.

Int. 1900S, 28' steel bed,
just used for hay, \$4500
OBO. 410/833-1847.

'91 Ford XL E350 club
wagon, 15 passenger, 351
EFI, auto, PB, PS, dual air,
AM-FM cassette stereo,
new radials, 49,000 miles,
dark blue, \$11,500.
717-733-2873

Lancaster Farming, Saturday, February 4, 1985-C37

'91 Ford F150 Super Cab,
300 EFI, auto, PS, PB, air,
AM-FM, dual tanks, 6,250
GVW, 37,000 miles, dark
blue, \$11,900.
717-733-2873

FOR SALE: 238 Detroit en-
gine, 2-sets of IH tandems
w/Hendrickson suspen-
sion, RTO9513. Myer-
stown. 717-933-8943.

MARTIN'S USED TRUCKS & EQUIPMENT INC.

560 Lampeter Rd., Lancaster, Pa. 17602
(717) 392-6266 (717) 299-6200



1984 GMC Brigadier - S/A
Tractor -NTC 240 Cummins - 7
spd. P/S Would Make A Great
Dump Truck - Low Miles.



1977 CO Ford 8000 Remanufactured
3208 CAT 5+2 Spd., 39,000 GVW
With 3400 Gal. 2 Comp. 2 Reels &
Meter, Vapor Recovery & SCULLY
TECH Weld Tank - Ex. Condition:



1983 R688 ST MACK-350 MACK
Motor - RTX 15 Spd. Fuller With
Deep Reduction - Air Ride Cab -
Low Miles - Truck Is Very Clean



1983 LN 8000 S/A Tractor - NTC
240 Cummins, 7 Spd., P/S, Very
Clean



1977 C01950 -DT 466 - 5+2 Spd.,
35,000 GVW, A/B, P/S, 14 Ft. Cab
To Axle-Clean Truck



1985 Ford F 700 -8.2 Diesel - 5
Spd. - 22,000 GVW - P/S - 93,000
Miles - Truck Is Like New - Will
Take 14 Ft. Body

CASH FOR USED DIESEL TRUCKS!

WE NEED 1/2 TON TO ONE TON:

- FORD DIESELS
- SUPERCABS
- CREW CABS
- DODGE CUMMINGS
- 2WD or 4x4
- DUALIES
- DUMPS
- UTILITY BODY
- FLAT BEDS
- CAB & CHASSIS
- SUPER DUTIES

LOW MILEAGE ONLY PLEASE

Before you sell or trade your diesel
in somewhere else for **LESS.**

CALL US!

**We Pay More for Used Diesel
Trucks Than Anyone.**

TRY US!

717-949-2000



RD 7, Box 406
Lebanon, PA
17042

Ask for Smokey or Key **KELLER BROS.**

SALE 1979 IH SALE



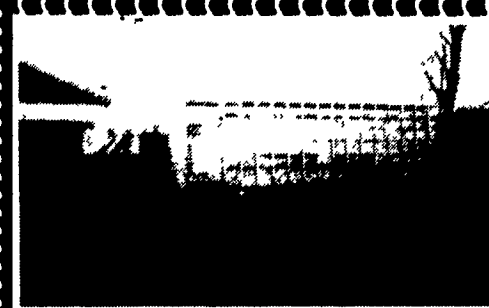
18' Bulk Blower Truck

3208 Cat, New Clutch & Ejectors,
10 Speed, 50,000 GVW

Lebanon County, PA

717-866-6015

7:30 to 5 Weekdays



1986 C-70 24 Ft. Double Deck

Eby Box, 427 Gas, 5 + 2 Speed,
44,900 GVW, Air Brakes

(717) 966-1610

Keystone Peterbilt, Inc.

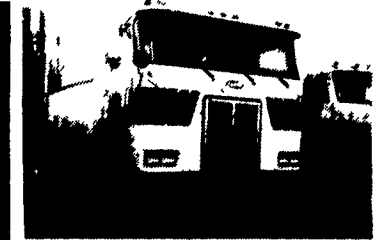
1467 Manheim Pike • P.O. Box 4396 • Lancaster, PA 17604

1-800-
243-2458



717-
299-6630

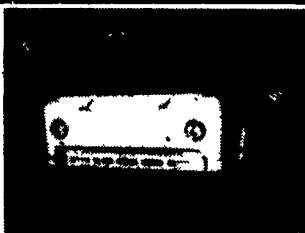
Trucks - New and Used



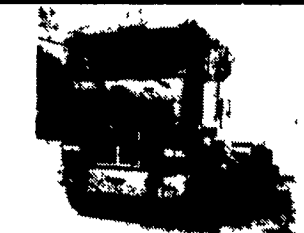
New 1987 PETERBILT Truck Tractor Model 362
Cabover Rockwell FF-941 Front Axle Eaton DS-381
Rear Axle Cummins FNC350 Engine, Fuller RTO-
14609 transmission Goodyear tires, 285/75R24.5



1985 FORD LN9000, TT 350
Cummins, RT14609, SQ100 Rears on
4 Spring, 22.5 Rubber on Spokes, PS,
Clean **\$12,900**



1978 FORD C8000, Cab & Chassis,
3208 CAT, 5 Speed, 2 Speed,
10.00x20 Radials, PS, 35,000 GVW
\$4,900



1986 PETERBILT TT, 3406B CAT,
RT14609, DS381 Eaton in 4.33 Ratio,
24.5 Low Pros on Budds, PS, New
Paint **\$13,900**



1987 INTERNATIONAL 9670 TT,
350 Cummins, RT11609, SQ100
Rears on 4 Spring, 24.5 Radials, PS,
Budds, PS, Good Value **\$13,900**



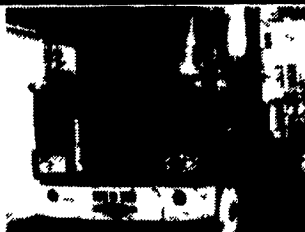
(2) MACK F MODEL, Day Cab TT,
237 Max, 5 Speed, R-170 Rear on
Steel Budds, Good, Inexpensive Units
\$3,500



1988 INTERNATIONAL S1954
W/22' VAN BODY, DT466, 6
Speed, 22.5 Radials on Budds, PS,
32,800 GVW, Good Buy at **\$14,900**



1979 INTERNATIONAL S2275 TT,
Silver 6V92TA, 9 Speed, 38 IH Rears
on 4 Spring, 22.5 Low Pro Radials, PS,
New Paint, A Real Bargain At **\$6,900**



1981 MACK F686 SA, TT, 300
Mack, RT11509, 23,000 Rear,
Budds, PS, Good Value **\$4,500**



10' DUMP BODIES, 1/2 Cab
Shield, 28" Sides, 38" Ends, Some
with Coal Chute, HD Hoist, Good
Selection **\$550 and Up**



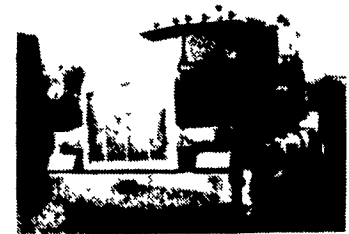
1971 MACK U685 SA, TT, 237
Maxi, 5 Speed, 23,000 Rear, 22.5
Rubber on Spokes, Good Runner
\$3,000



1984 INTERNATIONAL 4200
TT, 6V92TA Silver Detroit, 9
Speed, 40,000 Rockwell Rears on 4
Spring, 22.5 Low Pros on
Aluminum Budds, PS, AC, Classy
Unit **\$13,900**



(3) 16' Flat Beds, 1 Lumber
Body with Rollers Priced from
\$400 to \$950



1989 PETERBILT 378 Conventional, wheel-
base 235", Faton DS402 40,000 lbs.; 3406B
50 ATAAC 425 @ 1800, 1450 @ 1200; Jacobs
Brake 3406B; Fuller RTO 15618 18 Speed;
Alum Cab 119" BBC Fbrgs Hood; 48" Sleeper



1986 PETERBILT 349, Eng L10300; Trans.
RT 11609A, R. Axle DS381, 3.55, Air Ride



1989 FREIGHTLINER FLT-86, 2 Axle Tractor,
3406 Eng, RTX1609B Trans., RS23 1160 R
Axle, Spring Susp.



1984 KENWORTH W900, Eng, NTC 400,
Trans, 13 Speed, R. Axle 38,000 Lbs., Air
Ride



1995 MODEL 330
MEDIUM DUTY
PETERBILT Engine Cat
3116 230 HP,
Transmission Fuller
FS6306A, 6 Speed, Rear
Axle Eaton 21065S
21,000 Front Axle Eaton
EFA 12F4 12,000 Wheel
Base 190 Cab to Axle
120 Cab to End of Frame
195 33,000 GVW



FIRESTONE MOTORS, INC.

330 S. THIRD ST. • LEMOYNE, PA 17043 • (717) 763-7721