

**POLE BUILDINGS**

- Commercial
  - Storage
  - Garages
  - Horse Arenas
  - Stall Barns
- Top quality materials and workmanship. References available.

800/842-0276  
Ask for Chris

★ **ALLWOOD STRUCTURES** ★  
**POLE BUILDINGS**



**STANDARD BUILDINGS**

24x32x8	\$ 4,800
24x40x8	\$ 6,000
30x40x8	\$ 7,500
32x64x10	\$11,800
40x80x12	\$17,300

**LOFT BUILDING**

24x32x8	\$ 9,550
24x40x8	\$11,100
30x40x8	\$13,800
32x64x8	\$19,100

**ERECTED PRICES** (Includes slider and service door)

We specialize in:

Horse Barns, Riding Arenas, Garages, Machine Sheds or Custom Built To Your Specifications

**CALL FOR FREE ESTIMATE AND BROCHURE**

**1-800-247-0241**

**WHOLESALE**

Truck load quantities of CCA Southern yellow Pine treated round fence posts 6 1/2' & 8' lengths 30 year warranty Call or write for prices

**EDISTO WOOD PRESERVING**

RR 1, Box 44-A  
Olar, SC 29843  
803-368-3011  
FAX 803-368-8026

**5 GRAIN EQUIPMENT**

13,000 bushel grain storage bin, circulating air fan, unloading auger, \$1,500 (410)795-9536.

(2) 2000 lb. Fairbank Morris suspended bin scales, air valves, air lock & 20hp blower. (717)393-2992.

5000 gal. fiberglass vertical tank w/top vent & manhole access. (717)393-2992.

Butler 24' grain bin, 8 ring, no floor, 6,500 bu. LebanonCo, (717)274-5575.

Grain Bin: 25,000 bushel, GSI grain bin Ready to load on your truck. Yardley, PA \$ 5,000  
(215) 493-3040  
(215)321-7995



Grain Bins  
Grain Dryers

**Sones Grain Systems**  
Jim & John

Hance Corp.  
Elevators

Check Our Prices Before You Order  
We Personally Install Everything We Sell  
717-584-2282

**Sukup**  
Stirring Machines  
Grain Cleaners

RR7, Box 470  
Muncy, PA 17756

**6 DAIRY EQUIPMENT**

For Sale, Acorn barn cleaner for parts. Also harvester weigher elevator and harvest handler elevator. 717-653-4923.

For Sale, Wriessler feed mixer, no. 230, almost new. 717-653-4923.

FOR SALE: Lots of used claws, shells, pulsators, takeoffs, meters, weigh-jars, bucket milkers, DV-300's, receiver groups, CIP's, etc. Many brands and models. "Free" UPS shipping or delivery. BUY-SELL-TRADE 15 day Satisfaction Guarantee E-ZEE MILKING EQUIPMENT, INC. "Specializing in used equipment" Gordonville, PA 17529. 717-768-7599.

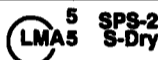
**BLACK BEAR TRUSS CORP.**

It Pays To Use MSR Lumber



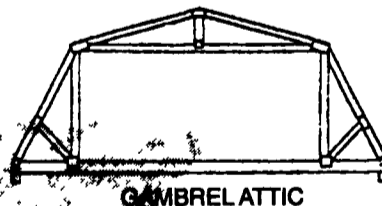
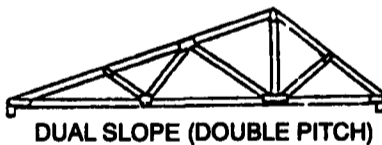
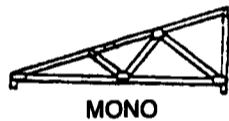
"OUR TRUSSES BEAR UP"

**MACHINE STRESS RATED**

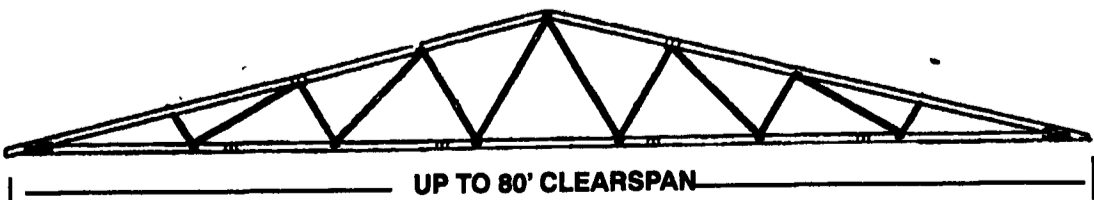


2250 f 1.9E

**40% OFF SALE ON ALL IN STOCK INVENTORY**



- ✓ On-Site in One Week
- ✓ Crane Optional with Delivery
- ✓ Custom Built with MSR Lumber
- ✓ First Quality
- ✓ Reliable Schedule
- ✓ Competitive Prices



FOR HORSE BARN RIDING ARENA COMMERCIAL RESIDENTIAL

**1-800-326-9689 or Fax (717) 998-9875**

**USED MILKING EQUIPMENT**

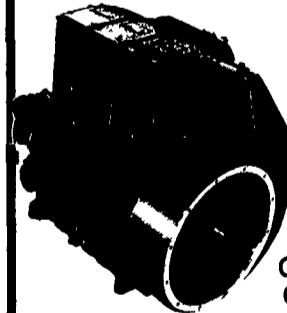
Bou-Matic Pulsators	\$85
Bou-Matic Visi-Shells	\$75
Zero Claws	\$25
Bou-Matic Weigh Jars	\$295
Bou-Matic Pulsation Control	\$195
Surge Alternating Pulsators	\$85
5 Flo-Stars w/Valve	\$195
Surge 50+ w/Balance Tank & 2 HP Motor	\$350
600 Gal. Mueller w/4HP Compressor	\$2,900
600 Gal. Zero w/Copeland Compressor	\$1,900
625 Gal. Sunset Tank w/Dual 3HP Compressor	\$900
Bou-Matic 2" Glass Receiver Group	\$1,500

**LANCASTER DAIRY FARM AUTOMATION, INC.**

1-800-422-4587  
1-717-627-4824

**LISTER PETERI**

**The HEAVY DUTY Diesel**



- Complete air cooled- Not Oil cooled
- Flywheel fan cooled- No Blower Belt
- Timing gears- No Timing Belt
- Can be hand cranked Compression release

A Proven Diesel Engine for Long Life



Distributor for Lister/petter and Lombardini Diesel Engines 6-8-12V Regulated CHARGE-MASTER Battery Charger

**HOOVER DIESEL SERVICE**

255 Mascot Rd., Ronks, PA 17572  
(717) 656-3322 (717) 295-1729