

FORKLIFTS

Used

Buy • Sell • Lease



TRACTOR LIFT

Big Tires, Side Shifter, 6000 Lb. Cap.
Good Condition

- * Clark, 2000 Lb. Propane.....\$2,500
- * Hyster 2000 Lb., Air Tires.....\$1,950
- * Yale 3000 Lb., Propane.....\$2,800
- * Clark, 4000 Lb., 83/189, Triple Mast.....\$2,000
- * A-C 4000 Lb., Propane.....\$4,850

Universal Equipment Inc.
(717) 533-7377

FORKLIFTS

2,000 TO 15,000 LB

\$1,000 TO \$12,000

GAS/LP-DIESEL-ELECTRIC

Cushion-Pneumatic-Rough Terrain

New Komatsu Forklifts Available

PA INDUSTRIAL EQUIPMENT

(610) 369-9778



CATERPILLAR 955L Crawler Loader
w/4-1 Bucket, OROPS
\$16,500

Heavy Equipment Loader Parts, Inc.

RD 2, Box 2230, Route 22, Grantville, PA 17028
(717) 469-0039

(800) 446-0505 FAX (717) 469-7679

Case 252, 602, 1102 Rollers Demonstrators Call For Special Pricing

- 1987 Case 580K, Canopy, Extend-A-Hoe, 2WD.....\$25,900
 - 1987 Case 480E Loader Backhoe.....\$18,900
 - 1986 Case 850D Dozer.....\$32,500
 - (2) 1985 Kabelco articulated loaders, Model 500.....Call for pricing
- Used Trailers In Stock Call For Information

Vernon E. Stup Co.

5859 Urbana Pike
Frederick, Md. 21701
301-663-3185



ALLIS CHALMERS 840
Diesel Wheel Loader w/Forks, Bucket,
Solid Tires
\$13,500

Heavy Equipment Loader Parts, Inc.

RD 2, Box 2230, Route 22, Grantville, PA 17028
(717) 469-0039

(800) 446-0505 FAX (717) 469-7679



(2) WABCO 35 Ton Trucks
380 HP Cummins Allison 5860 Auto. Trans.
\$14,500 Each

GERHART EQUIPMENT CO.

910 Brunnerville Rd.
Lititz, PA 17543

717-626-8544

WE BUY TRUCKS & TRUCK PARTS, MOTORS, TRANS & REARS

- '87 Chev 1 Ton Stake Diesel, 4 Speed.....\$6,500
- Case 750 Track Loader, Needs Track Work.....\$3,500
- '85 MR Mack Garbage Truck, 237, 6 Speed, 44 Rears.....\$9,500
- Aljon Mobile Car Crusher.....\$16,500
- 680C Case Backhoe Needs Work.....\$3,800
- Hotshot Iveco Z 220 & 48' Trailer...\$4,800 OBO
- Air Comp 170 CFM 353 Detroit.....\$2,250
- Loadstar Int. 180014' Dump. Alum. with Feed Auger & Blower....\$6,500 Will Separate

610-944-9871



JOHN DEERE 544B WHEEL LOADER
w/Side Dump Bucket, EROPS
\$21,500

Heavy Equipment Loader Parts, Inc.

RD 2, Box 2230, Route 22, Grantville, PA 17028
(717) 469-0039

(800) 446-0505 FAX (717) 469-7679

FOR NEW AND USED CONSTRUCTION EQUIPMENT PARTS AND ATTACHMENTS CALL

H.E.L.P., INC.
1-800-446-0505

Specializing in Caterpillar
Parts also available for Case,
John Deere, IHC, Fiat, Etc.

**HEAVY EQUIPMENT
LOADER PARTS, INC.**

R.D. #2 Box 2230 Route 22
Grantville, PA 17028

Need your heavy equipment welded? We weld aluminum, loader buckets, Grosser bars, cutting edges Completely portable welder and feeder, \$35 per hour Call for appointment today. Welding Contractors 410/775-7003.

Prime Mover, 2000lb., electric 24V, walk behind, \$1250 717/354-3105.

Mechanics' Specials: CAT 922-B, EROPS, D330C, side dump, Allis Chalmers TL16D, cab, new 1600x24 tires, 2yd bucket, \$4,500 each. CAT 922-B cab w/heat, 17.5x25 tires, side dump, motor and brakes rebuilt, \$10,000. Ford 6 cylinder gas ind. engine w/ Gardner Denver blower, runs good, \$1,200. Ron Coover, Shippensburg, PA, (717)532-6540.

WANT TO BUY all makes and models of construction equipment. (301) 694-6148. (301)371-9299 fax.

Walker-Turner radial saw, 3ph, 3hp, 12" blade, 26" arm, travel 717/292-6115

White 5000 lb forklift, gas, air tires, PS, 12' lift, \$5700 717-345-4882.



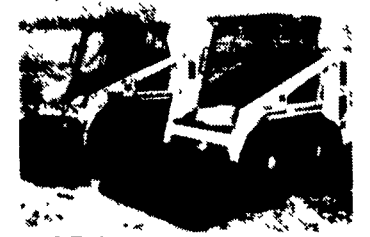
1989 Gehl 5625 new rubber, aux. hyd.



JLG 60F Manlift 8' Basket
w/Rotator, Good Condition
\$19,500



1990 Case 1840, 2800 Hr.
Good Rubber, Aux. Hyd.,
Excellent Condition



2 Bobcat 743 skidloaders
1-1989 w/1900 hr. good rubber
excellent condition, Aux. Hyd.; 1-
1988 w/cab enclosure aux. hyd.

Financing & Lease Purchase Available

Weaver's Equipment Sales

RD#3 Box 244 Milton PA
Phone: 717-742-2712 No. Sunday Calls

3

**SILOS AND
UNLOADERS**

TRAK STARS



Feed-Trak™
High-Capacity Belt Feeder

It's hard to imagine so much feeder at such a good price. Let your Starline Dealer show you why Feed-Trak is so efficient, dependable and quiet. New feeder features simple design, exclusive smooth running track and trolley system and high-capacity STARglider™ V Plow. This feeder is right on 'trak'!

Cen-Trak™
Power Drive Unloader

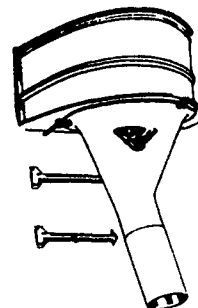
Meet Cen-Trak! The new and better concept in single-cable unloaders. Simple, dependable power drive design eliminates the problems of other high-torque, center-drive machines. You get economy and faster, high-capacity unloading with fewer trips up the silo. Only from Starline!



Built to last, priced to sell.

USED EQUIPMENT

- 26 Ft. Van Dale Unloader, like new
- 400 Roller mill, rebuilt
- 16 Ft. Unloader, good shape
- Belt Conveyor



Fiberdome

**FIBERGLASS
FUNNEL**

\$165.00

**Full Line
Parts
Department
For Starline**



DONALD R. NISSLEY

RD #1, Willow Street, PA
(Corner of Rt. 272 S. & Byerland Church Rd.)

(717) 786-7654

PARTS PRICED RIGHT DISMANTLING MOST MAKES & MODELS

OF CONSTRUCTION EQUIPMENT

Cat	IHC	Galion
Case	Michigan	Wabco
John Deere	Hough	Dynahoe
Trojan	Terex	Koehring
Drott	Hein Werner	AC/Fiat Allis

& Others

Over 600 Machines Dismantled

NATIONWIDE PARTS LOCATING SERVICE

We have three Computer Parts Locator Networks, Nationwide & Canada, ready to serve you. In less than a minute over 600 Used & New Parts Dealers will receive your parts request. Parts are located easily & at substantial savings. Try Our Services

Save \$\$\$ Parts Shipped Anywhere Direct To You. All Parts Guaranteed
"We Return All Phone Calls"

**BALANDA EQUIPMENT
CO., INC.**

P.O. Box 407 • Route 29 • Palm, PA 18070
Phone: (215) 679-3900
• Fax: (215) 679-9727

TOLL FREE: 1-800-322-8030