

# PSU Offers Satellite Dairy Nutrition Workshops

UNIVERSITY PARK (Centre Co.) — Milk producers can now

register for Penn State's popular Dairy Nutrition Workshops, sche-

duled for Feb. 2, 9, and 16. The workshops will once again be offered via satellite across Pennsylvania and in selected locations in several neighboring states.

This is the second year for these highly successful workshops, attended by more than 500 people last year. This year's sessions — expected to reach nearly 700 farmers at about 40 locations in eight states — will take participants via satellite through a feed mill, on farm tours, and even inside the rumen of a dairy cow.

The workshops will combine local hands-on activities conducted by extension agents and inter-

action with Penn State faculty via satellite at locations in Connecticut, Illinois, Maryland, New Hampshire, New Jersey, New York, Ohio, and Pennsylvania.

Sessions will feature video segments, exercises on balancing rations, and discussions on nutrition-related topics by county agents, plus a question-and-answer period featuring specialists in dairy cattle nutrition, agronomy, and agricultural engineering.

Satellite lectures by Penn State Dairy and Animal Science faculty members Larry Muller, Dick Adams, Gabriella Varga, and Jud Heinrichs will focus on feeding and managing cows in early and mid-lactation, dry cows, and heifers, with emphasis on troubleshooting metabolic problems.

Lisa Holden will look at basic pasture usage, and Virginia Ishler will discuss how to determine dry matter content of forages.

Agricultural engineer Dennis Buckmaster will showcase Penn State's new forage-particle-size separator. This equipment will provide better analysis of silages and total mixed rations.

Workshops will start at 9:30 a.m. and end at 3 p.m., with an hour for lunch. The \$30 registration fee includes the cost of a forage sample analysis. An additional charge will be made if meals are provided, but this will vary across sites. To register or for more information, contact the Extension office in your county.

## Belleville

### Livestock Auction

BELLEVILLE, PA

January 25, 1995

CATTLE 213... PDA ... Supply included 103 Dairy cows & heifers. STEERS: couple Select 60.50 & 63.25, few Standard 46.00-53.50. COWS: Breaking Utility and Commercial 43.00-47.00, one 47.85, Cutter and Boning Utility 42.25-45.60, Canner and Low Cutter 38.75-42.00. Few shells down to 35.00. BULLS: few Yield Grade No. 1 1200/1775 lbs. 46.75-52.00, one No. 2 1200 lbs. 45.00.

CALVES 85... VEALERS: few Standard and Good 75/95 lbs. 42.00-48.00, few Utility 60/80 lbs. 30.00-40.00. FARM CALVES: No. 1 Holstein bulls 85/125 lbs.

75.00-122.50, No. 2 80/115 lbs. 45.00-80.00, one No. 1 Holstein heifers 95 lbs. 130.00

HOGS 72 BARROWS AND GILTS: US 1-2 220/255 lbs. 38.00-41.25, one lot US 1-3 288 lbs. 41.00. SOWS: few US 1-3 250/440 lbs. 30.50-38.00. BOARS: one 12.50.

FEEDER PIGS 108... US 1-3 20/35 lbs. 10.50-16.50, 55/75 lbs. 23.50-26.00. --- per head.

SHEEP 6. Slaughter sheep: few 26.00-27.50.

GOATS 8. Few Large 44.00-78.00, few Large Kids 29.00-44.00. --- per head.

HOLSTEIN DAIRY COWS... \$825.00-\$1225.00, couple \$1350.00. --- per head.

## Pennsylvania

### Livestock Auction

Waynesburg, Pa.

Thursday, January 26, 1995  
Report Supplied by Auction

CATTLE SL COWS UTILITY & COMMERCIAL 37.00 TO 47.25, CUTTER & BONING UTILITY 36.00 TO 43.50, CANNER & LOW CUTTER 30.00 TO 35.00; SHELLS 30.00 & DOWN BULLS. YIELD GRADE 1 1500#-2000# 43.50 TO 57.00 YIELD GRADE 2 1000#-1400# 42.00 TO 53.00

FEEDER STEERS M & L 1 300-500# 50.00 TO 86.00, 250-280# 65.00 TO 90.00, M 600-900# 50.00 TO 77.00 HEIFERS M 1 & L 1 300-500# 50.00 TO 80.00, L 1 400-650# 48.00 TO 75.00, BULLS M & L 1 300-620# 45.00 TO 78.00

CALVES VEAL PRIME 90.00 TO 93.00, CHOICE 80.00 TO 83.00, GOOD 50.00 TO 77.00  
FARM CALVES #1 HOLSTEIN BULLS 90-120# FEW 75.00 TO 110.00, #2 HOLSTEIN BULLS 80-100# FEW 55.00 TO 75.00, BEEF X BULL & HFRS /HD 50.00 TO 120.00

HOGS BARROWS & GILTS #1-2 210-255# 35.00 TO 39.50, #2-3 255-280# 30.00 TO 36.00, SOWS #1-3 300-500# 20.00 TO 35.00

FEEDER PIGS 1-3 25-35# 10.00 TO 25.00/HD

LAMBS HIGH CHOICE 55-75# 70.00 TO 99.00, CHOICE 90-105# 60.00 TO 85.00, FEEDER LAMBS GOOD 50.00 TO 86.00, SHEEP 25.00 TO 38.00

GOATS LARGE 60.00 TO 100.00/HD, MEDIUM 30.00 TO 60.00/HD, SMALL 10.00 TO 30.00/HD  
HORSES 40.00 TO 67.50, PONIES 20.00 TO 57.00

**A LESSON WELL LEARNED... LANCASTER FARMING'S CLASSIFIED ADS GET RESULTS!**

WPM of NY is currently seeking rabbit growers in the PA, Del., and New England States, for weekly supply of rabbits.

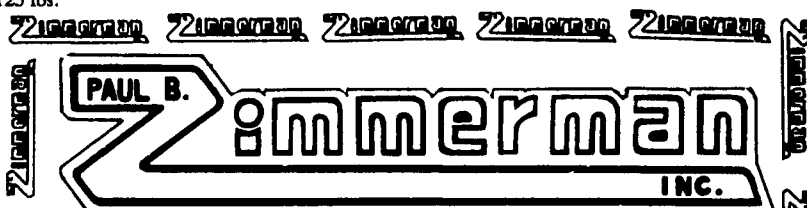
Please call

**Jake Helfrich**

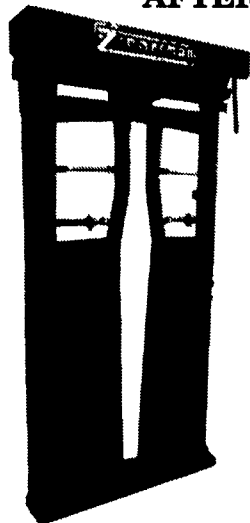
at

**(718) 272-6712**

between 6:00 AM and 12:00 PM for additional information



## AUTOMATIC HEADGATE FINISHED WITH BAKED ON TOP GRADE POLYESTER TGIC POWDER COATING AFTER FABRICATION.



### FEATURING:

- Full roof cover for outdoor protection
- Heavy duty latch for positive locking
- Double linkage for extra stability
- Control handle operated from either side
- Fast, easy adjustments to match animal size and neck size from 5" to 7"
- Handle to manually operate for slow or horned cattle

## PAUL B. ZIMMERMAN, INC.

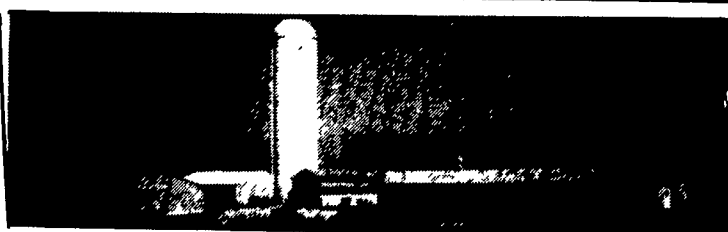
Call or Write For  
Additional Information  
And Your Nearest Dealer

Hours  
Mon. Thru Fri.  
7 to 5  
Sat. 7 to 11

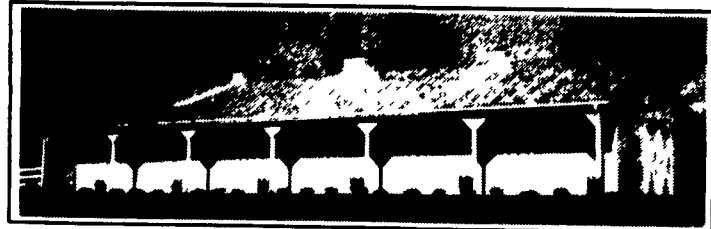
295 Woodcorner Rd.  
Lititz, PA 17543  
1 Mile West of Ephrata  
717-738-7365

## AGRI-INC.

Custom Built Farm Buildings  
Designed To Your Needs



### HEIFER BARN & TIE-STALL BARN



### HORSE STALL BARN

Let Our Experience Work For You

- Dairy Complexes And Replacement Stock Facilities
- Horse Stall Barns And Riding Arenas
- Workshop And Machinery Storage Buildings
- Timber Column Buildings For Light Commercial



**AGRI-INC.** The Construction Professionals

151 E. Farmersville Rd., Ephrata, PA 17522

• (717) 354-4271

Serving The Agricultural Industry For Over 25 Years



## VEGETABLE GROWING MACHINERY



MODEL 1400 WATER  
WHEEL PLANTER



RAISED BED MULCH LAYER  
MODEL 2500

SPECIALIZING IN: Vegetable machinery, plastic mulch, drip & overhead irrigation, layflat, pumps, tomato stakes, harvesting baskets, etc.

**RAIN-FLO IRRIGATION**  
884 Center Church Rd., East Earl, PA 17519  
(717) 445-6976



CHALLENGER 1800  
MULCH LIFTER



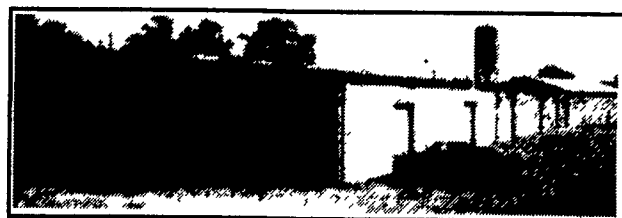
FLAT BED MULCH LAYER  
MODEL 560



EQUIPMENT MFG. BY  
**RAIN-FLO IRR.**

## ATTENTION TOBACCO FARMERS

We Couldn't Do It Without You!



The farmers would have more money in pocket if they make all buyers buy at auctions. The buyer would like it better and do the job cheaper. With county buying and auction, one or the other will lose out. "Which one should go?"

We would like to ask farmers who signed contracts for tobacco, why can't we raise the price? "How can we raise the price when tobacco companies tell us 1/3 of tobacco is sold on contract?" This tells us that 1/3 of farmers are satisfied at \$1.20 per pound.

**SALES: January 30<sup>th</sup>, February 1<sup>st</sup>, 3<sup>rd</sup> • 10 am**  
**Receiving: 1/28: 7-12; 1/30: 7-Sale; 1/31: 7-3; 2/1: 7-Sale**  
**WE NEED TOBACCO TO WORK FOR YOU**

**TRUCKING AVAILABLE-CALL MITCH**

**KENTUCKY-STYLE BALE BOX with air cylinder**  
**Special \$650<sup>00</sup>**

*Pick-up Today Pay with next years tobacco crop*

### PARADISE, PA 1/25/95 SALE REPORT

242,589 Lbs. Sold	Lancaster Leaf.....25%
Low Grade \$.40-\$1.10	Ideal.....28%
Good \$1.20-\$1.22	Golden.....12%
Few \$1.23, \$1.25	Oldam.....15%
Market Steady To Stronger	Southboat.....12%
	Victor Winstead.....5%

**Did you know your tobacco looks better at Paradise Sales Barn than it does in your own barn?**

**We Work Hard For The Farmer**

**PARADISE TOBACCO SALES**  
**717-687-0990**

Mitch White-Sale Mgr. • Mitch Ashby-Auct.

