

OVER 60 YEARS IN BUSINESS!
WOLF MOTOR CO.

ROUTES 72 & 283, LANCASTER, PA 17601



**CENTRAL PA'S
FORD TRUCK DEALER**

Sales Reps.
Charlie Burke

Gary Brennehan
Dennis Asel, Mgr.

717-299-4331

Toll Free 800-637-6612



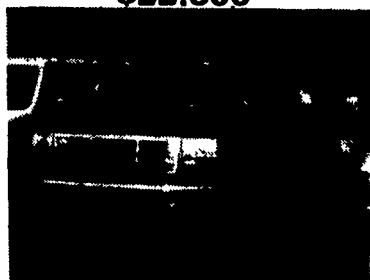
**LARGE SELECTION
CARGO & PASSENGER
VANS**



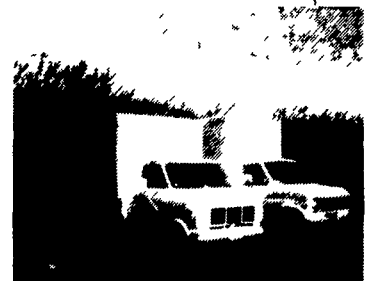
1994 FORD F350 Super Cab
Dually 7.3 L Diesel, 5 Speed, XLT
Captain Chairs
\$22,600



1988 FORD F250 4X4
3.02 V-8, 5 speed Manual
\$7,200



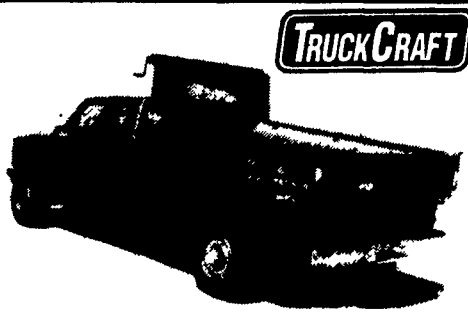
**1993 FORD F450 SUPER
DUTY** 15,000 GVW, 7.3L Diesel,
Auto, XLT, 185" Wheel Base
\$19,500



1985 GMC 12' HI CUBE VAN
V-8, AUTO
\$4,600



**(2) 1995 FORD F-
SUPER DUTY**
7.3 Power Stroke Diesel, Auto,
10' Dump Body



TRUCK CRAFT

PICKUP INSERT DUMPER
For FREE brochure, call toll free 24 hr.
1-800-755-3867

MANURE TRUCK

'73 Mack tandem
axle, 237 engine,
6-speed lo-hole
trans., 55,000 lb.
rears, 4800 gal.
vacuum tank, good
rubber & brakes,
1 good spare, 6-
spd. trans., 1 good
spare fly wheel
PTO

717/463-2318

International Truck

w/466 diesel engine,
model S-1954, 206"
wheel base, nice truck;
International R-185
w/16' flatbed w/double
sideboards, racks
and bows w/tarp;
Set of Sanders,
electric-controlled, ideal
for school bus or truck.
814/735-4727

SS SAVE SS SAVE SS SAVE SS SAVE SS SAVE SS SAVE

**1995 DODGE RAM
T-300 PICKUP**



**18
AVAILABLE**

**1995 DODGE DAKOTA
CLUB CABS
2WD & 4WD**



**32
AVAILABLE**

**We Are One Of The Largest Volume Dodge Truck
Dealers East Of The Mississippi**

Volume Stocking Permits Volume Discounts!



ROUTE 422, ROBESONIA, PA. (215) 693-5855

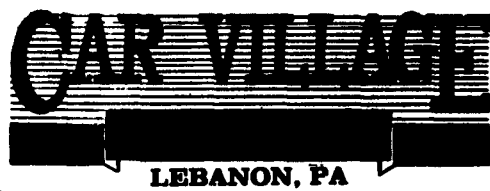
**"National
Award-Winning
Dealer"**

"Ask A Friend About Us"
1-800-800-2623

Nicest
Pre Owned
Trucks
Anywhere!

**RTE. 422 WEST
LEBANON, PA**

(Across From Lebanon
Valley Mall)



**PHONE
717-274-2000**

Business Hours
Mon-Thurs 9-9
Fri & Sat 9-4

SPECIALIZING IN HEAVY DUTY TRUCKS



Snow Flow
94 GMC 2500 4x4
6.5 Turbo Diesel, 5 Spd, Western
Power Angle Plow



4x4 4 DR Dually 88 Chevy Crew Cab
The Nicest Anywhere Come See & Drive,
20,800 Original Miles, 454, AT, A/C,
Loaded, The Finest



Turbo Diesel 4x4
94 Chevy 2500 Silverado
Only 1000 Miles, Like New, New Truck
Warranty, 6.5 Turbo, AT, AC & More, Look At
This One



Diesel Cargo Van
93 Ford F-350
Extend Length, Diesel, AT, A/C, Low Miles,
Ready to Work



Flatbed Dump
87 Ford F-350
Diesel, Auto, Flatbed Dump Dual
Tanks, Hitch, Ready To Go



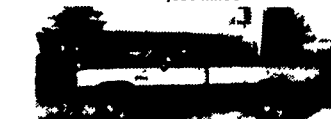
Diesel 1 Ton Flatbed
83 Ford F-350 XL
Only 38,000 miles, 7.3 Diesel, AT, O/D,
A/C, 11,000 GVW, Dual Tanks,
Tow Pkg., Class 3 Hitch



4x4 Crew Cab Dually
92 Chevy 3500
Totally Awesome - Perfect 454 fl,
Auto, AC, Silverado, 2 Tone Paint,
Captain Chairs



Super Duty Chassis
94 Ford F-450
137 W.B. 480 i.l., 5 Sp. O/D, Air
Conditioning, 18,000 GVW, Only
18,000 Miles



4x4 Cummins Turbo
82 Dodge 250 LE
Diesel Power, Heavy Duty
3/4 Ton, A/C, Tow Pkg, Real
Clean, Only 29,000 Miles



Diesel 3/4 Ton 4x4 93 Ford F-250 XL
Heavy Duty, Only 21,000 miles, 7.3 Diesel,
5-Spd., A/C, Dual Tanks, Real Nice,
2-Tone, New Insp. & Tires



Work Truck - Farm Truck
Diesel Super Cab 4x4
88 Ford F-250, Diesel, 4 Spd, Not Pretty,
But Runs Fine



L-Pak Dump 88 Ford F-350
Diesel Power 4 Sp., Very
Convenient, Utility Boxes, Behind
Cab, Clean Truck, Runs Well



4x4 Crew Cab
88 Ford F350
Ready For the Family or The Work
Crew, V8, Auto, A/C, Excellent Body
& Paint, Lock Out Hubs



Stake Body Dump
90 Ford F-350
12 Ft. Body, 50,100 Miles, Works
Well, Runs Great, 480 i.l., 5 Spd



Head For The Hills
82 Jeep CJ-7
Laredo Pkg, Big 6 Cyl, 5 Spd, 33" Tires,
Custom Wheels, Excellent Body



Turbo Diesel 4 Dr 4x4
94 Ford F-350 XLT
Awesome Truck, Only 18,000 Miles,
Like New, 7.3 Turbo Diesel, AT, A/C,
Limited Slip Axle, Class 3 Hitch,
Hard to Find These.



4x4 Club Cab 93 Dodge 250 LE
Cummins Turbo Diesel, HD, 5 Sp.,
A/C, Tilt, Cruise, Tow Pkg.,
Remainder Factory Warranty



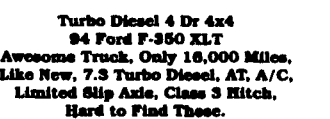
Diesel Chassis
91 Ford F Super Duty
Only 58,000 Miles, 7.3 Diesel, 5 Spd, A/C, Long
181 W.B., Dual Tanks, 18,000 GVW



Utility With Liftgate
88 Ford Super Duty
11 Ft. Body with Electric Lift Gate,
Only 84,000 Miles, 7.3 Diesel, 5 Spd



1 Ton 4x4 93 Ford F-350 XLT
Only 14,000 Miles, Strong 480 i.l.,
Auto, A/C, Dual Tanks, Tow Pkg.,
Very Very Nice



4x4 Super Cab Dually
91 Ford F-250 XLT
Rare Find, Diesel, 5 Spd, A/C, Captain
Chairs, Custom Wheels, Good Looker



Roll Back
80 Ford F-350
V8, 4 Spd., 17 Ft. Steel Bed