

NEW 8x18 foot all steel beds with extra ribbing under floor and hinge down sides
\$600 each
301-293-2577

Knapheide 20' steel lumber body Heavy duty hoist, (no pump), 4 1/2" head board A-1 shape, \$3,000 OBO M-F, 7-4, (800)872-0160, (301)829-2900

Longwood Wood Furnace, 150,000 BTU's, hot air and gas back-up, \$650. Citation high-pressure washer, 1,000 PSI's, hot water, \$500. 814-848-9753.

Mack 1970 R600 Tandem Tractor, Bad Engine, Nice Cab \$1900, Chevrolet 1981 1/2 Pickup \$450; Bobcat 1978 42' Chain Floor Trailer \$10,200 (215)598-7687.



1994 FORD E150 XLT, 8 Pass, EFI 302, ATO, Dual A/C & Heat, PW, PL, Tilt, Cruise, 22,000 miles



(2) 1993 FORD E350 Super Custom, 12 or 15 pass, 7.3 Diesel, ATO, Dual A/C & Heat, Tilt, Cruise

ALSO AVAILABLE:

- 1992 Chev G30, Sport Van, 12 Pass 50,000 miles-
- 1992 Ford E150 XLT, 8 Pass 77,000 miles
- 1991 Ford E250 XL, 12 Pass 84,000 miles
- 1992 GMC STX, 8 Pass 31,000 miles
- 1992 Chev Beauville, 8 Pass 42,000 miles
- 1994 Chev Astro, 8 Pass 32,000 miles



1989 ISUZU NPR, 14' Box, 11,000 GVW, Auto, AC, P.S., PB

FOUR WAY AUTO SALES
 770 West Main St., New Holland, PA 17557
717-354-3199

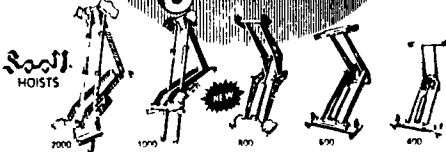
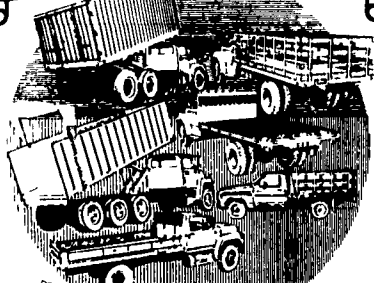
- 1993 Dodge Intrepid V-6, AT, Loaded, Dk. Green, 52,400 Mi..... \$12,900
- 1992 Ford F-150 Cust. P.U., 300, 6 Cyl., AT, AC, AM-FM, Dual Tanks, Blue, 112,900 Mi..... \$8,900
- 1991 Ford Aerostar XLT, AWD Ext., 7 Pass., 4.0 V-6, AT, Loaded, Gray/Black, 70,300 Mi..... \$9,800
- 1991 Ford Taurus SHO V-6, 5 Spd., Loaded, Jbl. Pwr. Sunroof, Airbag, White, 43,100 Mi..... \$10,900
- 1990 Chevy Lumina APV, 7 Pass., V-6, AT, Loaded, Blue/Silver, 59,200 Mi..... \$8,800
- 1990 Chevy 1500 W/T 4x4 Cheyenne, 4.3 V-6, 5 Spd., White, 56,900 Mi..... \$8,900
- 1989 Chevy 1500 Silverado P.U., V-8, 5 Spd., AC, CR, Tilt, AM-FM Cass., Silver, 94,500 Mi... \$5,900
- 1988 Dodge Ramcharger 150 LE, 4x4, 360, V-8, AT, Loaded, Brown/Gold, 73,500 Mi..... \$8,900
- 1988 Chevy 1500 Silverado P.U., 4x4, 350 V-8, 5 Spd., Loaded, Blue, 71,000 Mi..... \$8,900
- 1986 Ford Ranger STX Ext. Cab, 4x4, V-6, AT, AM-FM Cass., Red/Gray, 107,800 Mi..... \$6,600
- 1986 Chevy 10 Custom Deluxe, 6.2 Diesel, 4x4, AT, AM-FM Cass., Red, 64,200 Mi..... \$6,600

Brubaker's Auto Sales
 Myerstown, PA
717-866-5237



LINE OF TRUCK BODIES/HOISTS & ACCESSORIES TO COMPLIMENT OUR PRODUCT LINE

TAFCO EQUIPMENT COMPANY
 Scott BODIES & HOISTS
 YOUR FULL LINE TRUCK EQUIPMENT MANUFACTURER



LEVEL LIFT HYDRAULIC HOISTS

5 models 2000 1000 800 600 & 400 One Level Lift does the job of two hoists only better

MEDIUM AND HEAVY DUTY STAKE PLATFORMS

Steel aluminum and poly board racks are available

SCOTT-LITE ALUMINUM PLATFORMS

Available with aluminum racks bulkheads skirts 7 x 66 thru 12 x 94 sizes

STAKELESS GRAIN BODIES (The Originals)

14 24 ft lengths with 50 or 62 sides

CONTRACTOR BODY

10 gauge steel constructed with fold down sides

ENSILAGE BODY

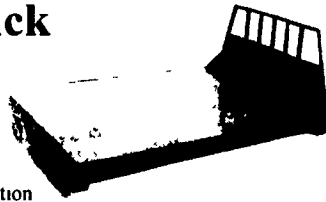
12 gauge construction with hydraulic end gate

BINKLEY & HURST BROS. INC.

133 Rothsville Station Rd. • Lititz, PA 17543
 717-626-4705

Replacement Truck Bodies

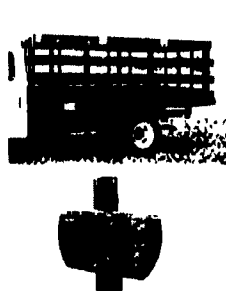
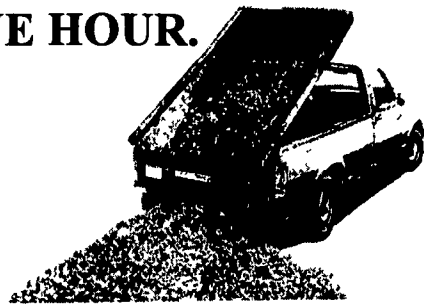
Standard Features Include Headboard (Square or Tapered), Stake Pockets, Rubrail, Diamond Plate or 2" Wood Floor, Heavy Duty Construction



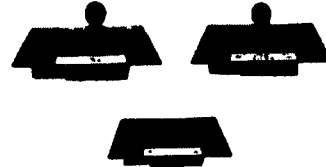
Length	Width	Frame Width	Price
7 FT	66 or 78"	34, 38 or 40"	\$ 595
8 1/2 FT	80 or 90"	34 or 38"	\$ 595
10 FT	90"	34 or 38"	\$ 725
11 FT	90"	34 or 38"	\$ 950
12 FT	90"	34 or 38"	\$ 1100
14 FT	90"	34 or 38"	\$ 1300
16 FT	90"	34 or 38"	\$ 1500
18 FT	90"	34 or 38"	\$ 1700
20 FT	90"	34 or 38"	\$ 2000

EZ Dumper
TURN YOUR PICK UP INTO A DUMP TRUCK IN LESS THAN ONE HOUR.

SALE \$1895



Plastic wood slats for body racks



Gooseneck ball hitches & subframes



Trailer hitches & accessories

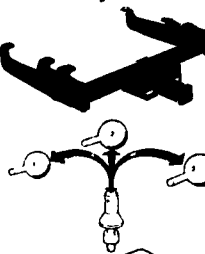


Drop hinge scissor hoists

Ringo Hill Farms Equipment Co., Inc.
 1624 Rt 212 Quakertown, PA 18951
 (610) 346-7340 Call for a FREE Catalog

MOTORS
 New & Rebuilt
 350, 366, 427, 454
 6.2 Diesels Rebuilt & Used
 Will Install Roll Back Service (at cost)
 717-762-6415

TRAILER HITCHES
 Quality & Price



★ Free Catalog
 ★ MC/Visa/Disc
 ★ UPS Shipping
Weaver Distributing
 1-800-Weaver-D
 1-800-932-8373
 Fax 717-865-2667

EBY USED EQUIPMENT

BODIES
 (2) 12' Eby Cattle Bodies
 15' Eby Cattle Body
 20' Eby Cattle Body

HAY BODY
 1989 Eby 24'x8' Alum. Flatbed Body w/ Cab Rack

TRUCK
 1982 20 Ft. Hostetter Wood Cattle Body on '82 GMC Truck

GOOSENECKS
 * New 1995 Eby 24'x7' Wrangler
 1990 Wil-Ro 20'x6'x6" 1988 Eby 26'x7' Ruff Neck
 1982 Eby, 20'x8' with Rear Ramp

M.H. Eby, Inc.
 1194 Main Street (Route 23) Blue Ball, PA 17506 (717) 354-4971 (800) 292-4752 FAX (717) 355-2114
 4435 State Route 29 West Jefferson, OH 43162 (614) 879-6901 (800) 752-0507 FAX (614) 879-6904

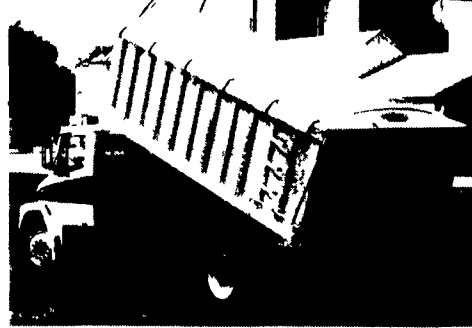
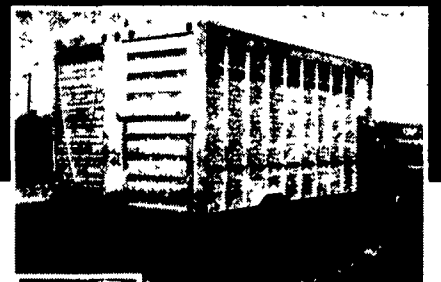
Agriculture Moves on EBY Bodies

M.H. Eby custom-builds aluminum truck bodies for the agri-transportation market. Nobody offers more sizes and options in:

- **LIVESTOCK BODIES** - Lengths to 32', choice of heights and widths.
- **GRAIN BODIES** - Lengths to 24'; landscape and general purpose dumps to 12'.
- **FLATBED BODIES** - Lengths to 32', choice of 5 widths.

For greater payload capacity, Eby's aluminum design is equal in strength to steel and up to 40% lighter. Our corrosion-resistant components never need painting. That means minimum maintenance, improved appearance and higher resale value.

Eby products have superior standard features. And we offer custom options for virtually any application. Agriculture is your business- building bodies to haul it is ours.



Let EBY custom build one for you.



M.H. EBY, INC.

1194 Main Street (Rt 23) • Blue Ball, PA 17506 • 800/292-4752 • 717/354-4971 • FAX 717/355-2114
 4435 State Route 29 • West Jefferson, OH 43162 • 800/752-0507 • 614/879-6901 • FAX 614/879-6904