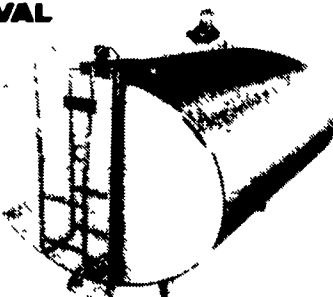


6 DAIRY EQUIPMENT

OUR SPECIALITY IS SALES AND SERVICE OF NEW & USED BULK MILK TANKS

DE LAVAL

Featuring
The
DeLaval
New Century
600-5,000 Gal.



We Will Service Any Make Bulk Tank
H.W. MARTIN REFRIGERATION SERVICE
501 E. Woods Dr. Lititz, PA 17543
Phone: (717) 626-6355

6 DAIRY EQUIPMENT

NEW SPUTNIK

w/12" Lid opening -Large wheels
-Heavy duty construction -330 pound capacity
Has passed U.S. Board of Health and PA. Dept. of Agriculture Inspection



The Conde Sputnik, including it's heavy duty undercarriage, is constructed entirely of quality 300 stainless steel. The Sputnik carries a one year guarantee against factory defects

Daniel Beiler 78 South Maple Avenue, Leola, PA 17540

Alfalfa & Sons
Serving Southeast PA and Northeast MD with quality milking equipment, 24-hour service and dairy supply routes.

NEW & USED SPUTNIKS
(and Sputnik parts!)
Milkers

NOBLE ROAD MILKING EQUIP.

S.R. STOLTZFUS • 1523 KIRKWOOD PIKE • KIRKWOOD, PA 17536 • 717/529-1226

Dairy Equipment & Supplies • Sales, Service, & Repair
Westfalia • DeLaval • Top Line • Bou-Matic
Animal Health Supplies • Soaps & Detergents

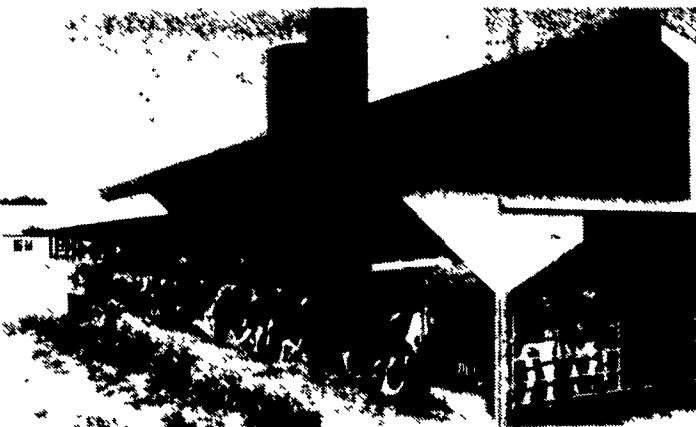
SPECIAL PRICE: Sputnik socks-\$49.75/case, (6 boxes per case), new vacuum pumps, carrying pails, stainless steel tubs, and inflations.



WE INSTALL VACUUM SYSTEMS!

Smucker Construction
135 Churchtown Road
Narvon, Pa. 17555

Call us today for all your building needs
717-768-8606



40'x200' Dairy Barn
128' Helfer and dry cow barn with pit and slatted floor



FULL LINE DEALER

For...



Germania

CALL US FOR YOUR PARLOR PLANNING NEEDS!

SHARTLESVILLE FARM SERVICE

R.D. 1, Box 1392
Hamburg, PA 19526
Phone: (610) 488-1025



A 1st Class Team Together For 25 Years!



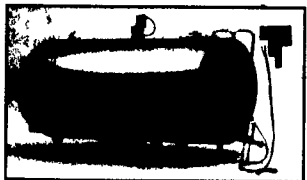
RUFUS BRUBAKER REFRIGERATION

And...

MUELLER
DAIRY FARM EQUIPMENT

Offer
Scroll-Compressor Technology

New in 1994



You may pay less for some dairy farm equipment... but it can cost you more!

Equipment cost is not the only cost of cooling milk

In the long run, total operating costs of a Mueller® milk-cooling system are generally substantially less than those of "bargain-brand" milk-cooling equipment.

Example	Mueller	Competition
Cost of equipment	\$31,000	\$28,000
Cost of electricity @ .08 kw for 12,000 lbs milk/day for 10 yrs.	\$17,550	\$22,850
Total operating cost for ten years	\$48,550	\$50,850
Savings	\$2,300	

Contact your Mueller distributor for further comparisons.



Southern Service Center
76 Pumping Station Rd.
Quarryville, Pa.
717-786-1617
Vic Leininger

MAIN OFFICE

1048 North Penryn Rd.
Manheim, Pa. 17545

717-665-3525
Ken or Ed Brubaker

Northern Service Center
541 Frystown Rd.
Myerstown, Pa.
717-933-4711
Ken Kopp

★ Call Today For All Your New or Used Milk Tank And Refrigeration Equipment Needs!

Empire QUALITY CURTAINS

- PARLOR/HOLDING DIVIDER
- COMMODITY BUILDING DOORS



- ★ THERMAL 5 LAYER FABRIC OR POLYETHYLENE UNINSULATED FABRIC
- ★ HEAVY 2" TUBE SUSPENSION
- ★ GEAR REDUCTION DRIVE WITH REMOTE 3 WAY SWITCH OR MANUAL POCKET CHAIN DRIVE
- ★ COVER OPENINGS UP TO 16' HEIGHT

EMPIRE AGRI-SYSTEMS, INC.

315-253-3256 • Grant Ave., Auburn, N.Y. • Fax 315-252-2108
Dealer Inquiries Welcome!