

National Holstein Convention Offers Promotion Opportunity

PITTSBURGH — Remember the three-year-old that took champion honors for you at your local show last summer? Or the heifer that did so well for your youngster as a 4-H project?

Does anyone know about your herd's latest classification achievements and your new homebred Excellents and high-scored Very

Goods? And have you publicly thanked the buyers of your herd genetics lately?

Holstein Association delegates, cattle breeders and enthusiasts from all over the United States, as well as International guests, will converge on Pittsburgh, June 25-28 for the 1995 National Holstein annual meeting and conven-

tion.

A major part of every annual National Holstein convention is the "guidebook," in the form of the convention souvenir booklet. Included in this year's convention booklet will be schedules of convention events, information on what to see and do in the area, and highlights of the Holstein history of

Pennsylvania.

Since Pennsylvania hosts the national convention only once every twenty or so years, the opportunity for Holstein breeders to promote their cattle and farms in this booklet is truly a unique one. Convention booklets are "keepers," saved from year to year by many of the several thousand who attend and use them as reference guides for marketing information and visiting farms.

Full-page promotional space is available in both black and white and color, as well as half and quarter-pages in black and white. Included is a listing of the farm or business on a separate Pennsylvania locator map, an added-bonus promotional tool useful in marketing and merchandising.

To reserve promotional space in the 1995 National Holstein Convention souvenir booklet, contact any of the Booklet Publication Committee members listed below:

Joyce Bupp, York County, 717-428-1865

Renee Bates, Mercer County, 412-376-2430

Lolly Leshner, Berks County, 610-488-9160

Rhelda Royer, Lancaster County, 717-569-2304

Patricia Carr, Somerset County, 814-445-8237

Kathy Walton, Cumberland County, 717-243-8750

Cindy Weimer, Clarion County, 814-498-2047

Judy Black, Blair County, 918-684-3907

John & Leslie Rhoades, Wyoming County, 717-836-5495

Jake and Sally Tanis, Centre County, 814-364-2113

Carolyn Moyer, Tioga County, 717-324-2482

John & Judy Grice, Washington County, 412-225-7806

Martha Gehring, Montgomery County, 215-845-2538

Vincent Wagner, Lebanon County, 717-949-2046

Nina Burdette, Franklin County, 717-328-3222

Jane Benner, Perry County, 717-939-3838

Pennsylvania Holstein Association, State College, 814-234-0364, or FAX 814-234-1698

Don't miss this opportunity to showcase the accomplishments of your herd, your farm and your family.

Dairy MAP To Begin In Wayne County

HONESDALE (Wayne Co.) — Dairy MAP, developed by a multi-disciplinary team in Penn State's College of Agricultural Sciences, began in 1992. The program is designed to help producers increase their competitive advantage by providing up-to-date business management information tailored specifically for the dairy industry. The program's core workshop, "Managing for Success" (MFS), applies general business management techniques to the dairy business.

Participants in this program will be taught skills, not given easy answers. Participants are expected to solve problems, make plans and define farm goals. All of these can be applied to their actual farm operation right away.

Each Dairy-MAP workshop features six to eight hours of learning, split over two sessions held one week apart. Between sessions, participants do homework to help them begin applying business concepts on their farm.

The Dairy MAP program, in Wayne County will be held on Thursday, January 26 from about 10 a.m. to 3 p.m. each day. The meeting site is the Wayne County Cooperative Extension Office, Courthouse, Honesdale.

Interested potential participants in this Wayne County Dairy-MAP program are encouraged to contact area agribusinesses for financial support of the \$100 per farm fee. Some of the area agribusinesses

that have responded with financial support are Northeast Farm Credit, ACA, Atlantic Dairy Cooperative, Dairylea Cooperative and Eastern Milk Producers' Cooperative, Inc. Other agribusinesses such as a feed mill, area machinery dealers, A.I. Cooperative and others doing business with the dairy farm might be approached for support of this program.

For more information about the Dairy-MAP Program offered in Wayne County, contact the Wayne County Cooperative Extension by dialing (717) 253-5970 ext. 239 or by visiting the office located in the basement of the Wayne County Courthouse in Honesdale.

DON'T BE SLOW 
Call Now To Place Your **CLASSIFIED AD**
Ph: 717-394-3047 or 717-626-1164

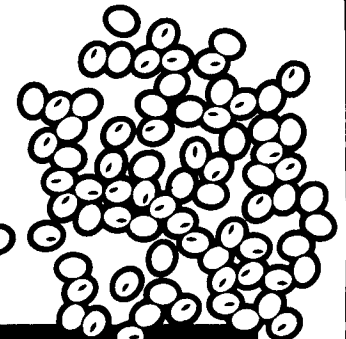
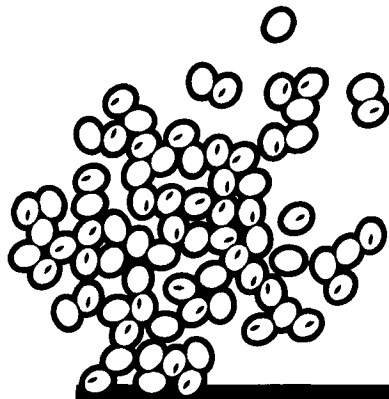
LEARN TAXIDERMY
RESIDENT SCHOOL
12 Week Courses
35 Years Experience
Licensed by Department of Education
BILL ALLEN'S POCONO INSTITUTE OF TAXIDERMY
R.D. #2, Box 2038
White Haven, PA 18661
1(800) 639-9166

HAY, STRAW, PEANUT HULLS
At farm or delivered in any quantity as you require.
Ebenshade Turkey Farm
(America's Oldest Since 1858)
Paradise, Pa.
(717) 687-7631

SMOKER, LANDIS & COMPANY
Certified Public Accountants
• Individual Partnership & Corporate Taxes
• Accounting
• Tax Planning
• Auditing
• Management Consulting
• Personal Financial Services
• Computer & Consulting Services
• Payroll Preparation
• Retirement Plans
49 East Main Street, Leola
(717) 656-7544 or 392-1333
37 Market Square, Manheim
(717) 665-5979 or 393-1929

Make your investment count:

Boost soybean production by as much as 20%



1993 PA Soybean Variety Trials						
	Lancaster County			Centre County		
Hoffman 7353	53.4 Bu/A			66.2 Bu/A		
Mean	46.3 Bu/A			60.0 Bu/A		
Average yield advantage: 6.6 Bu/A						
1993 MD Soybean Variety Tests						
	Clarksville	Queenstown			Quantico	
		Full Season	Double Conv.	Crop Drill	Full Season	Double Crop
Hoffman 7403	54.8	45.6	39.4	40.5	40.7	48.2
Mean	45.7	44.7	39.8	38.2	39.1	43.0
Average yield advantage: 3.1 Bu/A						
1993 Delaware Variety Performance Summary						
	Selbyville, DE					
Hoffman 7484	80.1 Bu/A					
Average	66.7 Bu/A					
Yield advantage: 13.4 Bu/A						

Who couldn't use an extra 6%, 10% or 20% more yield? Now you can achieve yield gains of similar proportions, with our top-performing soybeans

Medium Group 3 Maturity. Hoffman 7353 produced a 10% yield advantage over the mean in trials in Lancaster and Centre counties in Pennsylvania. It emerges fast, develops a good canopy and demonstrates excellent shattering resistance, as well as resistance to Phytophthora Root Rot

Early Group 4 Maturity. Hoffman 7403 gives you excellent emergence, standability, shattering resistance and lodging resistance, in addition to top yields

Medium Group 4 Maturity. Hoffman 7484 was ranked first in 1993 Delaware trials in Selbyville, surpassing the average by 13.4 Bu/A — or 20%. It emerges quickly and has outstanding shattering resistance

No matter what your specific needs, Hoffman has a high-performing soybean variety that will give you greater yields. Contact your Hoffman sales rep today



Hoffman Seeds, Inc., Landisville, PA 17538

Call Toll Free: 1-800-776-7929

Adding Value to your Seed Investment

© 1994 Hoffman Seeds, Inc.