



WENGERS FARM MACHINERY, INC.



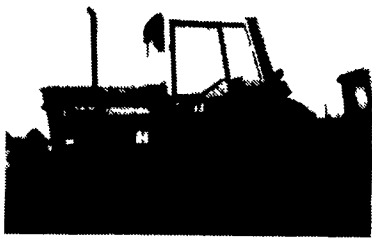
ROUTE 501 - 1 MILE SOUTH OF MYERSTOWN, PA.

Ask For:
Dave Wenger
Or
Alvin Martin

717-866-2135

Mailing Address: 814 South College Avenue
Myerstown, PA 17067

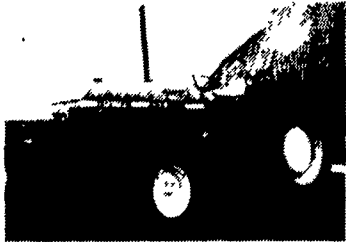
HOURS
MON.-FRI 7.30-5
SAT. 7.30-NOON



1980 International 1086, 18.4x38 Radials, Front & Rear Weights, 2 Remotes, Axle Duals, 3975 Hours, SHARP.



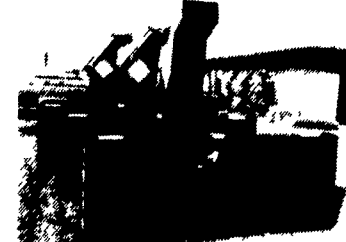
1990 CASE IH 5120 Maxum, 18.4x34, 2 Remotes, Optional Creeper Gear Transmission, only 225 Hours, like new, 80 HP



John Deere 2150, very nice 50 HP diesel w/front weights, remote hydraulics, independent PTO.



John Deere 1710A 11 Tooth Mulch Tiller (Disc Chisel) w/Walking Tandem. Also have Glencoe and Hesston.



Snowblowers; 6', 7' and 8' on stock. NO SNOW SALE, STOP IN TO MAKE YOUR BEST DEAL. BRING YOUR TRUCK.



Woods/Dual 195 Qt Loader w/6' Bucket and Wobble Stick Control Valve to Fit IH 574, etc.



New Holland 354 Grinder Mixer in very good condition w/unloading auger extension



1982 International 274 Cult., Side Dresser, 531 Hrs.



John Deere 265 Loader Excellent Condition To Fit 4430 Etc.



Brillion 14' Cultipacker w/End Transport, Others Available.



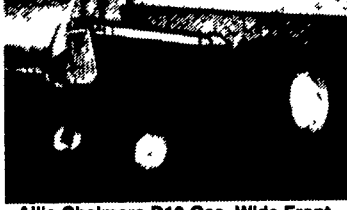
Case IH 475 18' Wing Disc 11' Base 3 1/2' Wings, 21" Blades Excellent



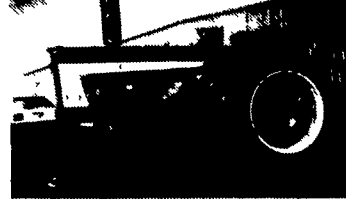
Ford 2810 Diesel 4WD w/Ford 776 F Loader, low hours, very good tractor.



New Idea 456 Bale King Round Baler, in Excellent Condition, Makes A 5' Bale.



Allis Chalmers D19 Gas, Wide Front, Very Good Yet Inexpensive 70 HP Tractor.



International 666 gas with wide front, 3 pt., 2 remotes, good condition, 69 HP

FARM TRACTORS

Ford 8730 MFWD, Low Hours, Sharp 140 HP
 Ford 2910 Diesel w/Loader 36 HP
 Ford 2810 MFWD w/772 Loader, Sharp
 Ford 6600 Dual Power, 1R, 66 HP
 Ford 2000 LCG, Gas, P.S., Turf Tires
 Ford NAA "Golden Jubilee" Nice Original
 IH 1086 Cab, Air, Excellent
 IH 1066, Cab, 2R, Radials, Nice
 IH 666 Diesel, WF, 3 Pt., Nice, 66 HP
 IH 666 Gas, WF, 3 Pt., 2R, Sharp
 IH 666 Gas, WF, 3 Pt., Nice, 69 HP
 IH 274 Diesel Offset w/Cult., Sharp
 IH 656 Diesel, High Utility, 3 Pt. Nice
 IH 424 Gas, 37 HP
 JD 4430 Cab, Powershift
 JD 4030, Canopy, Syncro, Nice
 JD 2510 Gas, Tricycle, Sharp
 JD 4320, Cab, 2R, 38", 116 HP
 JD 3020, Cab, Syncro, 1R, Wts., 70 HP
 JD 4020, Cab 2R Syncro
 JD 2630 Hi-Lo, 2R, Ind., Sharp
 JD 2150 Diesel, 1R, 50 HP, Nice
 JD 2150 w/Loader and Backhoe
 JD 330 Std. S/N 330265
 Case 4490, 175 HP, 3 Pt., PTO
 Case 4890, 225 HP, 3 Pt., PTO
 Case 380 w/Loader, 40 HP Diesel, 3 Pt., PTO
 Allis D19 Gas, WF, 70 HP
 Allis WD 45 Gas, WF, Woods 6' Mower
 MF 255 Diesel w/Canopy, 52 HP
 MF 135 Gas, 3 Pt.
 IMT 539 Diesel (same as MF 35)
 Oliver 1655 Gas, WF, Nice
 Farmall Super MTA, Sharp
 Farmall Super H, Nice
 (3) Farmall C, one w/Mower, other w/WF
 Farmall 140 w/Cultivator 24 HP
 Farmall 100 w/f.h. Sharp 24 HP
 Satoh 550 Gas, Compact, 17 HP, Nice
 Kubota 245 Offset w/Cultivator, very nice

MANURE SPREADERS

John Deere 450 Hydra Push w/Pan and Top Beater, Sharp
 New Holland 514 w/Tailgate (Like New)
 New Idea 18 Ground Drive (Sharp)

DUALS

1 Set 18.4x30 Clamp On T-Rail
 2 Sets 16.9x34 Clamp On T-Rail
 2 Sets 18.4x34 9 Bolt Center
 5 Sets 18.4x38 9 Bolt Center
 2 Sets 18.4x38 Clamp On T-Rail
 1 Set 18x38 10 Bolt Rims Only
 Set of 4 - 18x38 Tires, Rims and Hubs for IH 3788 2+2
 1 Set 18.4x38 10 Bolt to Fit IH 5088

CHISEL PLOWS & FIELD CULTIVATORS

Hesston 9T Soil Saver w/Hydr. Dics
 Hiniker 1120 18' Flat Fold Field Cult.-Sharp
 Brillion 10' Pull Chisel
 Glencoe 9' Pull Chisels
 AC 1200 3 Pt. Field Cult., w/Hyd. Wings, 20'
 JD 12' 3 Pt. Danish Field Cult.
 UFT 10' 3 Pt. Chisel Hi-Clear
 Kewanee 7' 3 Pt. Chisel, Hi-Clear
 Brillion 11T 3 Pt. V-Ripper
 Brillion 14' Danish Tine Harrow
 Brillion 14' Transport Spring Tooth Harrow
 Oliver 14' Wing Spring Harrow
 IH 55 11' 3 Pt. Chisel
 JD 12' 3 Pt. Chisel Can Be 10'
 JD 1710A 11 Tooth Mulch Tiller (Soilsaver)
 Glencoe 9T Soilsaver

ROLLER HARROWS AND PACKERS

Bearcat 10' Roller Harrow
 Chatanooga 8' Cultimulcher
 Dunham 10' Roller Harrow
 Kewanee 10' Roller Harrow
 Dunham 12' Cultimulcher
 (3) Brillion 10' Packer w/4" Axle
 Brillion 16' Cultipacker, 4" Axle
 Brillion 14' Packer w/End Transport
 Dunham 14' Packer w/End Transport
 Dunham 11' Packer w/End Transport
 Brillion 12' Packer
 JD 12' Packer

PLOWS

White 588 7x18 On Land 6x Base
 White 549 4x16 Auto Reset
 White 548 6x18 Auto Reset
 Oliver 546 6x16 Auto Reset
 Oliver 548 5x18 Auto Reset
 IH 720 5x18 Auto Reset
 IH 720 7x18 Auto Reset, On land
 IH 710 6x18 On Land, Trip
 IH 720 4x18 Auto Reset
 IH 700 5x16 Auto Reset
 IH 730 4x Vari-Width, Toggle
 IH 710 4x16 Auto Reset
 IH 710 3x16 Auto Reset
 IH 450 3x16 3 Pt. Auto Reset
 IH 314 3x16 Rollover
 (2) IH 2x Fast Hitch
 (2) IH 311 3x Fast Hitch
 White 6342 3x16 Rollover w/Coulters
 JD 2800 7X Auto Reset
 JD 2700 7x On Land Toggle Trip
 JD 4600 5x18 Rollover, 4X Base On Land
 (2) Ford 2x14 3 Pt. Trip Plow
 Ford 2x16 3 Pt. Trip Plow

HAY EQUIPMENT

JD 672 Rake w/Dolly
 NH 256 Rake w/Dolly
 NH 256 Rake
 NH 56 Rake
 Pequea 5x20 Bale Feeder
 Pequea 760 Rake Inverter
 Pequea 710 PTO Tedder
 (2) JD 1219 Haybines (1 Almost New)
 JD 346 Baler w/Ejector
 JD 336 Baler w/Ejector
 NH 451 Sickle For Parts
 NH 450 7' 3 Pt. Sickle Mower
 NH 451 7' 3 Pt. Sickle Mower
 IH 1300 9' 3 Pt. Sickle Mower
 JD 350 7' 3 Pt. Sickle Mower
 (2) Oliver 351 7' 3 Pt. Sickle Mower
 Ford 501 6' 3 Pt. Sickle Mower
 NH 455 7' Pull Type Sickle
 AC 7' Pull Type Sickle
 IH 27V 7' Semi Mount Sickle
 Buffalo Valley 36' Elevator
 (4) Farmco 18x8 Steel Hay Wagons

CORN PLANTERS AND GRAIN DRILLS

Tye No Till 13' Pasture Pleaser
 IH 510 16x7 SD w/Grass & Fert.
 JD Van Brunt 15x7 SD w/Grass & Fert.
 JD Van Brunt 17x7 SD w/Grass & Fert.
 JD 7000 6x30 Plate Planter
 JD 7000 4x36 Max Emerge Planter
 (2) Ford 309 2 Row 3 Pt. planter
 (3) IH 56 2 Row Pull Type Planter
 (2) IH 251 2 Row Pull Type Planter
 Oliver 2 Row 3 Pt. Planter
 Allis Chalmers 2 Row 3 Pt. No Til Planter

ROTARY MOWERS

New Woods 3180 15' Wing Mower
 Woods RM660 6' Estate
 Mott Flail to Fit Cub
 Woods MD 80" 3 pt. Mower
 New Woods 59 For Super A, 140
 New Woods L59 for AC 'B'
 New Woods 214 14' Mower/Shredder
 Brillion 15' Stalk Shredder
 Woods 0121 10' Offset Mower
 Bush Hog 13' Rotary Mower
 King Kutter 5' 3 Pt. Estate Mower
 Bush Hog 315 11' Wing Mower
 Woods 6' Cadet 3 Pt. Rotary
 Woods 7' Cadet 3 Pt. Rotary

MISCELLANEOUS

NH 354 Grinder Mixer
 (2) Gehl 95 Grinder Mixers
 (4) Gravity Bin Wagons
 6' and 8' Fast Hitch Blades
 Bush Hog RTS 62 3 Pt. Rotary Tiller,
 New 52", 63" and 72" 3 Pt. Rototillers
 Westfield 4x11 and 6x16 Uty. Augers
 Shaver Post Driver
 New and Used Post Hole Diggers
 Oliver 2 R Potato Digger
 JD 10' Lime Drill
 Westgo Hydraulic Rock Picker
 Kory 6T and 8T Wagon Gears
 (2) Brillion Packer/Seeders
 Side Dresser Attach. for Cub and Super A
 8' Flexible Chain Harrow
 Several Used Tractor Cabs
 WIC 2700 Tandem Axle Tank Spreader w/3 Pt. Injectors
 Woods Rear Blades for up to 150 HP

DISC HARROWS

Krause 14' Wing Fold, Nice
 JD 220 18' Centerfold, Excellent
 White 271 18' Rockflex Wing Disc
 JD BW 13' Disc
 JD 110 14' Disc
 Bush Hog 12' Cutting Disc
 Several 3 Pt. Hitch Discs- Call
 (2) IH Drag Disc
 IH 37 8' Wheel Disc
 IH 350 11' Wheel Disc
 Krause 14 9 1/2' Offset, Sharp
 Miller 3Bar 11' Offset
 White 281 12' Offset, Sharp

LOADER ATTACHMENTS

JD 145 w/5' & Valve, Fit Utility
 JD 146 w/6' & Valve, Fit Utility
 JD 146 w/7' & Valve, Fit Utility
 JD 148 w/7' & Valve, Fit 2840, etc.
 JD 158 w/8' Fit 4020 etc.
 JD 265 w/8' Fit 4430 etc.
 JD 265 w/7' & Joystick, Fit 4430 etc.
 Woods/Dual 195 w/6' & Joystick for IH Uty.
 Ford 772A w/7' Bucket
 Ford 777F w/Bale Fork