

**Binkley & Hurst Bros. Open House Offers Special Topics of Ag. Community Interest! THIS IS YOUR INVITATION**

**EVENT:** BINKLEY & HURST BROS. INC.  
**ANNUAL CUSTOMER APPRECIATION DAY & OPEN HOUSE**  
**TIME:** 7:00 AM - 5:00 PM  
**DATE:** Tuesday, January 31, 1995  
**PLACE:** Dealership Location  
 133 Rothsville Station Road, Lititz, PA

**AGENDA:** 7:00 AM Coffee & Doughnuts  
 Visit Equipment Displays & Parts Department



**10:00 AM - SEMINAR I**  
**SPEAKER:** Don Robinson  
**TOPIC:** How to Keep the Public Off Your Back & The Government Off Your Farm

**10:45 AM - SEMINAR II**  
**SPEAKER:** Carl Just - Gehl Co.  
 Myerstown Plant Manager  
**TOPIC:** What's New in Hay, Forage and Materials Handling

**11:30 LUNCH** - Visit Displays  
**1:00 PM - SEMINAR III**  
**SPEAKER:** Dennis Hahn - Case IH  
 Product Specialist  
**TOPIC:** Products of Excellence

**1:45 PM - SEMINAR IV**  
**SPEAKER:** Corp. Ralph E. Striebig - PA State Police  
**TOPIC:** WHAT'S THE LAW??  
 Information of vital importance to you concerning legal weights, farm truck licensing, under-age drivers, equipment transportation widths, special hauling permits, etc.

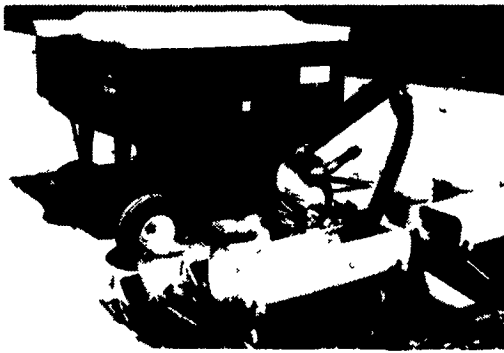


Once again we are privileged to host our Annual Customer Appreciation Day here at Binkley & Hurst Bros. As in the past we have endeavored to plan an event that will be both informative and entertaining. Issues of interest to our clients are being addressed in our seminars. Parts specials are in effect. A pork bar-b-que lunch will be served. Bring a friend and plan to spend the day.

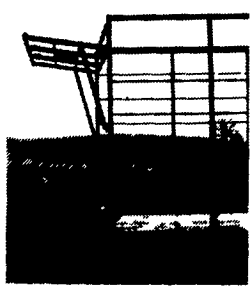
**GET READY FOR SPRING WITH YOUR FERTILIZER HANDLING EQUIPMENT FROM BINKLEY & HURST**  
 SAVE \$\$\$ By Buying Your Fertilizer Bulk By Using This Attachment On Your Truck



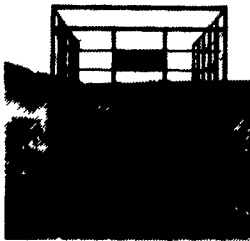
**HYDRAULIC TRUCK AUGER**



15 1/2' Folding & Other Sizes Or Pull This Gravity Bin w/Auger Attachment Behind Your Pickup Truck And Fill Your Hoppers Without Lifting A Bag!



**Unique Rear Unloading**



- 18' x 8' inside
- 14 ga square tubing, for extra strength and long life
- Front and rear openings need only 38" clearance
- End gates made of extra heavy expanded metal, and spring loaded latches
- Beds built of all oak
- 3" x 8" main beams
- 2" x 5" cross member
- Nailed with galvanized nails
- Bolted with plated bolts
- Fabricated side rail for extra strength
- 8 ton gear
- 11L tires & tubes
- Extension tongue
- Built to last

**New Chain Release Side Opening**

**Options:** Running Gears & Flat Beds  
**Comes Complete With A New Better Quality Running Gear. Place Your Order Now. Call And Ask For Amos Sr.!**

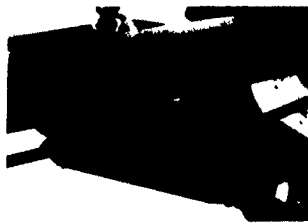
**BINKLEY & HURST BROS. INC.**

133 Rothsville Station Rd.  
 Lititz, PA 17543  
 (717) 626-4705

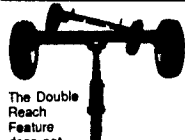
1-800-487-2978



**Horst Running Gears Come from Binkley & Hurst Bros. Inc. A Very Important Standard Feature On All Horst Wagons From 8-10-12-13 and 14 Ton Is This Unique Roller Bearing Steering.**



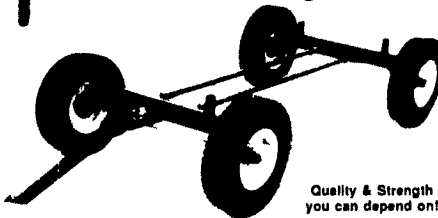
On all model wagons the steering assemblies are mounted on Taper Roller Bearings. Over 20 years field service has proven that this feature plus ball-in socket tie rod ends assures long life and no sway trailing



**12 - 13 and 14 Ton Gears Double Reach Coupling Poles Means Double Strength**

The Double Reach Feature does not cause any problem about flexibility

200N 73" Track  
 200W 78" Track  
 200H 80" Track

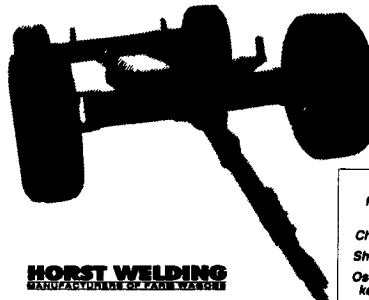


Quality & Strength you can depend on!

**Always Call Binkley & Hurst Bros. For All Your Running Gear Needs**

**14 Ton In Stock With Rocking Bolster, Also 18 Ton w/Brakes Available With Order**

**Horst Wagons... with the Highest Ton Rating and No Sway Trailing!**



**HORST WELDING**

Wide Track for Extra Stability  
 Rugged Formed Channel Steel Frame  
 Short Turning Radius  
 Oscillating Front Axle keeps load level on uneven ground

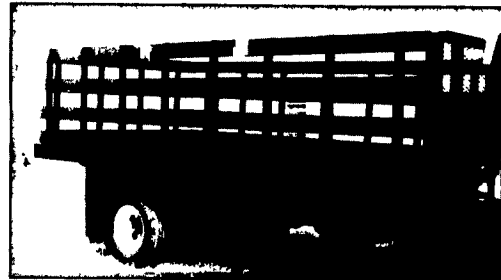


**Horst No. 140 8 Ton Farm Wagon**

- Model 140 - The Ideal Hay Wagon
- Suitable for Bale Thrower Racks
- Flat Rocks, Medium Size Grain Bins And Will Also Serve As A Medium Duty Forage Wagon.

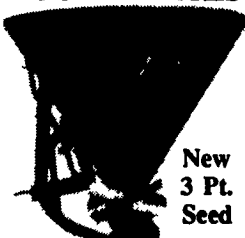
**See Binkley & Hurst For A Quality Truck Body In Stock!**

**Scott CITY STAKE BODIES**



**Don't Miss A New Quality 12 Ft. Flat Bed Truck Body With Bulk Head.**  
**(Racks Optional) 1 Only Cash & Carry Discount \$1,450 Stop In And Ask For Dean. NE0405**

**Ideal For Salt Spreading To De-Ice Driveways And Parking Lots LOOK AT THIS**



New 3 Pt. Seed

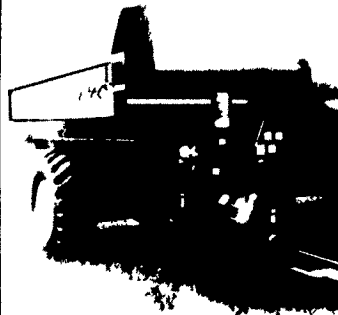
Broadcasters or Fertilizer Spreader Baked On Enamel In Stock: Approx. 600 Lbs.

**SPECIAL OFFER ONLY \$385**

Also See Binkley & Hurst Parts Dept. For Calcium De-Icing Material Bagged Ready To Use.

**In Stock!**

**NEW Kinze Grain Cart**



Model 640 With 625 Bu. Capacity Bushels Per Min. 210. Special No Trade Cash Price With Financing Available With Credit Approval!

Simply & Precisely **KINZE**

**Trailers In Stock 10,000 GVW 16 Ft. With And Without Beavertail**



**SEE US FOR ALL YOUR PARTS NEEDS-WE STOCK A LOT & CAN ORDER FOR QUICK DELIVERY! BUMPER TRAILER & PINTLE HOOKUP TRAILERS Purchase A Well Built Quality Trailer From Binkley & Hurst Today. Ask For Amos Sr.**

**BINKLEY & HURST BROS. INC.**

133 Rothsville Station Rd.  
 Lititz, PA 17543  
 (717) 626-4705

1-800-487-2978



**See Binkley & Hurst Bros. For All Your Pressure Washer Needs!**

**Special Cash & Carry Clearance Sale on The Following New & Used Pressure Washers In Stock. Don't Wait, Purchase Your Choice Now!**



**"NEW UNITS"**

- No. 9385 DeLaval Electric Pressure Washer 2.5 GPM @ 800 PSI
- No. 9428 Futura 2 HP 115 Volt 1000 PSI @ 3 GPM
- No. 9007 Giant 1500 PSI Pump
- No. 9019 Cam Spray 1200 PSI 2 HP, 220 Volt Pressure Washer
- No. 9020 Cam Spray 1200 PSI 2 HP, 220 Volt Pressure Washer
- No. 9021 Cam Spray 1200 PSI 2 HP, 220 Volt Pressure Washer
- No. 9082 Futura 1200 PSI 3 GPM 220 Volt Pressure Washer
- No. 9155 Futura 1500 PSI 2 GPM 115 Volt Pressure Washer
- No. 9184 Futura Max Hot Box Water Heater
- No. 9389 Futura LP Fired Hot Box Water Heater
- No. 9432 Futura LP Fired Hot Box Water Heater
- No. 9241 MI-T-M 3000 PSI 7 1/2 HP 220 Volt
- No. 9315 MI-T-M 3000 PSI 9 HP Diesel
- No. 9375 MI-T-M 4000 PSI 16 HP Vanguard
- No. 9012 Cam Spray 2000 PSI 5 HP, 220 Volt Pressure Washer

**"USED UNITS" (Hot Water)**

- No. 9059 WAP 1000 PSI Electric 115 Volt
- No. 9130 Northeast Steamer 150
- No. 9261 Sioux 1000 PSI, 115 Volt
- No. 9472 Kew 1500 PSI 220 Volt, Needs Work
- No. 9497 Futura 2000 PSI, 220 Volt, Needs Work
- No. 9492 MI-T-M 2000 PSI, 220 Volt
- No. 9496 MI-T-M 3000 PSI, Diesel Powered

**"USED UNITS" (Cold Water)**

- No. 9226 Porta Blast, 800 PSI, Has New Pump
- No. 9182 Futura 1500 PSI, 115 Volt
- No. 9093 Northeast, 1500 PSI, 5 HP Honda
- No. 9191 Ghibli, 1500 PSI, 220 Volt
- No. 9260 Hotay 1500 PSI, 220 Volt
- No. 9384 MI-T-M, 1500 PSI, 5 HP Briggs
- No. 9488 Cam Spray, 1200 PSI, 2 HP, 220 Volt
- No. 9390 2000 PSI, 220 Volt Pressure Washer
- No. 9264 3000 PSI, 18 HP IC Pressure Washer
- No. 9391 2000 PSI, Wisconsin Pressure Washer

**Stop In At Our Pressure Washer Dept. Now!**

**BINKLEY & HURST BROS. INC.**

133 Rothsville Station Rd.  
 Lititz, PA 17543  
 (717) 626-4705

1-800-487-2978

