

CASH FOR USED DIESEL TRUCKS!

WE NEED 1/2 TON TO ONE TON:

- FORD DIESELS
- SUPERCABS
- CREW CABS
- DODGE CUMMINGS
- 2WD OR 4X4
- DUALIES
- DUMPS
- UTILITY BODY
- FLAT BEDS
- CAB & CHASSIS

PLEASE! PLEASE! PLEASE! PLEASE!

Before you sell or trade your diesel in somewhere else for LESS.

CALL US! We Pay More for Used Diesel Trucks Than Anyone.

TRY US!

717-949-2000

Ask for Smokey or Kay



RD 7, Box 405
Lebanon, PA 17042

TRUCKS

- '94 F150 4x4, XLT V-8, A/OD A/C 1-Owner
- '93 F250 4X4, XLT V-8, A/OD, A/C Work Ready
- '93 F350 4X4 CREW CAB, XLT, V-8, A/OD, A/C, 9,000 miles
- '92 F350 12' STAKE Dump, V-8, 5 spd, 16,000 miles
- '92 F150 4X4, XLT 4.9L, A/OD, A/C, 1-owner
- '91 F250 4X4 HEAVY DUTY V-8, A/OD, A/C, XLT
- '93 CHEVY 3500 SUPER CAB 4x4, Turbo Diesel, A/C & more
- '94 GMC SONOMA SLS Super Cab, 5 spd, A/C, 15,000 miles
- '93 F150 4x4, XLT A/C, 5 Spd., Sport Truck
- '93 GMC 1500, SLE A/C, A/OD, only 8,000 miles

CARS

- '93 GEO METRO 4 Cyl., 5 spd, 34,000 miles
- '93 DODGE SPIRIT A/C, A.T., 25,000 miles
- '92 DODGE SHADOW ES, 5 spd, A/C & more
- '94 LINCOLN TOWN CAR Signature Series, Loaded
- '92 LINCOLN TOWN CAR Jack Nicklaus Edition
- '94 MERCURY SABLE SDN GS, V-6, A/OD, Power Grp
- '92 PONTIAC GRAND AM A/C, AT, 25,000 Miles
- '93 MERCURY COUGAR XR7, A/C, A/OD, Low Miles
- '90 CHEVY BERETTA A/C, AT, 1-Owner
- '93 CROWN VICTORIA V-8, A/OD, A/C, 29,000 miles

MPV'S

- '94 EXPLORER XLT A/C, A/OD, Local 1-Owner
- '91 EXPLORER SPORT A/C, 5 spd, 37,000 miles
- '92 EXPLORER XLT 4 dr, A/C, A/OD, 1-Owner
- '90 AEROSTAR ALL-WHEEL DRIVE Eddie Bauer, Dual A/C, Loaded
- '89 JEEP WAGONEER Limited, A/C, Power Equipment
- '94 JEEP GRAND CHEROKEE Laredo, A/C, only 13,000 miles
- '94 GRAND WAGONEER V-8, Loader, Low miles
- '90 JEEP CHEROKEE 4.0L, 5 spd, A/C & More
- '92 WRANGLER ISLANDER 4.0L, 5 spd, A/C, 1-Owner
- '88 BRONCO II, XLT A/C, 6 Cyl, 5 spd, 48,000 miles

ENGLE-RISSINGER AUTO GROUP

Rt. 147 Just North of Halifax
Halifax, PA 17032
The Call's On Us 1-800-242-8075
1-717-896-3421



Haulmark

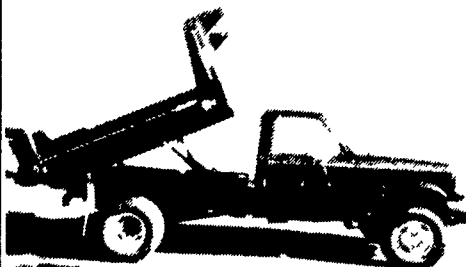
Haulmark Enclosed Trailers

- 8'x16'\$4200.00
- 8'x18'\$4350.00
- 8'x20'\$4500.00

Includes these options:
36" Side Door
Rear Ramp Door
Two Roof Vents

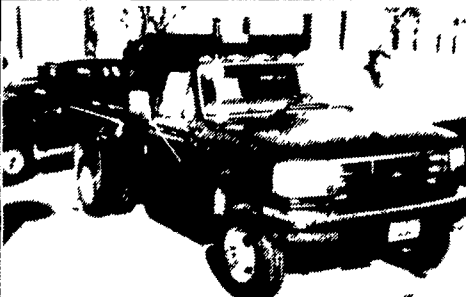
Call Ringo Hill Farms
Equipment Co., Inc.
(610) 346-7340

DIESEL



(3) 1995 F-350 4X4 THIELE 8' E-LINE CHOR BOY DUMPTRUCKS all with Ford's 7.3L Powerstroke turbo diesel, 5-speed transmission, 2-3 yd. capacity, 11,000 GVW, 1 in stock, (1) more on the way.
CALL TODAY!

DIESEL



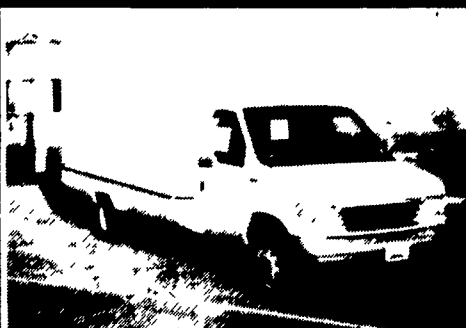
(6) 1995 F-450 SUPER DUTY THIELE 8' AND 10' E-LINE CHORBOY DUMPTRUCKS all with Ford's 7.3L Power Stroke turbo diesel, 5-speed transmission, 3-4 yd. capacity, 15,000 GVW
(4) IN STOCK, 1 COMING

DIESEL



1995 E-350 AEROCELL 16' CUBE VAN 7.3L Diesel, automatic overdrive with air conditioning
COMING IN FEBRUARY!

351



1995 E-350 AEROCELL 14' CUBE VAN 351, auto overdrive with air conditioning
IN STOCK READY FOR BUSINESS!!

Ford KELLER BROS.

RD 7, Box 405, Lebanon, PA, 17042
717-949-2000
800-309-FORD

TRUCKS

The Best Selection of New & Used Trucks Is At Pennsylvania's Leading Truck Source

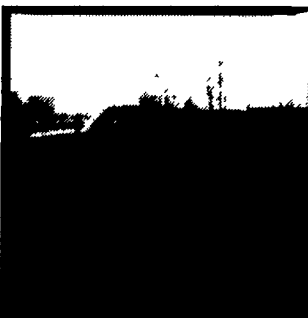
NEW HOLLAND FORD



NEW 1994 SUZUKI NPR 109" WHEEL BASE
4 cyl, 5 speed transmission, power steering & brakes, stereo & cassette, tilt steering wheel, 135 horsepower, 11,050 GVW, & More! #3145
Original Retail List. \$23,905 **SAVE \$5707**
NOW ONLY \$18,198



NEW 1995 FORD E-150 CLUB WAGON **SAVE OVER \$3275**
Loaded 8 passenger people mover! V8, 5.8L, auto/od trans, power steering & brakes, air conditioning, AM/FM stereo & cassette, cruise control, tilt steering wheel, much more! #F4318
NOW ONLY \$19,698



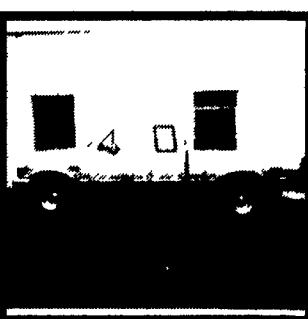
NEW 1994 FORD F-150 4x2 PICKUP **HURRY!**
6 cyl, 4.9L, 5 speed transmission, power steering & brakes, AM/FM stereo, sliding rear window, rear step bumper, aluminum wheels, XL trim, stripes, #F2632
\$219 Per Month
NOW ONLY \$12,893



1989 FORD F-250 SUPER CAB 4X4 **HURRY LAST ONE!**
351 V-8 engine, automatic trans, air cond, power steering & brakes, power wind & locks, AM/FM cassette, cruise & tilt, dark blue/silver, Ready to work for you! Hard to find! #F2862A
NOW ONLY \$13,950



1989 SUZUKI NPR CUBE VAN
14 ft. supreme body, 3.9L turbo diesel engine, 5 speed trans, power steering & brakes, a low-mileage Isuzu ready for all of your hauling needs! #3164A
NOW ONLY \$14,975



1994 FORD F-150 SUPER CAB 4X4
300 6-cylinder engine, 5 speed transmission, XLT trim, fully loaded, bought here new!, low, low miles, can't get them new! #F4450A
NOW ONLY \$21,987

Prices include rebates if applicable. '94 F-150 4x2 payment is based on 9.9% apr for 60 months with 20% cash or trade equity tax and tags additional

New Holland FORD & ISUZU TRUCKS
Route 23, New Holland PA
717-354-4901 • 800-642-8605