



1979 Chevy

350 Eng., 4x4, 400 Gal. S.S. Tank, 40' Hydraulic Booms, Foam Marker, John Blue Spray Pump, 49,000 Mi., A/C, P.S.

Price \$7,750
717-687-6535

Farm Trucks From...

THE TRUCK PLACE



'94 CHEV 3/4 TON 4X4, XTD CAB
Just Traded, Very Low Miles Teal/Silver

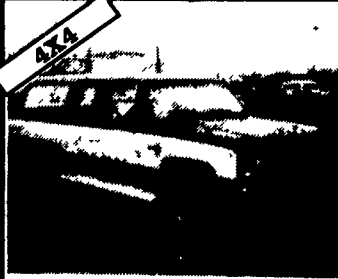


'92 CHEV C-2500 DIESEL
6.5 L Turbo, Reg. Cab, 38,000 Miles

Frederick
The SUPERMARKET OF TRUCKS

(717) 274-1461 • PA (800) 222-5523
1505 Quentin Rd., Rt. 72 South, Lebanon, PA

Over 90 TRUCKS
Truck World
2400 E. Cumberland St., Rt. 422, Lebanon, PA 17042, 717-273-7895



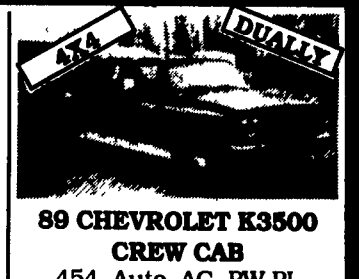
86 CHEV. SUBURBAN
1/2 Ton, 4x4, 350 V8, AT, A/C, Cruise, Tow Pkg.



81 FORD F350 DUALY
400 CID, Stick, Great Farm Truck, Bronze, #F-302 \$3,600



93 DODGE D350 DUALY
Cummins Turbo Diesel, Stick, AC, LE Pkg., PW, PL, CR., Tilt, Red & White, #D-126



89 CHEVROLET K3500 CREW CAB
454, Auto, AC, PW PL Cruise, Dually Silverado, Black/Silver, #C233, 52300 Miles



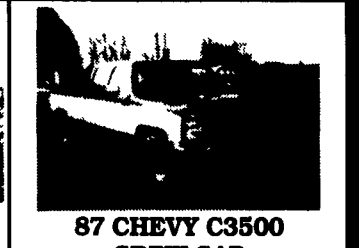
80 INT. DUMP W/ FLOW
360 Gas, 26,000 GVW, 12 Ft. Blade Ready for Snow, #I-108



88 CHEV K-1500 4x4
w/Power Angle Plow, AT, AC, V8, Ready For Snow, 2 To Choose From #C222



89 MITSUBISHI NPR
14 Ft. Stake Body w/Liftgate, AT, Turbo, Diesel, PS, PB, 33,000 Mi., 13,000 GVW #M107



87 CHEVY C3500 CREW CAB
350 Auto, A/C, 4+2, Long Box, Nice Truck, Brown/Tan #C223



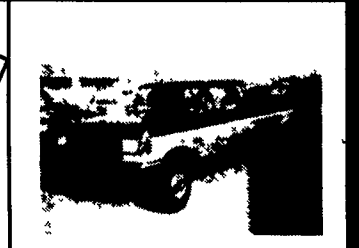
91 FORD F250 SUPER CAB
4x4, XLT Lariat, 351 V8, AT, A/C, Cruise, Tilt, Heavy Duty, Red & White #F-301



93 CHEV. G-30 CUBE VAN
12 Ft. Box, 350 V8, AT, AC, 37,000 Miles, Like New #C-232



'92 DODGE POWER RAM 250
Cummins Turgo Diesel, 4x4 Extend Cab, Le Trim, 5-Spd., Only 47,000 Miles #D-125



90 FORD F250 S.C. 4X4
7.3 Diesel, Stick, Long Bed, 60,000 Mi., Bronze/Mocha #F293

Nicest Pre Owned Trucks Anywhere!

RTE. 422 WEST LEBANON, PA

(Across From Lebanon Valley Mall)



PHONE 717-274-2000

Business Hours
Mon - Thurs 9-9
Fri & Sat 9-4

SPECIALIZING IN HEAVY DUTY TRUCKS



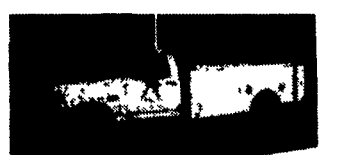
Diesel 4DR 4x4 93 Ford F-350 XLT
It's Nice, Only 17,000 Miles, 7.3 Diesel, AT, A/C, Limited Slip 4:10 Tow Pkg



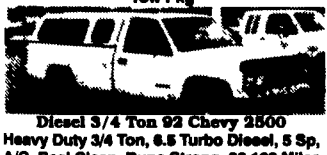
4x4 Turbo Diesel 93 Ford F250 XLT
Real Nice, Only 25,700 Miles, 7.3 Turbo Diesel, 5 Sp, A/C, Tow Pkg., Factory Warranty



Stake Body Dump 90 Ford F-350
12 Ft. Body, 50,100 Miles, Works Well, Runs Great, 460 f.i., 5 Spd.



Utility With Liftgate 88 Ford Super Duty
11 Ft. Body with Electric Lift Gate, Only 64,000 Miles, 7.3 Diesel, 5 Spd.



Diesel 3/4 Ton 92 Chevy 2500
Heavy Duty 3/4 Ton, 6.5 Turbo Diesel, 5 Sp, A/C, Real Clean, Runs Strong, 36,122 Miles



4x4 4 DR Dually 88 Chevy Crew Cab
The Nicest Anywhere Come See & Drive, 20,800 Original Miles, 454, AT, A/C, Loaded, The Finest



4x4 Diesel Power 93 Ford F-250 XLT
Truly Nice, 7.3 Diesel, 5 Spd, A/C, All Options, 4:10 Gears, 30,000 Miles



Cheap Diesel, 4 Wheel Drive, 87 Ford F-250 XL
Diesel, A/C, Dual Tanks



1 Ton 4x4 93 Ford F-350 XLT
Only 14,000 Miles, Strong 460 f.i., Auto, A/C, Dual Tanks, Tow Pkg., Very Very Nice



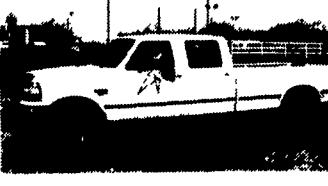
Diesel Cargo Van 93 Ford F-350
Extend Length, Diesel, AT, A/C, Low Miles, Ready to Work



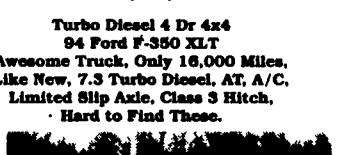
Super Duty Chassis 94 Ford F-450
137 W.B. 460 f.i., 5 Sp. O/D, Air Conditioning, 15,000 GVW, Only 18,000 Miles



4x4 Club Cab Dually Cummins Turbo Diesel 92 Dodge D350 LE
Perfect, Only 53,000 Miles, Auto, A/C, Limited Slip Axle Tow Package, Real Strong



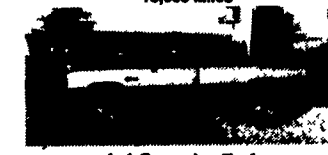
4x4 Club Cab 93 Dodge 250 LE
Cummins Turbo Diesel, HD, 5 Sp., A/C, Tilt, Cruise, Tow Pkg., Remainder Factory Warranty



Turbo Diesel 4 Dr 4x4 94 Ford F-350 XLT
Awesome Truck, Only 16,000 Miles, Like New, 7.3 Turbo Diesel, AT, A/C, Limited Slip Axle, Class 3 Hitch, Hard to Find These.



Flatbed Dump 87 Ford F-350
Diesel, Auto, Flatbed Dump Dual Tanks, Hitch, Ready To Go



4x4 Cummins Turbo 92 Dodge 250 LE
Diesel Power, Heavy Duty 3/4 Ton, A/C, Tow Pkg, Real Clean, Only 29,000 Miles



L-Pak Dump 86 Ford F-350
Diesel Power 4 Sp., Very Convenient, Utility Boxes, Behind Cab, Clean Truck, Runs Well



4x4 Club Cab 93 Dodge 250 LE
Cummins Turbo Diesel, HD, 5 Sp., A/C, Tilt, Cruise, Tow Pkg., Remainder Factory Warranty



4x4 Super Cab Dually 91 Ford F-250 XLT
Rare Find, Diesel, 5 Spd, A/C, Captain Chairs, Custom Wheels, Good Looker



Diesel 1 Ton Flatbed 93 Ford F-350 XL
Only 38,000 miles, 7.3 Diesel, AT, O/D, A/C, 11,000 GVW, Dual Tanks, Tow Pkg., Class 3 Hitch



Diesel 3/4 Ton 4x4 93 Ford F-250 XL
Heavy Duty, Only 21,000 miles, 7.3 Diesel, 5-Spd., A/C, Dual Tanks, Real Nice, 2-Tone, New Insp. & Tires



4x4 Crew Cab 88 Ford F350
Ready For the Family or The Work Crew, V8, Auto, A/C, Excellent Body & Paint, Lock Out Hubs



Diesel Chassis 91 Ford F Super Duty
Only 65,000 Miles, 7.3 Diesel, 5 Spd, A/C, Long 161 W.B., Dual Tanks, 15,000 GVW



Roll Back 90 Ford F-350
V8, 4 Spd., 17 Ft. Steel Bed