

Central U.S. Carlot

Pork Report
Tuesday, January 11, 1995
Report supplied by USDA

CENTRAL U.S. CARLOT PORK REPORT FOB OMAHA BASIS INCLUDES MAJOR PRODUCTION AREAS IN MIDWEST AS OF 3 P.M. COMPARED MONDAY'S 3:00 PM CLOSE: FRESH LOINS GENERALLY STEADY TO FIRM; BUTTS 1.00-2.00 LOWER; SKND. HAMS 17-20 LBS. FIRM, 20-26 LBS. STEADY; SDL. BELLIES STEADY TO 1.00 LOWER. TRADING SLOW TO MODERATE, WITH LIGHT TO MODERATE DEMAND AND MOSTLY MODERATE OFFERINGS.

LOADS PORK CUTS: 66.5
24.0 LOADS TRIM/PROCESS PORK/ PORK CUTS

LOINS, REGULAR, FRESH
14-18 LBS., 10.0 LOADS, RANGE 92.00-99.00, WGHTD. AVG. 95.75.

1/2" TRIM 14-18 LBS., 8.5 LOADS,
RANGE 110.00-118.00, WGHTD. AVG. 113.06.

1/2" TRIM 14-18 LBS., 1.5 LOADS,
RANGE 125.00, WGHTD. AVG. 125.00.

18-22 LBS., * RANGE 94.00, WGHTD.
AVG. 94.00 A.

1/2" TRIM 18-22 LBS., RANGE 113.00,
WGHTD. AVG. 113.00 A.

LOIN, BNLS CNTR CUT
5-9 LBS. STRAP-OFF, RANGE 215.00-224.00, WGHTD. AVG. 220.47 A.

TENDERLOIN
1.25 LBS. AND DOWN, RANGE

298.00, WT. AVG. 298.00 A.

PICNIC, FRESH
SMKR TRM, RS., COMBO, 1.0

LOADS, RANGE 41.00, WT. AVG. 41.00.
SMKR TRM, SS, BOXED, 2.0 LOADS,
RANGE 49.00-51.00, WT. AVG. 49.50.

BOSTON BUTT
4-8 LBS., * 9.0 LOADS, RANGE 54.00-58.00, WGHTD. AVG. 56.00.

1/2" TRIM 4-8 LBS., 9.0 LOADS,
RANGE 72.00-76.00, WGHTD. AVG. 74.00.

COMBOS 8 LBS. AND UP, RANGE
35.00, WGHTD. AVG. 35.00 B.

SPARERIB, FRESH
1.5-3.5 LBS., 1.0 LOADS, RANGE 87.00, WGHTD. AVG. 87.00.

0.5 LOADS, RANGE 72.00, WGHTD.
AVG. 72.00.

LOIN BACKRIB (BOXED)
FRSH/FRZN
1.5 LBS. AND DOWN, RANGE 285.00,
WGHTD. AVG. 285.00 D.

1.75 LBS. AND DOWN, RANGE
257.00, WGHTD. AVG. 257.00 D.

1.75-2.00 LBS. RANGE 214.00,
WGHTD. AVG. 214.00 E.

2 LBS. AND UP, RANGE 199.00,
WGHTD. AVG. 199.00 B.

LOIN BACKRIB (COMBOS)
FRSH/FRZN
1.75 LBS. AND DOWN, RANGE 204.00, WGHTD. AVG. 204.00 E.

HAM, SKINNED, SELECTED
FRESH 17-20 LBS., 8.0 LOADS,
RANGE 48.00, WGHTD. AVG. 48.00.

FRESH 20-26 LBS., 12.0 LOADS,
RANGE 48.00-51.00, WGHTD. AVG. 49.83.

HAM SKINNED, COMMODITY -
FRESH 17-20 LBS., RANGE 49.00,
WGHTD. AVG. 49.00 B.

FRESH 20-26 LBS., 1.0 -LOADS,
RANGE 45.00, WGHTD. AVG. 45.00.

FRESH 32 LBS. AND UP, RANGE
44.00, WGHTD. AVG. 44.00 B.

BELLY, SDL, SKIN-ON, FRESH
FRESH 10-12 LBS., 1.5 LOADS,
RANGE 27.00, WGHTD. AVG. 27.00.

FRESH 12-14 LBS., 6.0 LOADS,
RANGE 35.00-37.00, WGHTD. AVG. 36.17.

FRESH 14-16 LBS., 10.0 LOADS,
RANGE 35.00-37.00, WGHTD. AVG. 36.30.

FRESH 16-18 LBS., 3.0 LOADS,
RANGE 33.50-34.00, WGHTD. AVG. 33.67.

FRESH 18-20 LBS., 1.0 LOADS,
RANGE 30.00, WGHTD. AVG. 30.00.

FRESH 20-25 LBS., 0.5 LOADS,
RANGE 21.50, WGHTD. AVG. 21.50.

PORK TRIMMINGS/
BONELESS PROCESSING PORK
(CHEMICAL LEAN)

COMBO 42% FRESH, 8.0 LOADS,
RANGE 26.00-28.00, WGHTD. AVG. 26.25.

BOXED 42% FROZEN, RANGE 23.00,
WGHTD. AVG. 23.00 D.

COMBO 72% FRESH, 15.0 LOADS,
RANGE 34.00-36.00, WGHTD. AVG. 35.00.

BOXED 72% FROZEN, 1.0 LOADS,
RANGE 39.00, WGHTD. AVG. 39.00.

PICNIC CUSHION MEAT
COMBO 92% FRESH, RANGE 106.00,
WGHTD. AVG. 106.00 E.

BOXED 92% FROZEN, RANGE 90.00,
WGHTD. AVG. 90.00 E. BONELESS
PICNIC MEAT

COMBO 72% FRESH, RANGE
42.00-43.00, WGHTD. AVG. 42.17 A.

BOXED 72% FROZEN, RANGE 45.00,
WGHTD. AVG. 45.00 A.

WGHTD. AVG. 45.00 A.
SKINNED JOWLS
COMBO FRESH, RANGE 25.00,
WGHTD. AVG. 25.00 C.

BOXED FROZEN, RANGE 23.00,
WGHTD. AVG. 23.00 A.

NOTE! (*) REFLECTS 1/2" OR 3/4" TRIMMED PRODUCT BROUGHT BACK TO A REGULAR COMMODITY BASIS.

ABCDE AFTER QUOTES REPRESENTS DAYS SINCE LAST ACTUAL MARKET TEST. QUOTES ARE DROPPED AFTER 5 DAYS OF NO TEST OR BEFORE IF THEY NO LONGER REFLECT CURRENT MARKET CONDITIONS.

PORK CARCASS CUTOFF
WEDNESDAY, JANUARY 11, 1995

ESTIMATED GROSS CUTOFF VALUES OF A 175 LB. HOG CARCASS BASED ON USDA CUTTING YIELD TESTS AND CARLOT PRICES. WEDNESDAY'S CARCASS GRADES AND PRICES PER CWT.:

US#1 54.92, CHANGE FROM TUESDAY'S VALUE UNCHANGED; US#2 53.35, CHANGE FROM TUESDAY'S VALUE -0.01; US#3 51.79, CHANGE FROM TUESDAY'S VALUE -0.01; US#4 50.23, CHANGE FROM TUESDAY'S VALUE -0.01.

TODAY'S CALCULATIONS FOR
US#2 175 LB. PORK CARCASS:

SKINNED HAMS, 14-20 LBS., 21.01% OF CARCASS, 48.00 FOB VALUE, 0.50 CHANGE FROM TUE.; LOINS, 1/2" TRIM, 14-22 LBS., 20.33% OF CARCASS, 114.50 FOB VALUE.

BELLIES, SDL, 12-14 LBS., 13.90% OF CARCASS, 36.00 FOB VALUE; SPARERIBS, 3.5DN LBS., 3.03% OF CARCASS, 87.00 FOB VALUE.

PICNICS, 8-12 LBS., 10.31% OF CARCASS, 28.50 FOB VALUE; BUTTS, 1/2" TRIM, 4-8 LBS., 7.25% OF CARCASS, 74.00 FOB VALUE, -1.25 CHNAGE FROM TUE.

JOWL, 2.85% OF CARCASS, 25.00 FOB VALUE; NECKBONES, 1.52% OF CARCASS, 9.00 FOB VALUE.

FEET, 1.05% OF CARCASS, 20.00 FOB VALUE; TAILS, 0.22% OF CARCASS, FOB VALUE 24.00.

TRIM 72%, 2.19% OF CARCASS, 35.00 FOB VALUE, -1.00 CHANGE FROM TUE.; LARD 10.85% OF CARCASS, 20.00 FOB VALUE.

TOTAL CARCASS 94.51%. US#2 CARCASS VALUE PER CWT. 53.35. NOTE: VALUE MAY CHANGE WITHOUT ADEQUATE TEST.

Valley Stockyards
Athens, Pa.
January 9, 1995
Report supplied by auction
HOLSTEIN HEIFER CALVES TO 207.50.

VEAL CALVES TO 65.00.
VEALER BULL CALVES 80.00-112.50.
SLAUGHTER CALVES 59.00 AND DOWN.
GRASSERS & FEEDERS 28.00-42.50.
LAMBS TO 85.00.
SHEEP 31.00-40.00.
HOGS 200-250 31.00-32.50.
SOWS, NONE.
BOARS, NONE.
PIGS 15.00-18.00.
HEIFERS 42.50-50.50.
STEERS, NO GOOD ONES.
FEEDER STEERS 50.00-65.00.
BULLS 38.00-48.00.
GOOD COWS 37.00-46.50, 43.00 TOP.
COWS MEDIUM 34.00-36.00.
COWS POOR OR SMALL 33.00 AND DOWN.
CATTLE MARKET STEADY.
CALF MARKET BASIER.
HORSES, NONE.
PONIES, NONE.
GOATS TO 70.00.

Pennsylvania Livestock Auction
Waynesburg, Pa.
Thursday, January 12, 1995
Report Supplied by Auction
CATTLE: SL. COWS: UTILITY & COMMERCIAL 37.00-45.00; CUTTER & BONING UTILITY 36.00-43.00; CANNER & LOW CUTTER 30.00-36.00; SHELLS 30.00 & DOWN.
BULLS: YIELD GRADE 1 1500#-2000# 43.50-57.50. YIELD GRADE 2 1000#-1400# 42.00-53.00.
FEEDER STEERS: M & L 1 300-500# 50.00-86.00; 250-280# 65.00-90.00; M 600-900# 50.00-71.00. HEIFERS M 1 & L 1 300-500# 50.00-80.50; L 1 400-650# 48.00-75.00; BULLS M & L 1 300-620# 45.00-78.00.
CALVES: VEAL.. PRIME 90.00-98.00; CHOICE 80.00-88.00; GOOD 50.00-77.00.
FARM CALVES: #1 HOLSTEIN BULLS 90-120#FEW 75.00-110.00; #2 HOLSTEIN BULLS 80-100#FEW 55.00-75.00; BEEF X BULL&HFRS./HD. 50.00-80.00.
HOGS: BARROWS & GILTS #1-2 210-255# 30.00-35.50; #2-3 255-280# 30.00-32.00, SOWS #1-3 300-500# 15.00-25.00.
FEEDER PIGS: 1-3 15-20#; 1-3 25-35# 10.00-20.00/HD.
LAMBS: HIGH CHOICE 55-75# 70.00-100.00; CHOICE 90-105# 55.00-77.00; FEEDER LAMBS GOOD 50.00-90.00; SHEEP 25.00-42.00.
GOATS: LARGE 40.00-90.00/HD; MEDIUM 30.00-60.00/HD.; SMALL 10.00-30.00/HD.
HORSES: 40.00-67.00; PONIES 20.00-57.00.

When minutes count, count on the MF 3075.



Don't get me wrong.
We sure need the rain.
But I've got to get these bales in first. In 20 minutes this field will be a lake.
Thanks to this new Massey Ferguson 3075, I just might make it.

The MF 3075's unique 86 hp Quadram-combustion Perkins engine delivers more torque on less fuel than any conventional diesel engine. Plus it's smoother and quieter.

Wow! Listen to that thunder. It's getting close.

MF's exclusive Dynashift transmission combines the economy of a manual shuttle shift with the convenience of a 4 speed powershift.

Shuttle to reverse. Powershift down. Shuttle forward. Powershift up. I'd never make it with any other transmission.

Economy PTO Electronic Linkage Control Autotronics Strong parts and service support High resale value See it all today only at your Massey Ferguson dealer.

Made it! That's the last one.
OK rain. I'm just going to sit here in the cab, listen to the stereo, and enjoy it.

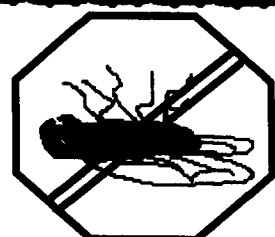


Massey Ferguson is a wholly owned subsidiary of AGCO Corporation, Dalton, GA. Manufacturer's listed PTO horsepower.

SEE YOUR NEAREST DEALER FOR DETAILS

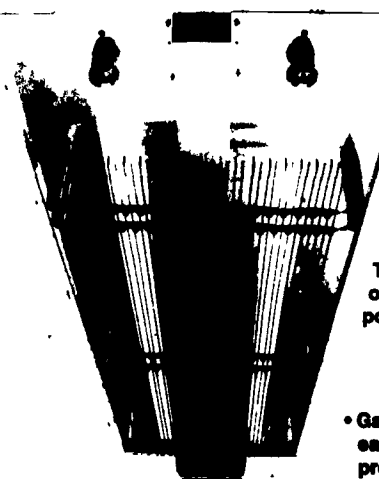


Once there were Flies, Now they are GONE!!



EFFECTIVE FLY CONTROL

The AG-3030 is constructed of rust proof Aluminum. It has a large electrocuting grid that is powered by a high output industrial transformer. The AG-3030 will not become overwhelmed or clog by large fly populations.



• Gardners AG-3030 makes fly control easy and effective. This rugged unit provides safe and sanitary fly control without harmful chemicals.

• Easy to install-

• Low Maintenance --

• Energy efficient-- uses less than 2.5 ampe/unit

• Rapid Return on Investment

• Extensive USDA testing completed at Maryland EGG facility.

• 1 Year Warranty

Dimensions: 56"L x 19"W x 6"H
Shipping Weight: 36 lbs.

HERSHEY
EQUIPMENT CO., INC.

255 Plane Tree Drive
Lancaster, PA 17603
(717) 393-5807

We Take Customer Satisfaction Personally