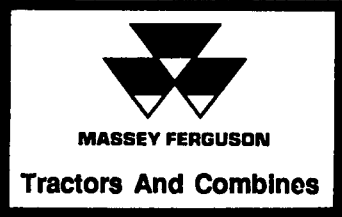


SINCE 1936
M.M. WEAVER & SONS, INC.



Leola, PA 17540 Phone: (717) 656-2321
 Located: 4 miles West of New Holland on Rt. 23, 1 1/2 miles Northeast of Leola on the No. Groffdale Rd., 1 mile on the right, opposite Groffdale Mennonite Church.

CASH SALES DAYS
59th Anniversary Discount Days
 • PARTS • NEW EQUIPMENT • GOOD USED EQUIPMENT
 Now thru January 31st, 1995
 Mon. thru Fri. 7 AM to 5 PM, Sat. 7 AM to 12 Noon All Items Subject To Availability

Coming Soon...
OPEN HOUSE
Feb. 10, 1995
 • Manufacturer Reps On Hand
 • New Machinery On Display
 • Free Lunch 7:00 am - 5:00 pm

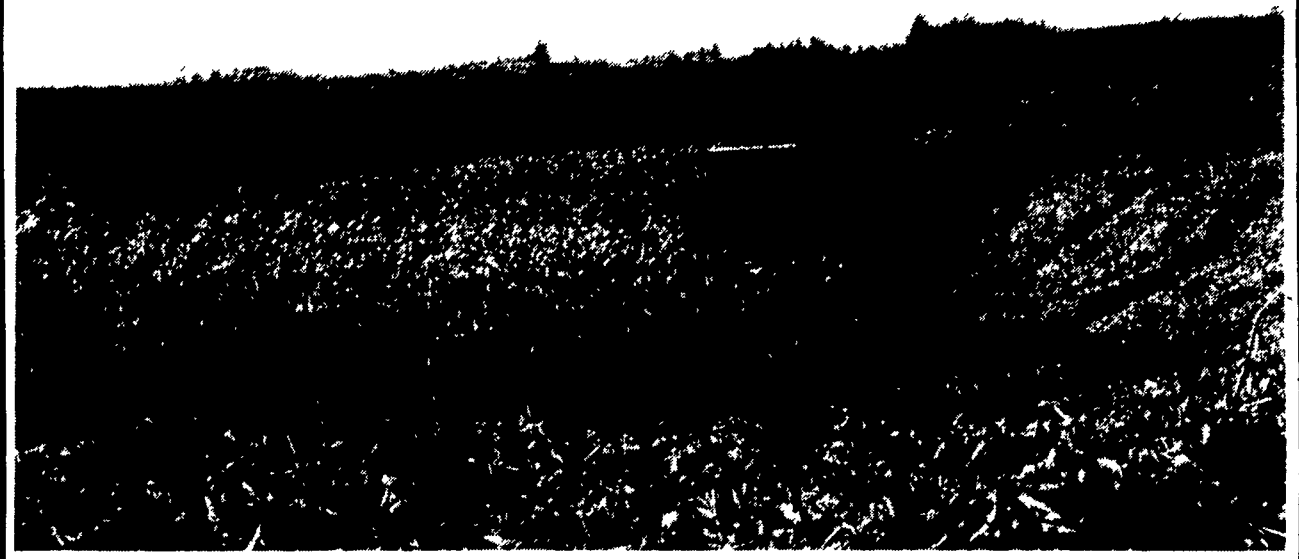
- USED TRACTORS**
- MF 3660, 4 WD, 140 HP, Rental Unit \$46,000
 - MF 285, 84 HP \$11,000
 - MF 3525, 108 HP \$15,000
 - MF 2675, 100 HP \$11,700
 - MF 253, 48 HP \$14,000
 - AC "C" With Loader \$1,500
 - MF 1155 With Cab, 140 HP \$9,500
 - MF 30E With Loader, 700 Hrs. \$19,500
 - MF 265, Diesel, Multiprover, Very Nice
- USED COMBINES**
- 1980 MF 550 4 Wheel Drive \$19,000
 - 1982 MF 860 With 1163 Corn Head \$22,000
 - NH TR70 SP 4 WD Combine With 6 Row 30" Corn Head 15 Ft. Flex Head \$12,000
 - Cleaner "M" Combine \$6,000
- USED HARVESTER**
 Just Traded
- Class 695, 4WD SP Forage Harvester w/Roller Mull, 475 Hrs., 6 RN Corn Head, 10' Hay Pickup Head
 - Fox Super E SP Forage Harvester With 3 Row 30" Corn Head and 6 Ft. Hay Pickup \$13,500
 - New Idea 709 4WD Uni System With 767 Forage Harvester, 768 w/n Corn Head, 766 Grass Head \$17,000
 - 7650 Field Queen 4WD SP Harvester With Hay Pickup
 - Gehl 1200 Pull Type 3 Row Forage Harvester w/Hay Pickup \$4,500
- HAY EQUIPMENT**
- Gehl 1460 Round Baler (4x5) \$6,500
 - Class 66 Rollant Baler Twine & Net \$14,000
 - Demo 1511E 5x6 Round Baler. \$9,900
 - 5 KM321 Disc Mower Conditioner 10 1/2 Ft. Cut Priced From \$4,900 to \$11,500
 - KM281 Disc Mower Conditioner, 9 Ft. Cut. \$4,500
 - JD 709 3 Pt. Rotary, 7 Ft. Cutler. \$1,500
 - Woods RM 500 3 Pt. 5 Ft. Cut Mower. \$600
 - Bush Hog 3 Pt. 5 Ft. Cut Mower \$500
 - Rental Model Kvemeland Silage Bale Wrapper
 - New Holland #850 Elec Tie Round Baler. \$2,500
- MANURE & FEEDING EQUIPMENT**
- Wie 3000 Tank Spreader, Completely Rebuilt..... \$5,500
 - Hedlund Marton Scavenger II Manure Spreader..... \$3,000
 - Knight 716 Side Slinger Manure Spreader Mounted on '79 Mack "R" Tandem Axle Truck, 54,000 GVW \$19,500
 - S.F.M. 1100 Gal. Liquid Spreader \$3,500
 - Teagle Bale Shredder..... \$1,900
 - Swartz 880 T.M.R. Mixer Wagon \$3,500
 - #1830 Oswald-Butler T.M.R. Mixer Wagon
- PLOWS & TILLAGE**
- JD 5-16" Hyd. Reset Plow..... \$1,150
 - M&W 5 Tooth V Ripper \$5,700
 - Sovema 6 Ft. 3 Pt. Rotor Tiller..... \$1,400
 - Sovema 4 Ft. 3 Pt. Rotor Tiller..... \$600
 - Brillion 15 Ft. Cultumulcher \$4,500
- MISC. EQUIPMENT**
- Brady 12 Ft. Flail Shredder \$5,500
 - Brady 6 Ft. Flail Shredder..... \$2,200
 - MF1017 Backhoe for MF 1035..... \$3,900
 - EZ Trail 475 Bu. Grain Cart..... \$5,900
 - 7 Ft. 3 Pt. Scraper Blade..... \$305
 - 2 EZ Trail Bale Basket..... @ \$2,600
 - Vicon Feeders, Main Station \$2,500
 - Rebuilt Augers, Sub Station \$1,500

The high quality of corn forage produced by the JAGUAR is derived from the CLAAS corn cracker. Two saw toothed rollers run at different speeds with 20% difference open up virtually every kernel and this means good quality silage which is easily digested. This makes for highest energy transfer for higher milk and meat yields. The rollers are subject to wear and tear, so the CLAAS corn cracker features removeable outer sleeves. The shafts, drive pulley and bearings are all reused, thus reducing maintenance costs. Foreign bodies pass through thanks to a spring loaded mechanism.

Every grain opened up



CLAAS



Leveling your hills.
 The optional Hillside Cleaning System automatically swings the top sieve sideways, against the slope of the hill. This keeps grain spread out evenly for cleaner grain samples. You get full performance on slopes up to 20%, without the big expense of a hillside combine.



WE REPAIR AUGERS

BEFORE

AFTER

Get Your Table Auger Repaired For Your Combine
 Replace Complete Section. Same As New. All Makes And Models. Why Buy New, Get Your Auger Repaired SAVE!!!