

# Sheep Breeds Compete At Farm Show

**EVERETT NEWSWANGER**  
**Managing Editor**  
**HARRISBURG** (Dauphin Co.) — The lengthy sheep show for the meat breeds began Sunday morning, lasted all day into the evening and continued Monday morning with the climax of naming the supreme champion from all breeds. Judge Mark Johnson from Maryland had many deep classes. And when the final championship drive was held in the small arena, any one of the breed champions had merit to be named to the top spot of the show.

Finally, when it came to pick from the top Ram, the Dorset shown by Mike and Wendy VanWagner, and the top ewe, the Cheviot shown by Marlyn and Alice Stroh for the supreme champion, Judge Johnson said both were worthy of the banner. But since he had to pick only one, The ewe became the supreme champion of the meat breeds.

The champion comes from Erdenheim Farm, Lafayette Hill in

Montgomery County. The reserve champion Cheviot ewe was shown by Michelle Snyder, Parker in Clarion County.

Both the champion and reserve champion Cheviot ram was also shown by Erdenheim Farm.

The VanWagner's own VanBair Farm located in Dauphin, Dauphin County. Jaime Faught, Carlisle in Cumberland County had the reserve champion Dorset ram.

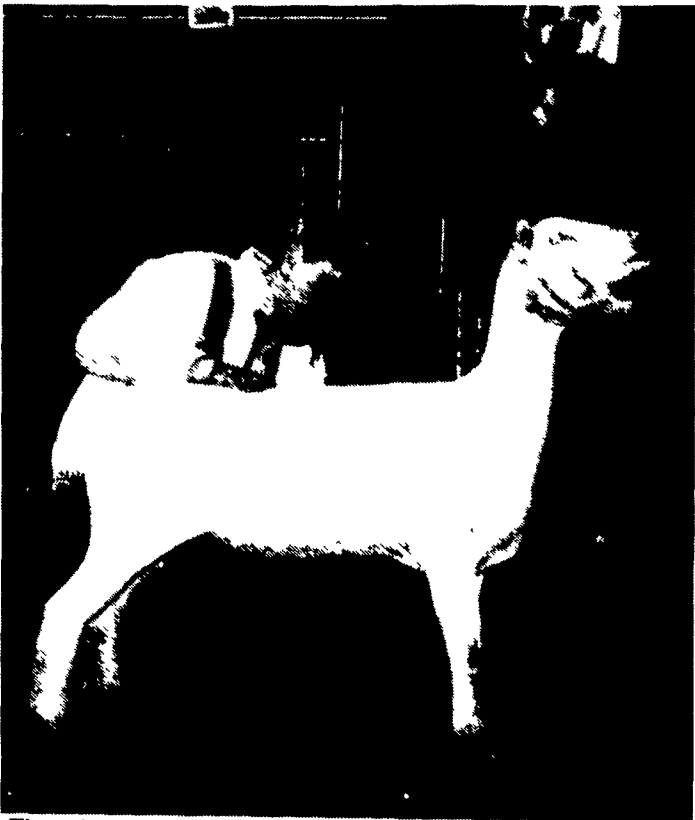
Lee and Louise Wagner, Easton, Northampton County had the champion Dorset ewe, and Haven Point Dorsets, New Castle, in Lawrence County had the reserve champion Dorset ewe.

In the Hampshire breed, Wey Farms, Kutztown, Berks County the the champion ram and Matt Trostle, Red Lion, York County had the reserve champion ram.

Lewis Hampshires, Mt. Joy, in Lancaster County had the champion Hampshire ewe. Tim and Sarah Fleener, Robesonia Lebanon County had the reserve champion ewe.



The champion ram of the meat breeds was the Dorset shown by VanBair Farm of Dauphin in Dauphin County. In the photo from left, Stephnie Bowman, Pennsylvania Lamb and Wool Queen; Mark Johnson, judge; Mike and Wendy VanWagner, owners; and Ed Arnold, deputy ag secretary.



The champion Southdown ewe was shown by Jenifer Flinchbaugh, York, York County.

Breezewiew Farm, Atglen, Chester County, had the champion Suffolk ram and Lyn Lee Farms, State College, Centre County had the reserve champion ram.

In the Suffolk ewe classes, the winners were reversed with Lyn Lee Farms having the champion ewe and Breezewiew Farm the reserve champion ewe.

In the Southdown breed, Darla Phillips-Rapasky Shee, from Amity in Washington County had the champion ram. Steve Kwisnek, Clarksburg, Indiana County had the reserve champion ram.

In the Southdown ewe classes, Jennifer Flinchbaugh, York, York County had the champion and Steve Kwisne had the reserve champion ewe.

And in the Oxford show, Amy Sue Eshelman, Sinking Spring, Berks County had the champion  
 (Turn to Page D3)



The champion Suffolk ram was shown by Breezewiew Farm, Atglen Chester County.



The supreme champion of the sheep meat breeds was the Cheviot ewe shown by Erdenheim Farm of Lafayette Hill in Montgomery County. In the photo from left, Ed Arnold, deputy ag secretary; Mark Johnson, judge; Stephnie Bowman, Pennsylvania Lamb and Wool Queen; and Marlyn and Alice Stroh.



The champion Cheviot ram was shown by Erdenheim Farm.