

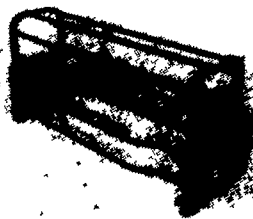
FARMER BOY AG INC.

Your Complete Poultry & Swine Building & Equipment Center



Farmer Boy Ag Stabling
Buy Direct From The Mfg. & Save For Your Existing Or New Equipment Needs.

MODEL 70 SWING-SIDE



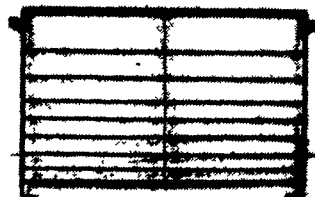
FEATURES:
 Standard - 3 position adjustment for sow comfort; Swing-side easily adjusts to size of sow; Standard - bowed-bar sides; No cylinders!; No sharp edges!; Front & Rear Gates swing both right and left; Large, efficient stainless steel feeder has no sharp edges!; Pig-saver bar decreases death rate of piglets; Rubber bumper guards reduce noise and injury!; Feeder raised off of floor to increase ventilation for sow comfort.

OPTIONS:

- Pig-saver bar OR finger bars
- Black iron, hot-dipped galvanized, or painted
- Rump guard on rear door
- Creep sets: stainless steel, hot-dipped galvanized or PVC
- Crate stands: hot-dipped galvanized, painted, or black iron
- Water set-up: stainless steel or hot-dipped galvanized pipe

SPECIFICATIONS: 1" schedule 40 pipe construction, Bottom 6" on legs are 1" solid rod.

HORIZONTAL



OPTIONS:

Pin Style
 For the gate to open, this style pin needs to be lifted ONLY one-third of the distance resulting in convenience for the operator and a decrease in the amount of pins lost!

Leg Style
 Standard stainless steel welded on Bolt-on; This leg adds stability and is easily fastened to floor. Can be sold separately for easy replacement 1/4" or 3/8"

SPECIFICATIONS

Nursery	3/8" rods in center Angle 1/8"x1"x1" 3/16" Vertical Rats	1/2" rods on bottom	28" high
Grower	1/2" rods in center	3/4" rods on bottom	32" high
Finisher	1/2" rods in center	3/4" rods on bottom	32" high
Breeding	1/2" rods in center Angle 3/16" x 1 1/2" x 1 1/2" 1/4" Vertical Rats	3/8" rods on bottom	44" high

Height is measured installed from floor to top of fencing

DOSATRON LIQUID DISPENSER

Accurately Meter...Antibiotics
 • Coccidiostats • Drugs
 • Disinfectants • Sulfas
 • Vaccines • Wormers
 • Vitamins • Fertilizers
 • Chemical Additives...into Livestock and Poultry Drinking Water or into Irrigating Systems



Adjustable ratios: 1:100, 1:128, 1:200
 Dosatron 7 GPM Technical Specifications:
 Adjustable Ratio: 1:100, 1:128, 1:200
 Minimum Flow: 13 GPH
 Maximum Flow: 400 GPH
 Min. Oper. Pressure: 7 PSI
 Max. Oper. Pressure: 72 PSI
 Connections: 1/2" NPT
 Dimensions: Height 11" Width 8" Weight: 3.5 lbs.

SUNNE THERMOSTAT

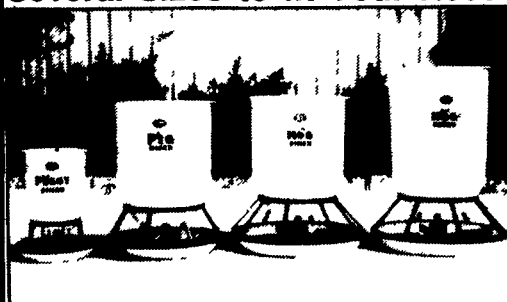


Thermostat Has A Sealed Molded Plastic Case With All Exposed Metal Parts Of Stainless Steel, Intended For Applications That Need A Rugged Weatherproof Type Control Suitable For Either Heating Control Or Cooling Control Also Available Remote w/Plug-In Cord

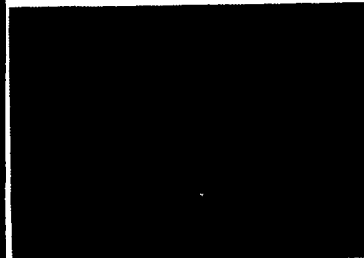


HOG DINERS

Several Sizes to fit Your Needs



Left to Right Piggy Diner (1 1 Bushel Capacity), Pig Diner (5 5 Bushel Capacity), Hog Diner (5 5 Bushel Capacity), Large Capacity Hog Diner (7 5 Bushel Capacity)



4-Hole Double-Sided Finishing Feeder

Features:

- 304 Stainless Steel construction.
- All welded construction.
- Easily adjustable and multi-movement agitator gate.
- All exposed edges are hemmed for safety.
- Standard Single-Sided models available with 4, 5 and 6 holes; Standard Double-Sided models available with 8, 10 and 12 feed holes. 7 hole and 14 hole sizes available (special order only).



Flex-Flo Auger System



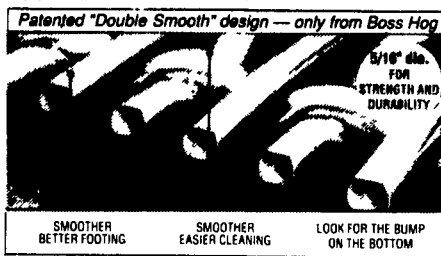
Flex-Flo System	Model 230	Model 300	Model 330	Model 500	Model 550
Tube Diameter	2 1/4"	3"	3 1/2"	5"	3 1/4"
Tube Corner Radius	10"	6"	6"	6"	6"
Maximum Single System Length	250'	200'	150'	150'	150'
Recommended Motor Size at Maximum Length (Horse power)	1/2	1	1	1 1/4	1
Capacity (Lbs./Minute at 40 Lbs. per Cu. Ft.)	15	50	100	220	50
Extension Length (Lbs. at the Motor End of the First System)	N.A.	235	185	185	185

*For High Moisture Cans Reduce System Length By 50%

NEW

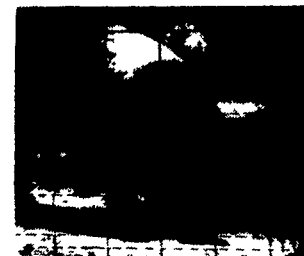


HEAVIEST WIRE FLOORING MADE

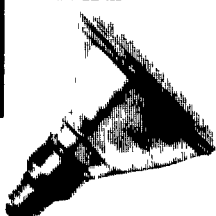


Patented "Double Smooth" design — only from Boss Hog
 5/16" dia. FOR STRENGTH AND DURABILITY
 SMOOTHER BETTER FOOTING SMOOTHER EASIER CLEANING LOOK FOR THE BUMP ON THE BOTTOM

Galvanized Hog, Cattle & Horse Panels



It's Time To Change Your Bulb® PAR HEAT BULB



Features/Benefits
 • 175W
 • 30% Wattage Reduction. Savings Of Over \$37 Per Lamp Over The Life Of The Lamp = Energy Saving
 • Long Life



HEAT LAMPS



A Division of **GSI**

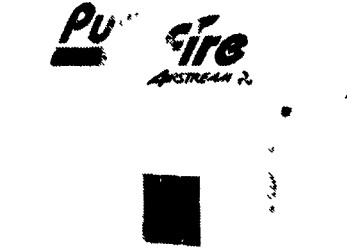
CEILING INLETS



Each unit provides 1.2 square feet of intake area and is designed to operate under negative pressure. Inlets are constructed of fiberglass composite and Styrofoam. Units measure 16.5" square and mount directly into the ceiling and project into the attic. An insulation-stop is provided. Stainless steel counter weights and a manual lock adjustment make it unsurpassed in performance.



THE PURAFIRE
 Our name says it all



Efficient, powerful and versatile agricultural heaters yield greater BTU's for your money.

The PuraFire heater provides a consistent, clean-burning and fuel-efficient source of warmth for all types of poultry and swine houses. With near 100% efficiency (CO emissions of 5 parts per million), the thermostatically operated PuraFire uses less energy to yield greater BTUs for your money. Choose from two PuraFire models: the C80M - variable output (40,000 or 80,000 BTUH) and the C225-225,000 BTUH unit. Each is LP or natural gas compatible and can be mounted inside or outside your confinement house.



WayPig 500 ANIMAL SCALE

The bottom platform has non-skid surface with no gaps on the side through which feet can slip. The entire unit including sides and gates, serve as the weighing area. Waypig 500 & 505 scales can be ordered with wheels that can be quickly raised for level weighing. WayPig 505 - 20"Wx60"Lx14 1/4" H



WayPig LITTER SCALE

All Four Wheels Swivel
 An entire litter can be placed in the portable WayPig at one time, as the scale handles loads up to 200 lbs. The oversize scale quickly gives you clear, precise readout of the total litter weight in both pounds and kilograms. The compact design lets you easily glide through narrow aisles and around tight corners.



The Nitrogen level of the pit waste will be enhanced by 300% with

PIT-BOSS™

Pit Additive To Reduce Odor And Pit Solids



Full Line Of Parts In Stock For Your Poultry And Hog Needs



24 Hour Service

Swine & Poultry Systems Specialists

FARMER BOY AG.

410 E LINCOLN AVE

MYERSTOWN PA 17067

PH. 717-866-7565 800-845-3374

1-14

Hours: M-F 7:00-5:00; Sat. 7:30-11:30

Check Our Warehouse Prices



WE SHIP UPS

Galvanized & PVC



PVC Ball Valve

PLUMBING SUPPLIES

WATER FILTER CARTRIDGES



SEE STEVE, TODD OR JAY FOR YOUR PARTS AND EQUIPMENT NEEDS