



**Phila. Fruit Market**

**PHILADELPHIA Terminal Prices as of 11-JAN-95 FLURRIES 32-35**  
**CITRUS FRUITS ---GRAPEFRUIT:**  
 MARKET ABOUT STEADY 4/5 buctns FL Indian River Red 23s 8.00 27s 8.00-9.00 fr qual 7.00 32s 8.00-9.00 36s 8.00-8.50 40s 8.00 48s 7.00-8.00 56s 7.00 Gulf Coast Red 23s 5.00-6.00 27s 5.00-6.00 32s 6.00 36s 6.50-7.00 White 32s 5.00 ---LEMONS: MARKET STEADY ctns CA 95s fr qual 15.00 115s fr qual 14.50-15.00 mos 15.00 140s 16.00 fr qual 11.00-12.00 mos 12.00 165s 13.00 fr qual 10.00-11.00 mos 11.00 200s fr qual 11.00 ---LIMES: MARKET SLIGHTLY LOWER 10 lb ctns MX Seedless Type 48s 4.00-5.00 mostly 4.00 54s 4.00-5.00 mostly 4.00 63s 4.00-5.00 mostly 4.00 ---MISC CITRUS: 2.5 kg crts SP Clementine 32s 4.50-5.00 ord cond 1.00 20-28s 4.50-5.00

ord cond 1.00 10 kg crts SP Clementine 96s 13.00-14.00 108s 13.00-15.00 mostly 14.00 ord cond 5.00-6.00 120s 13.00-14.00 ord cond 5.00-6.00 168s ord cond 5.00-6.00 ---ORANGES: MARKET STEADY. ctns CA Navel 56s 20.00 72s 15.50-18.00 fr qual 12.00-12.50 88s 14.00-15.00 113s 13.00 4/5 buctns FL Navel 40s 7.50 48s 7.50-8.00 56s 7.50-8.00 64s 7.50-8.00 80s 8.00 fr cond 5.00-6.00 Hamlins 80s 7.00-8.00 100s 6.50-8.00 125s 6.50-7.00 Pineapple 125s 9.00 ---TANGELOS: OFFERINGS INSUFFICIENT TO QUOTE ---TANGERINES: MARKET HONEY TYPE LOWER, OTHERS ABOUT STEADY. 1/2 bu ctns CA Fairchild lge with stem & leaf 12.50 4/5 buctns/crts FL Honey 64s 20.00-21.00 80s 20.00-21.00 100s 18.00-24.00 120s 21.00-22.00 some loas 16.00 150s 14.00-20.00 MX Dancy 80s 17.00 100s 17.00 120s 16.00 150s 15.00 ---TEMPLES: 4/5 buctns FL 64s

6.00-8.00 80s 6.00-8.00 some 9.00 ord cond 3.00 100s fr cond 5.00-6.00 125s 9.00  
**BERRIES ---BLUEBERRIES:** flts 12 6-oz flmwrpd cups CL AIR med-lge 14.00 flts 12 5.6-oz cups CL AIR med-lge 14.00-15.00 flts 12 4.4-oz flmwrpd cups CL AIR lge 10.00-12.00 mostly 12.00 few 14.00 ---CRANBERRIES: ctns 24 12-oz flmbgs MA Late Howe fr cond 10.00-12.00 some 8.00 ---MISC BERRIES: OFFERINGS LIGHT flts 12 6-oz cups with lids CL AIR Blackberries 15.00-16.00 GU AIR Blackberries 15.00 ---RASPBERRIES: OFFERINGS LIGHT flts 12 1/2-pt bkts with lids CL AIR Red fr cond 15.00 GU AIR Red 18.00-20.00 flts 12 5.6-oz cups with lids CL AIR Red 18.00-20.00 flts 12 125gm cups CL AIR Red 16.00 ---STRAWBERRIES: MARKET HIGHER flts 12 1-pt bkts FL med-lge 15.00-16.00 mostly 16.00 one label 20.00  
**MELONS ---CANTALOUPS:** 1/2 ctns/crts GU 12s 18.00-20.00 mostly 18.00-19.00 15s 18.00-20.00 mostly 18.00-19.00 18s 18.00-20.00 HD 12s 24.00 23s 20.00 ---HONEYDEWS: MARKET ABOUT STEADY 2/3 ctns BR 4s 10.00 5s 11.00-11.50 6s 10.00-11.50

mostly 11.00 8s 10.00-11.00 ---MISC MELONS: OFFERINGS INSUFFICIENT TO QUOTE ---WATERMELONS: MARKET LOWER ctns per ctn MX Sangria 3s 18.00-19.00 4s 16.00 Allsweet 3s 17.00-18.00 Red Seedless 4s 17.00 5s 16.00  
**NON-CITRUS FRUITS ---APPLES:**  
 MARKET STEADY ctns trypk CA U.S. ExFcy Granny Smith 88s 18.00-18.50 100s 16.00-16.50 NY U.S. ExFcy Cortland 72s 17.00 Empire 100s 14.00 WA WAEFcy Red Delicious 64s 16.50-17.00 80s one label 17.50 88s 15.00-16.00 preferred labels 17.00-18.00 100s 15.50-17.00 one label 17.50 113s 15.50 Golden Delicious 72s 16.00-17.00 80s 14.50 88s 14.50-15.00 some hias 17.00 100s 14.50-15.00 some hias 17.00 113s 14.50 125s 13.50 Criterion 80s 13.00-14.00 U.S. ExFcy Royal Gala 100s 30.00 WAFcy Red Delicious 64s 11.00 72s 11.00 80s 11.00 88s 11.00 100s 11.00 125s 11.00 138s 11.00 U.S. Fcy Golden Delicious 88s 10.00-10.50 ctns celpk NY Comb U.S. ExFcy-U.S. Fcy McIntosh 100s 18.00 120s 14.50 VT U.S. One McIntosh 120s 7.00-8.00 WA U.S. ExFcy Red Delicious 96s 25.00 ctns 12 3-lb flmbgs NY U.S. Fcy Red Delicious 2 1/4" min

10.00 SPECIAL STORAGE ctns trypk WA WAEFcy Red Delicious 88s 18.00-19.00 100s 18.00 ---APRICOTS: OFFERINGS LIGHT ctns 2 lyr trypk CL BOAT Katy 98s few ord cond 5.00-6.00 ---AVOCADOS: TOO FEW SALES TO QUOTE ---BANANAS: MARKET STEADY 40 lb ctns IMPORT 12.00 fair qual 10.00-10.75 ctns institutional pk IMPORT 12.50 ---CHERRIES: OFFERINGS INSUFFICIENT TO QUOTE ---FRUITS OTHER: ctns 1 lyr CA Apple Pears 20th Century 16s 9.00 Hosui 12s 10.00 ---GRAPES: MARKET LOWER 18 lb lugs bgd CL BOAT Thompson Seedless 16.00-18.00 some 15.00 sml 12.00-13.00 lge 18.00-20.00 some 17.00 Flame Seedless 18.00-20.00 lge 20.00-23.00 some 19.00 Black Seedless 20.00-22.00 mostly 21.00 Red Globe 22.00-23.00 18 lb lugs wrpd CL BOAT Thompson Seedless 15.00 lge 18.00-22.00 some 17.00 sml 13.00-14.00 some 12.00 Flame Seedless 18.00 lge 20.00-22.00 few 19.00 Ribiers 20.00 16 lb lugs bgd CA Thompson Seedless ord cond 4.00-8.00 mos 5.00-6.00 ---KIWIFRUIT: MARKET ABOUT STEADY flts 1 lyr CA 36s 7.00 39s

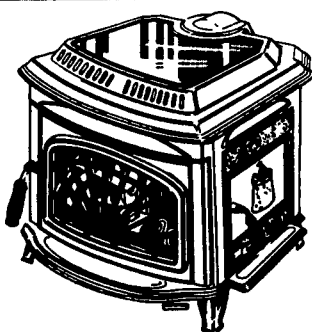
See our beautiful new Wood & Gas Stoves.

at

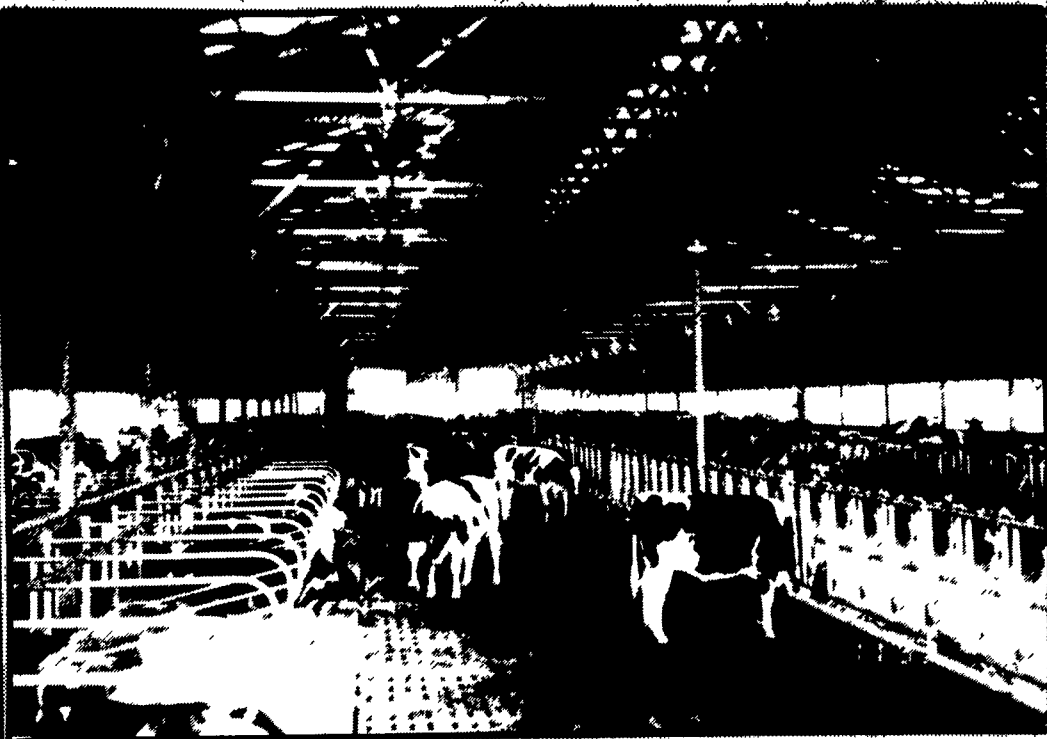
**DUSSINGER'S QUALITY STOVES**

2533 Old Phila. Pike, Rt 340, Smoketown, PA 3 miles east of Lancaster  
 Tue., Thurs., & Fri. 10-8;  
 Wed. & Sat. 10-5

\* See the New "STRATFORD CLASSIC" Coal Stoves  
 (717)397-7539



**KEYSTONE CONCRETE PRODUCTS INC.**  
 477 East Farmersville Rd.  
 New Holland, PA 17557  
 (717) 355-2361  
 "WAFFLE SLAT"  
 Syc Can Corporation

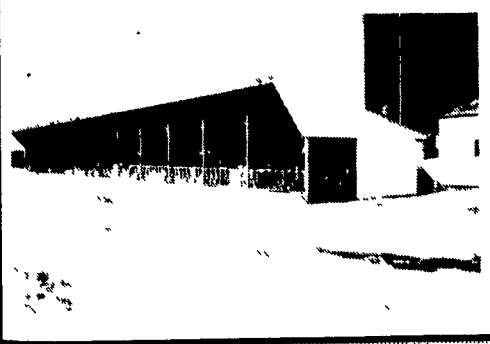


**SLATTED FREE STALL BARN**

**Slatted Hog Barn**



**Slatted Heifer Barn**



**Slatted Beef Barn**



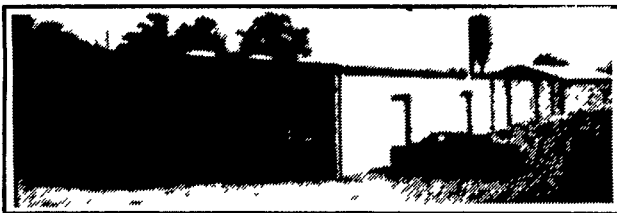
**Bunker Silos**



Precast Concrete Bunker Silos. Available In T-Wall Or A-Frame Panels In 8 Ft. Or 12 Ft. High

**ATTENTION TOBACCO FARMERS**

We Couldn't Do It Without You!



The farmers would have more money in pocket if they make all buyers buy at auctions. The buyer would like it better and do the job cheaper. With county buying and auction, one or the other will lose out. "Which one should go?"

We would like to ask farmers who signed contracts for tobacco, why can't we raise the price? "How can we raise the price when tobacco companies tell us 1/3 of tobacco is sold on contract?" This tells us that 1/3 of farmers are satisfied at \$1.20 per pound.

SALES: January 16<sup>th</sup>, 18<sup>th</sup>, 20<sup>th</sup> • 10 am  
 Receiving: 1/14: 7-12; 1/16: 7-Sale; 1/17: 7-3; 1/18: 7-Sale  
**WE NEED TOBACCO TO WORK FOR YOU**

**TRUCKING AVAILABLE-CALL MITCH**

**KENTUCKY-STYLE BALE BOX with air cylinder**  
**Special \$650<sup>00</sup>**

Pick-up Today Pay with next years tobacco crop

**PARADISE, PA 1/11/95 SALE REPORT**

210,813 Lbs. Sold	Lancaster Leaf.....9%
	Ideal.....27%
	Golden.....15%
	Oldam.....11%
	Southboat.....8%
	Warehouse.....36%
	Victor Winstead.....3%
\$ .85 - \$ 1.30	
Price was Weaker	

Did you know your tobacco looks better at Paradise Sales Barn than in your own barn?

**We Work Hard For The Farmer**

**PARADISE TOBACCO SALES**  
 717-687-0990

Mitch White-Sale Mgr. • Mitch Ashby-Auct.

