

**MAILBOX MARKET FOR SALE**

Top Quality Hay, Straw, Oats, Steer hay 140 per ton and up, mulch hay Call before 7 AM or after 7 PM. 201-735-8389 or 201-735-8865

Case 800 loader in running condition, \$2500, Oliver 62-T baler w/motor works ok, \$750 Ben L Stoltzfus, 5395 James Rd, Mechanicsville, MD 20659

Specializing in pleasure Tennessee walkers Always a good selection of trail & show horses. Yearlings, broodmares Stud Service. Lester Weber Stables 717-336-7311.

Reg Angus bulls and heifers Orange Gate Angus Farm, Maurertown, Va 22644 703-459-3414

Used Bee Equipment Inverbrook Apiaries, RD2, Box 230, West Grove, Pa 19390 215-869-3353

MINI LOP RABBITS with papers, \$25 Very loveable pets NZW Rabbits with papers, \$10 Cecil Co, Md, 301-885-2134

Calf Hutches \$90, David B Stoltzfus, 57 Griest Road, Nottingham, Pa Lanc Co Brown Rd. at Little Braton Second Road Right

Rock Oak, 1" to 1 1/2" Also, Cherry and Poplar After 5 p.m., 717-776-3239

12 yr QH, Bay trail horse 12 yr Il Arab, sharp, endurance, competitive trail horse Have shots, new shoes 717-432-8282

BOOKS in all fields bought, sold, and appraised Exp Pennsylvania/German Call Ron York 717-235-2134

Fickes Silo, 26x70, concrete unloader, completely rebuilt, never used, electric wench 609-235-3810

1972 FWD ford truck runs but not current inspec. No Sunday calls. Lanc. 717-367-2883.

2 new Firestone 11:00x16 8 Ply 4 Rib with tubes +6 235x85R16 +2 205x75R15 50% tread \$300. 15W-40 and hydraulic \$2 00 gallon Warren 908-689-1483.

1984 Chevy Citation good car new battery. Tires. AM/FM cassette stereo low gas mileage 120,000 miles \$850 717-865-6836 Lebanon. 717-865-0622.

1969 Chevrolet C-40, 14' livestock bed, V-8, 4 spd, New. 7 50-20 front tires, motor. Bad, \$1500 obo Carlisle, Cumberland Co. 717-776-3954.

Oliver plow 3-16" 3 pt. \$350. JD plow 2-14" pull type \$100. NH super hayliner 68 baler. \$425. York 717-235-7393.

Complete new Satellite System. 4 Sale dish receiver etc. Call 215-234-8965. Mont. Co.

4 7:00x15LT tires 2 regular 2 mud and snow brand new. \$100 for all 2 P185x75RM studded snow tires. \$50 for both Bucks. 215-679-6332.

Snowblower, mower deck for David Bradley Suburban tractor model #91760614, Differential Assy. for CoPar Panzer tractor Lehigh 610-434-7892

AC D15 tractor, 79 F600 stake body w/lift gate, '59 Ford Rollback, straw, small amount of buckwheat. Eve. Sch. 717-467-2609.

5 wheels and tires 950 16.5 light holes Ford truck \$50 for 5 also BMW radiator 1985 \$50. Cambria 814-487-5139.

Brown model wood cook-stove fair condition/small Fisher Woodstove \$75. Each also some stove pipe. Carroll County Md. 410-795-6497. After 5 p.m.

Registered service age brown swiss bull. Very nice sired by Emory from top cow family. Lebanon Co. 717-865-2846.

Dual 8.25x20 truck tire chains like new condition \$300 wooden cattle racks for 8' pickup bed. \$50. Lanc. Co. 717-872-8572.

Chopper 5 hp hay drying fan. Minn. 717-899-6973.

**MAILBOX MARKET WANTED**

Attic Flooring and Log Houses 717-626-4520.

Old Maryland milk bottles by serious collector. Cash paid or will trade Call collect after 6 p.m. 301-721-0473 Crownsville, Maryland

Will trade duplicate Winross literature for same, also willing to purchase Want to buy Jevic, Tootise Roll trucks, Mike 717-737-4386 Cumb. Co

Propane refrigerators & freezers in good cond, also want 1961 Lincoln Continentals in any cond Ocean Co. N.J. 201-929-4358.

Toys of any kind. Cars, trucks, planes, boats, robots, soldiers, etc., 1960's & older, cash paid York Co 717-292-5573

One 2, 3, 4 & 5 burner new perfection & Ivanhoe kerosene cookstoves Gideon Stoltzfus, Blain, Pa 17006-9714. Perry Co.

Old sparkplugs and model A Ford parts send list and price to David Frazier, 2207 Timothy Drive, Westminster, MD. Carroll Co. 410-635-6723.

16 H Grey Saddlebred male or gelding spirited, driving safe in traffic sound, COB size 4 wheel carriage. Chester Co. 610-495-5595.

Buildings & silos to remove, any condition & misc. steel & aluminum beams, trusses, grates, pipes, or plastic, & other demolition projects. 717-768-3387.

VW diesels 1985 and up running or not. Cumb. Co. 717-776-3305 leave message.

Manual: Vehical or Shop for 1316 Mercedes truck. Berks 610-689-5516.

Minneapolis Moline corn sheller model D for use or parts. Cumberland Co. 717-776-7656.

Old pictorial cigar labels and sample labels top prices write: Cigar Labels, Rd#1, Box 593, Wrightsville, Pa 17368. York 717-252-3591.

Farmall M or Super M Please give condition and asking price. Bucks Co. 215-364-5794.

NH Runing gear any shape or condition semi mount or pull sickle bar mower. Snyder Co. 717-743-6222.

Will remove old barns or pole barns for lumber 20 ft. silo unloader with 7 1/2 HP motor. Berks Co. 610-683-7214.

Wanted for parts Oliver 990, 995, Super 99. Want Cockshutt 40 or 50 for parts. (804) 286-6181 Virginia.

Three ring propane burners for kettle furnace good condition with valves. 717-677-7814. evenings Adams Co.

Mid 1920's air cooled Fox automobile in any condition, Montgomery County 215-635-2659. (7-9 PM)

Two garage doors 7x9 Franklin County 717-532-9023.

Bolens hubcaps for garden tractor. Must say Bolens on them also 2-stage snow plower HT-20. Warren Co. 908-454-0867.

John Deere 110 1963 lawn tractor and mower 7 1/4 HP Kohler engine. York Co. 717-292-1307

Want wide old pickup frames, plaster covered (damaged O.K.) or wood also needlework samplers Kikinnane, Box 212, Shartlesville, Pa. 19554 Berks Co. (610) 488-7792.

Allis-Chalmers parts tractors D-14, D-17, D-19, WC, WD, B, C, Oliver 60, 70, Row crop or standards parts, accessories. Lanc. Co. 717-684-5352.

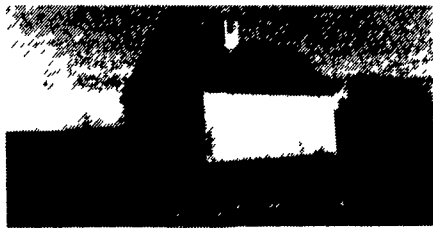
Weaverline feed cart for sale 55 cuft stationary TMR excellent condition \$1700.00 OBO Bedford 814-766-2544.

**JAY ZEIGLER Standing Seam Metal Roofing**

Since 1963 "Simply The Very Best Roof Available"

FREE Estimates

Call For Information



Use on Barns Or Garages



Good For All Roof Angles



Beautifies All Homes Old & New



Before Applied Over Existing Roof



**ADVANTAGES:**

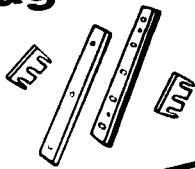
- Roof can last for 100 years - cost efficient
- Can be installed over existing roof (Asphalt, roll roofing, wood shingles)
- Is environmentally safe
- Beauty - colorful (galvanized, 40 lb. terne, terne-coated stainless, and painted steel in over 20 different colors.)
- Can be installed on flat roof with as little as 1/4" pitch per foot.
- Good for homes, farm buildings, garages, commercial buildings.
- Sheet in continuous length installed with concealed fasteners with double lock seam for water tight application.

PO Box 231 Rehersburg, PA 19550  
(717) 933-4666 (717) FAX 933-5305

**SAVE \$**

Quality Products Farm Show Main Floor (East End) Free Catalog

**Forage Knives**

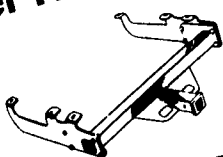


**Barn Fans**



Combine Parts corn head knives, straw chopper knives, cylinder & rasp bars, Deere cornhead rollers —while supplies last—

**Trailer Hitches/Access**



**Weaver Distributing**

1-800-Weaver-D  
1-800-932-8373

Fax 1-800 Fax to WD 1-800-329-8693

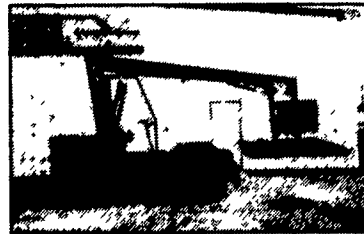
RD 2 Fredericksburg, PA 17026

**STEFFEN SYSTEMS INC.**

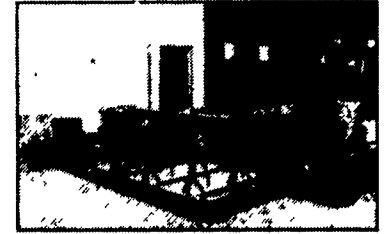
**HAY HANDLING EQUIPMENT**



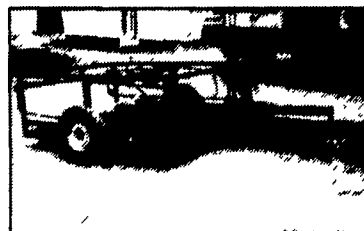
55- The "Model 55" bale rack is the foundation on which Steffen Systems Incorporated has built its reputation of quality. This model is available in many frame-size options, as well as with attachments to fit bucket loaders, forklifts and skidsteer loaders, to accommodate nearly any bale size or mounting application



200- The "Model 200" self-propelled yard loader is a unique machine designed to move many bale sizes and package configurations at high speed. Its stacking height of 20 feet and short wheelbase allow the "Model 200" to maneuver in and out of tight areas while making optimum use of the existing storage space



65- The "Model 65" bale rack is specifically designed to match the needs of New Holland bale wagon users, such as models 1003, 1037 & 1069. With six hook bars, this unit easily handles any three-bale-wide package. This model is also available with several frame-size options and mounts to suit your special needs



950- The Bale "Accumulators" are designed to conveniently and easily arrange up to ten 2-tie or eight 3-tie bales into a uniform package. The fully automatic electric over hydraulic controls operate the accumulator without the need of an operator. With its quick and smooth functions the bale accumulator can accept up to five bales per minute

**Call For Field Demonstration!**

FOR MORE INFORMATION CALL OR WRITE:

**DAVID O. FINK**  
6958 Phillips Road  
Germansville, PA 18053  
215-767-1408  
Fax 215-767-1312

- Harvest Tech Equip.
- Twine
- Drying Agents
- Plastic Bale Wrap
- Preservatives

**Steffen Systems, Inc.**  
8045 State Street, Salem, OR 97301  
(503) 399-9941  
Fax (503) 371-4779



51-32- The "Model 51-32" bale rack is a perfect match for most compressed bale loading or unloading operations. With a frame size of 86" x 86" and powered vertical tilt. The unit adapts nicely to 6000 to 7000 lb lift trucks. Comes standard with 32 teeth, 2 hook cylinders. The "Model 51-32" is excellent for half cut bales