

**Frederick Livestock Auction**

Frederick, Md.  
January 2, 1995  
Report Supplied by Auction  
SLAUGHTER COWS: 80 HEAD, 1.00 LOWER UTILITY 39.00-43.00; HIGH DRESSING 43.50-45.25, 1 AT 46.75; CANNERS 35.00-39.00; SHELLY 34.00 DOWN.  
BULLS: FEW OFFERED. YG#1 1540 LBS. AT 54.25; YG#2 1210 LBS. AT 45.50.

FED STEERS: MAINLY HOLSTEIN OFFERED; LOW CHOICE HOLSTEINS 1590 LBS. AT 55.00; SELECT 1600-1725 LBS. TO 53.00; STANDARD 48.00-50.00.  
HEIFERS: DAIRY CULLS 42.00-44.75.  
VEAL CALVES: 233 HEAD. HIGH CHOICE AND PRIME 200-250 LBS. 90.00-100.00; GOOD TO LOW CHOICE 75.00-85.00; CULLS 85-110 LBS. 35.00-42.00; 50-80 LBS. 30.00-40.00; WEAK/ROUGH 30.00 DOWN.  
FARM CALVES: HOLSTEIN BULLS 15.00-20.00 LOWER. #1 90-120 LBS. 100.00-117.00; 80-85 LBS. 50.00-85.00;

HOLSTEIN HEIFERS #1 90-120 LBS. 170.00-195.00; 75-85 LBS. 85.00-115.00; BEEF X BULLS TO 107.00; HEIFERS TO 85.00.  
BUTCHER HOGS: 85 HEAD, 1.00 LOWER. 215-260 LBS. 32.00-33.50; FEW SMALL LOTS TO 35.75; 270-295 LBS. 29.00-31.00; #2&3 26.00-27.25; 1 LOT 241 LBS. AT 31.60.  
STOCK CATTLE: STEERS, FEW OFFERED. NO LIGHT WEIGHTS. FEW 800-900 LBS. TO 52.00.  
HEIFERS: 500-800 LBS. 50.00-56.50; 2 HOLSTEINS 800 LBS. AT 70.00.  
BULLS: 400 LBS. TO 61.50; 700-850 LBS. 47.00-56.50.  
LAMBS: 1 125 LB. AT 56.00; MEDIUM 25-70 LBS. 55.00-75.00.  
SHEEP: 28.00-41.00.  
GOATS: LARGE 61.00-75.00; MEDIUM TO 52.00.  
PIGS AND SHOATS: BY THE HEAD FROM TESTED HERDS, 35-45 LBS. 9.00-15.00; 3 HEAD 71 LBS. NOT TESTED AT 15.00.  
SOWS: NONE OFFERED.

BOARS: 230-250 LBS. TO 21.50; 1 630 LB. AT 14.50.  
HATFIELD QUALITY MEATS 33.75 PLUS BONUS ON QUALITY HOGS. BUYING STATION HELD EVERY TUES. AT FOUR STATES.

1-2 220/250 lbs 33.50-36.00, US 1-3 210/275 lbs. 30.00-33.25, few US 1-3 280/310 lbs. 25.00-30.00. SOWS: US 1-3 400/650 lbs. 21.00-28.00, US 2-3 300/550 lbs. 16.00-20.00. BOARS: 200/670 lbs. 14.00-19.50.  
FEEDER PIGS 292...Few US 1-3 20 lbs. 10.00, few lots 55/75 lbs. 20.00-31.00. --- per head.  
SHEEP 26...Wooled lambs: few Choice 65/70 lbs. 95.00-100.00, few 42 lbs. 155.00-157.00.  
GOATS 10...Few Medium 30.00-42.00, few Small Kids 20.00-28.00. --- per head.

**Keister's Middleburg Auction**  
MIDDLEBURG, PA  
January 3, 1995

CATTLE 493... PDA ...Compared to last Tuesday's markets...Choice sl. steers .50 to 1.50 higher, Holsteins about steady, Holstein about steady, cows .50 to 1.75 lower. STEERS: few High Choice and Prime 1300/1400 lbs. 70.00-72.50, Choice 1025/1475 lbs. 66.50-71.00, couple 72.00, Select 61.00-65.00. HOLSTEINS: Choice 1200/1600 lbs. 60.00-64.00, Select 55.00-60.00, few Standard 45.25-52.00. HEIFERS: Choice 980/1240 lbs. 64.00-69.75, few Select 55.00-64.00, few Choice Holsteins 56.00-63.00. COWS: Breaking Utility and Commercial 40.00-43.75, couple 45.75, Cutter and Boning Utility 40.00-44.75, Canner and Low Cutter 34.50-39.75. Shells down to 32.00. BULLS: Yield Grade No. 1 1080/2300 lbs. 45.00-51.50, No. 2 1060/2400 lbs. 41.50-46.00. FEEDER CATTLE: Steers: few Medium & Large Frame No. 1 450/600 lbs. 71.00-75.00; Heifers: Medium Frame No. 1 400/650 lbs. 51.00-61.00; Bulls: Medium Frame No. 1 400/750 lbs. 56.00-68.00.  
CALVES 176...VEALERS: one Choice 79.00, couple Good 67.50 & 74.00, Standard and Good 75/95 lbs. 40.00-50.00, Utility 55/95 lbs. 30.00-40.00. FARM CALVES: No. 1 Holstein bulls 85/125 lbs. 70.00-122.50, No. 2 80/120 lbs. 50.00-65.00; No. 1 Holstein heifers 80/115 lbs. 150.00-257.50, No. 2 70/200 lbs. 60.00-110.00. Beef cross bulls and heifers 75/100 lbs. 80.00-110.00.  
HOGS 481...(01/02 & 03/95)...Bulk of supply sold on Monday and reported by the auction. BARROWS AND GILTS: US 1 230/250 lbs. 36.50-38.00, few 38.50, US

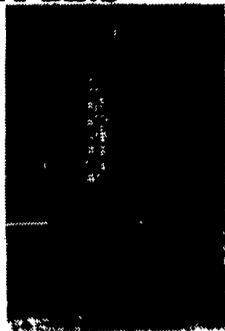
**Grantsville Livestock**

Grantsville, Maryland  
Report Supplied by Auction  
Sat., December 31, 1994  
STOCK BULLS AND STEERS 200-500 LBS. 55.00-70.00.  
STOCK HEIFERS: 50.00-65.00.  
SLAUGHTER STEERS GOOD TO CHOICE 58.00-64.50; MEDIUM TO GOOD 52.00-54.50.  
HOLSTEIN STEERS GOOD 45.00-59.75; LIGHT 44.50-52.00.  
SLAUGHTER HEIFERS GOOD TO CHOICE 55.00-62.50; MEDIUM TO GOOD 40.00-54.00.  
BULLS HEAVY 45.00-60.10, LIGHT 40.00-52.00.  
COWS FEW HIGH DRESSING UP TO 45.00, UTILITY HOLSTEIN 37.00-42.00, CANNERS 32.00-36.00, CULLS 30.00 AND DOWN.  
VEALS GOOD TO CHOICE 70.00-85.00, MEDIUM TO GOOD 55.00-68.00.  
BOB CALVES: 30.00 AND DOWN.  
HOLSTEIN BULL CALVES RETURN TO FARM 90-120 LBS. 60.00-125.00.  
HOLSTEIN HEIFER CALVES RETURN TO FARM 100-120 LBS., UP TO 130.00.  
BEEF CROSS CALVES RETURN TO FARM UP TO 85.00.  
HOGS: TOP QUALITY 32.00-38.00; HEAVY 32.00-37.00, LIGHT 25.00-35.00, FEEDER PIGS BY THE HEAD 5.00-30.00.  
SOWS: 10.00-30.00.  
MALE HOGS: 12.00-20.00.  
LAMBS: 65.00-70.00; CULLS 60.00 AND DOWN.  
SHEEP: UP TO 34.00.



**QUALITY BINS**

We assemble, deliver & set-up bins on your farm



Models Available: Your Choice Of 8, 7, 9, 12 and 15 Ft. All Galvanized Hopper-Bottom Bins

Check Our Warehouse Prices 24-Hour Service

We Ship UPS

**FARMER BOY AG.**

410 E. LINCOLN AVE., MYERSTOWN, PA 17067  
Hours: Mon.-Fri. 7:00 to 5:00; Saturday 7:30 to 11:30  
PH 717-866-7565

**CHICKEN HOUSES FOR SALE**

- 2 Snavelly Built Houses, 250'X48' and 40'
- 3 Year Old Ziggety Nipple Drinkers
- Fans, Heaters, Etc.
- Located in Lanc. Co.

**(717)560-1829**

**Visit us at the PA FARM SHOW**

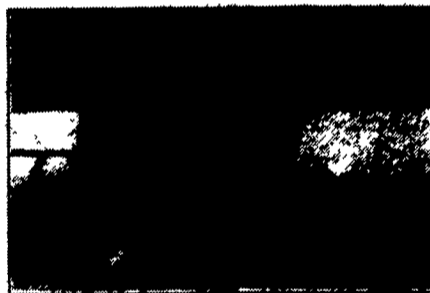
Main Floor Booths #275-276 & Outside Lot #31 & 32

**PRONOVOST AUTO LOAD ROUND BALE HANDLER P-6800**



Designed to answer today's need and built to last.  
"Only The Best Will Stand The Test Of Time"

**PRONOVOST SILATUBE**



P-6200 Self-operating silage bale tubing-machine SilaTube with 48" to 58" hydraulically adjustable drum. B/S 9 HP gas engine, complete with pump and control valves. Front wheels (2) 8.5x8 and rear wheels (2) 5.9x15. Integrated oil reservoir. N.B. Requires no preparation.

**Silo-Matic**



- Unloader & Feeder Equipment
- TMR Mixer



717-776-3129

**THE Scoular COMPANY**

GRAIN DIVISION

**BUYING AND SELLING SOFT RED AND WHITE WHEAT**

Picked Up and Delivered Bids Available  
Prices Quoted for Spot or Future Delivery  
Prompt Payment

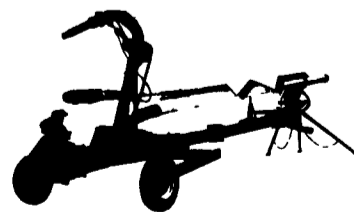
**ASK FOR BILL KRUEGER (800) 487-1474**

**WE WANT TO BUY YOUR WHEAT**

**WIC Stirrs Things Up! P-300 Liquid Manure Pump**

The Most Powerful On The Market!

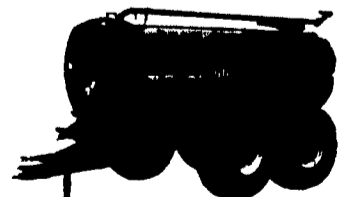
Stirs Pits And Lagoons IN A FLASH



Powerful Auger That Brings Even The Biggest Solids Thru The Shredding Impeller

Various lengths available on a 2-wheel or 4-wheel frame and 3-point hitch on a tractor

**WIC The Leader In The Field WIC Liquid Manure Spreader**



15 Years of Experience In Manure Management

- Even spreading and great stability!
- From 1950 to 6000 gallons!
- Quick-lock impeller door!
- Standard frame or 2 steering wheels on the back.

**ENDLESS MOUNTAINS EQUIPMENT**

**PRONOVOST**

- Dumping trailer 1 1/2 ton, 5 ton, 8 ton, 12 ton
- Forage Box - 12 ton
- Autoload round bale handler
- Round bale rack
- Wagon 10 ton 4 wheels, 12 ton 6 wheels, 12 ton 4 wheels
- Hay rack for round bales mounted on 12 ton dump trailer (optional)
- Rotary cutter
- Rolling harrows
- Concrete mixer

**WIC**

- Liquid manure spreader
- Bedding chopper
- Strawberry mulcher
- Chopper blower "Blizzard"
- Motorized Silage feeder
- Motorized grain feeder
- Motorized round bale feeder
- Motorized baled hay wagon

- Manual silage feeder
- Manual baled hay wagon
- Manual grain feeder
- Sani-Cart
- Control feed wagon
- Roller mill
- Hammer mill
- Electronic Control for roller mill
- Electronic Control for hammer mill
- Computerized system WIC-100
- Grain augers
- Conveyor
- Hay dryer
- Barn ventilator
- Barn broom
- Electronic swing gate
- Motors - gas
- Motors - electric

**OTHER**

- 
- 
- 

For Further Information, Contact Your Nearest Dealer Or  
**ENDLESS MOUNTAINS EQUIPMENT CO.**

Rt. 56 (P.O. Box 185), Fishertown, PA 15339  
(814) 839-2177 800-227-3486 Fax (814) 839-9111

Check  Product(s) Interested In  
Name \_\_\_\_\_  
Address \_\_\_\_\_  
Phone \_\_\_\_\_