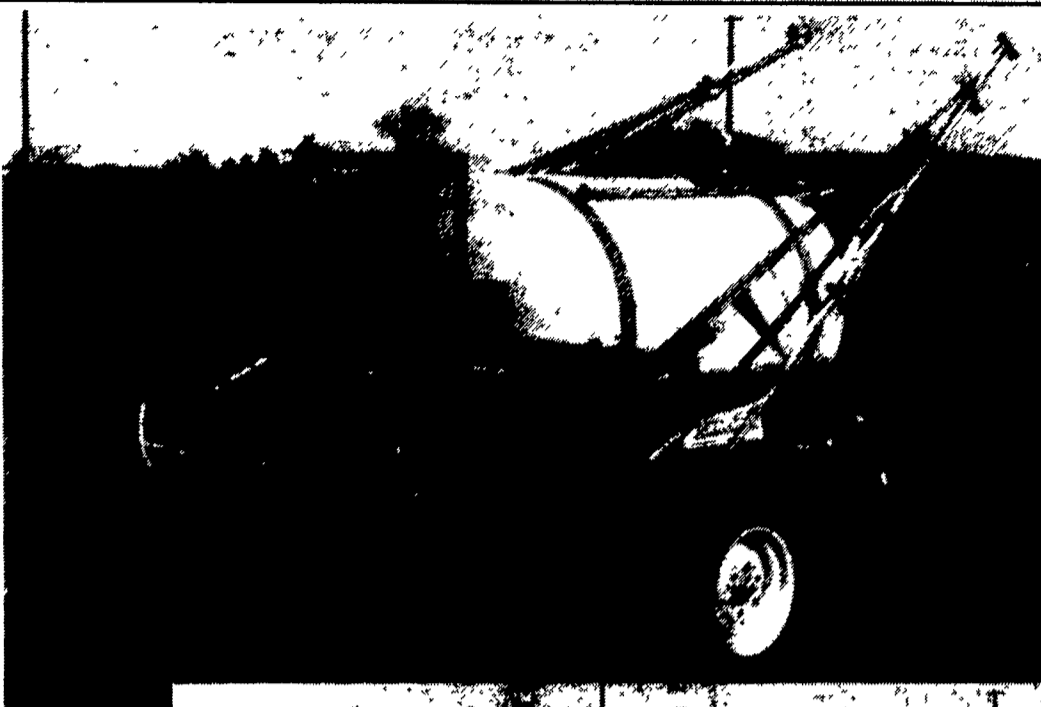


**PAUL B. Zimmerman INC.**

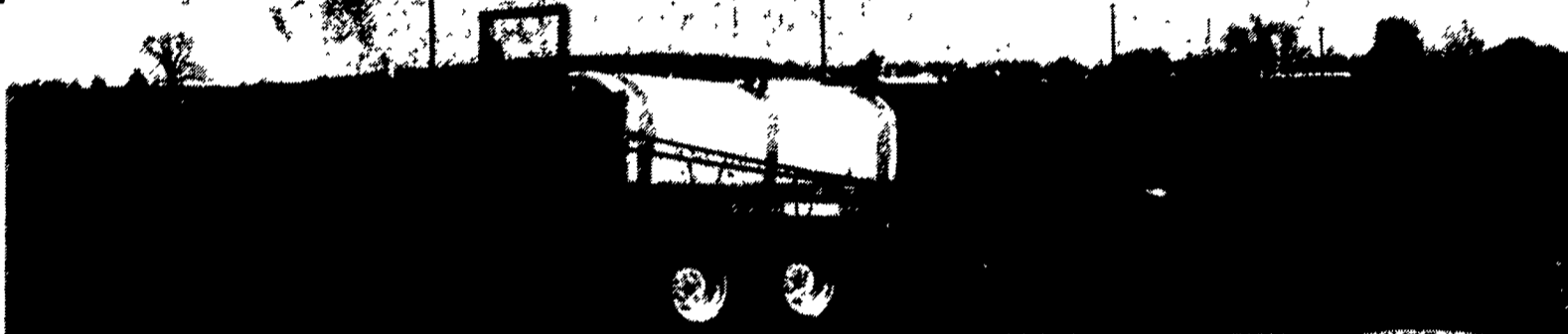
**SPRAYING EQUIPMENT**



**200, 300 and 500 GALLON TRAILER SPRAYERS**

**STANDARD FEATURES ON TRAILER-TYPE SPRAYER**

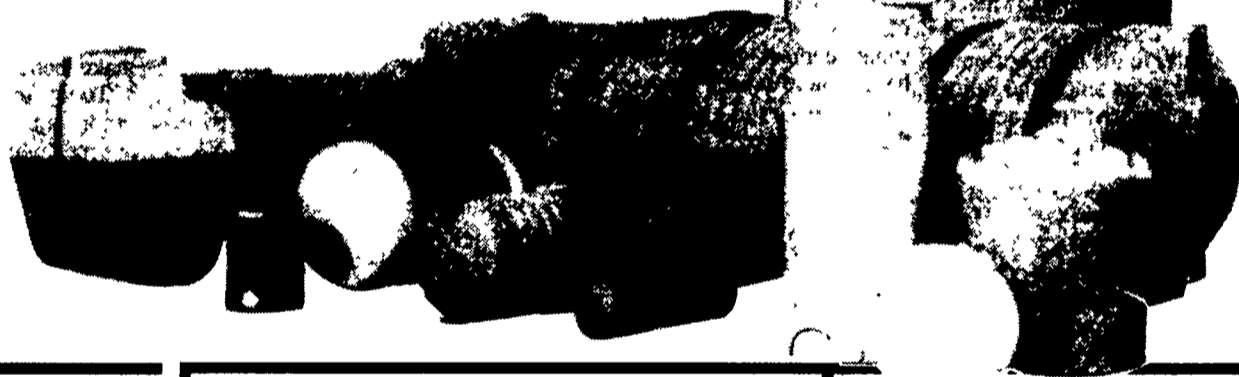
- All Welded Steel Main Frame
- Poly Tank
- Hitch Jack
- Adj. Boom Height
- High Crop Clearance Low Overall Height
- Adjustable Width Wheel Spacing
- Selector Valve



**RAVEN**

**POLY TANKS**

25 To 2500 Gal. Vertical and Horizontal

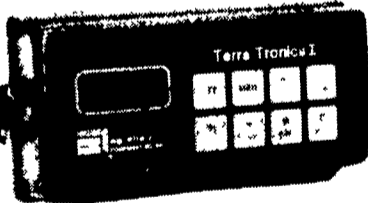


We Stock a Complete Line of



**Spraying Systems Co.**

**TERRA-TRONICS I**  
Electronic Monitor Measures Working Acres And Ground Speed



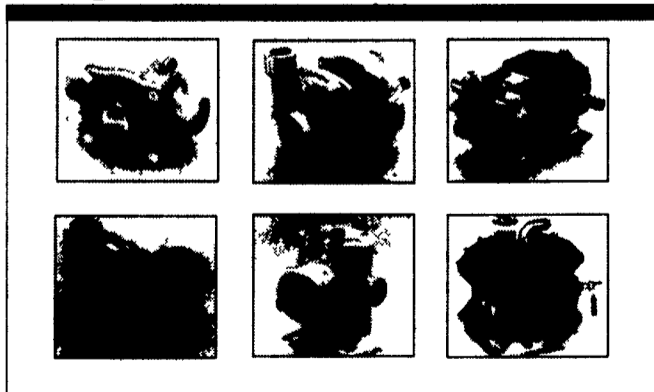
- Easy-to-see digital readout
- Easy-to-operate touch sensitive keys
- Operates with any field implement requiring acre measurement - pulled, mounted, or self-propelled sprayers, combines, etc

**SHURflo**

**DIAPHRAGM DEMAND PUMP**



**Hypro PUMPS**



**The Long Blue Line** For roller pumps, centrifugal pumps, diaphragm pumps, piston pumps and plunger pumps, no one offers you more quality choices than Hypro. More types. More models. And most of all, more quality and dependability. For virtually any spraying, fluid handling or pressure cleaning need you have, depend on *The Long Blue Line*™ for genuine value. Genuine Hypro pumps from your quality Hypro dealer.

**Pacer Self-Priming Centrifugal Pumps For Agriculture**

**'S' Series 3 HP**

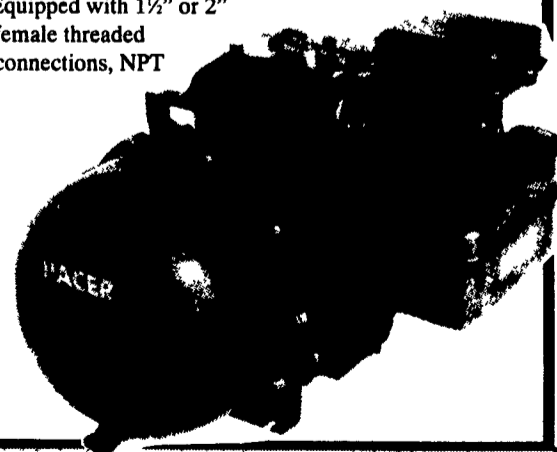
**Features:**

- Self-priming to 20 feet (6.1 meters)
- Total heads to 120 feet (24.4 meters)
- Capacities to 200 U.S. GPM (628 liters per minute)

**'S' Series 5 HP**

- Built in check valve
- Equipped with 1½" or 2" female threaded connections, NPT

**HOURS:**  
Mon., Thurs., Fri. 7-8:30  
Tues., Wed. 7-5:30  
Sat. 7-4:00



**PAUL B. ZIMMERMAN, INC.**

Manufacturers - Distributors

50 Woodcorner Rd., Lititz, PA 17543 (717) 738-7350