

# SRBC To Meet, Adopt Policy

(Continued from Page A18)

any reason unless environmental and economic evaluations are conducted and reviewed in order to ensure that risks associated with the first-time introduction are acceptably low.

The signatories to the Adoption Statement (the governors of Virginia, Maryland, Pennsylvania, the head of the EPA, the District of Columbia, and the Chesapeake Bay Commission) are committed to sharing information and to carefully assessing through a joint review process all proposed first-time introductions of non-

indigenous aquatic species in the Chesapeake Bay basin.

The signatories ... are also committed to working together to prevent unintentional introductions of non-indigenous aquatic species and to minimize the negative effects of undesired aquatic species within the Chesapeake Bay ecosystem.

Under the definitions of the policy, "Hatchery-produced hybrids and genetically engineered organisms are also defined as non-indigenous species, even if the

parent species or source organisms are indigenous or naturalized."

The term naturalized means that an introduced species, such as brown trout, that has survived to create a self-sustaining population for at least 10 years.

It is the history of agriculture and of those who spread a knowledge of agriculture, that the intro-

duction of non-indigenous (not there before man introduced) or non-native (existing and socially acceptable, but introduced by man) species of plants, fish, fowl and mammals into an area has been done in order to provide an alternative or already known source of food and fiber than what is available naturally.

However, with current practices well established, and a high risk of accidentally introducing a new disease or species that could destroy those currently important, efforts have been underway to curtail the practice of introducing species before understanding the potential of economic and environmental damage they may pose.

**CLASSIFIED ADS  
PAY OFF!**

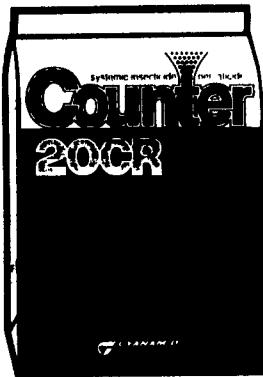
**B-GRADE  
WOOD PELLETS  
FUEL**  
**\$135<sup>00</sup> TON**  
**1-800-373-9704**

## ROOTWORMS BEWARE!

systemic insecticide nematocide  
**Counter**

**JUST GOT  
TOUGHER.**

**NOW LABELED FOR USE WITH ACCENT® HERBICIDE**



COUNTER® 20CR® systemic insecticide-nematocide gives corn growers all the most desirable insecticide features in one outstanding product.

UNIQUE PELLET COUNTER 20CR has the active ingredient evenly distributed throughout each pellet. The pellets break down gradually, providing controlled release for longer term effectiveness.

OUTSTANDING PERFORMANCE. No other corn insecticide can match the performance and broad-spectrum control of COUNTER. Corn treated with COUNTER has bigger, stronger roots, for healthier plants and higher yields.

MORE HERBICIDE OPTIONS. Applied banded, COUNTER 20CR is labeled for use with ACCENT<sup>1</sup> and virtually any other herbicide. So you don't have to sacrifice rootworm control for weed control.

LOWEST DUST. COUNTER 20CR is formulated with soybean oil, and the pellets don't crumble during handling and shipping. So there's virtually NO dust. For information about COUNTER 20CR see us.

ALSO  
AVAILABLE  
IN  
LOCK'N  
LOAD



**FREE  
JACKET**

WITH THE PURCHASE OF  
600 LBS. OF COUNTER.  
(ANY FORMULATION OR PACKAGE)

Name \_\_\_\_\_  
Address \_\_\_\_\_  
Town \_\_\_\_\_ State \_\_\_\_\_  
Zip \_\_\_\_\_ Phone \_\_\_\_\_

- Offer Good Only To PA Residents
- Limited One Per Farmer or Farm Operation
- Mail This Coupon With Proof Of Purchase (Dated Dealer Invoice)

To: American Cyanamid Co.  
Michael Fleming  
536 Wood View Drive  
Litz, PA 17543

OFFER EXPIRES APRIL 1, 1995  
MUST SUBMIT BY MAY 31, 1995

See the AgriCenter 

Dealer Nearest You  
or for more Information  
call your Cyanamid Rep.

Eastern Pennsylvania Area:  
Mike Fleming  
717-627-0661

Western Pennsylvania Area:  
Jim O'Bryan  
814-667-3648

**Harvest  
PARTNERS**

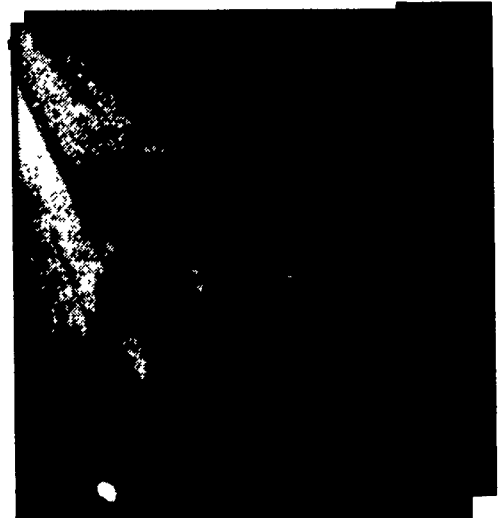
Restricted Use Pesticide. Always follow label directions. ©/™ Trademarks, American Cyanamid Company © 1994. Trademark, DuPont Company

Preferred Customer Program

**KNIGHT**  
Manufacturing Corp.

**3000 Series Reel Auggie®  
Mixer with optional  
Hay-Max Kit**

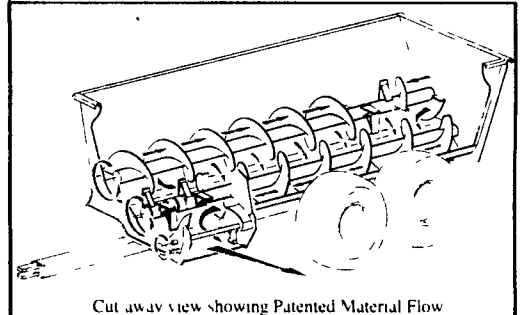
Designed to blend long stem dry hay in a TMR ration. Available in tow, truck & stationary models. Rugged, efficient, reduces dead spots & compaction.



MIXER/BLENDER/FEEDER

**NEW  
FROM**

**KNIGHT**  
Manufacturing Corp.



**8000 SERIES Pro Twin SLINGERS**  
REVOLUTIONIZES THE V SPREADER CONCEPT.  
SIZES - 400 BU. - 500 BU. - 600 BU.  
1800 GAL. - 2400 GAL. - 3080 GAL.

## SCHULER FEEDER



A HIGH QUALITY, TOP PERFORMING  
FEED WAGON  
FOR HAYLAGE, SILAGE AND  
GRAIN RATIONS.  
MIXES WHILE UNLOADING  
5 SIZES - 120 - 300 BU.

See These Products  
On Display At The  
PA Farm Show

**TODD FARM  
EQUIPMENT, Inc.**

(Equipment Distributors)  
FOR OVER 75 YEARS  
FARM EQUIPMENT  
DIVISION  
HAGERSTOWN, MD  
(301) 791-0422